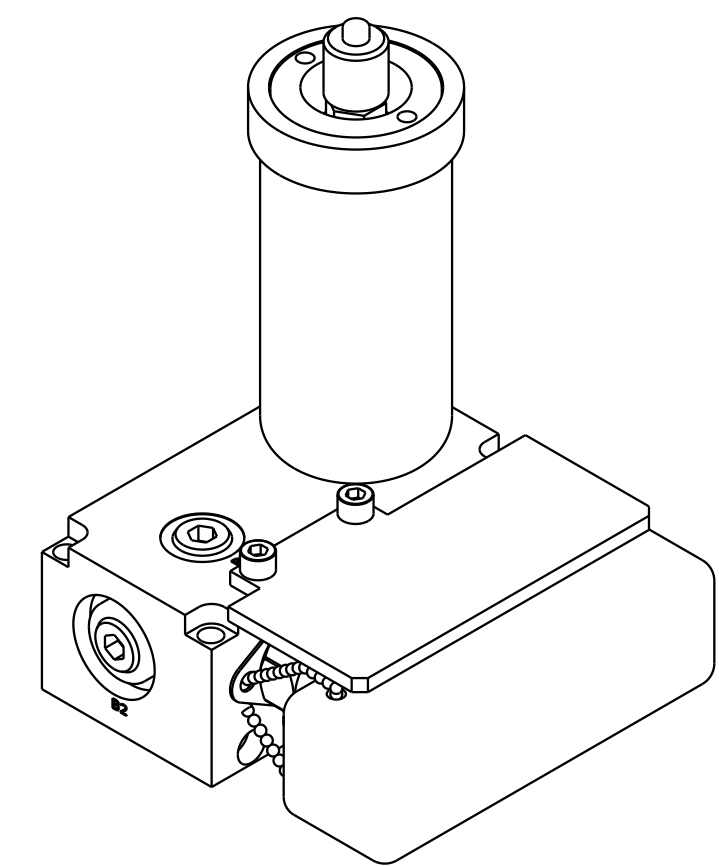
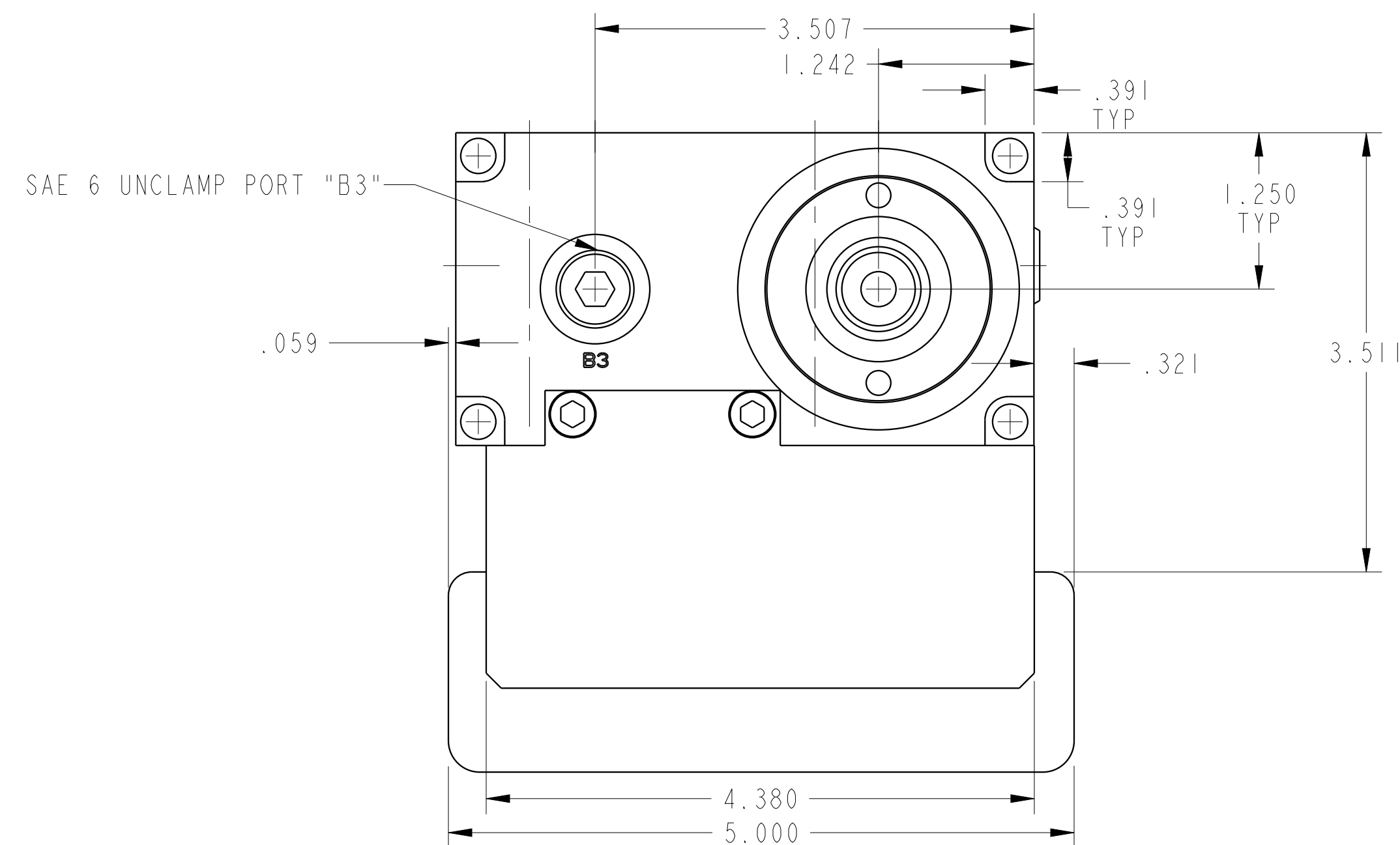


1

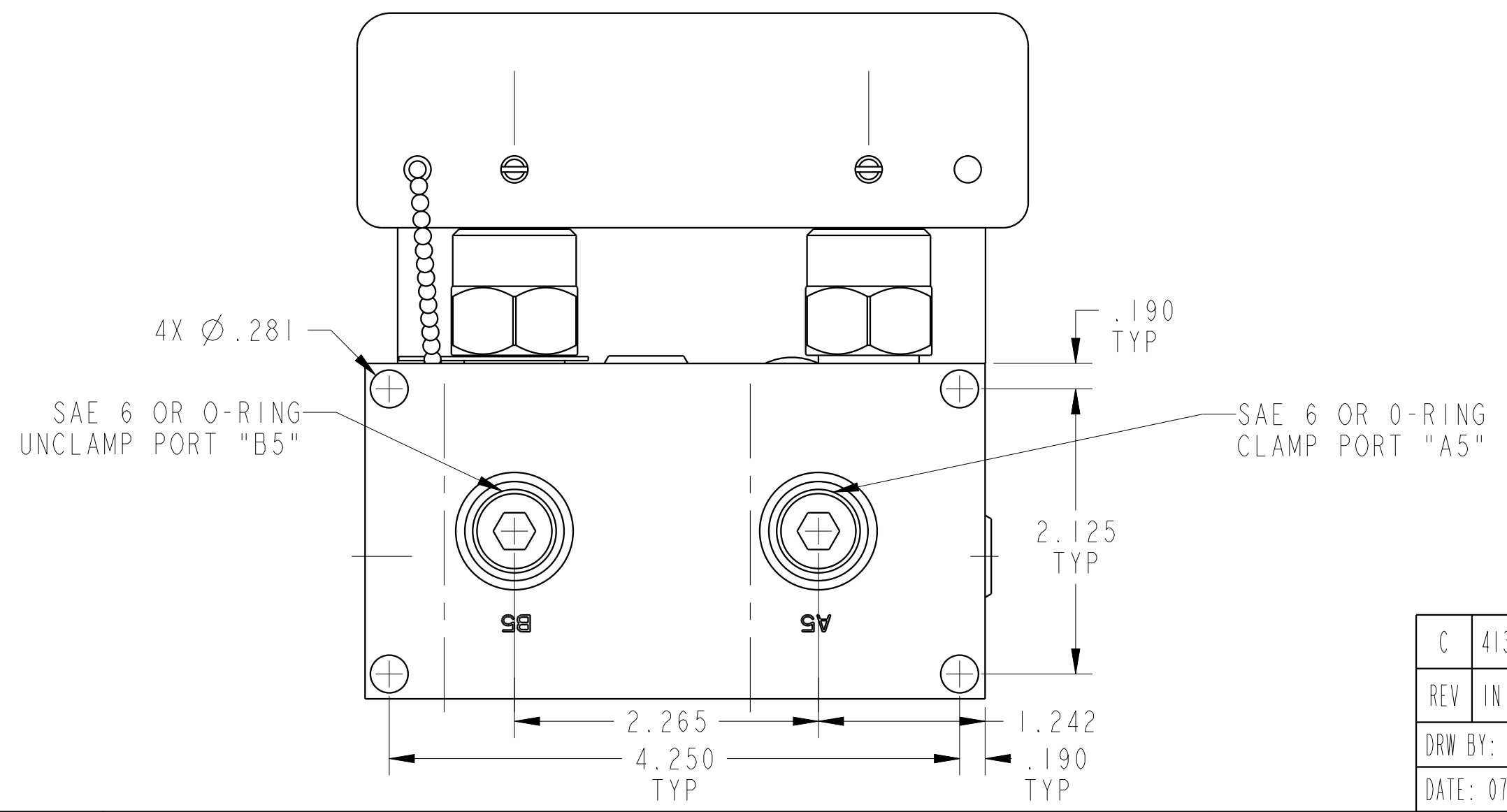
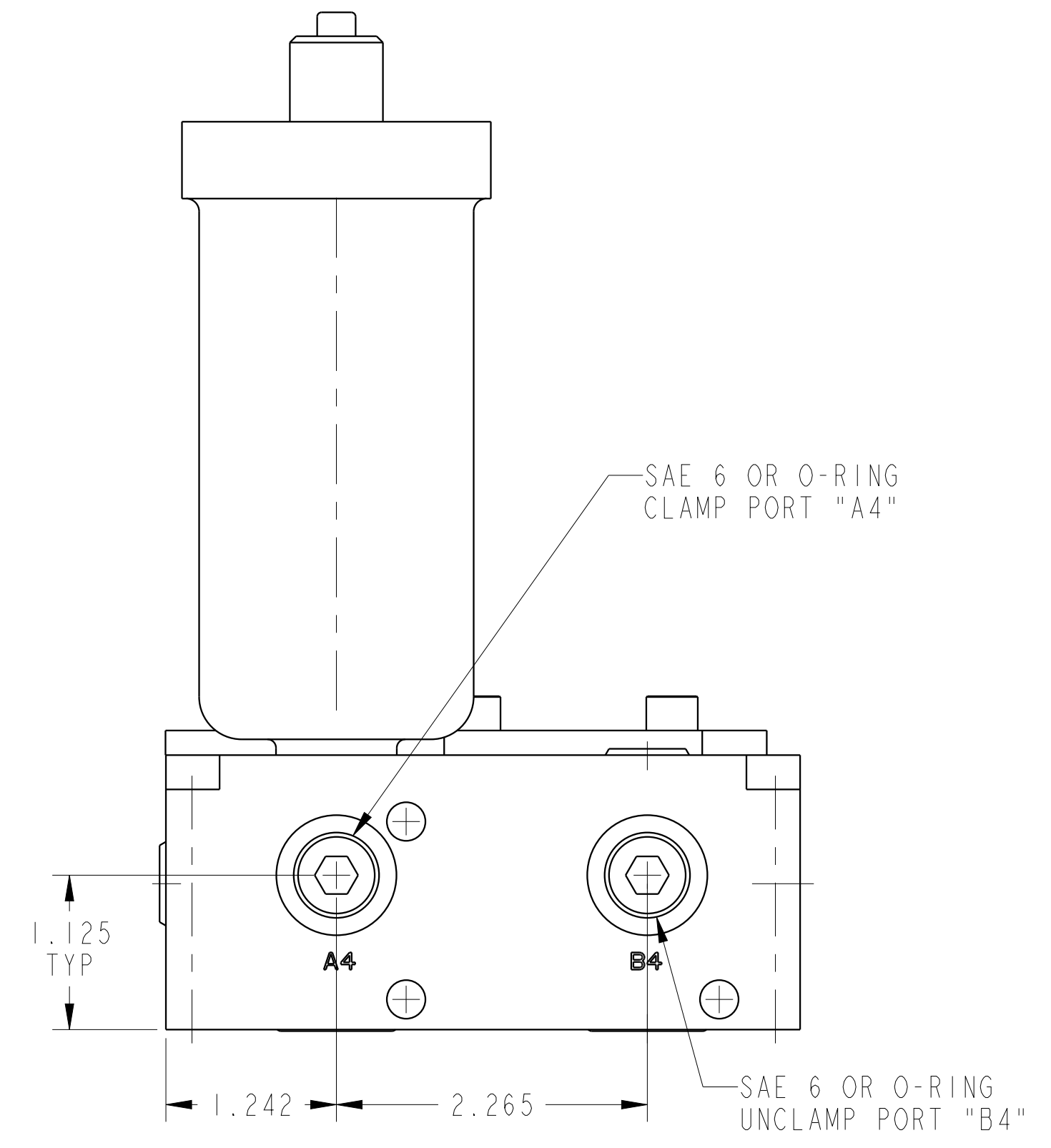
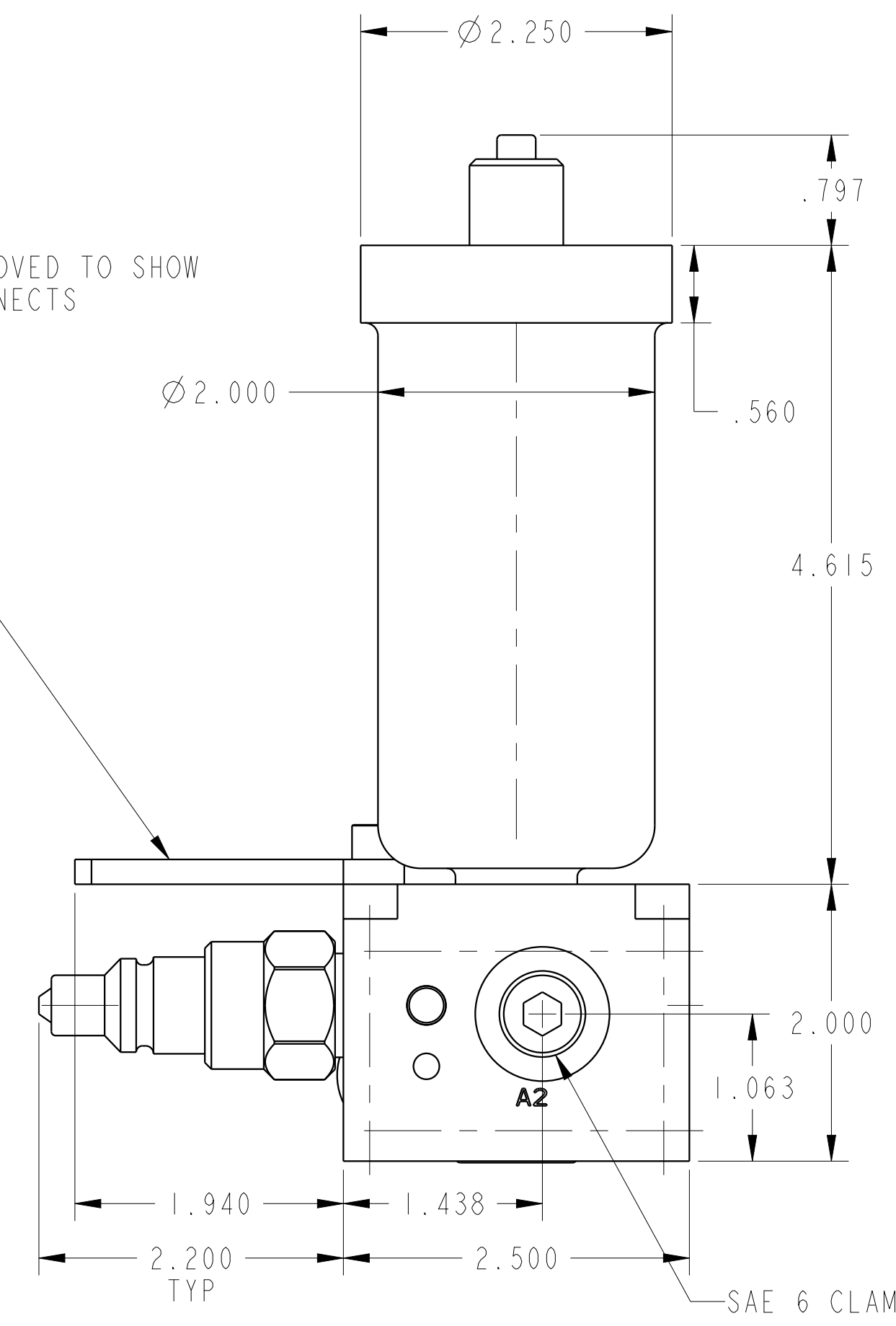
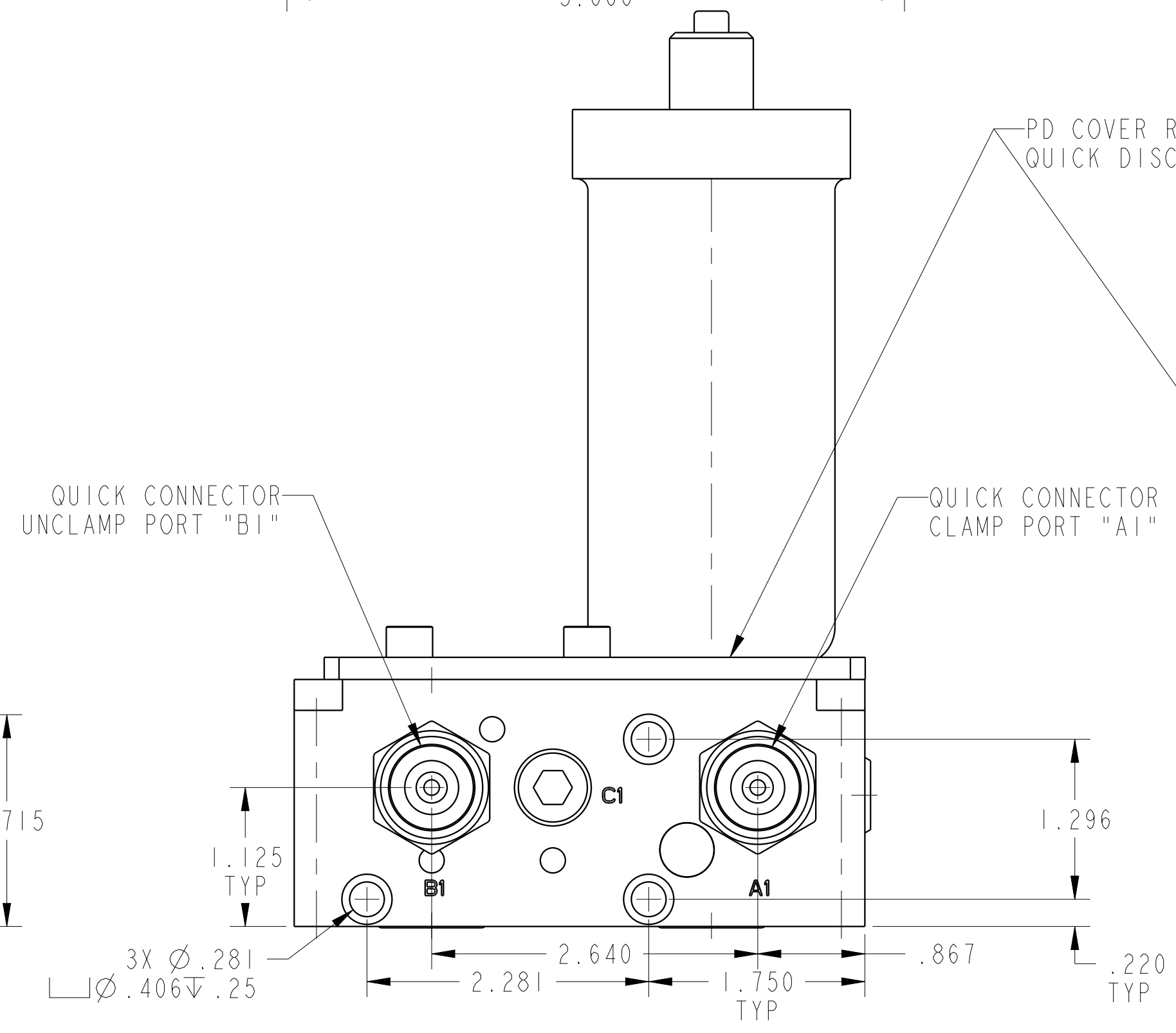
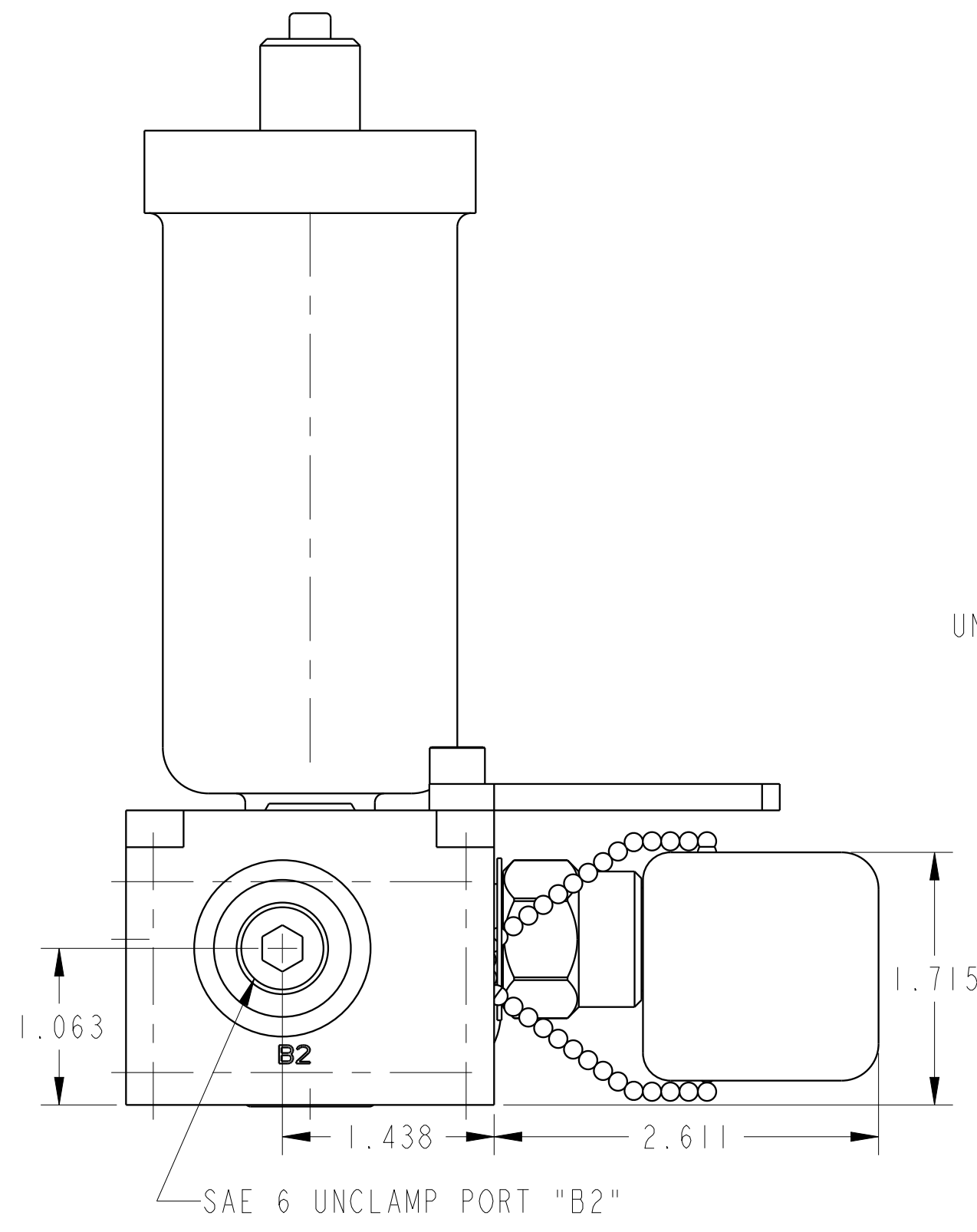
2

3

4



SCALE 0.500  
 ILC56000520 REV C ECN4131



**CAD CONTROL DRAWING**

VEKTEK, INC.  
 1334 E. SIXTH AVE. P.O. BOX 625  
 EMPORIA, KS. 66801 U.S.A.

C	4131	RELEASE	NPETERS	3/17/20	56000520	E	PD, 2H, DUAL, 5000, EXT ACC
REV	IN ACCORDANCE WITH ECN	EFFECTIVE DATE	REVISED BY	DATE	REFERENCE MODEL	REF REV	*****
DRW BY:	K. ROEMER	DRAWING STATUS: <b>Released</b>			TOLERANCES DO NOT APPLY DIMENSIONS ARE NOMINAL		SIZE D
DATE:	07/10/09	PRODUCTION APPROVED FOR RELEASED STATUS ONLY			ILC56000520		REV C

1

2

3

4