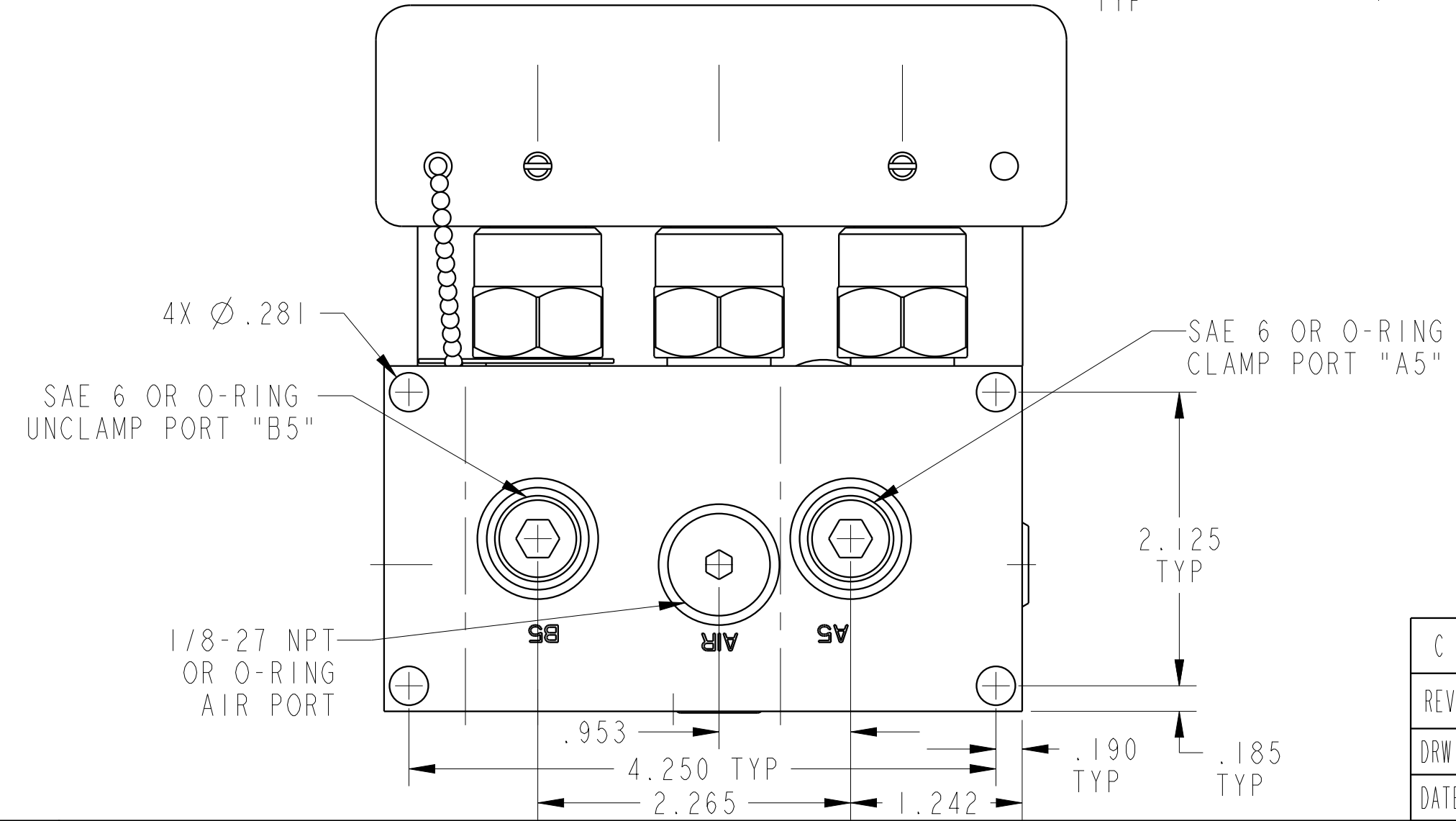
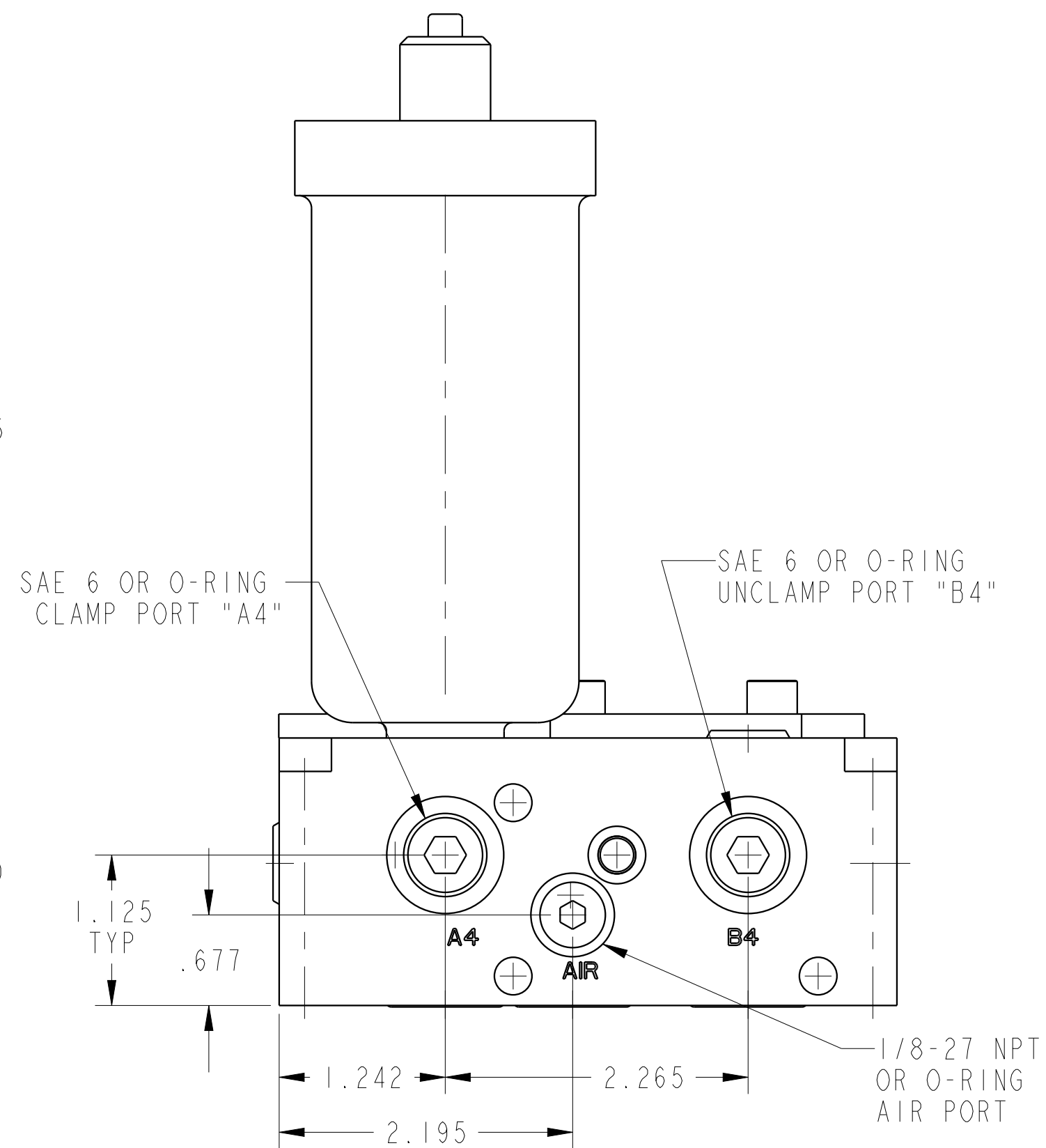
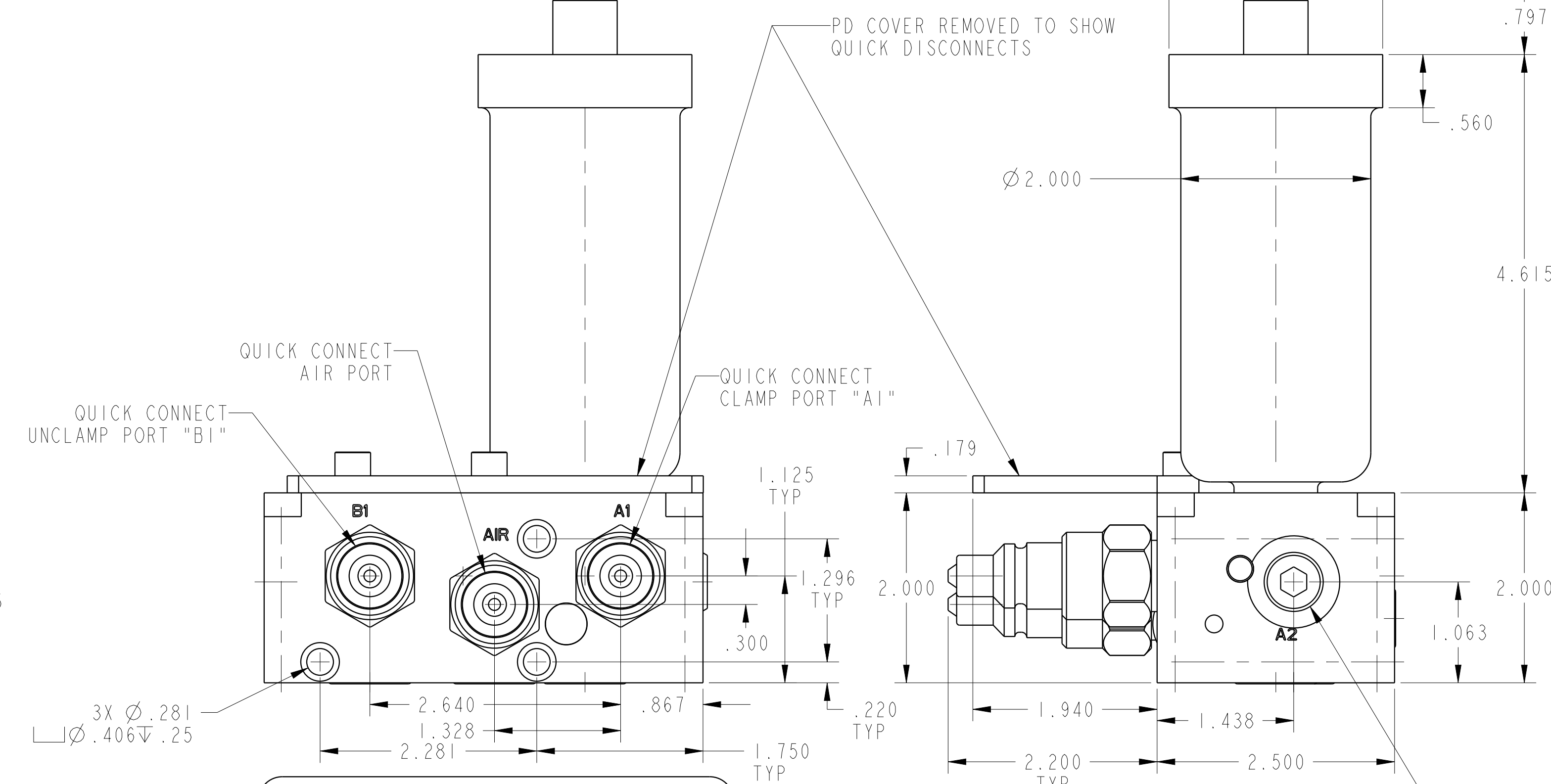
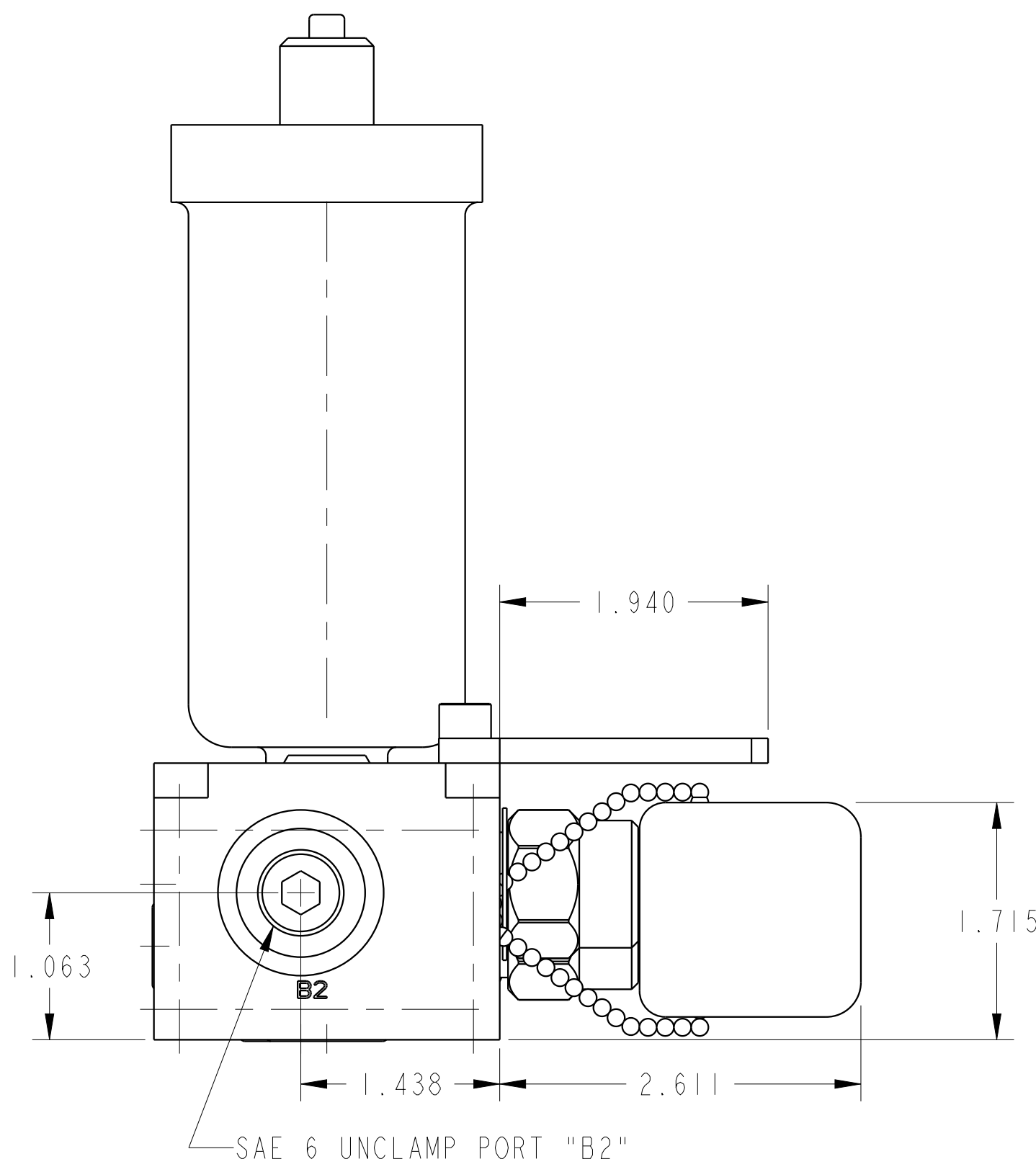


SCALE 0.500

ILC56000522 REV C ECN4131



| | | | |
|----------------------------|--|--|--|
| CAD CONTROL DRAWING | | | |
| | | VEKTEK, INC. 1334 E. SIXTH AVE. P.O. BOX 625 EMPORIA, KS. 66801 U.S.A. | |

| | | | | | | | |
|---------|--|----------------|------------|---------|-------------------------|---------|--------------------------|
| C | 4131 | RELEASE | NPETERS | 3/18/20 | 56000522 | F | PD, 2H, DUAL, 5000, PNEU |
| REV | IN ACCORDANCE WITH ECN | EFFECTIVE DATE | REVISED BY | DATE | REFERENCE MODEL | REF REV | ***** |
| DRW BY: | DRAWING STATUS: Released | | | | TOLERANCES DO NOT APPLY | | SIZE |
| DATE: | PRODUCTION APPROVED FOR RELEASED STATUS ONLY | | | | DIMENSIONS ARE NOMINAL | | D |
| | | | | | | | ILC56000522 |
| | | | | | | | REV C |