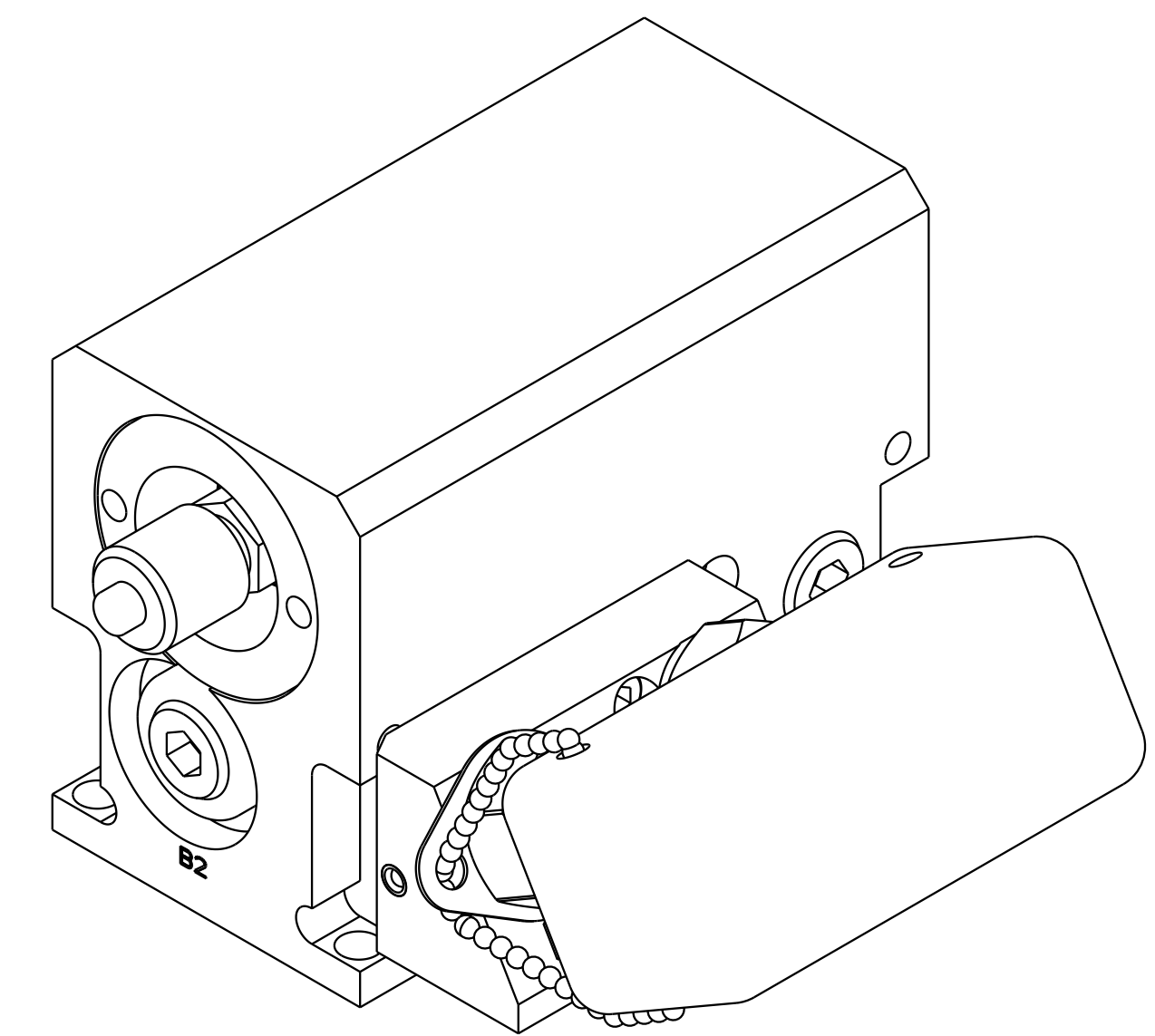
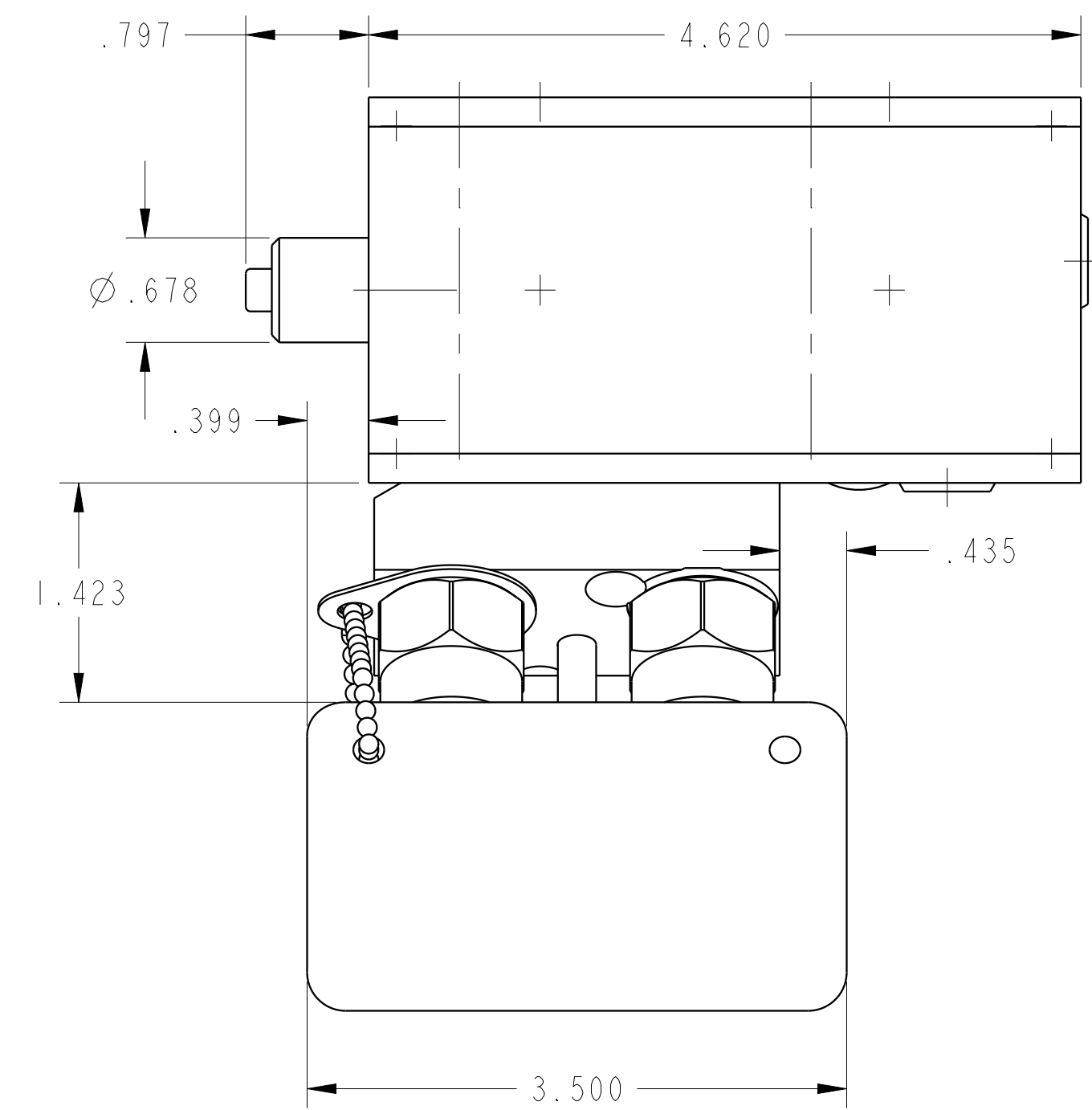


1

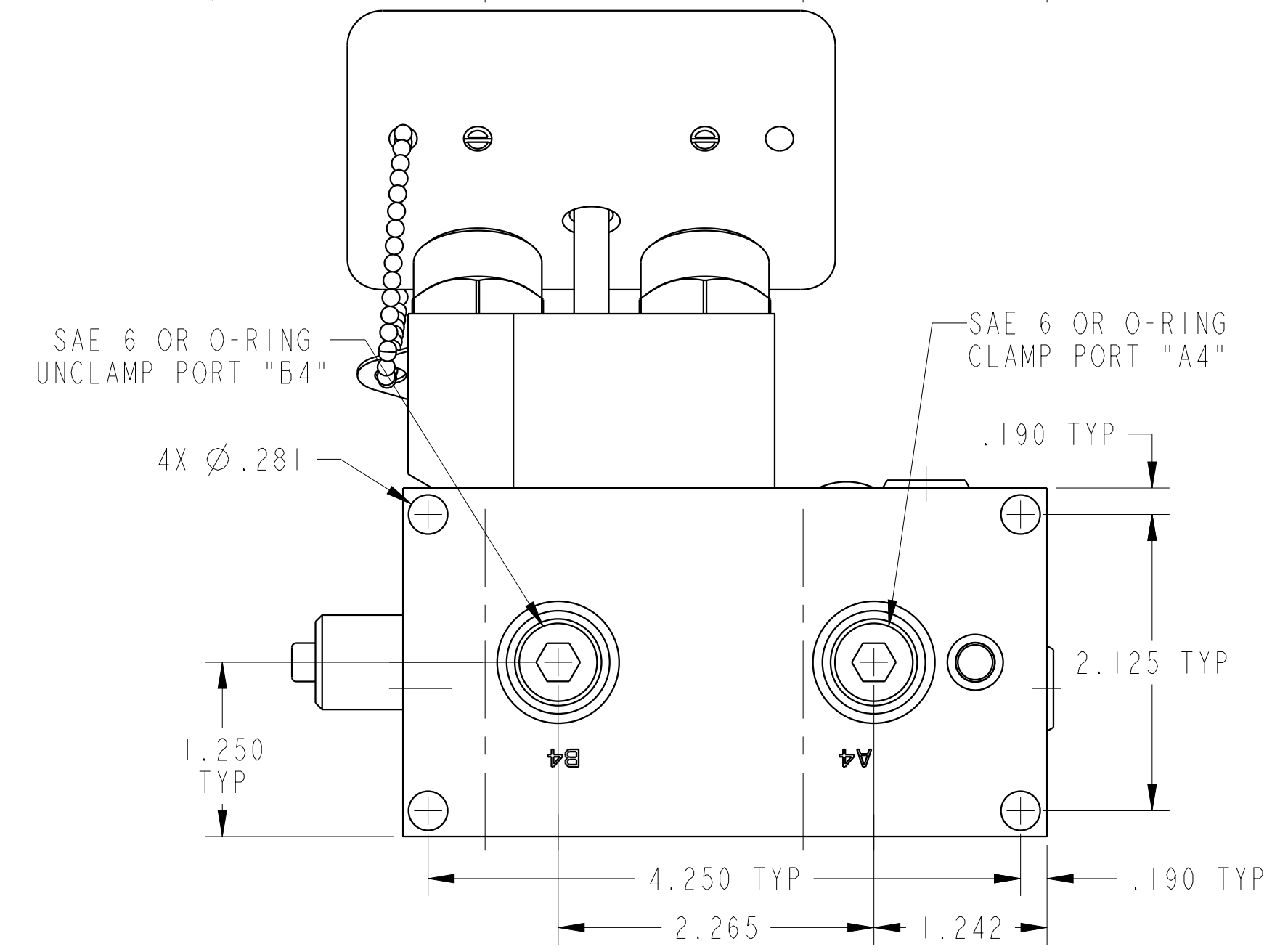
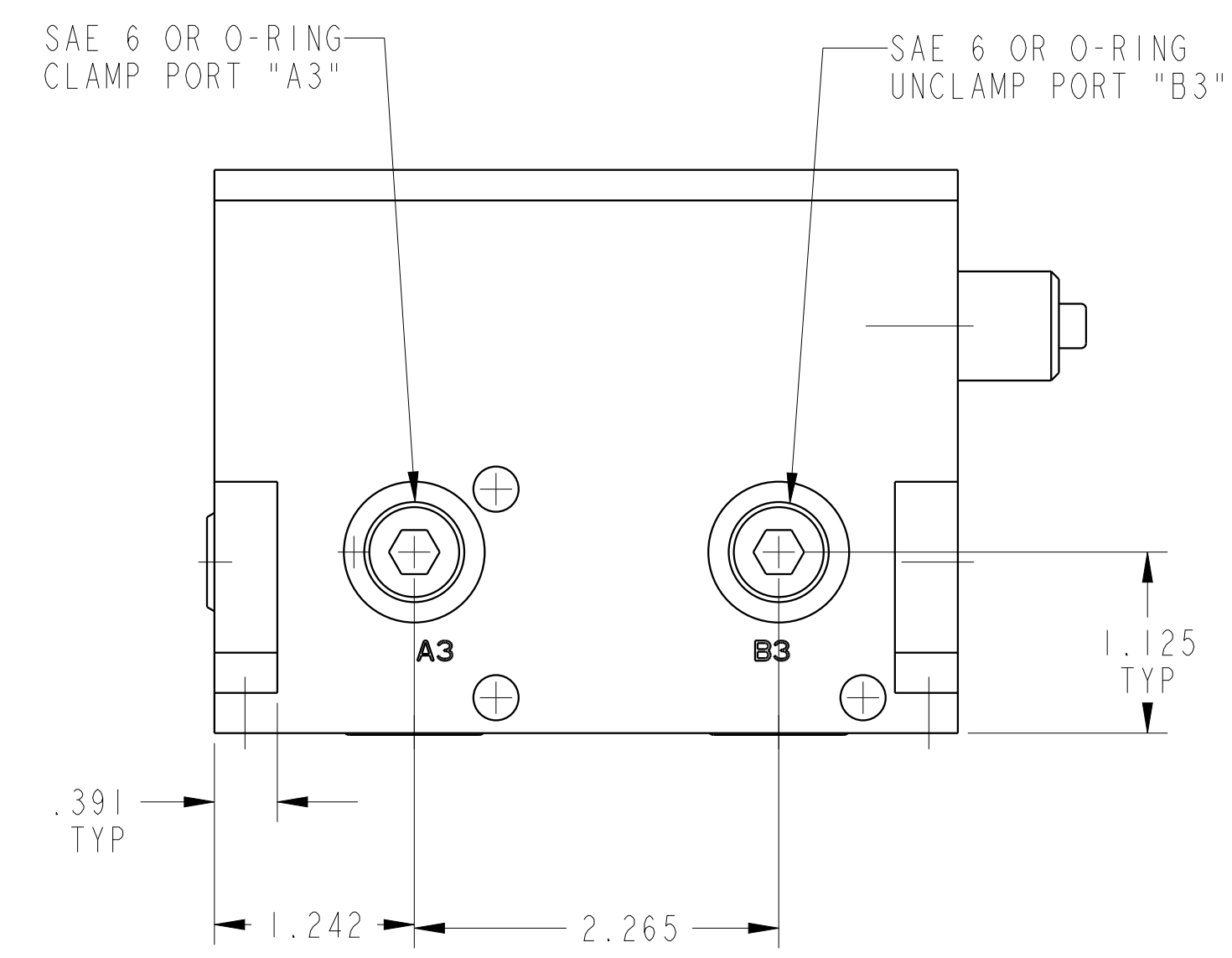
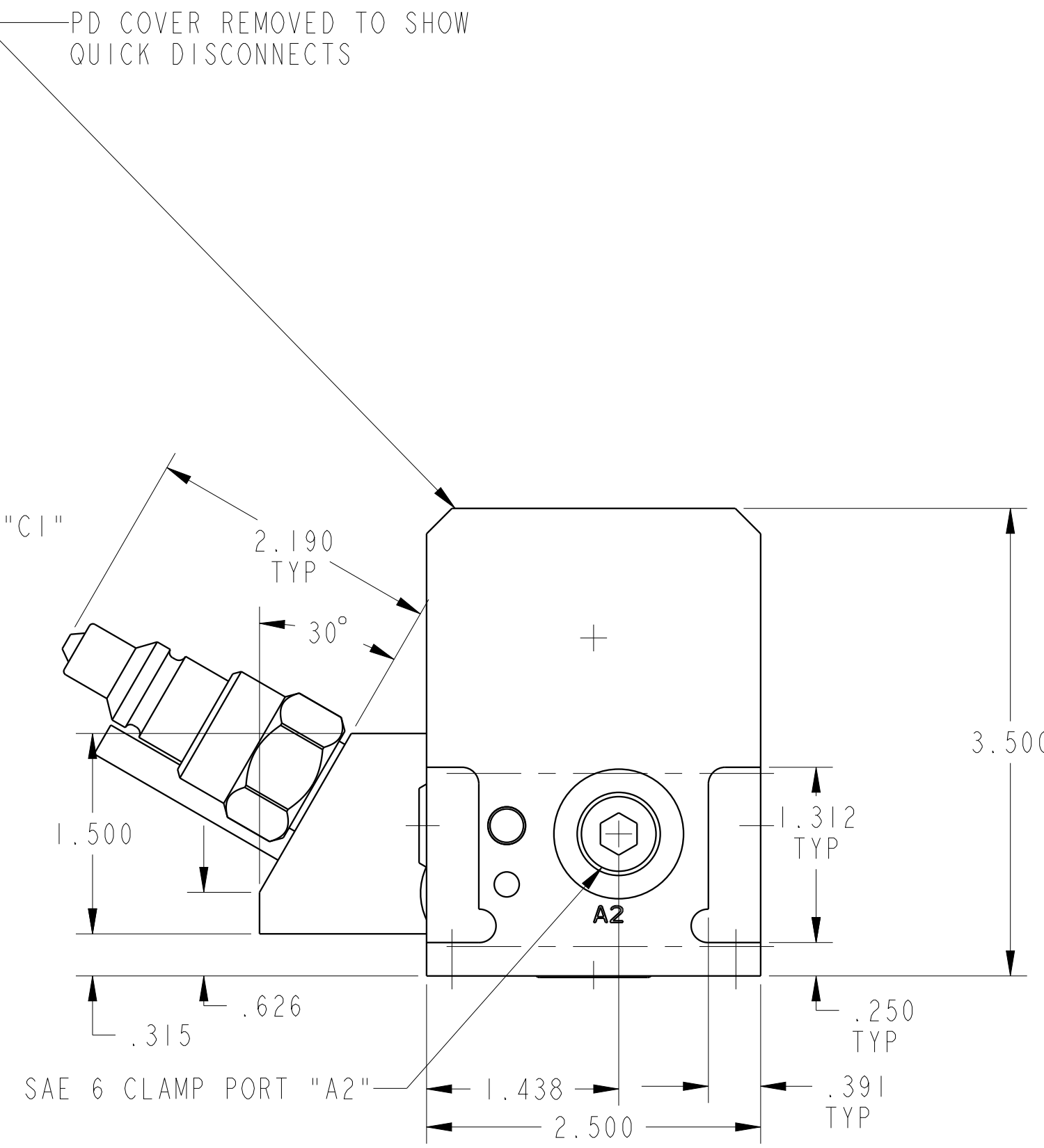
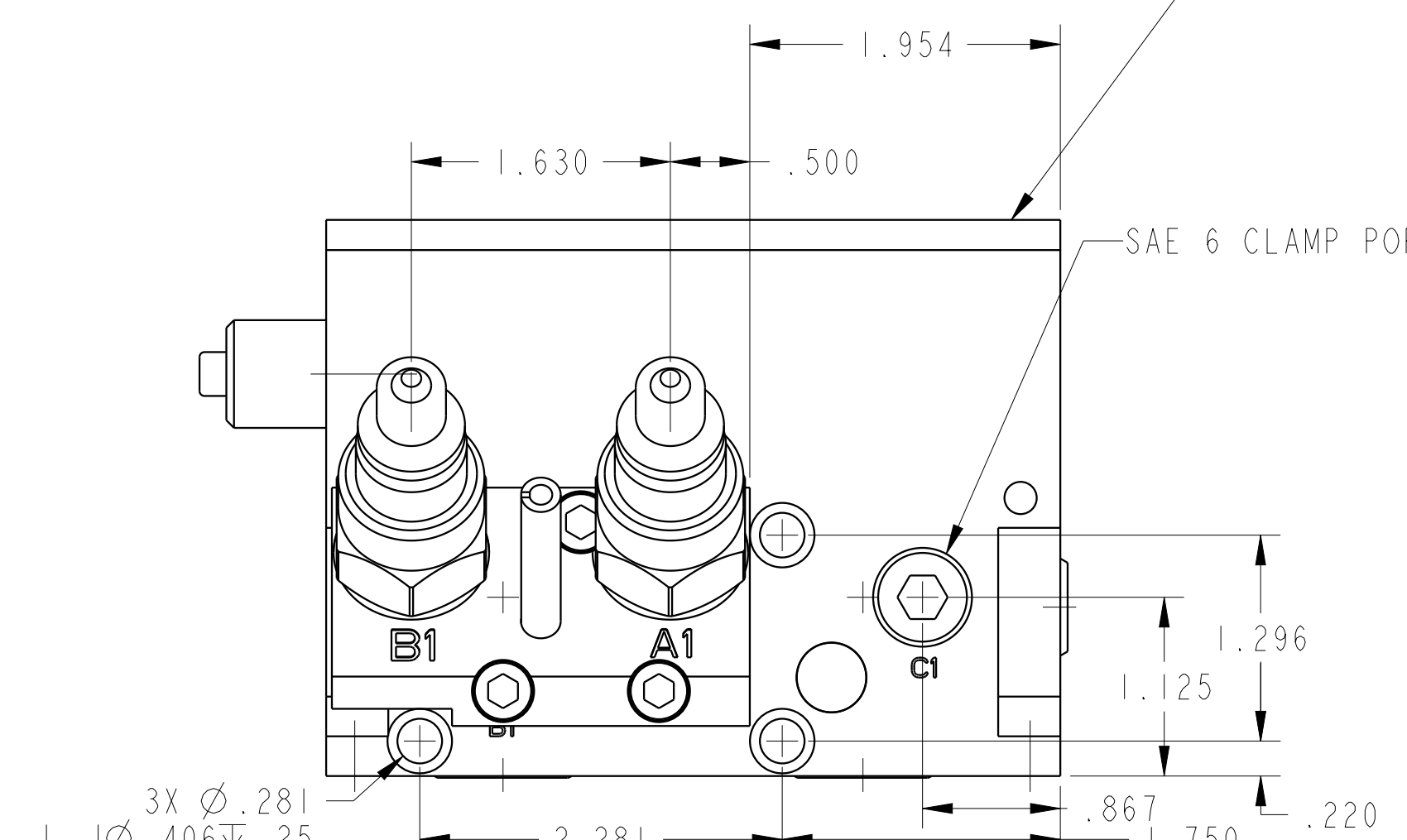
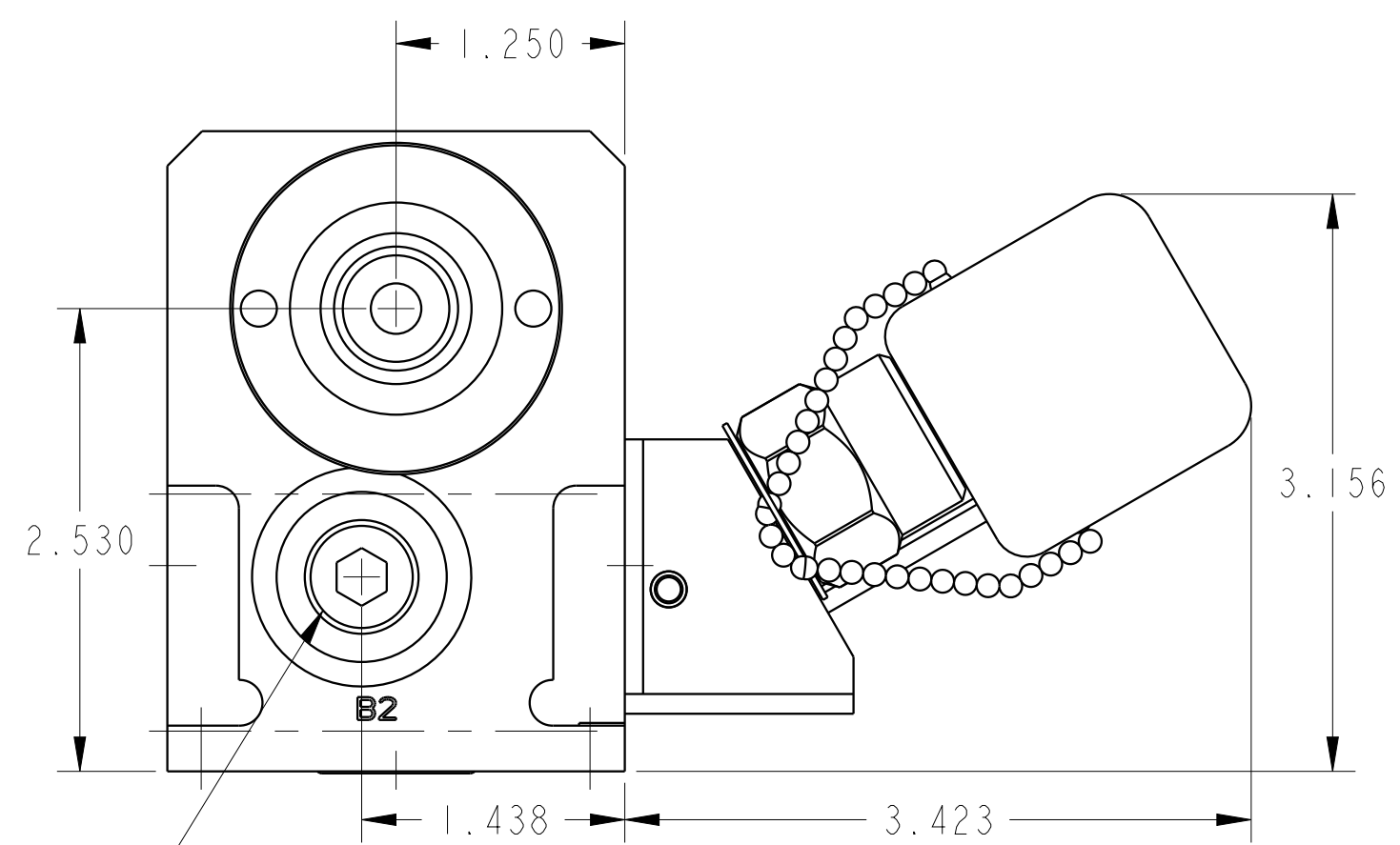
2

3

4



ILC56000524 REV C ECN4131



CAD CONTROL DRAWING

VEKTEK, INC.
1334 E. SIXTH AVE. P.O. BOX 625
EMPORIA, KS. 66801 U.S.A.

C	4131	RELEASE	NPETERS	3/16/20	56000524	F	PD, IH, DUAL, 5000, INT ACC
REV	IN ACCORDANCE WITH ECN	EFFECTIVE DATE	REVISED BY	DATE	REFERENCE MODEL	REF REV	*****
DRW BY:	DRAWING STATUS: Released				TOLERANCES DO NOT APPLY DIMENSIONS ARE NOMINAL		SIZE D
DATE:	PRODUCTION APPROVED FOR RELEASED STATUS ONLY						ILC56000524 REV C

1

2

3

4

SHEET 1 OF 1