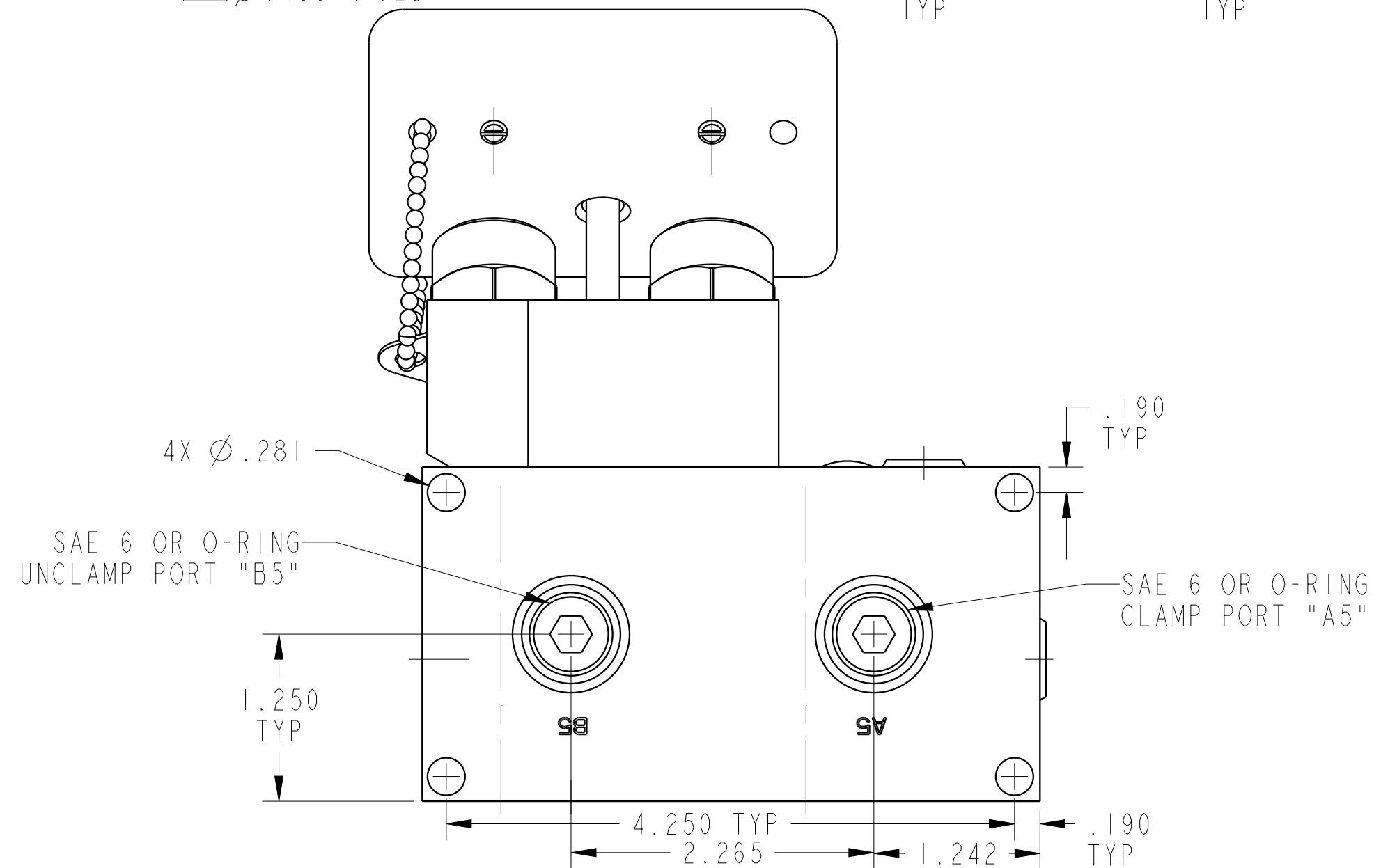
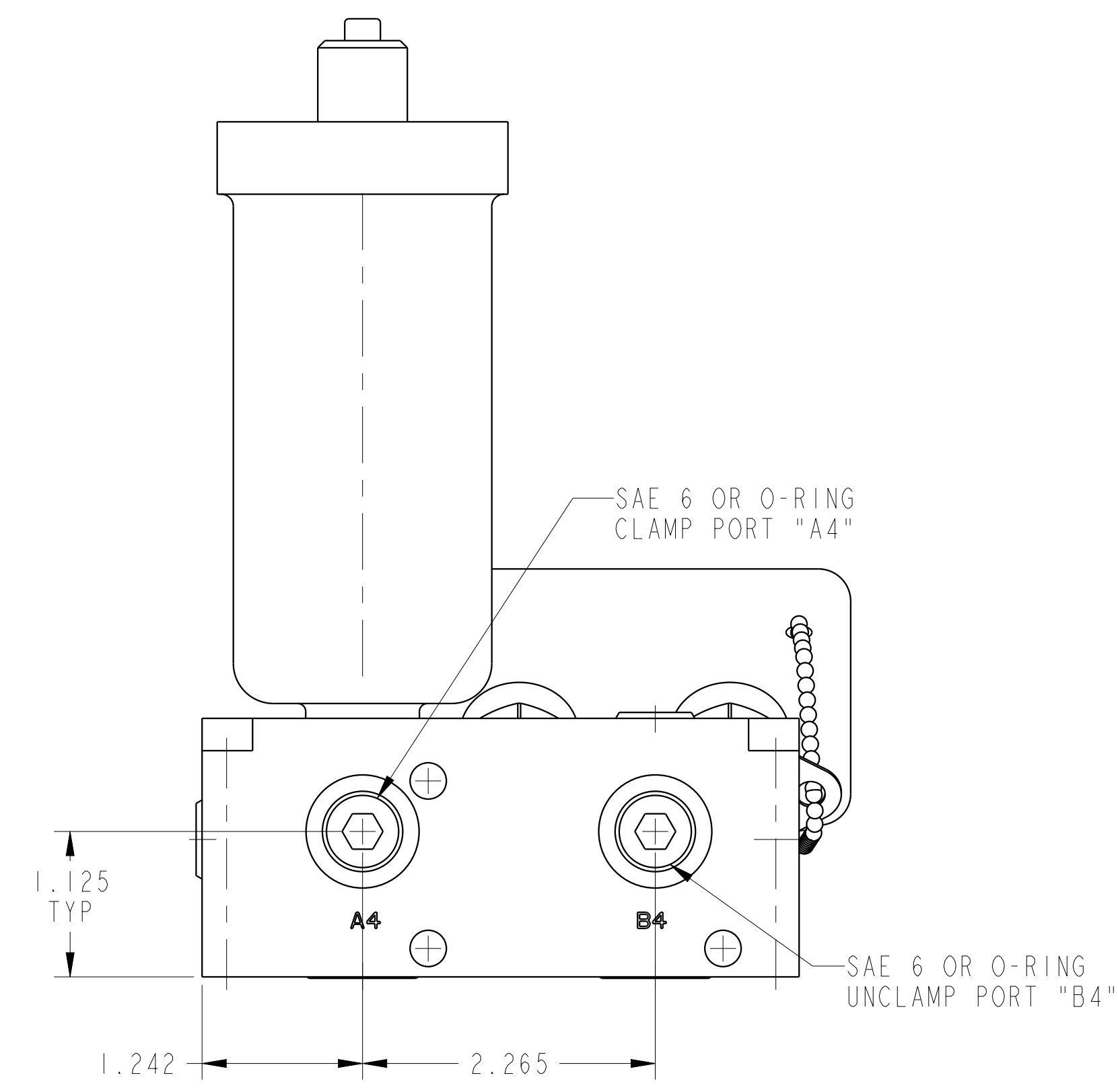
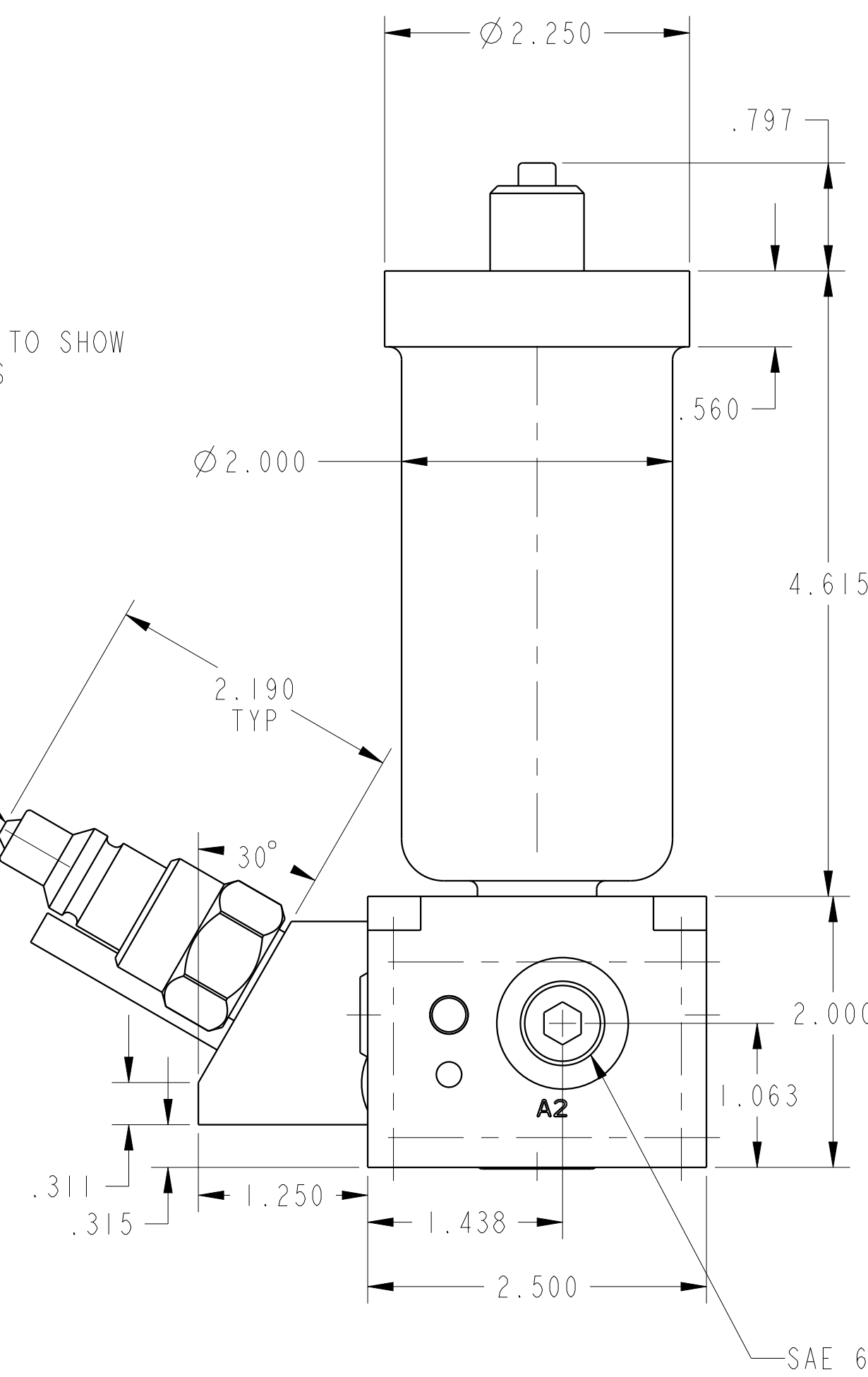
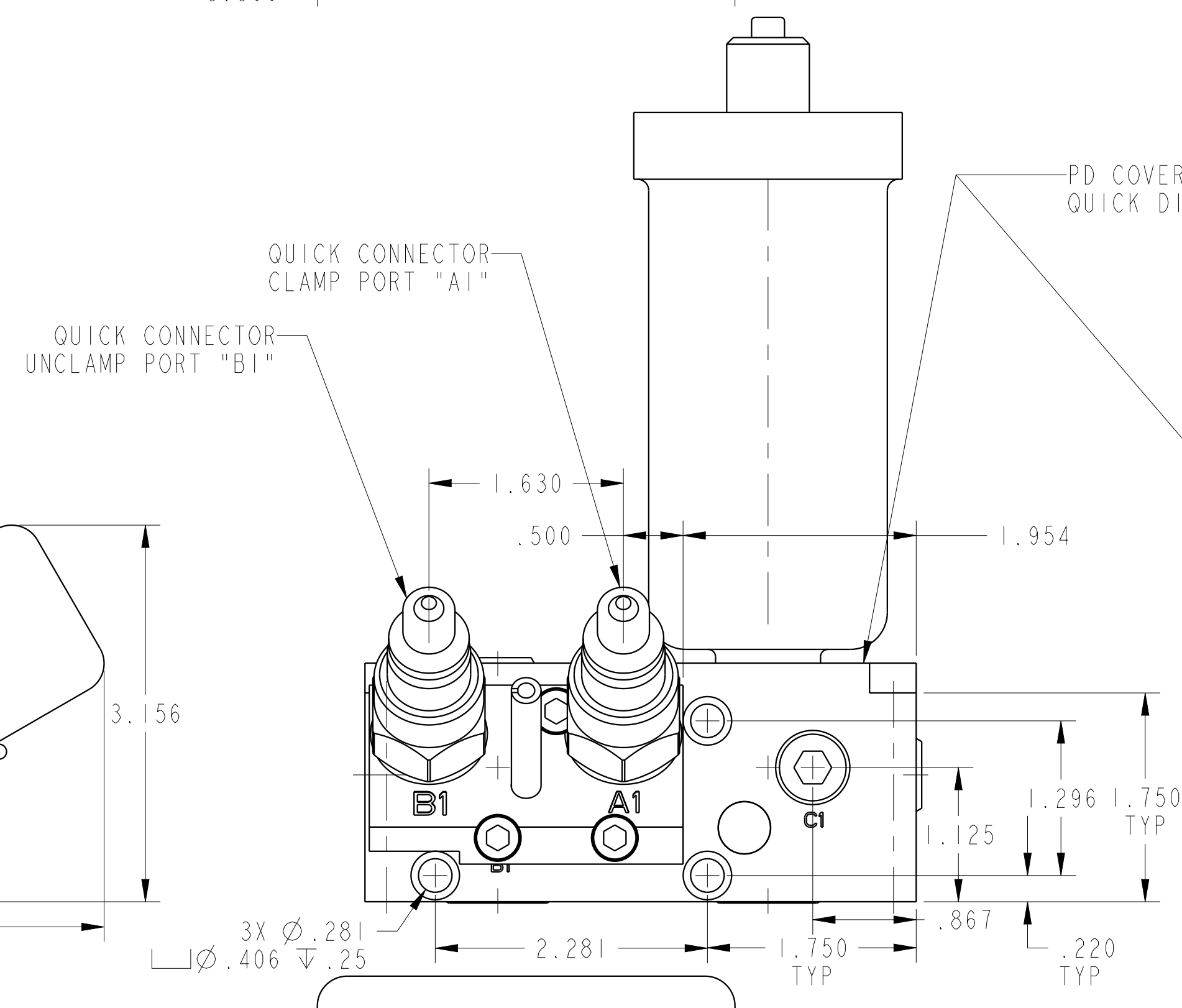
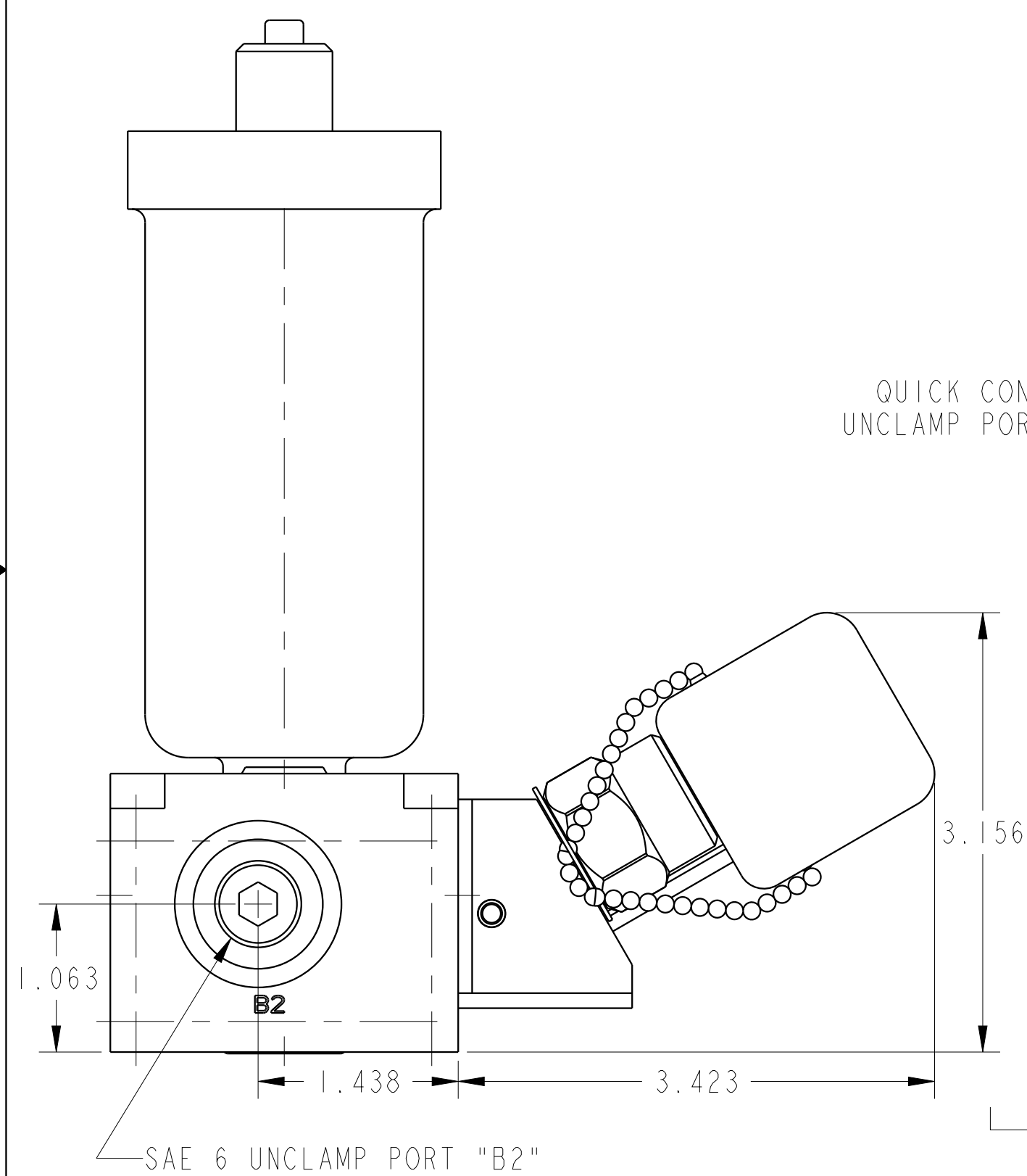
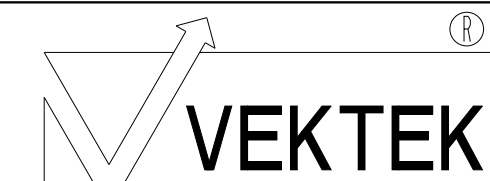


SCALE 0.500  
ILC56000525 REV C ECN4131



CAD CONTROL DRAWING



VEKTEK, INC.  
1334 E. SIXTH AVE. P.O. BOX 625  
EMPORIA, KS. 66801 U.S.A.

C	4131	RELEASE	NPETERS	3/16/20	56000525	E	PD, 1H, DUAL, 3500, EXT ACC
REV	IN ACCORDANCE WITH ECN	EFFECTIVE DATE	REVISED BY	DATE	REFERENCE MODEL	REF REV	*****
DRW BY:	K. ROEMER	DRAWING STATUS: Released			TOLERANCES DO NOT APPLY DIMENSIONS ARE NOMINAL		SIZE D
DATE:	07/10/09	PRODUCTION APPROVED FOR RELEASED STATUS ONLY			ILC56000525		REV C