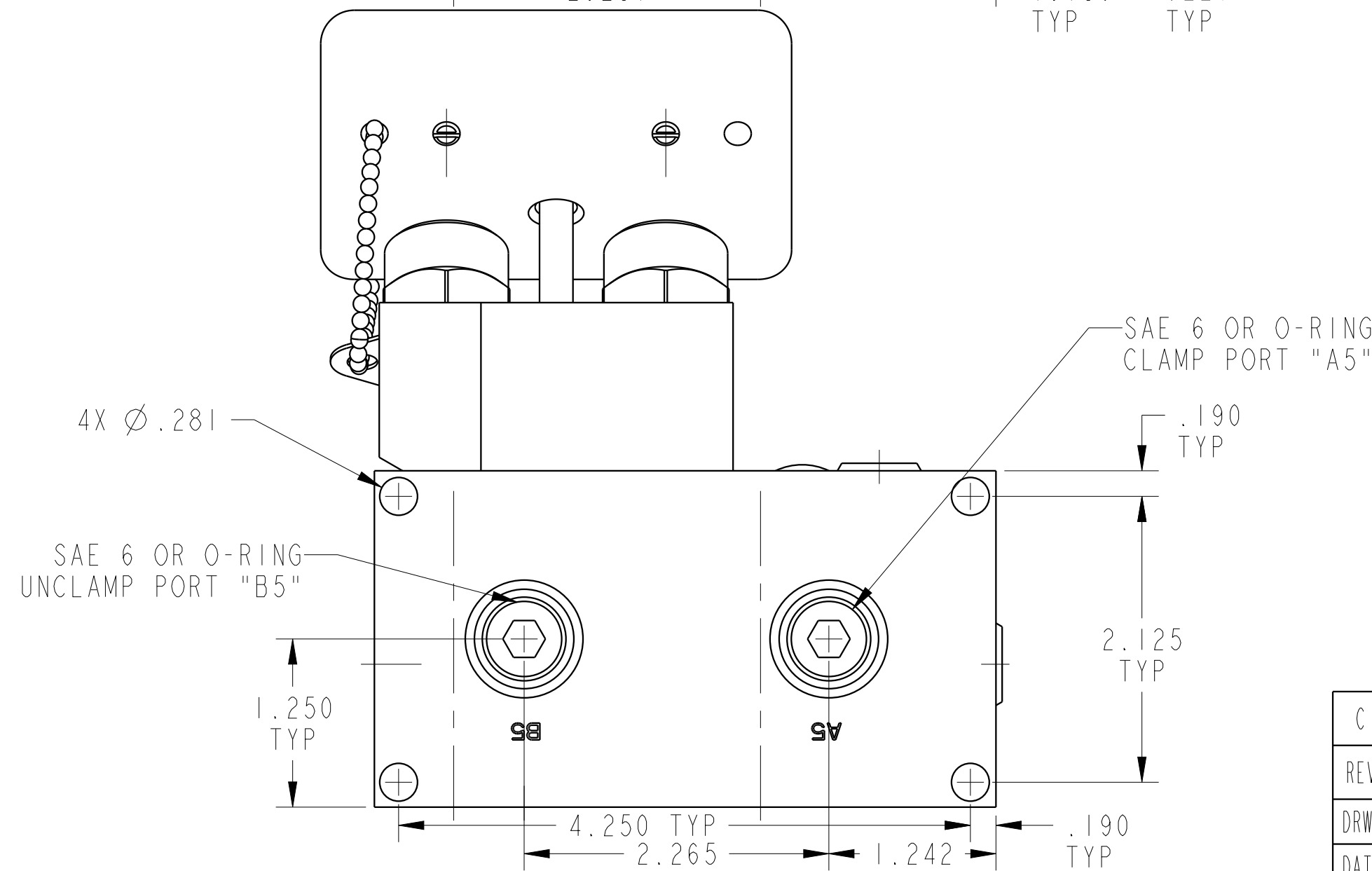
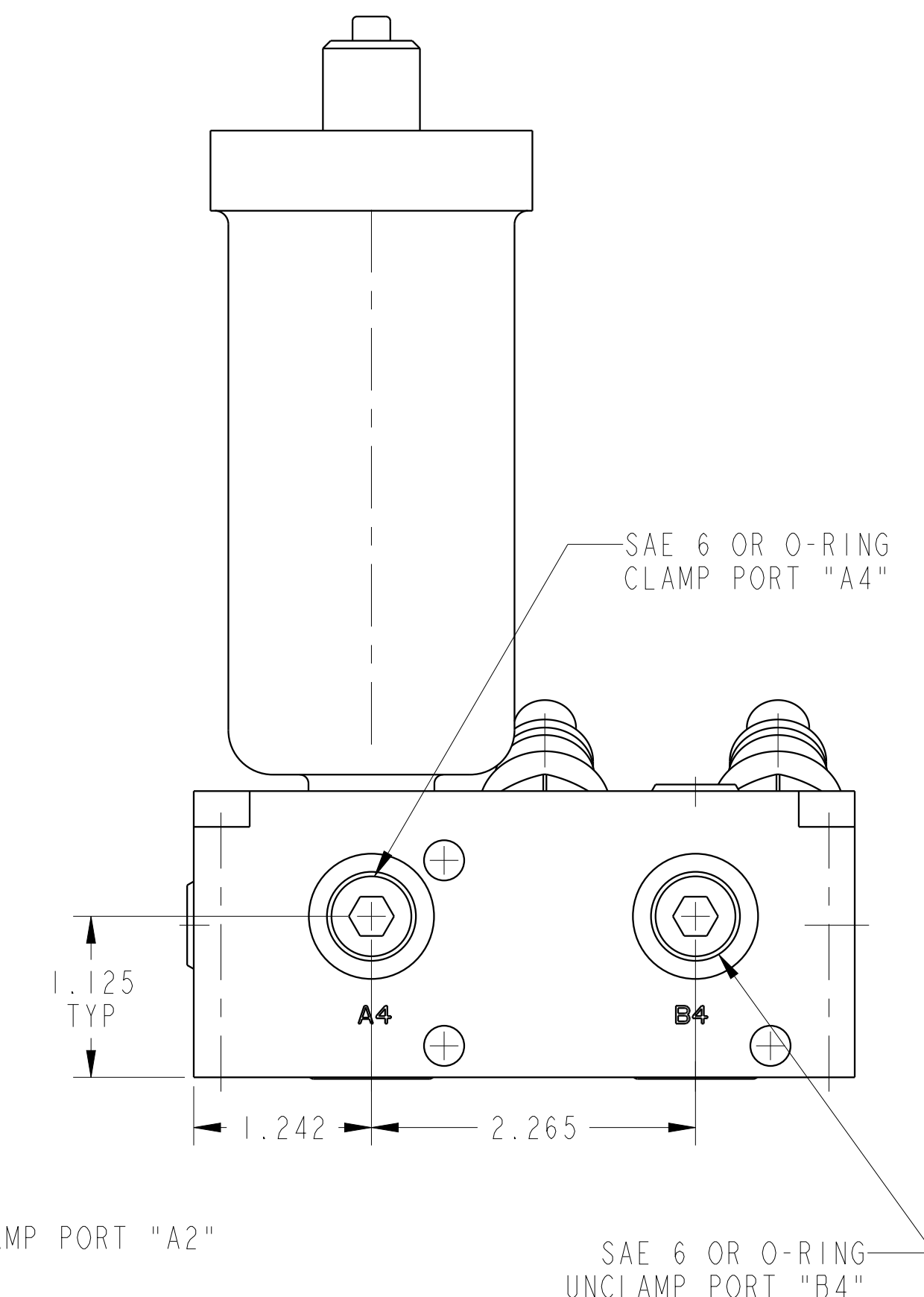
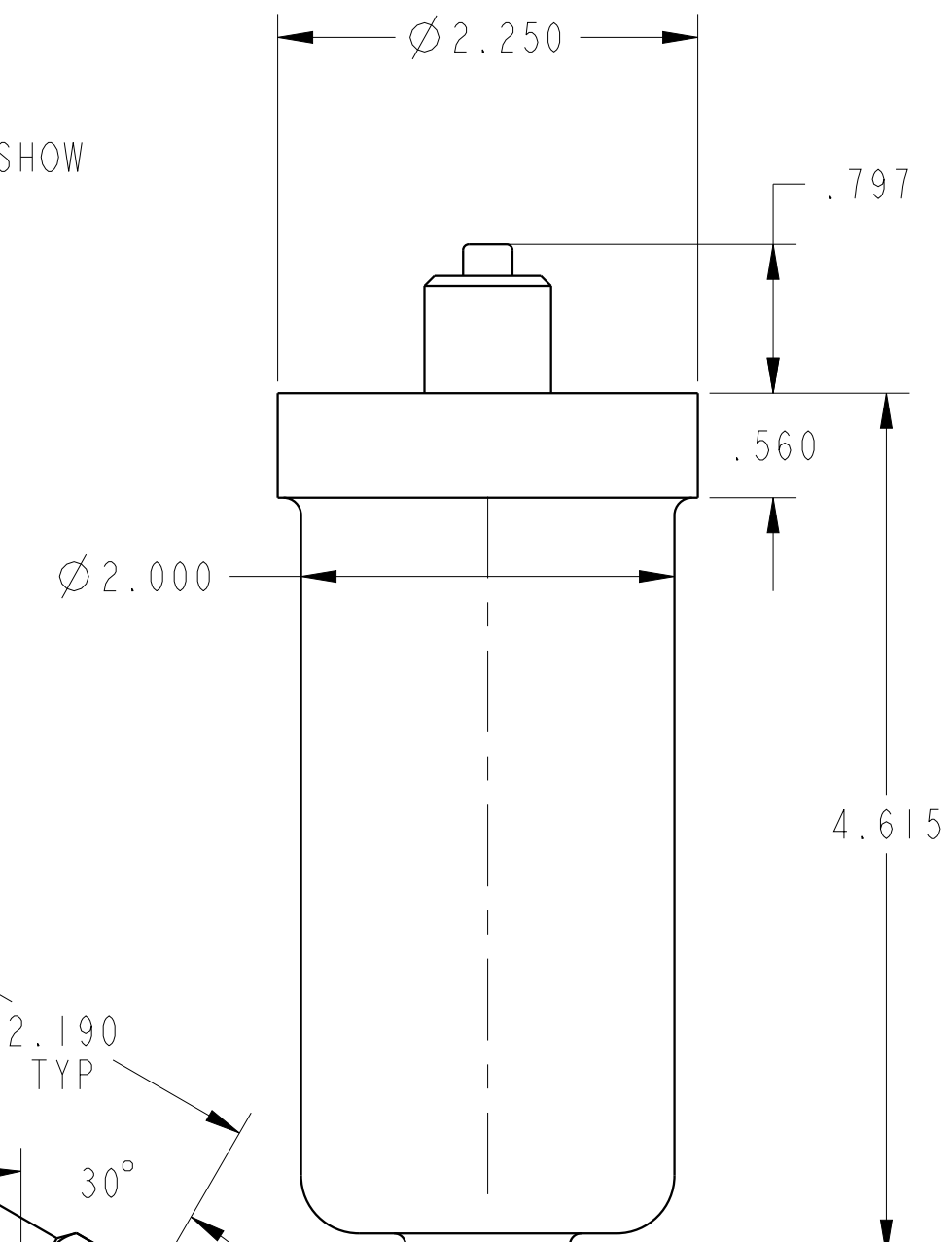
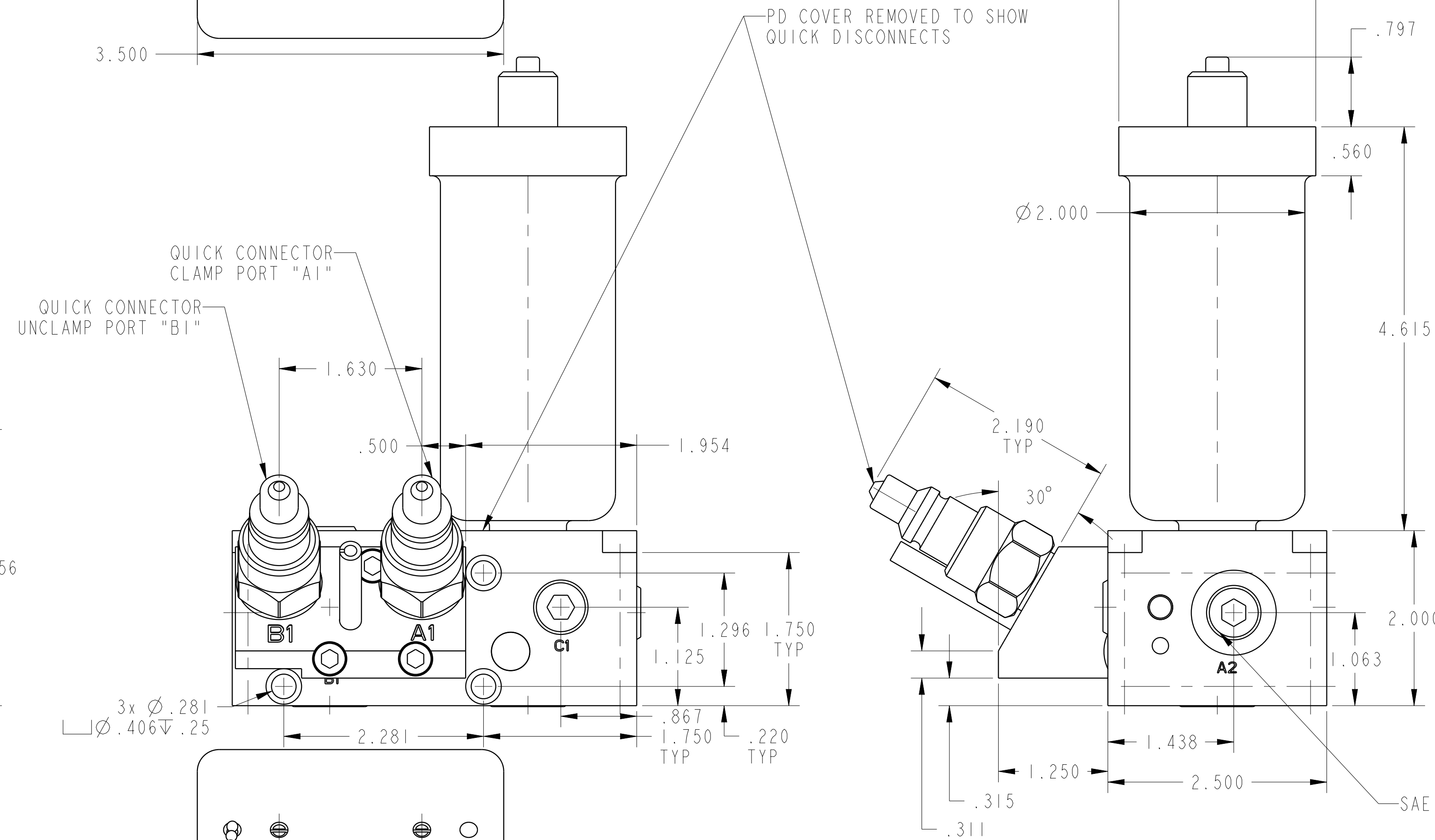
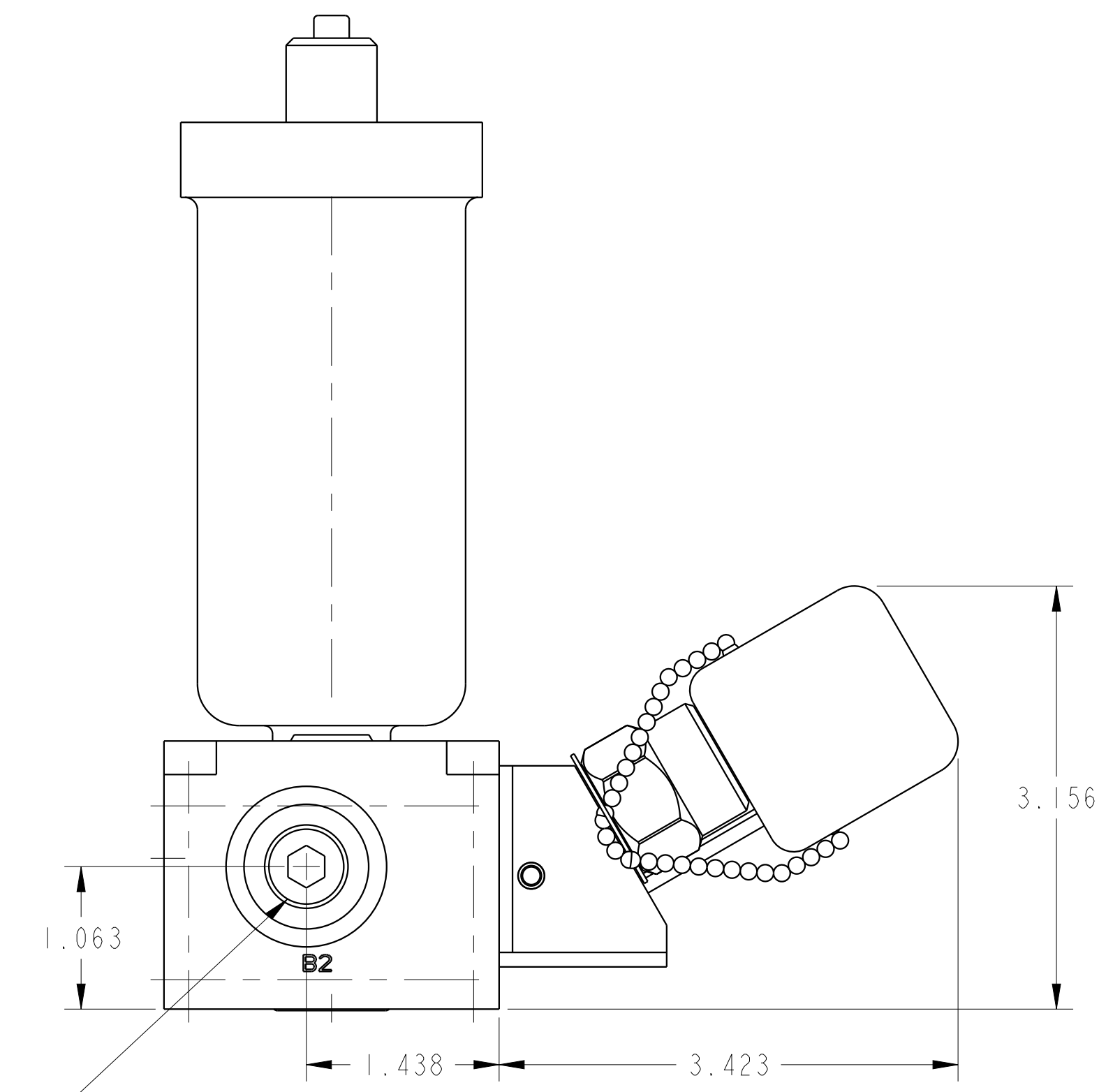
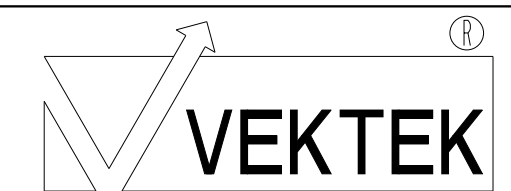


SCALE 0.500
ILC56000526 REV C ECN4131



CAD CONTROL DRAWING



VEKTEK, INC.
1334 E. SIXTH AVE. P.O. BOX 625
EMPORIA, KS. 66801 U.S.A.

C	4131	RELEASE	NPETERS	3/16/20
REV	IN ACCORDANCE WITH ECN	EFFECTIVE DATE	REVISED BY	DATE
DRW BY:	DRAWING STATUS: Released			
DATE:	PRODUCTION APPROVED FOR RELEASED STATUS ONLY			

56000526	E	PD, 1H, DUAL, 5000, EXT ACC
REFERENCE MODEL	REF REV	*****
TOLERANCES DO NOT APPLY		SIZE D
DIMENSIONS ARE NOMINAL		ILC56000526

FORM FEG036, Rev. B
