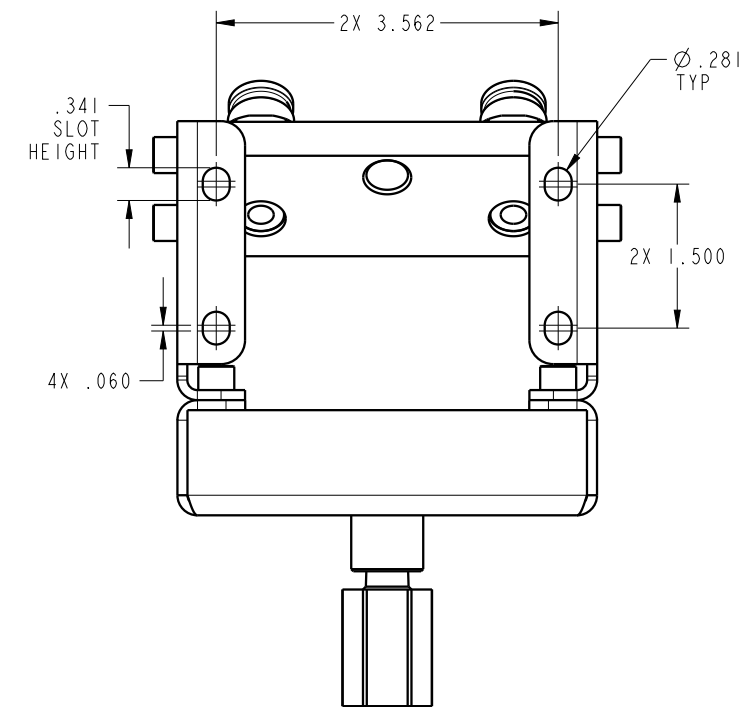
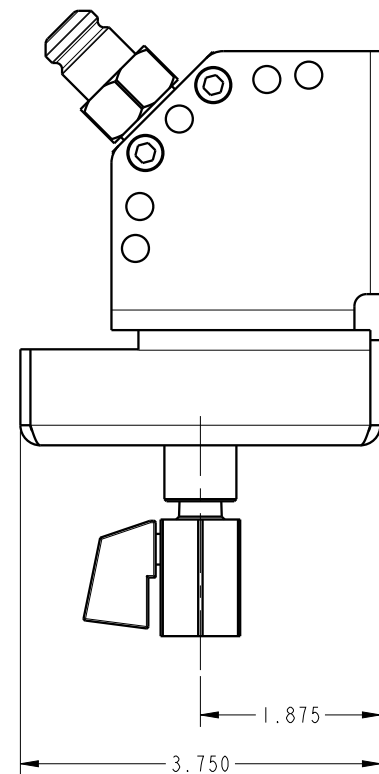
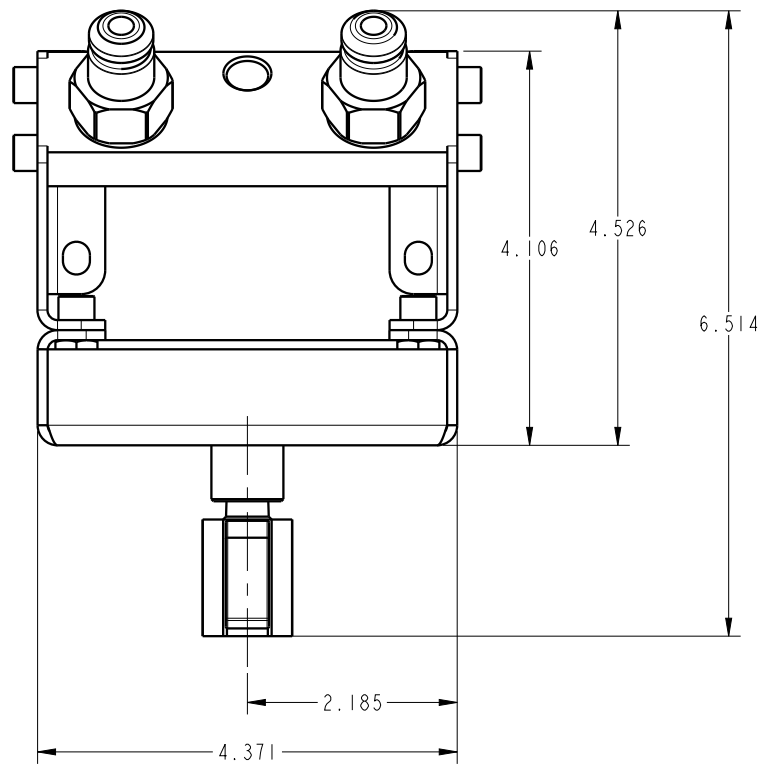


ILC56000528 REV A ECN 3191



**CAD CONTROL
DRAWING**



VEKTEK, INC.
1334 E. SIXTH AVE. P.O. BOX 625
EMPORIA, KS. 66801 U.S.A.

A	3191	RELEASE	MAJ	3/28/17	56000528	A	ASSY, DOCKING STATION, W/O PROX, 2H
REV	IN ACCORDANCE WITH ECN	EFFECTIVE DATE	REVISED BY	DATE	REFERENCE MODEL	REF REV	*****
DRW BY:	MAJ	DRAWING STATUS: Released			TOLERANCES DO NOT APPLY	SIZE	ILC56000528
DATE:	3/28/17	PRODUCTION APPROVED FOR RELEASED STATUS ONLY			DIMENSIONS ARE NOMINAL	B	

FORM FEG036, Rev. B

SHEET 1 OF 1