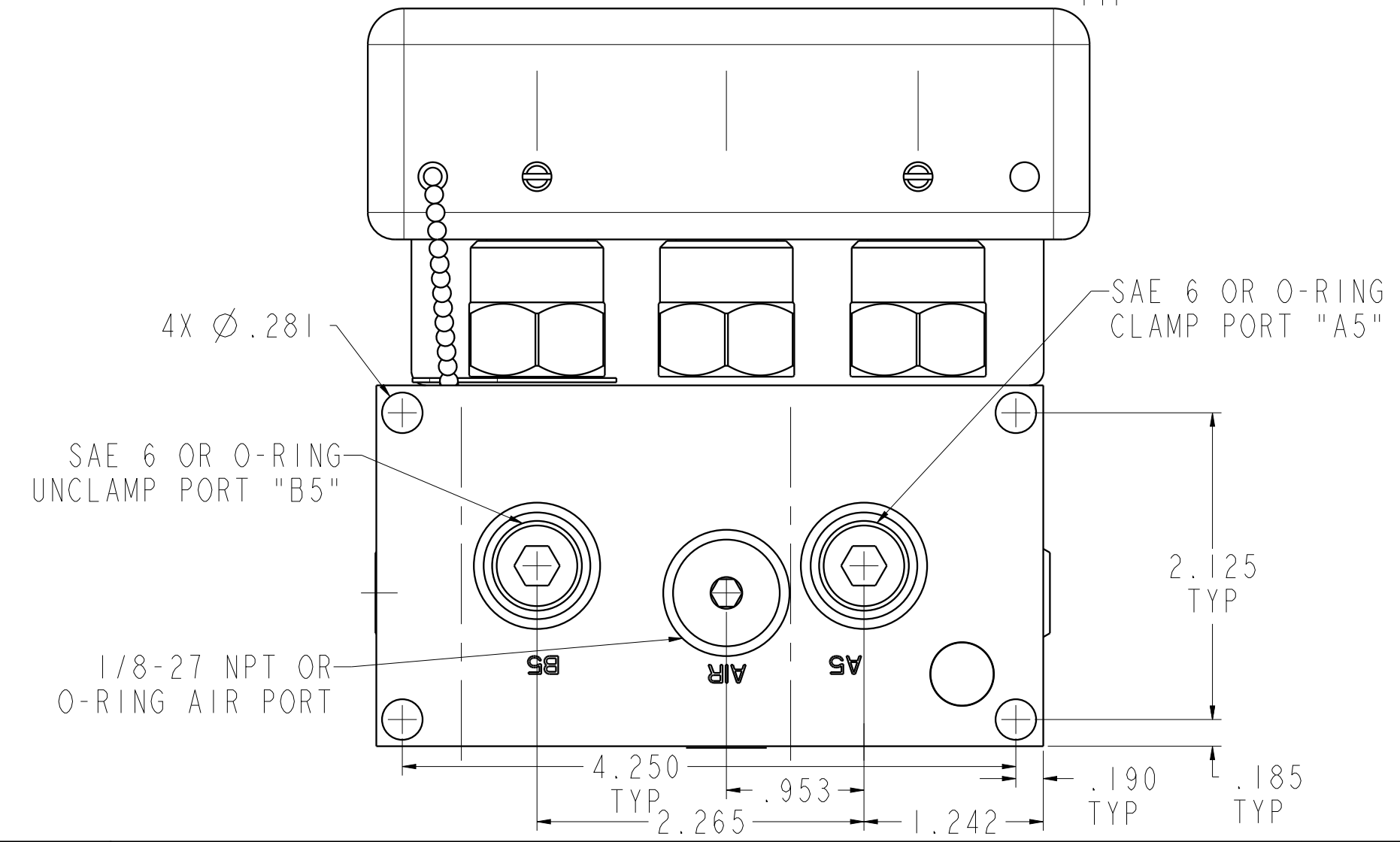
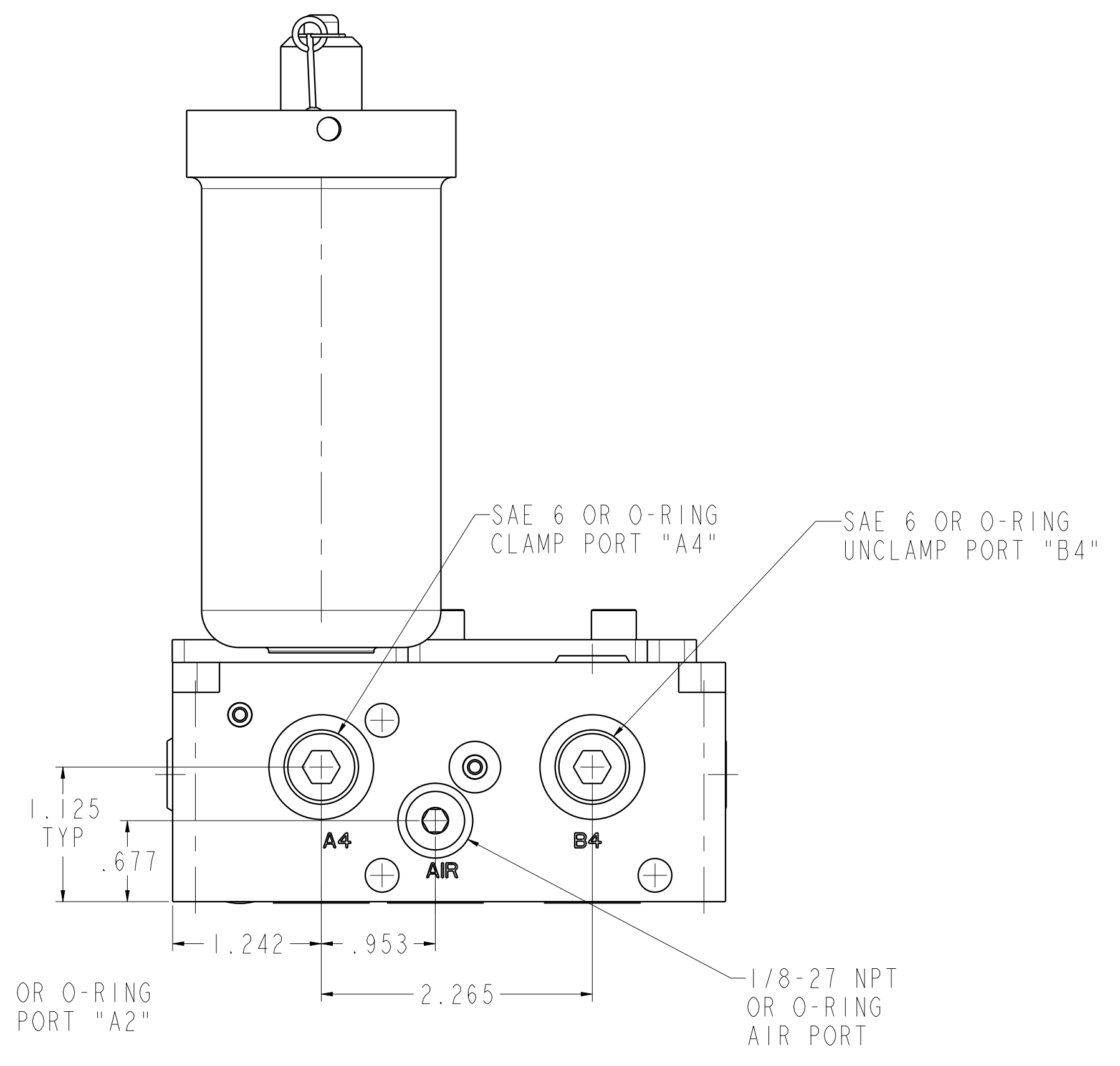
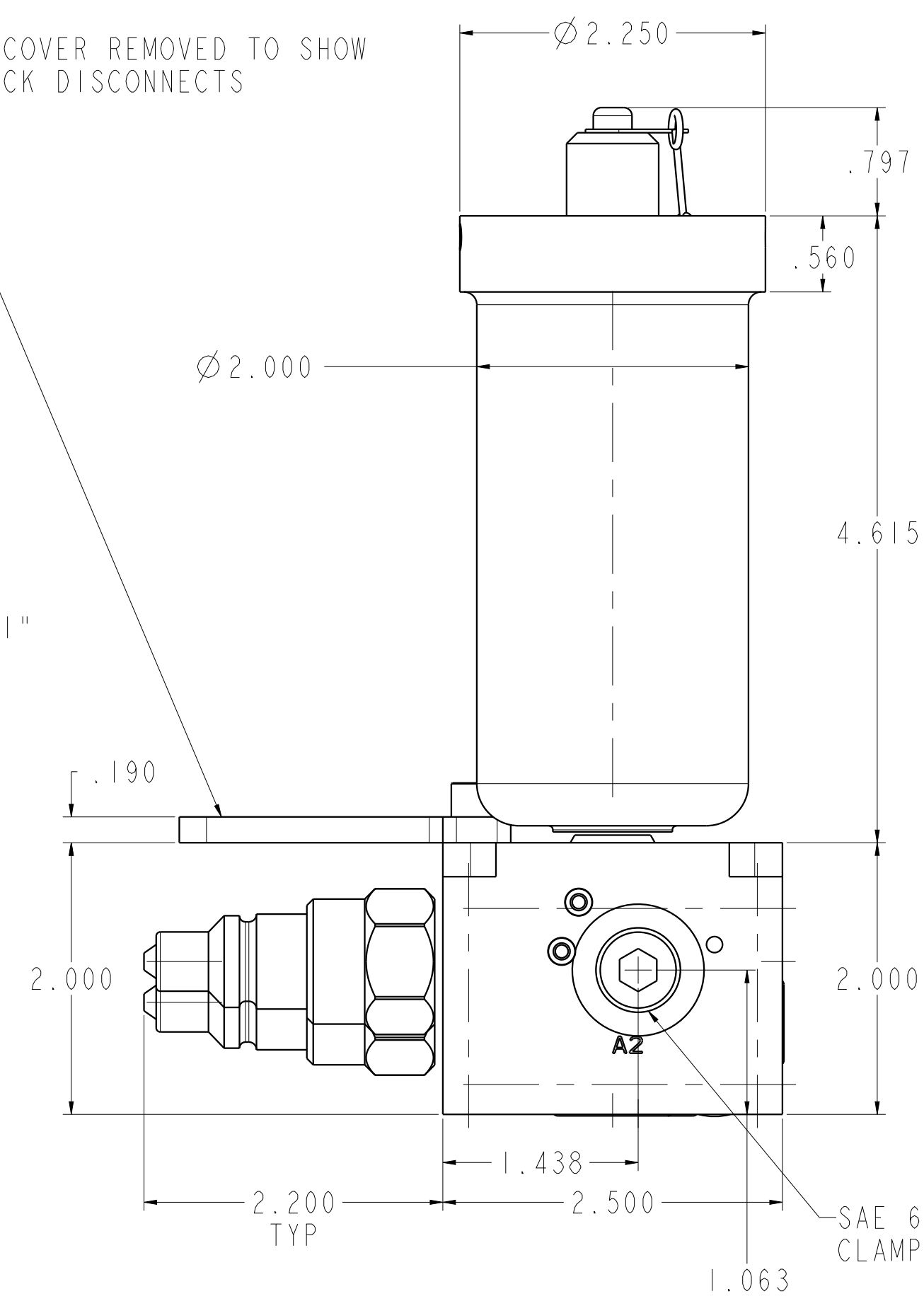
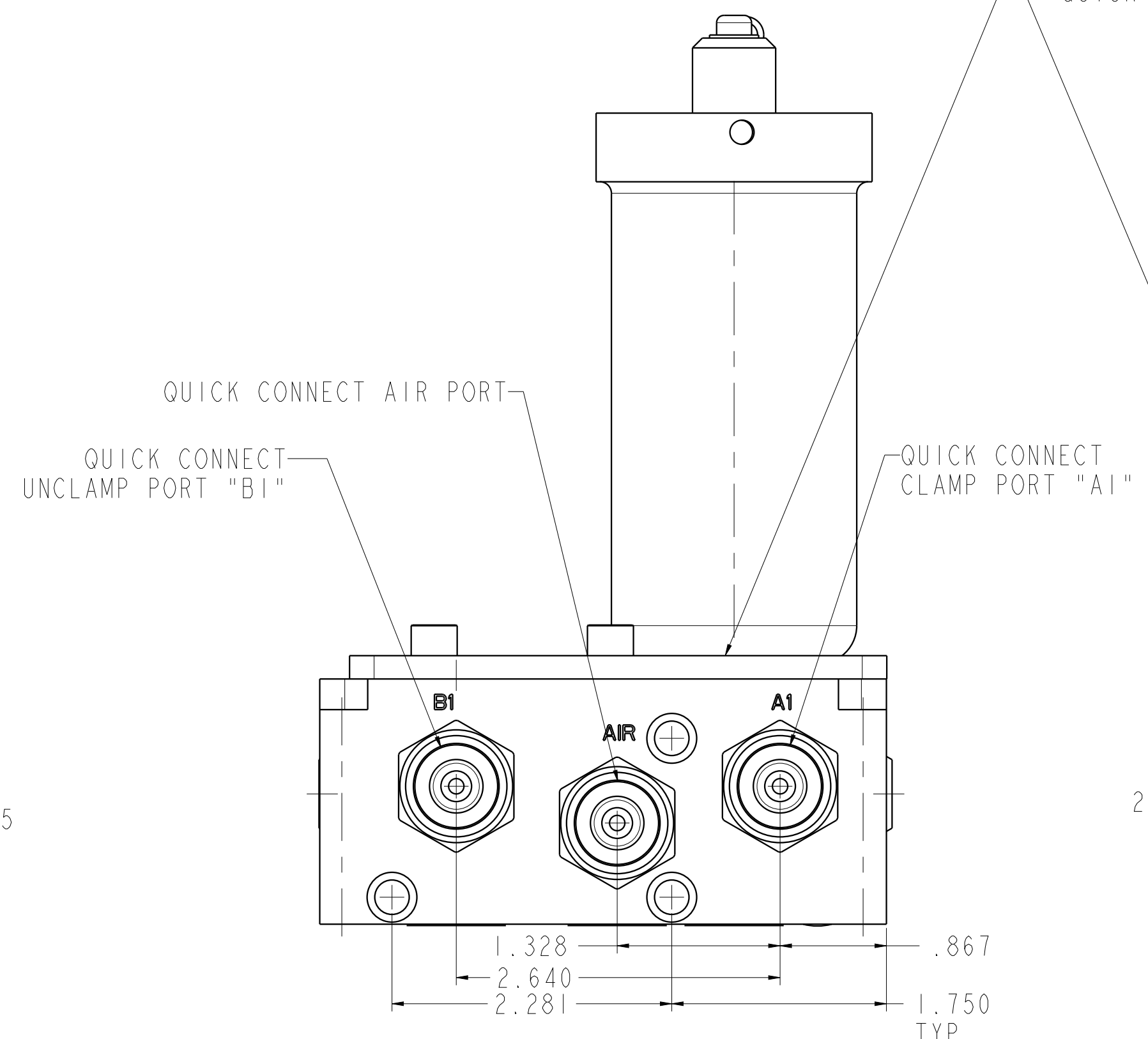
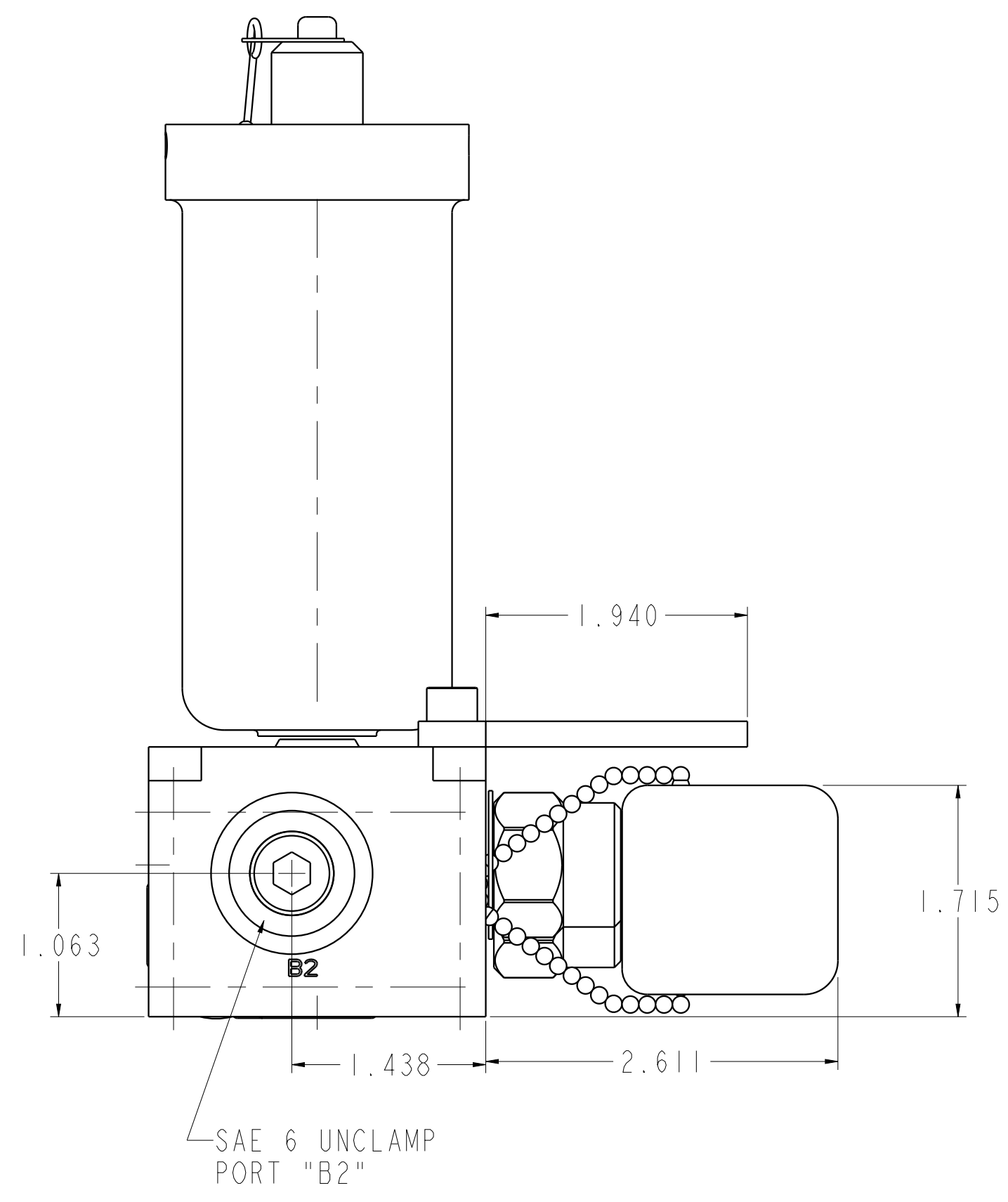


SCALE 0.500
 ILC56000530 REV B ECN4131



CAD CONTROL DRAWING			
		VEKTEK, INC. 1334 E. SIXTH AVE. P.O. BOX 625 EMPORIA, KS. 66801 U.S.A.	

B	4131	RELEASE	NPETERS	3/19/20	56000530	B	ASSY, PD, 2H, DUAL, 1500, PNEU
REV	IN ACCORDANCE WITH ECN	EFFECTIVE DATE	REVISED BY	DATE	REFERENCE MODEL	REF REV	*****
DRW BY:	DLG	DRAWING STATUS: Released			TOLERANCES DO NOT APPLY DIMENSIONS ARE NOMINAL		SIZE D
DATE:	8/9/18	PRODUCTION APPROVED FOR RELEASED STATUS ONLY			FORM FEG036, Rev. B		ILC56000530 REV B