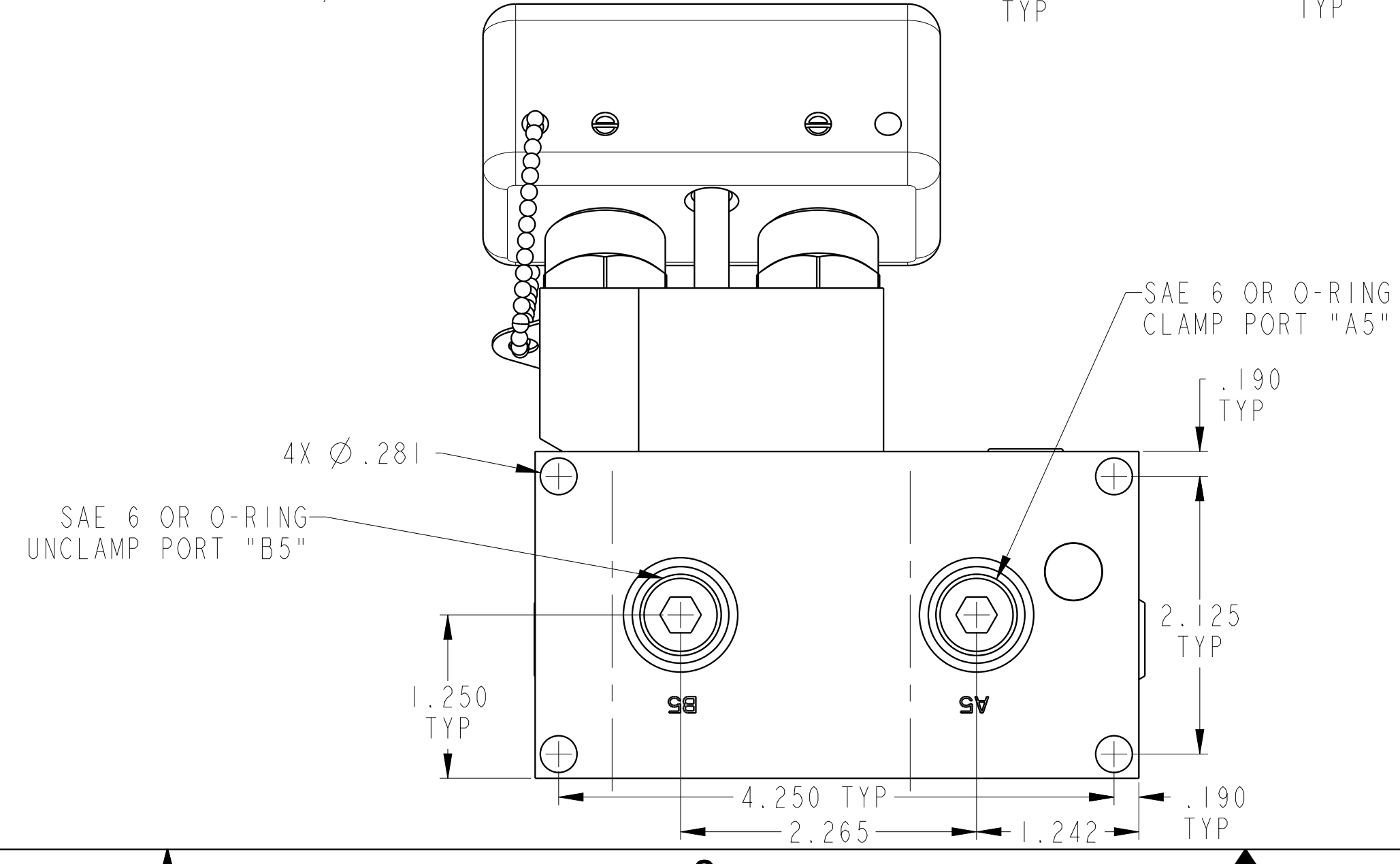
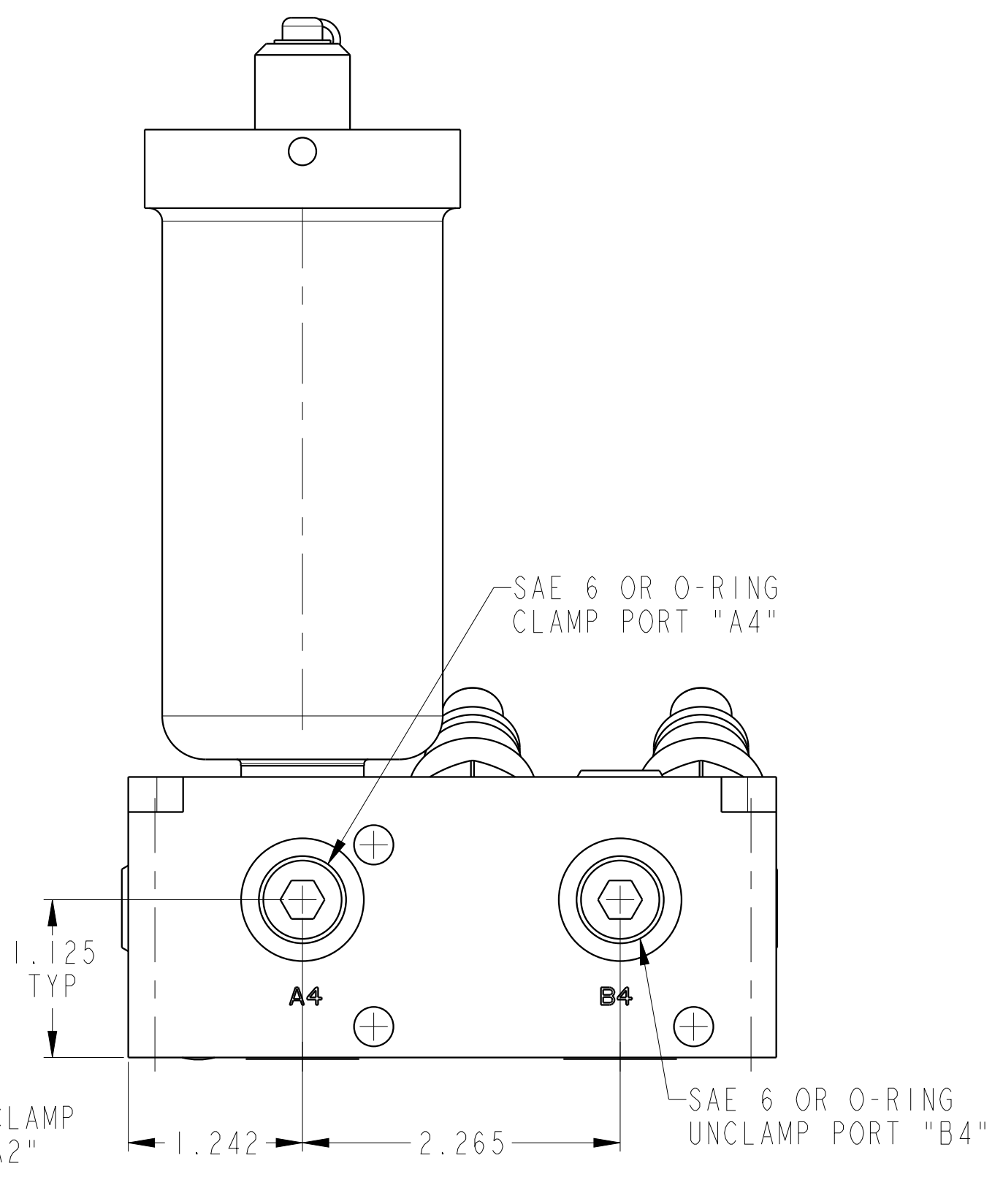
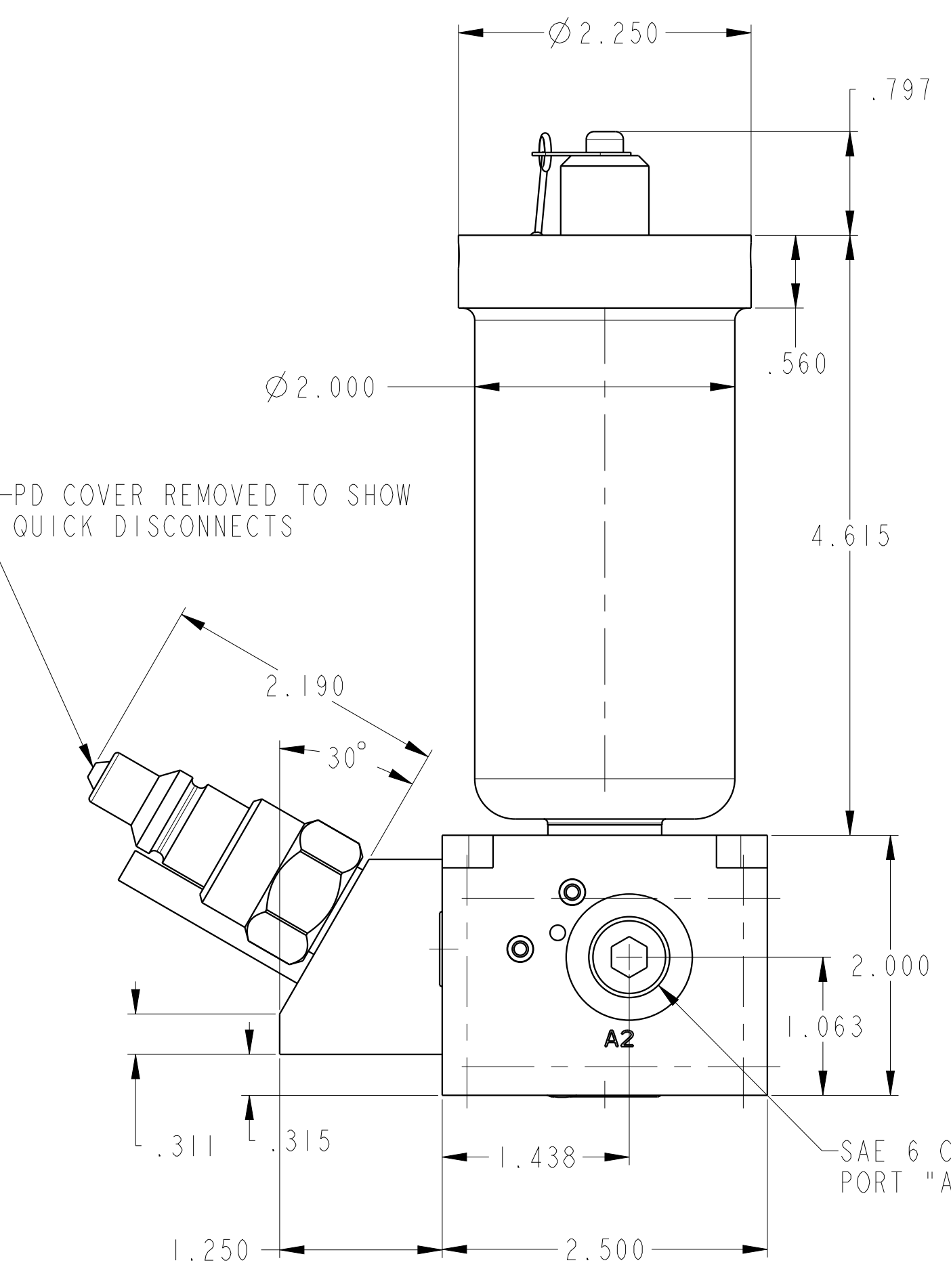
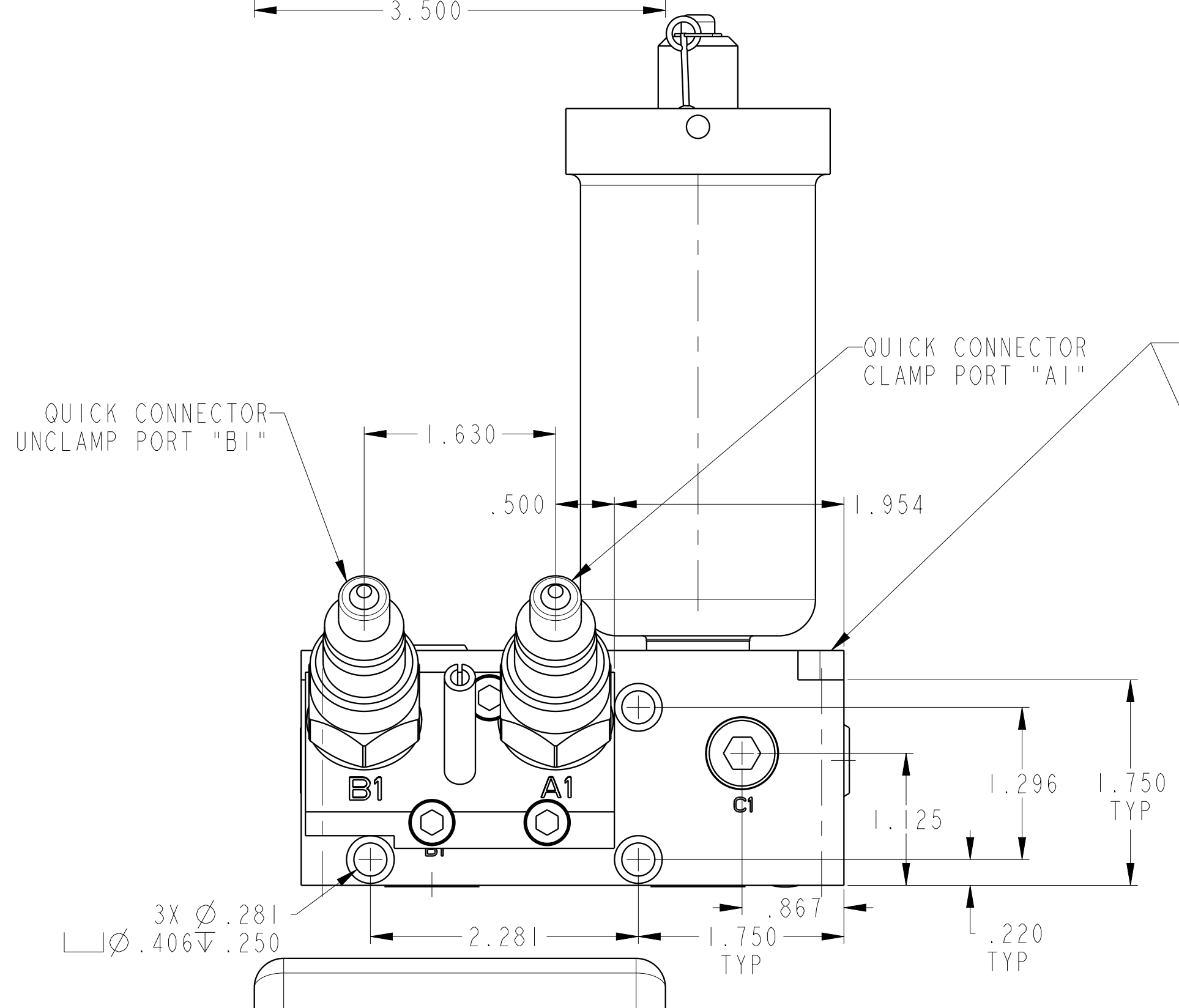
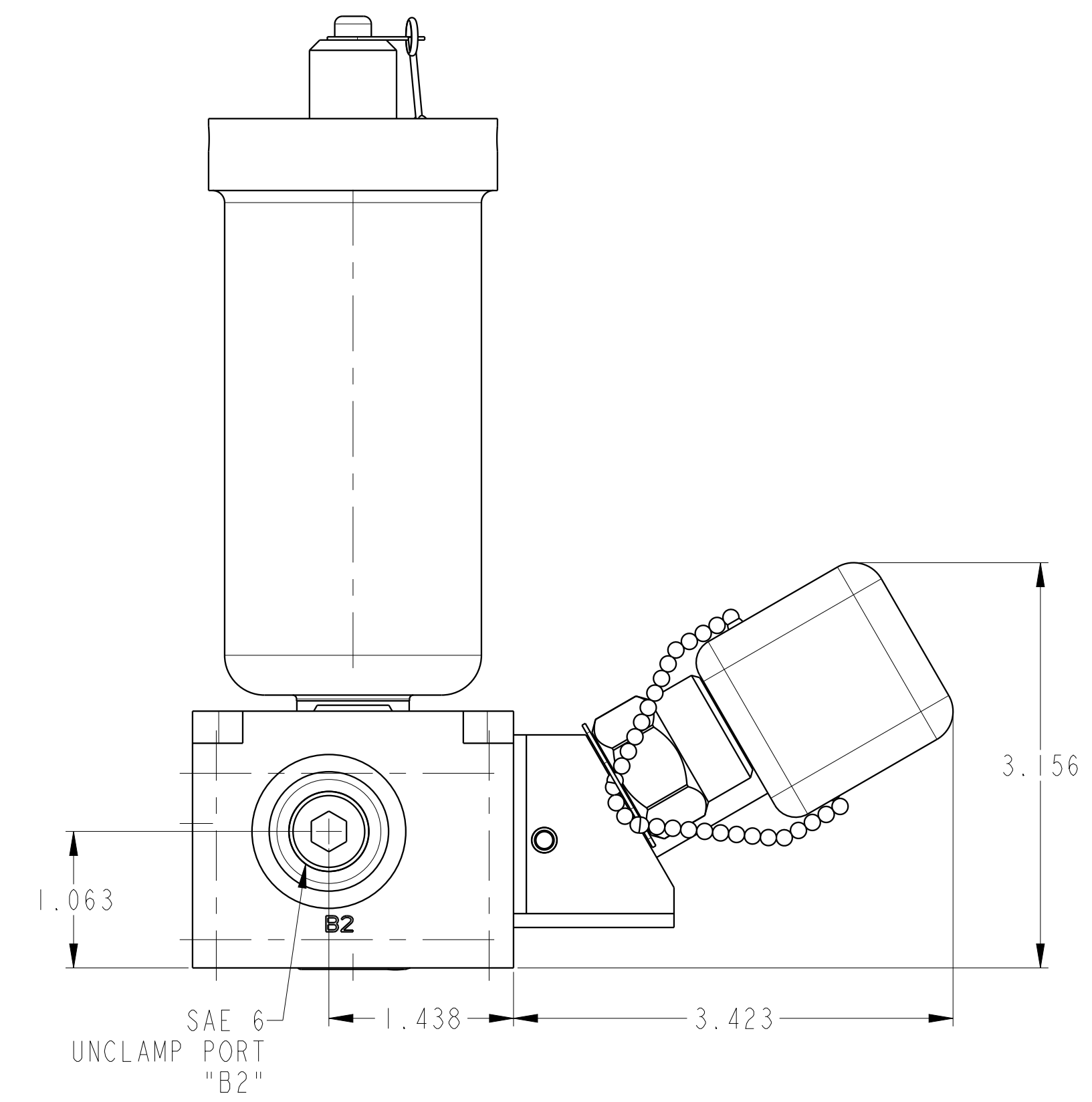


SCALE 0.500  
 ILC56000543 REV B ECN4131



<b>CAD CONTROL DRAWING</b>		<b>VEKTEK</b> VEKTEK, INC. 1334 E. SIXTH AVE. P.O. BOX 625 EMPORIA, KS. 66801 U.S.A.	

B	4131	RELEASE	NPETERS	3/17/20
REV	IN ACCORDANCE WITH ECN	EFFECTIVE DATE	REVISED BY	DATE
DRW BY:	DLG	<b>DRAWING STATUS: Released</b>		
DATE:	6/12/18	PRODUCTION APPROVED FOR RELEASED STATUS ONLY		

56000543	B	PD, 1H, DUAL, 1000, EXT ACC
TOLERANCES DO NOT APPLY DIMENSIONS ARE NOMINAL	SIZE D	ILC56000543 REV B