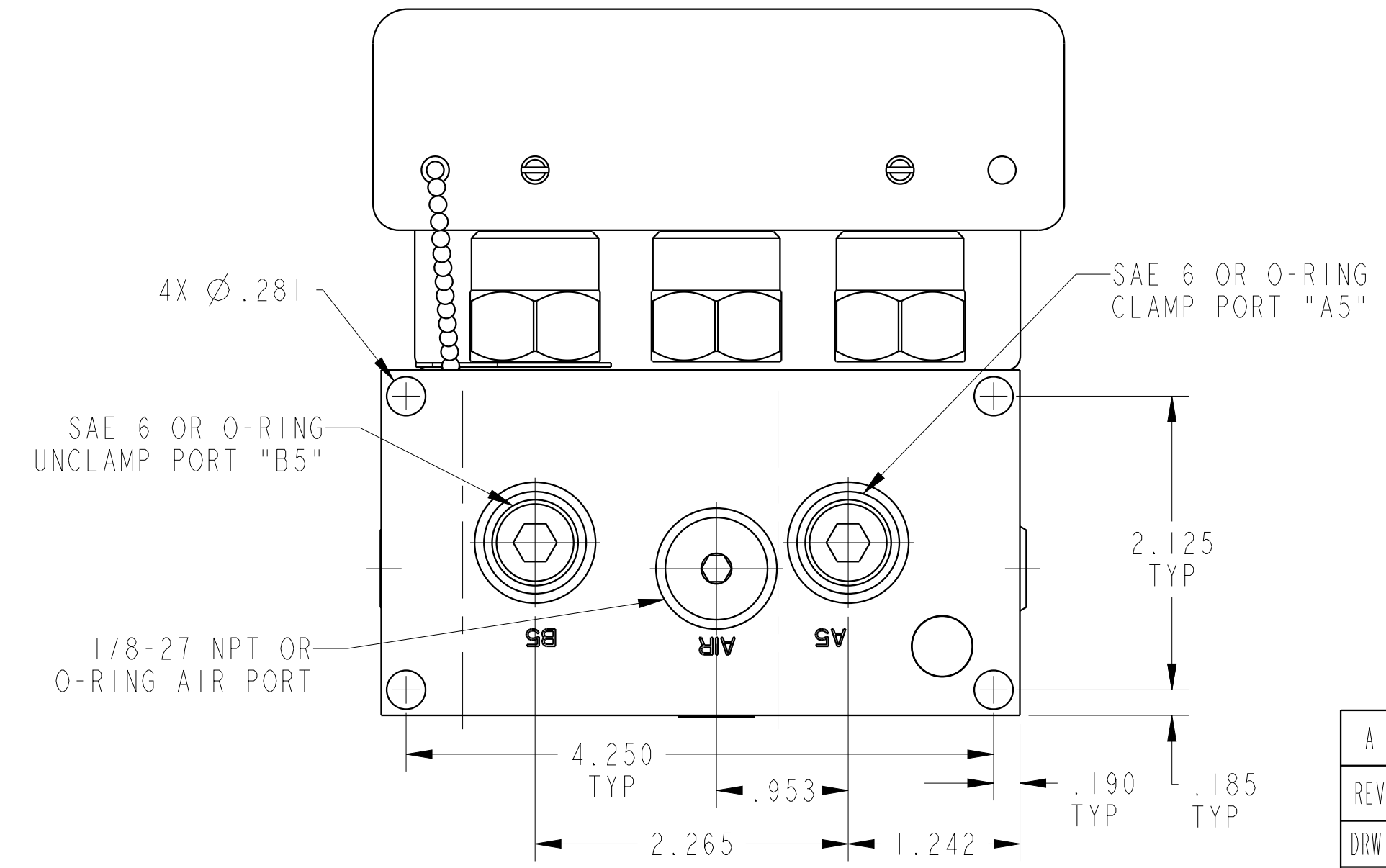
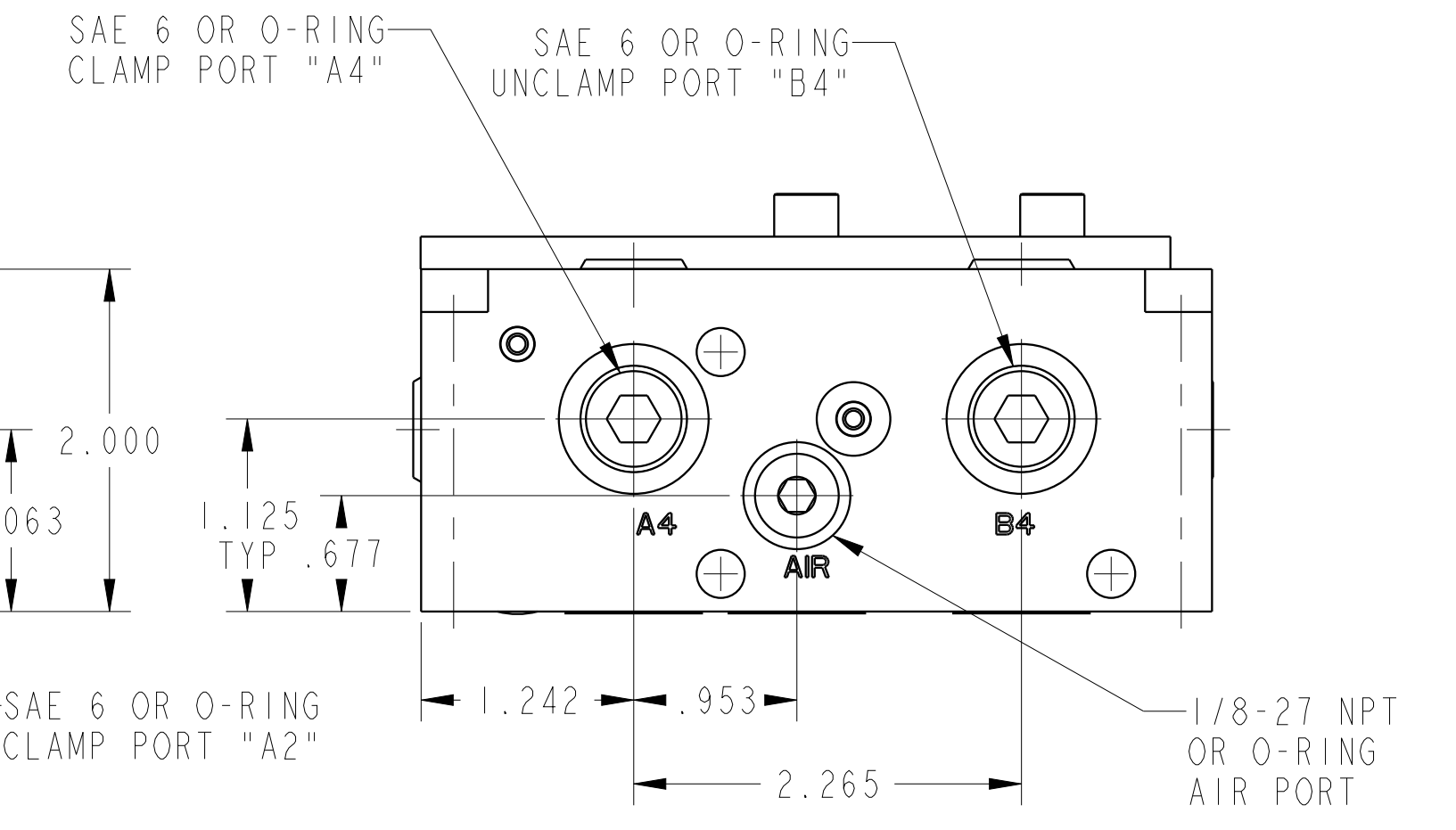
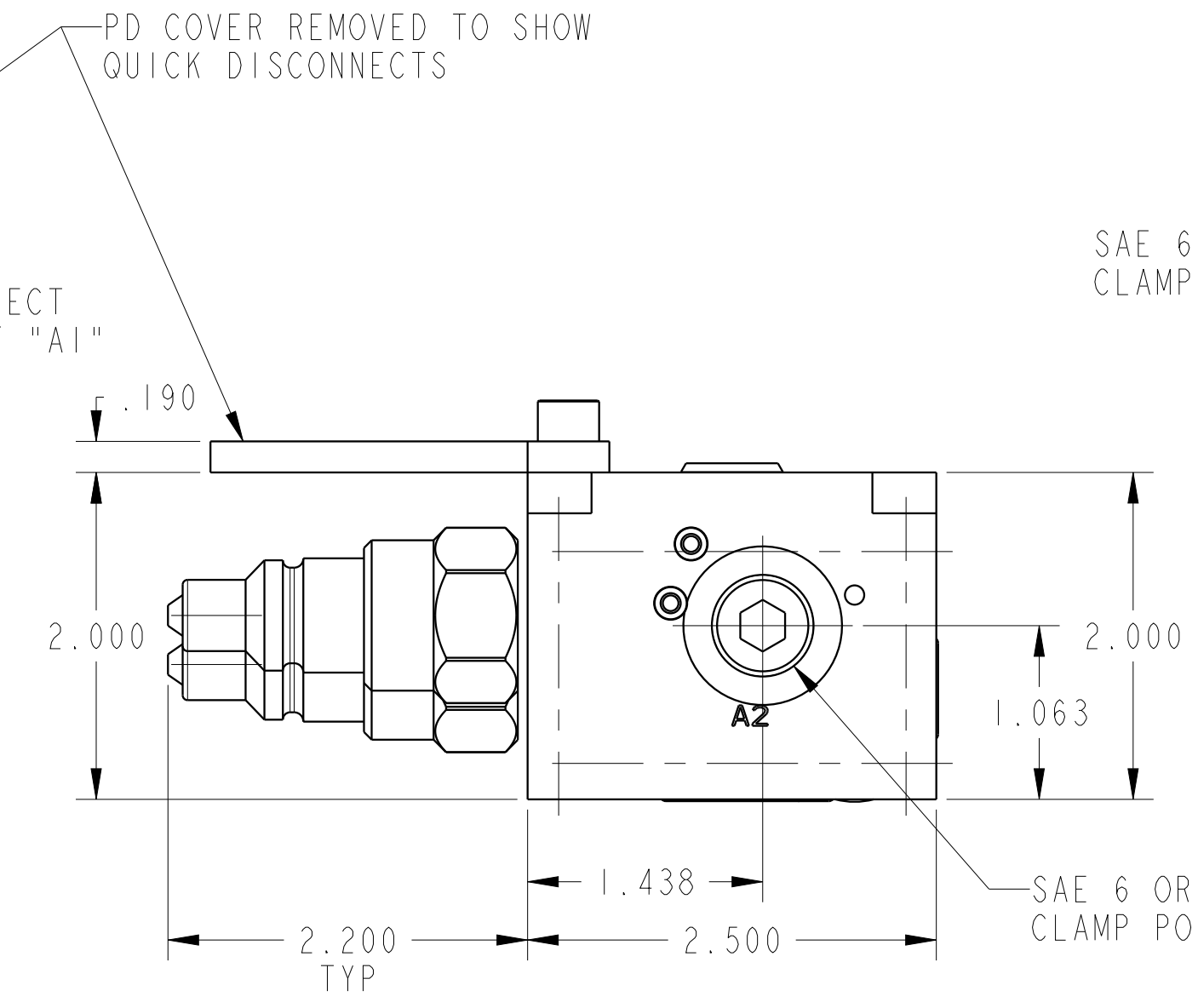
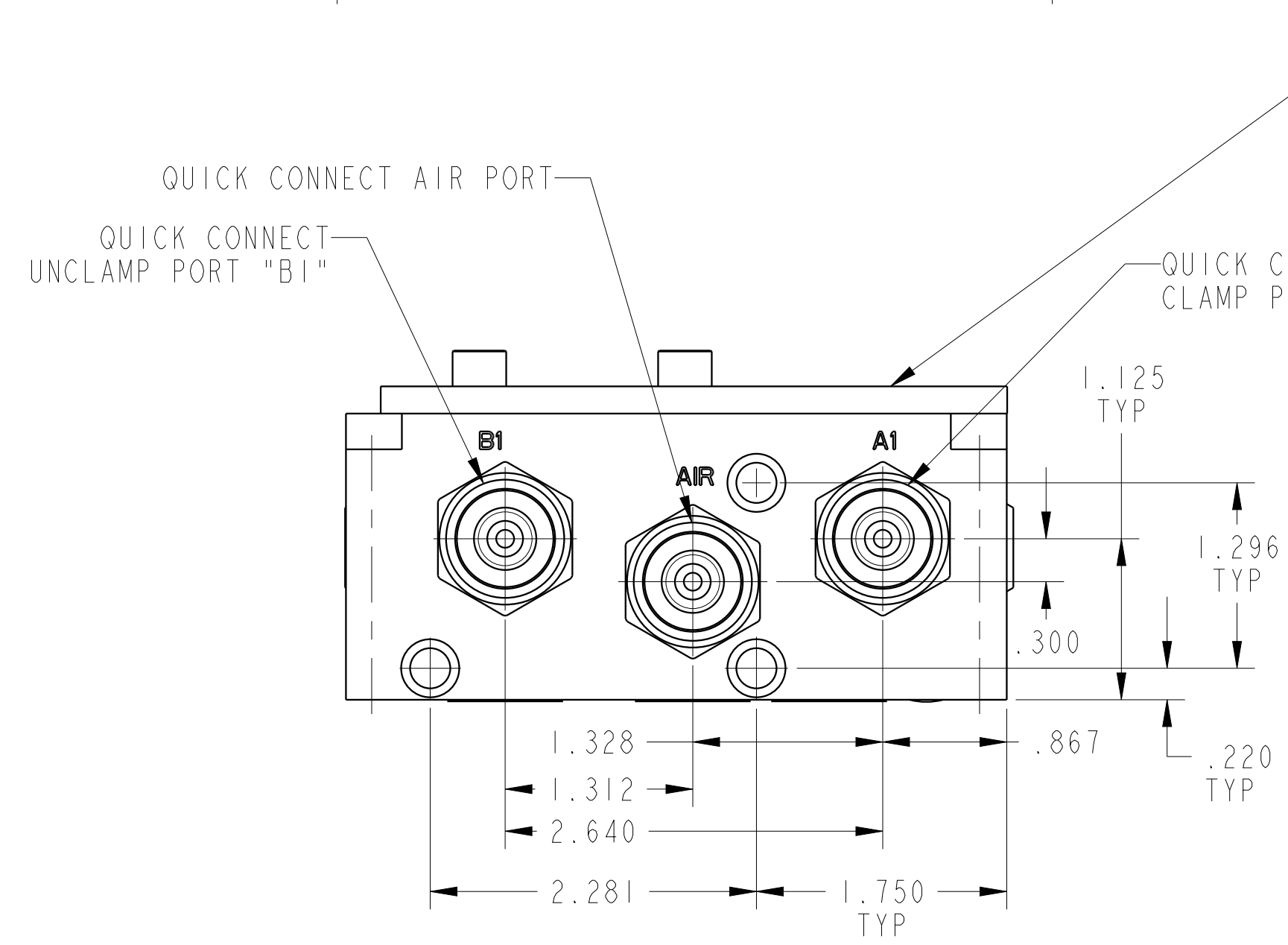
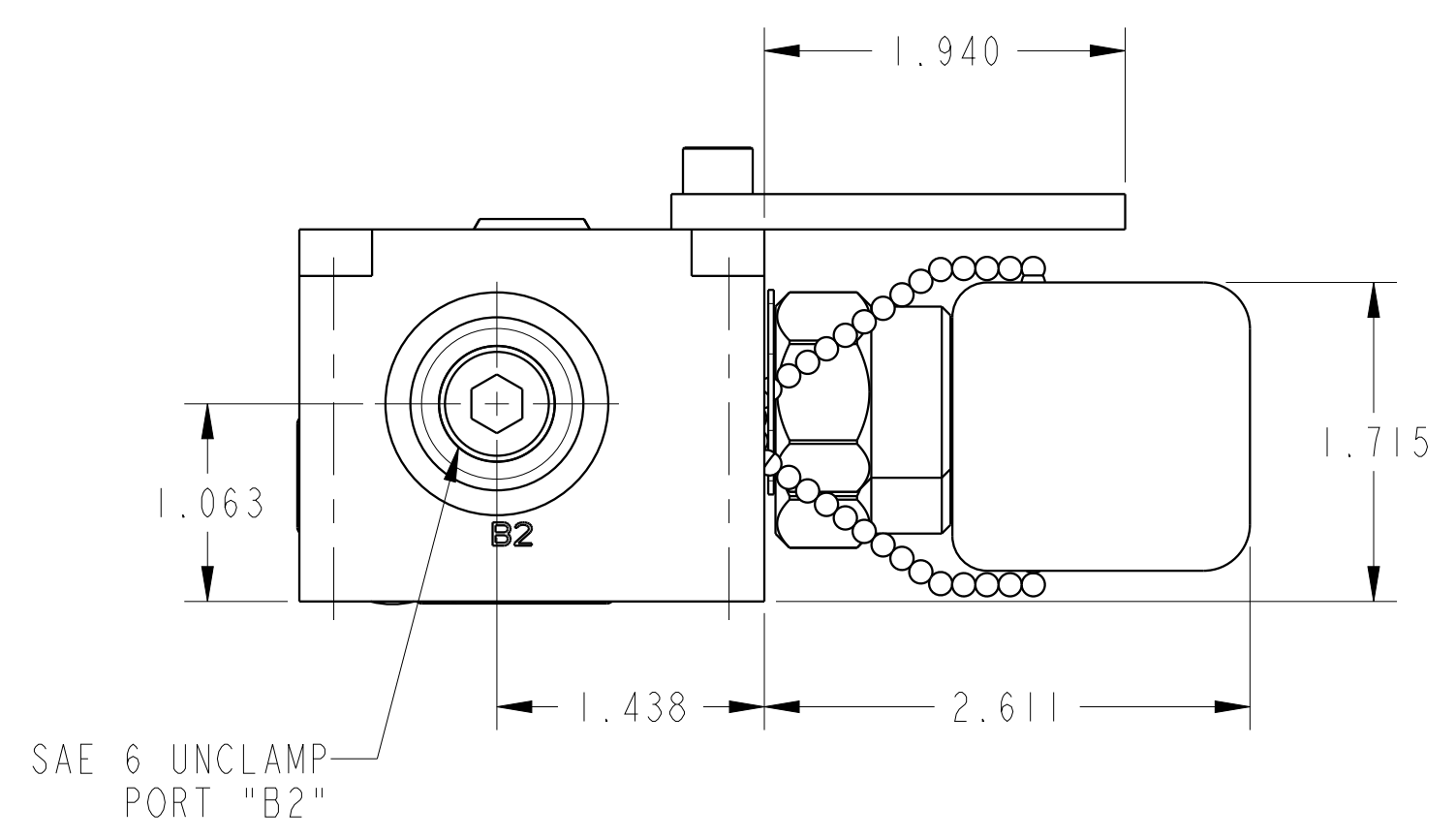


ILC56000544 REV A ECN 4352



CAD CONTROL DRAWING		
	VEKTEK, INC. 1334 E. SIXTH AVE. P.O. BOX 625 EMPORIA, KS. 66801 U.S.A.	

A	4352	RELEASE	ALS	10/6/20
REV	IN ACCORDANCE WITH ECN	EFFECTIVE DATE	REVISED BY	DATE
DRW BY:	ALS	DRAWING STATUS: Released		
DATE:	10/6/20	PRODUCTION APPROVED FOR RELEASED STATUS ONLY		

56000544	A	ASSY, PD, 2H, DUAL, PNEU
REFERENCE MODEL	REF REV	*****
TOLERANCES DO NOT APPLY		SIZE
DIMENSIONS ARE NOMINAL		D
ILC56000544		REV A
FORM FEG036, Rev. B		