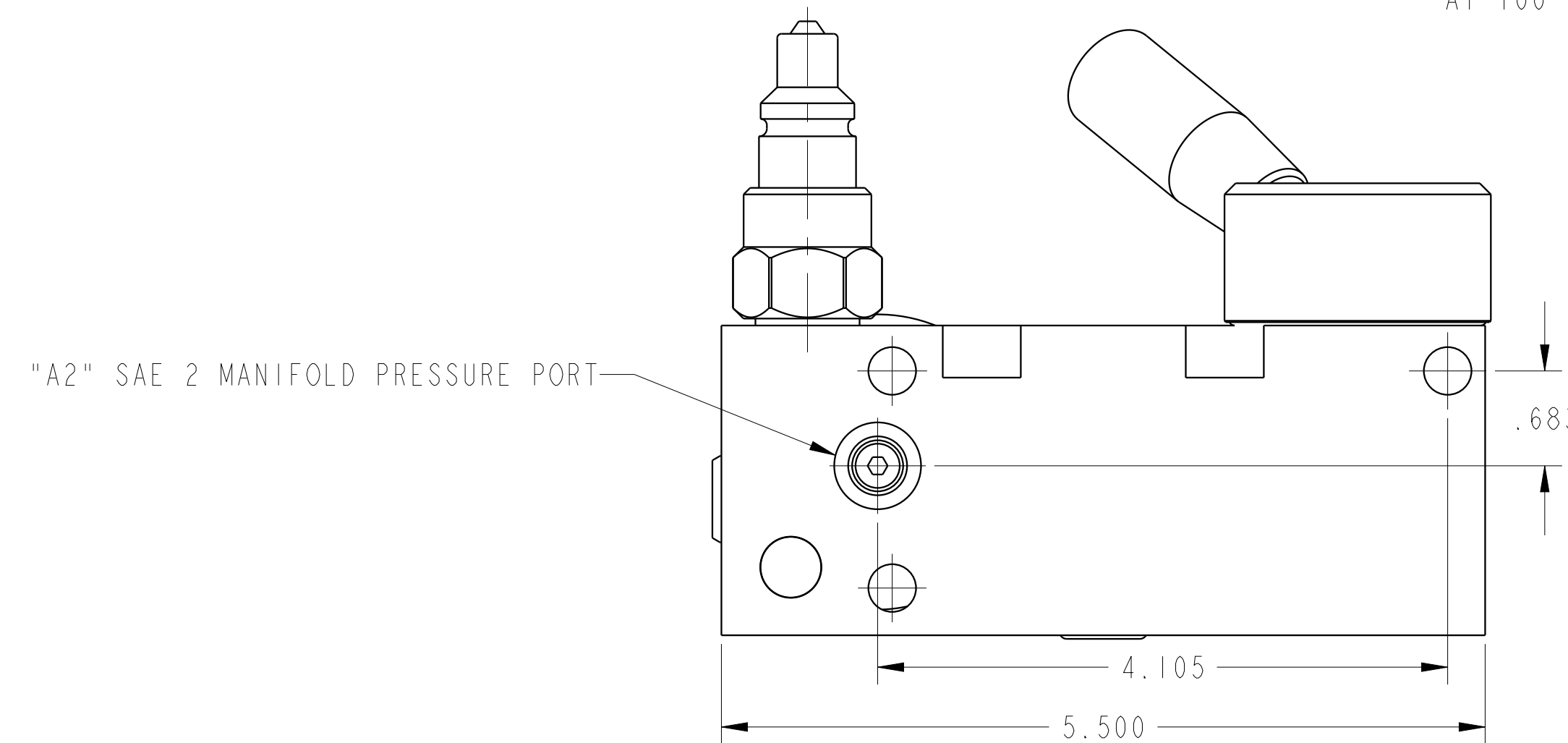
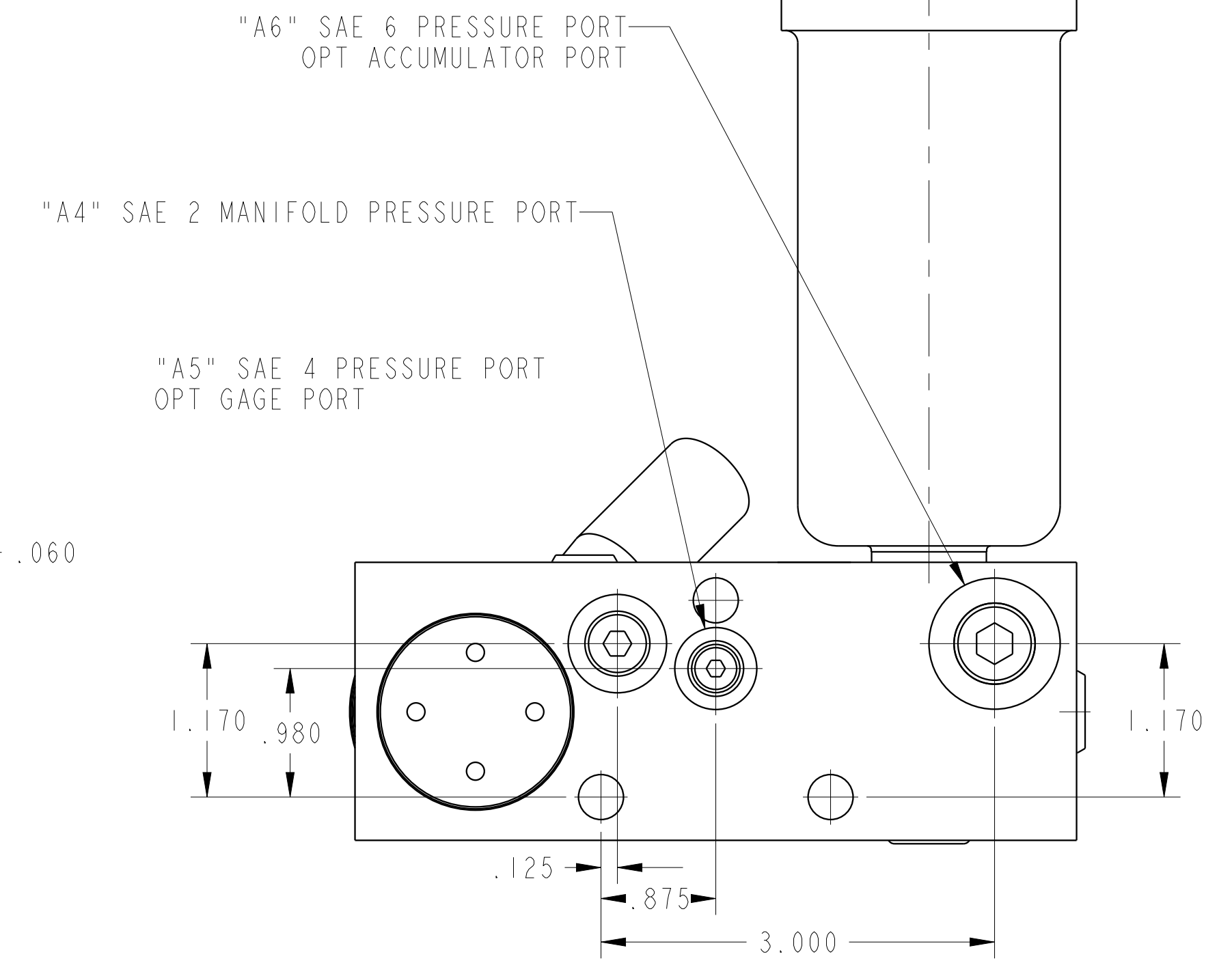
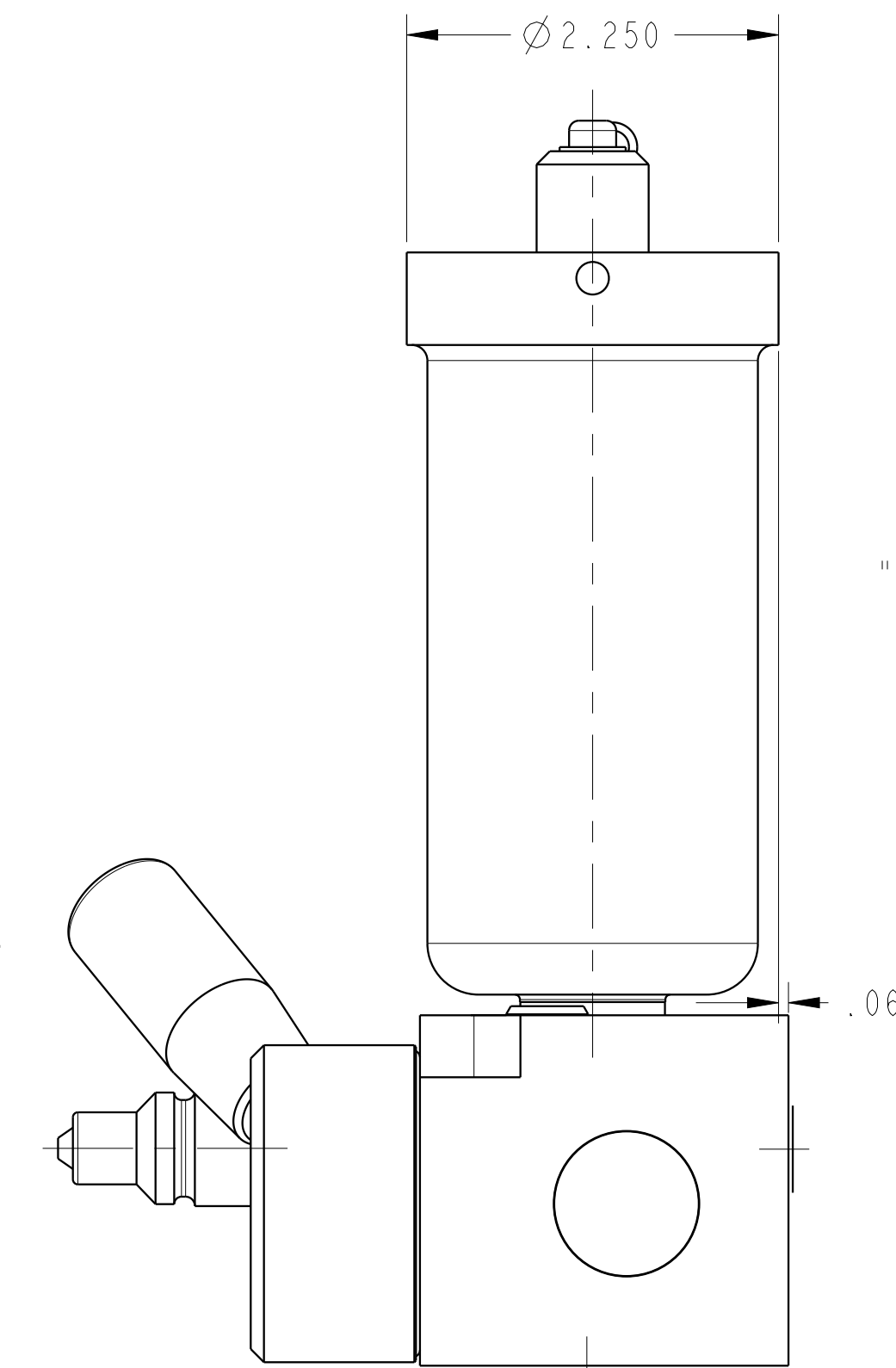
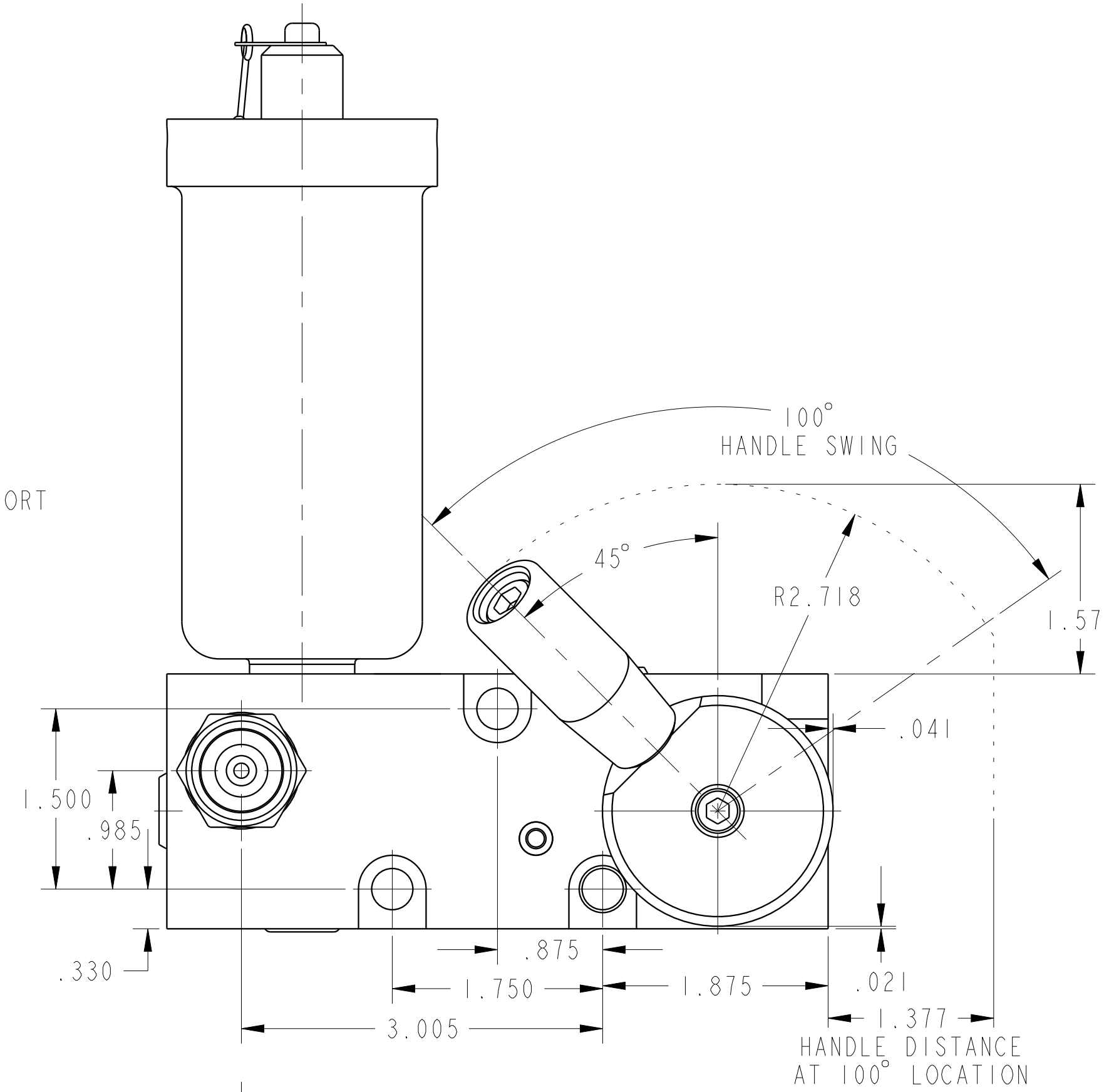
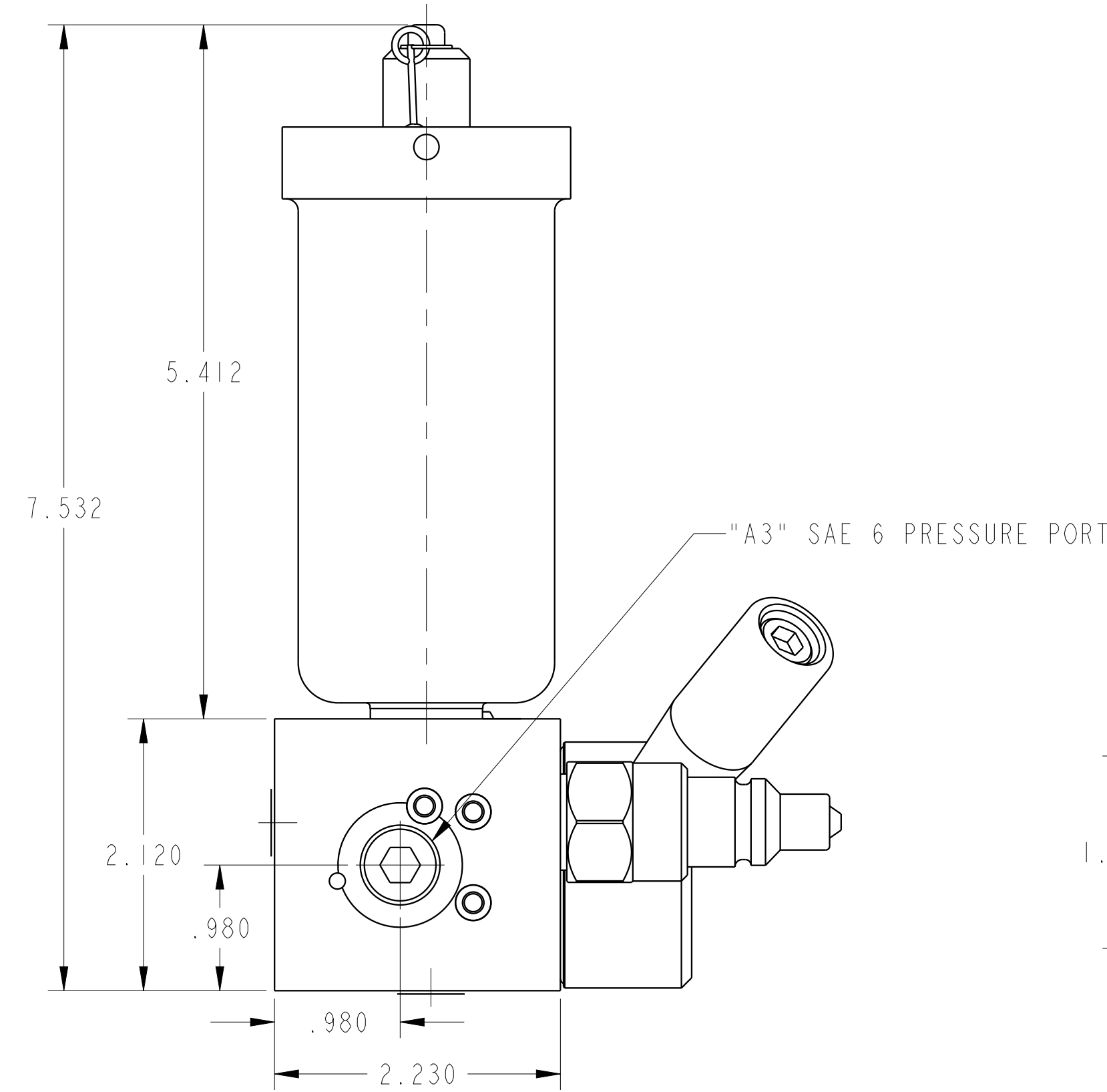
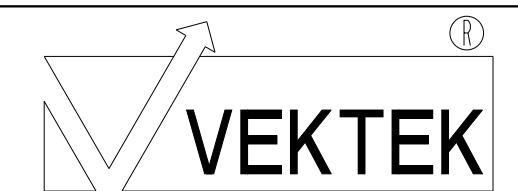


ILC56000606 REV B ECN 3968



CAD CONTROL
DRAWING



VEKTEK, INC.
1334 E. SIXTH AVE. P.O. BOX 625
EMPORIA, KS. 66801 U.S.A.

B	3968	RELEASE	MJUST	11/5/19
REV	IN ACCORDANCE WITH ECN	EFFECTIVE DATE	REVISED BY	DATE
DRW BY:	DRAWING STATUS: Released			
DATE:	PRODUCTION APPROVED FOR RELEASED STATUS ONLY			

56000606	C
REFERENCE MODEL	REF REV
TOLERANCES DO NOT APPLY DIMENSIONS ARE NOMINAL	

PD, AUTOSHUTOFF, SA, 3.2 ci	REV B
SIZE D	ILC56000606

FORM FEG036, Rev. B