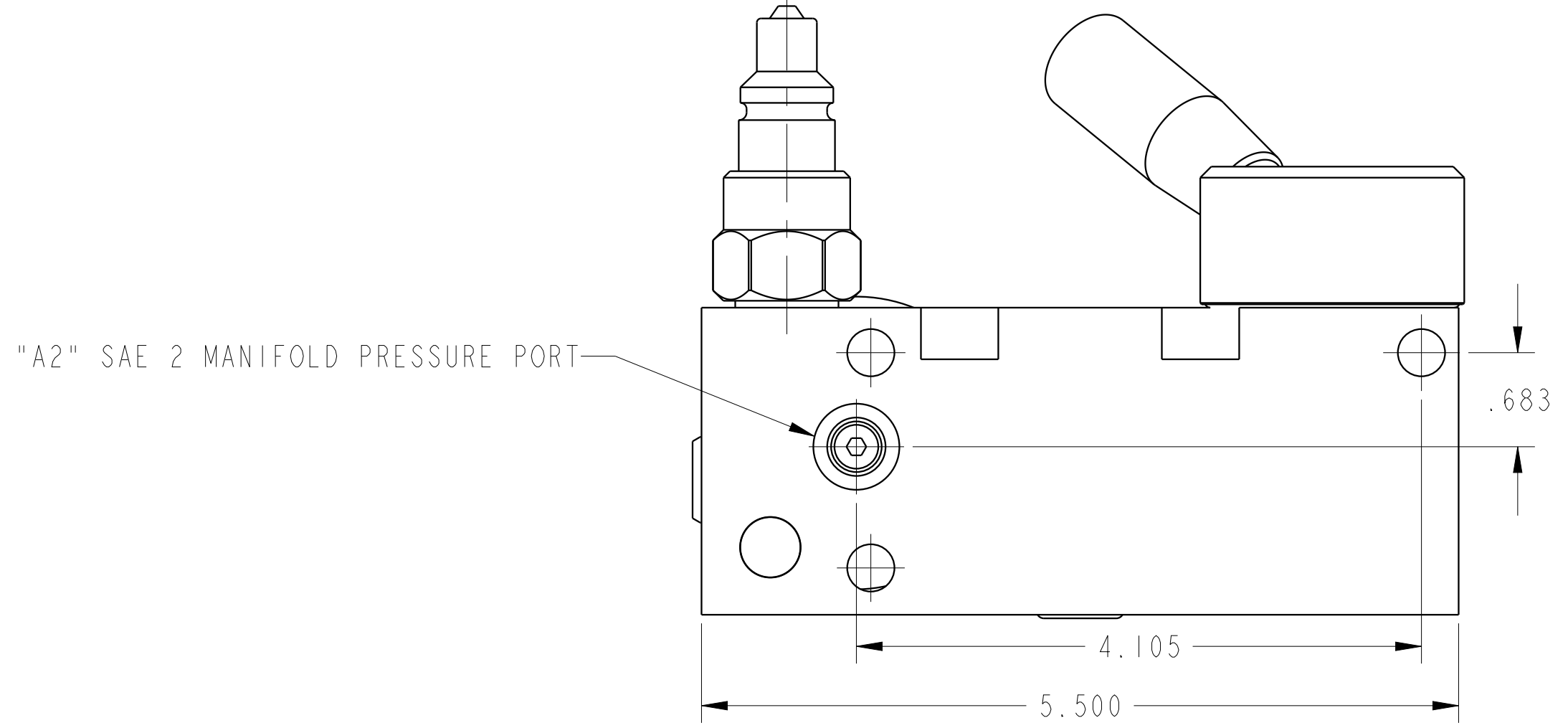
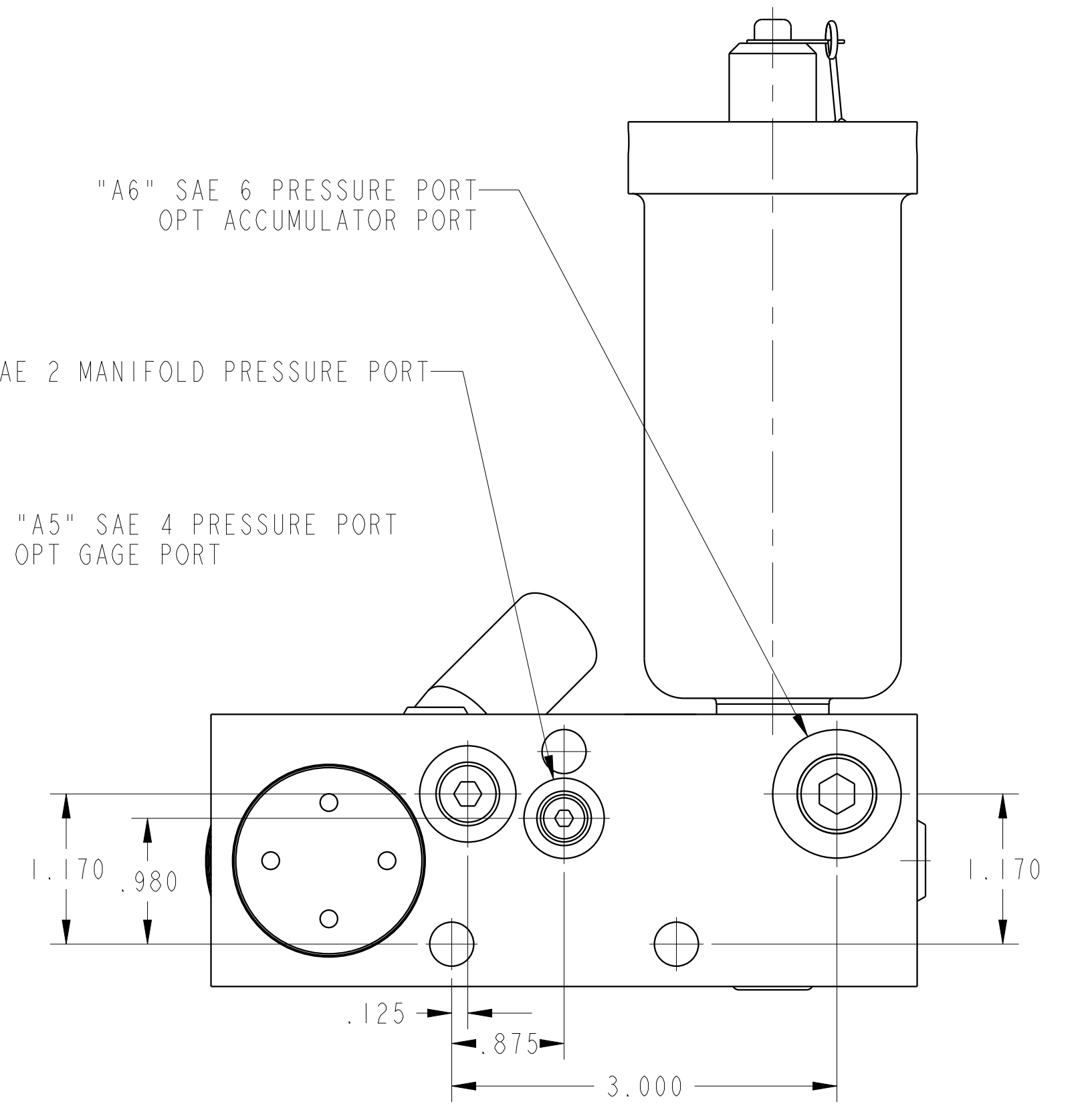
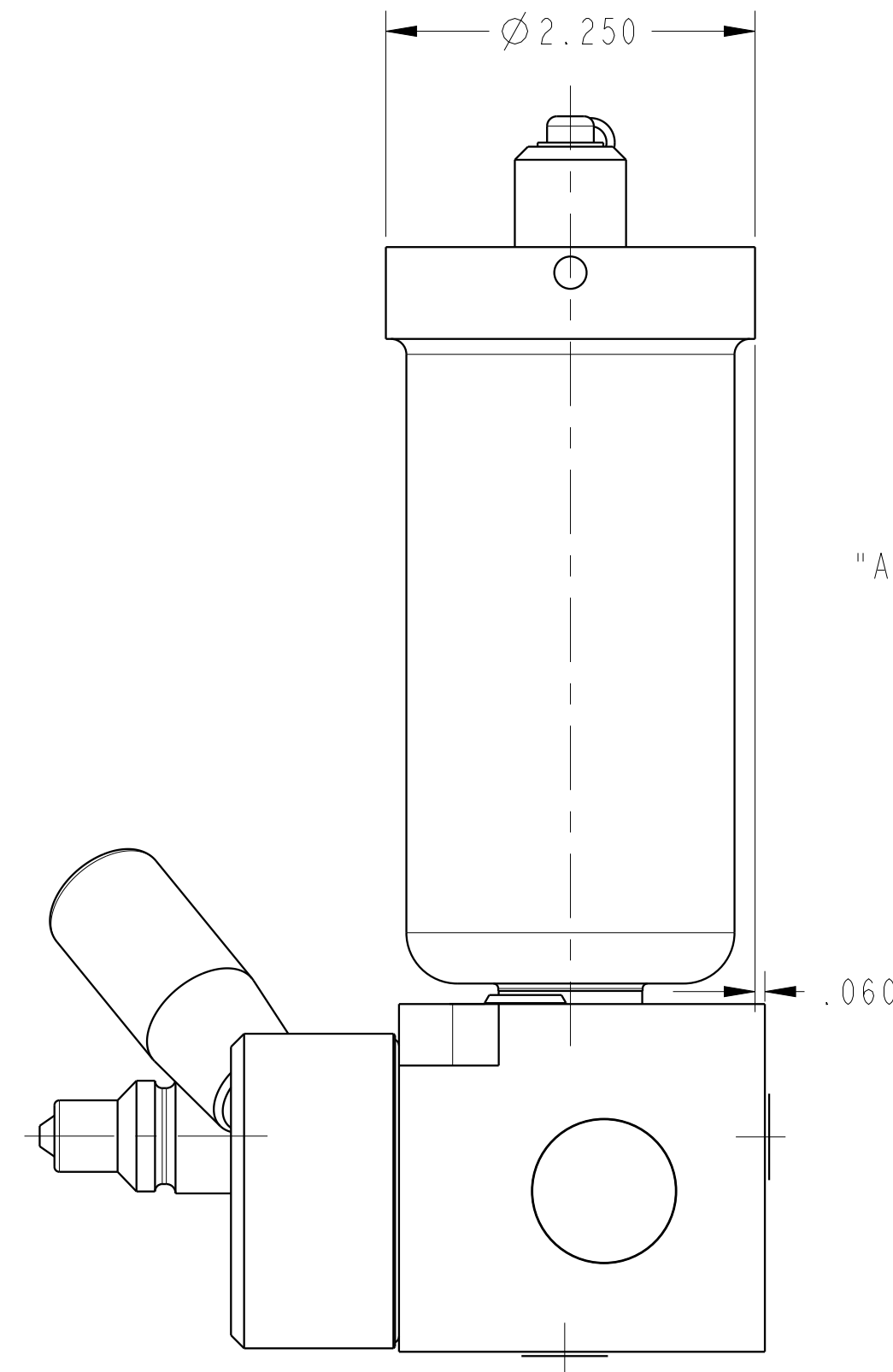
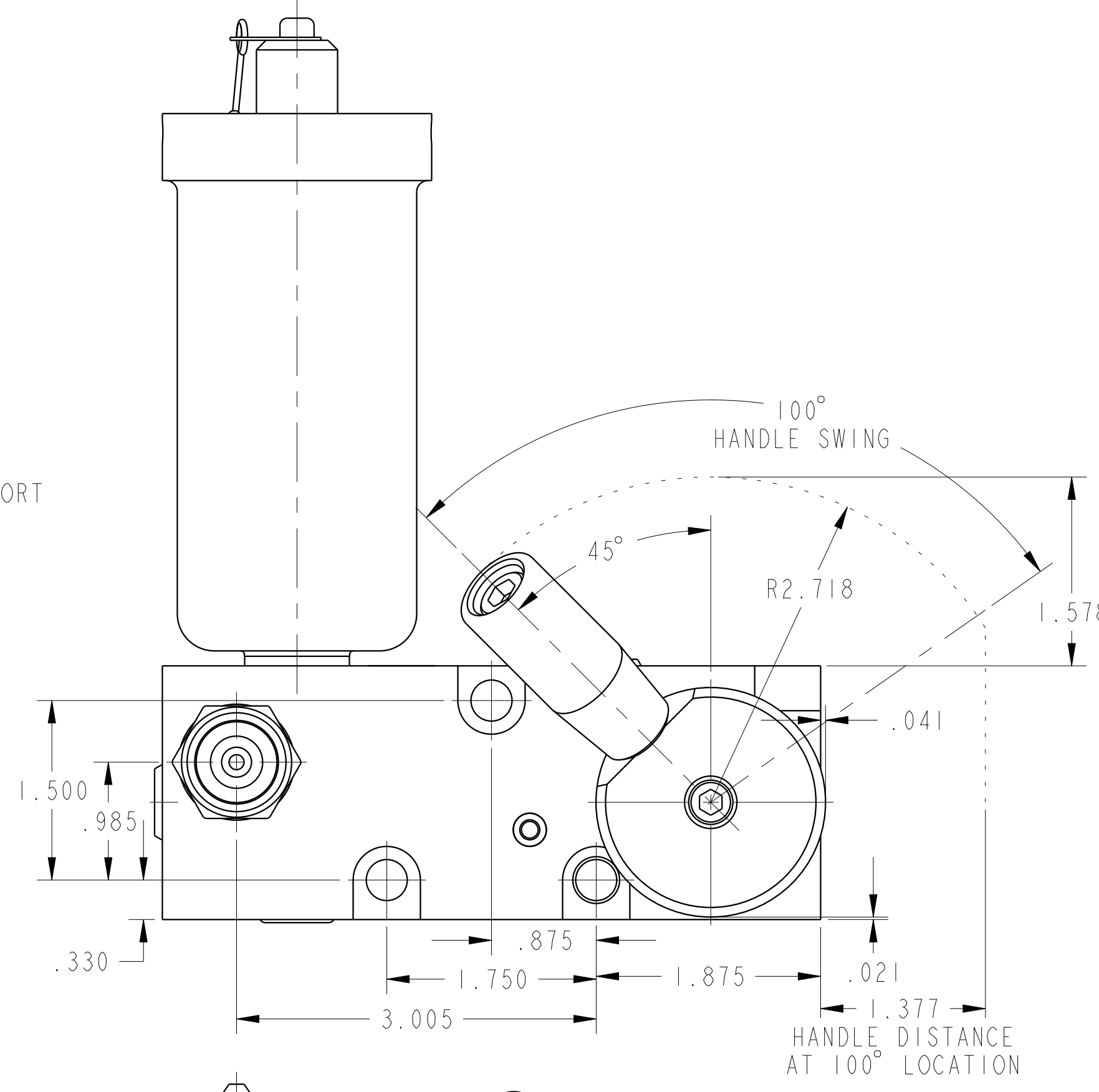
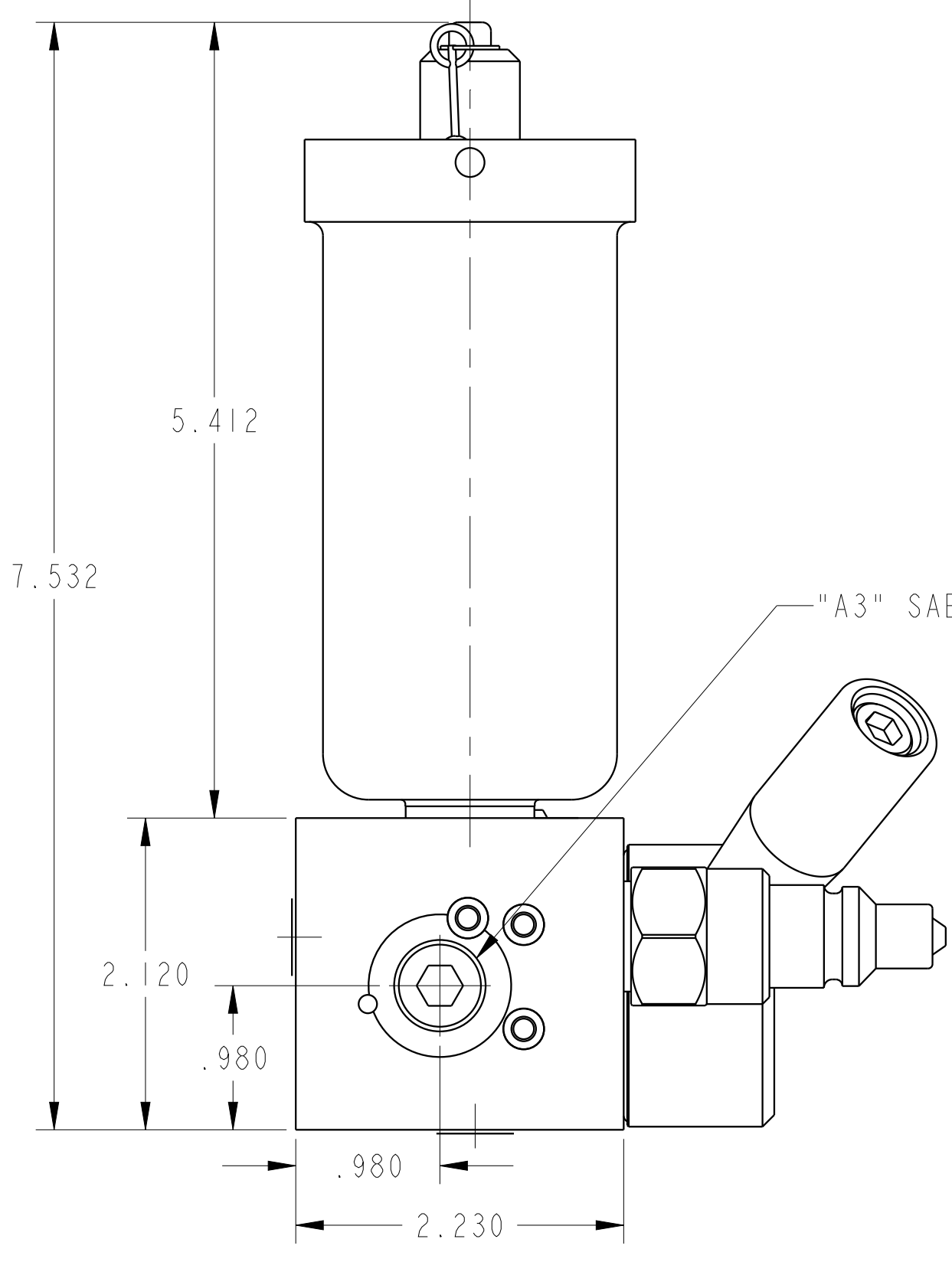


ILC56000607 REV B ECN 3968



CAD CONTROL DRAWING		
	VEKTEK, INC. 1334 E. SIXTH AVE. P.O. BOX 625 EMPORIA, KS. 66801 U.S.A.	

B	3968	RELEASE	MJUST	11/5/19	56000607	C	PD, AUTOSHUTOFF, SA, 3.6 c i
REV	IN ACCORDANCE WITH ECN	EFFECTIVE DATE	REVISED BY	DATE	REFERENCE MODEL	REF REV	*****
DRW BY:	DRAWING STATUS: Released			TOLERANCES DO NOT APPLY		SIZE	ILC56000607
DATE:	PRODUCTION APPROVED FOR RELEASED STATUS ONLY			DIMENSIONS ARE NOMINAL		D	