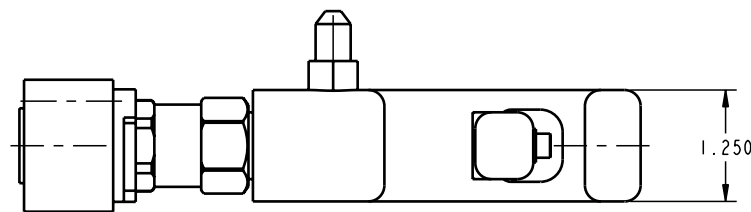
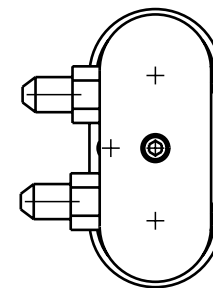
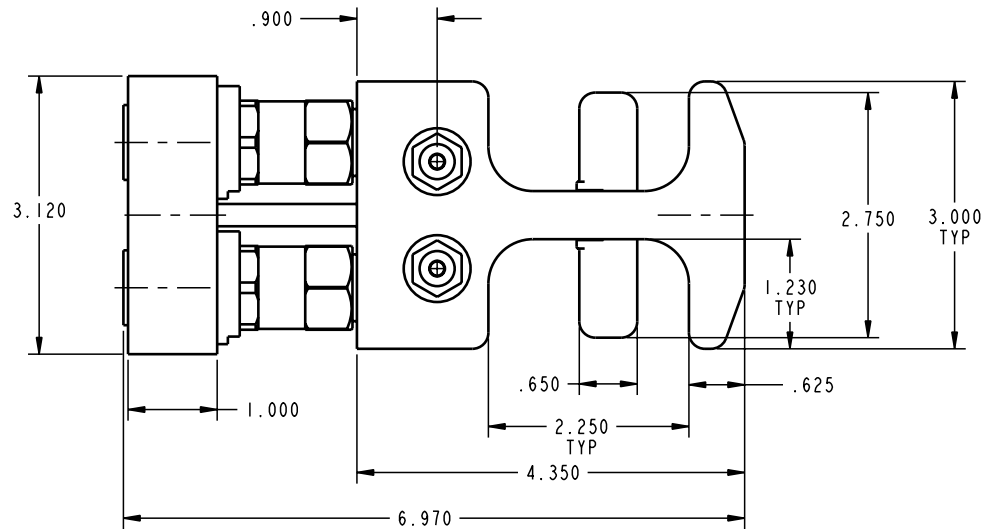
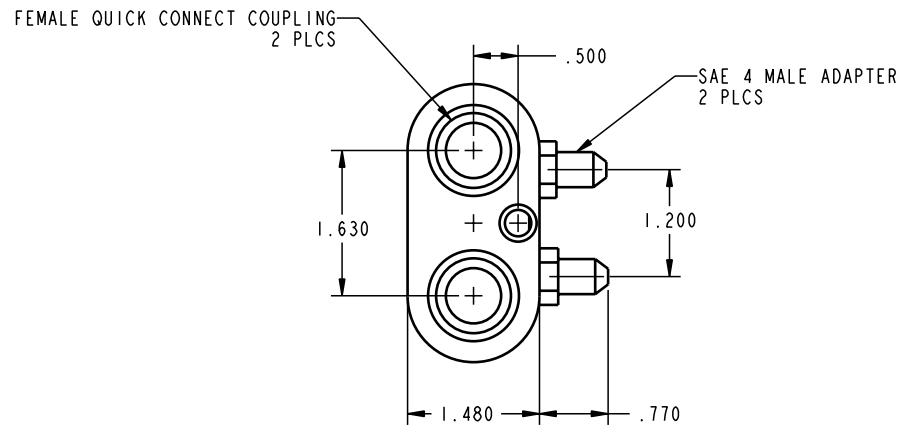


ILC56000800 REV A ECN 1243



CAD CONTROL  
DRAWING



VEKTEK, INC.  
1334 E. SIXTH AVE. P.O. BOX 625  
EMPORIA, KS. 66801 U.S.A.

REV	A	1243	RELEASE	K. ROEMER	02-04-05	56000800	C	HANDLE, PD, IH, DA
REV	IN ACCORDANCE WITH ECN		EFFECTIVE DATE	REVISED BY	DATE	REFERENCE MODEL	REF REV	
DRW BY:	K. ROEMER		DRAWING STATUS: <b>Released</b>			TOLERANCES DO NOT APPLY		SIZE
DATE:	02-04-05		PRODUCTION APPROVED FOR RELEASED STATUS ONLY			DIMENSIONS ARE NOMINAL		D ILC56000800

SIZE	D	REV	A
------	---	-----	---

FORM FEG036, Rev. A

SHEET 1 OF 1