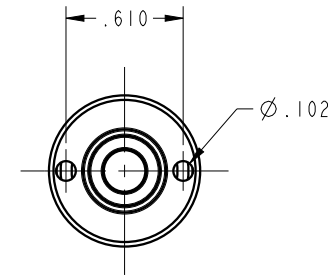
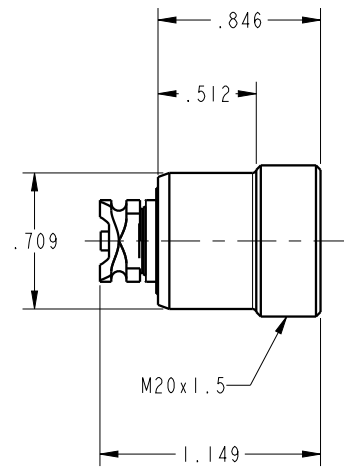


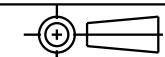
ILC56101300 REV A ECN3078



CAD CONTROL  
DRAWING



VEKTEK, INC.  
1334 E. SIXTH AVE. P.O. BOX 625  
EMPORIA, KS. 66801 U.S.A.



A	3078	RELEASE	TWA	8/24/16	56101300	A	COUPLING ELEMENT, SCREW, MECH, PRESS, M03
REV	IN ACCORDANCE WITH ECN	EFFECTIVE DATE	REVISED BY	DATE	REFERENCE MODEL	REF REV	*****
DRW BY:	TWA	DRAWING STATUS: <b>Released</b>			TOLERANCES DO NOT APPLY DIMENSIONS ARE NOMINAL		SIZE B
DATE:	7/28/16	PRODUCTION APPROVED FOR RELEASED STATUS ONLY			ILC56101300		REV A

FORM FEG036, Rev. B

SHEET 1 OF 1