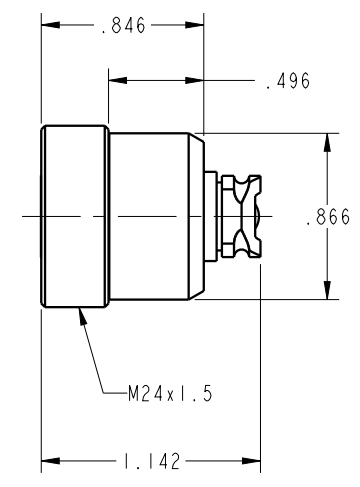
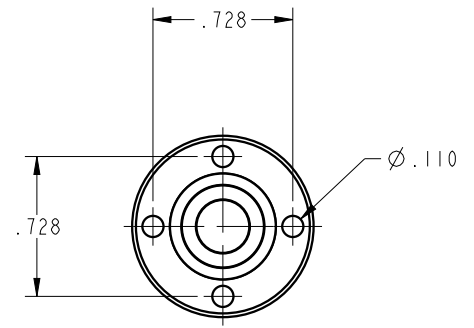


ILC56101500 REV A ECN3078



	<b>CAD CONTROL DRAWING</b>	 <small>VEKTEK, INC. 1334 E. SIXTH AVE. P.O. BOX 625 EMPORIA, KS. 66801 U.S.A.</small>

A	3078	RELEASE	TWA	8/24/16	56101500	A	COUPLING ELEMENT, SCREW, MECH, PRESS, MDS
REV	IN ACCORDANCE WITH ECN	EFFECTIVE DATE	REVISED BY	DATE	REFERENCE MODEL	REF REV	*****
DRW BY:	TWA	<b>DRAWING STATUS: Released</b> PRODUCTION APPROVED FOR RELEASED STATUS ONLY			TOLERANCES DO NOT APPLY DIMENSIONS ARE NOMINAL		SIZE
DATE:	7/27/16						B

FORM FEG036, Rev. B