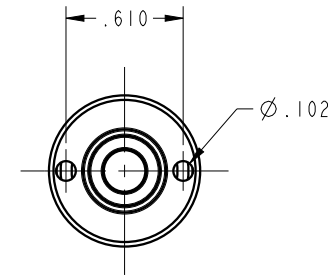
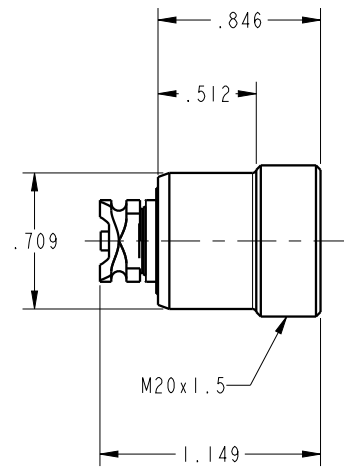
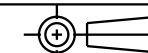


ILC56102300 REV A ECN3078



**CAD CONTROL
DRAWING**



VEKTEK, INC.
1334 E. SIXTH AVE. P.O. BOX 625
EMPORIA, KS. 66801 U.S.A.

A	3078	RELEASE	TWA	8/24/16	56102300	A	COUPLING ELEMENT, SCREW, MECH, DEPRESS, ND3
REV	IN ACCORDANCE WITH ECN	EFFECTIVE DATE	REVISED BY	DATE	REFERENCE MODEL	REF REV	*****
DRW BY:	TWA	DRAWING STATUS: Released			TOLERANCES DO NOT APPLY DIMENSIONS ARE NOMINAL		SIZE B
DATE:	7/28/16	PRODUCTION APPROVED FOR RELEASED STATUS ONLY			ILC56102300		REV A

FORM FEG036, Rev. B

SHEET 1 OF 1