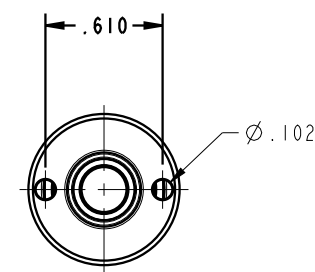
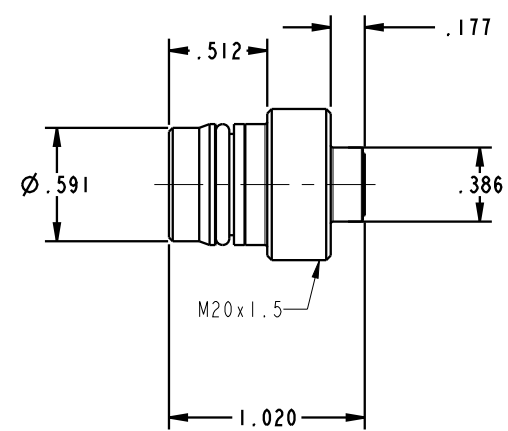


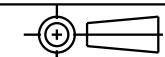
ILC56111300 REV B ECN3216



CAD CONTROL
DRAWING



VEKTEK, INC.
1334 E. SIXTH AVE. P.O. BOX 625
EMPORIA, KS. 66801 U.S.A.



B	3216	RELEASE	MAJ	5/30/17	56111300	A	COUPLING ELEMENT, SCREW, NIPPLE, PRESS, NDS
REV	IN ACCORDANCE WITH ECN	EFFECTIVE DATE	REVISED BY	DATE	REFERENCE MODEL	REF REV	*****
DRW BY:	TWA	DRAWING STATUS: Released			TOLERANCES DO NOT APPLY DIMENSIONS ARE NOMINAL		SIZE B
DATE:	7/28/16	PRODUCTION APPROVED FOR RELEASED STATUS ONLY			ILC56111300		REV B

FORM FEG036, Rev. B

SHEET 1 OF 1