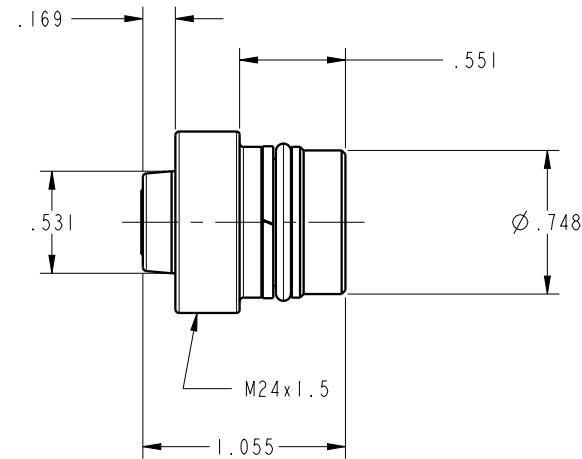
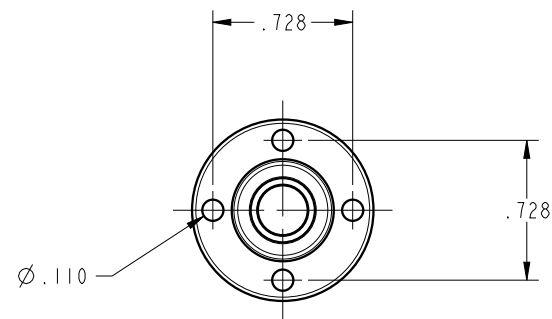


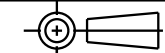
ILC56111500 REV A ECN3078



**CAD CONTROL  
DRAWING**



VEKTEK, INC.  
1334 E. SIXTH AVE. P.O. BOX 625  
EMPORIA, KS. 66801 U.S.A.



A	3078	RELEASE	TWA	8/24/16	56111500	A	COUPLING ELEMENT, SCREW, NIPPLE, PRESS, NDS
REV	IN ACCORDANCE WITH ECN	EFFECTIVE DATE	REVISED BY	DATE	REFERENCE MODEL	REF REV	*****
DRW BY:	TWA	<b>DRAWING STATUS: Released</b>			TOLERANCES DO NOT APPLY DIMENSIONS ARE NOMINAL		SIZE B
DATE:	7/27/16	PRODUCTION APPROVED FOR RELEASED STATUS ONLY			ILC56111500		REV A

FORM FE036, Rev. B