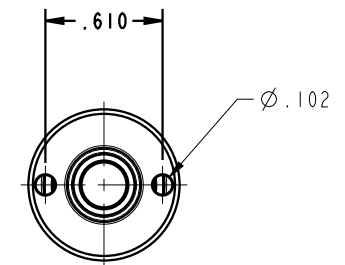
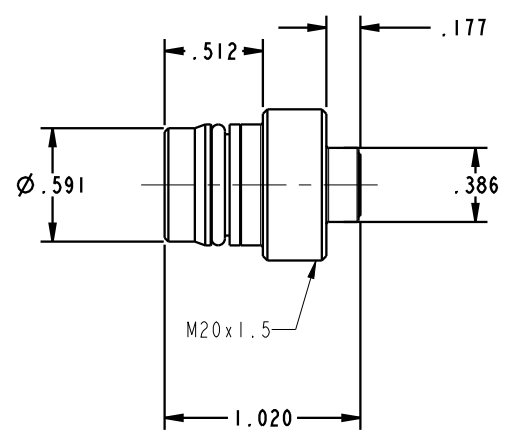
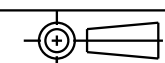


ILC56112300 REV B ECN3216



**CAD CONTROL  
DRAWING**



VEKTEK, INC.  
1334 E. SIXTH AVE. P.O. BOX 625  
EMPORIA, KS. 66801 U.S.A.

B	3216	RELEASE	MAJ	5/30/17	56112300	A	COUPLING ELEMENT, SCREW, NIPPLE, DEPRESS, HD3
REV	IN ACCORDANCE WITH ECN	EFFECTIVE DATE	REVISED BY	DATE	REFERENCE MODEL	REF REV	*****
DRW BY:	TWA	<b>DRAWING STATUS: Released</b>			TOLERANCES DO NOT APPLY DIMENSIONS ARE NOMINAL		SIZE B
DATE:	7/28/16	PRODUCTION APPROVED FOR RELEASED STATUS ONLY			ILC56112300		REV B

FORM FEG036, Rev. B

SHEET 1 OF 1