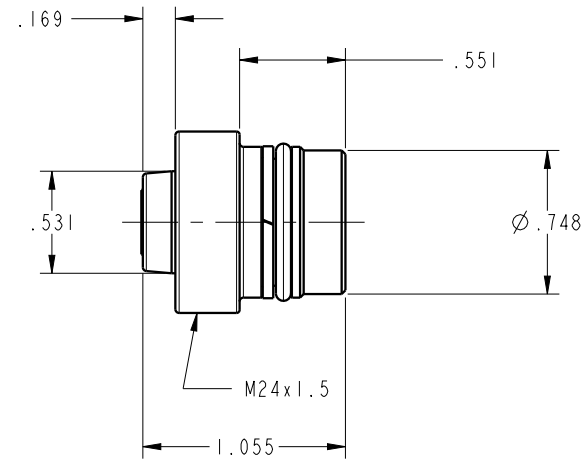
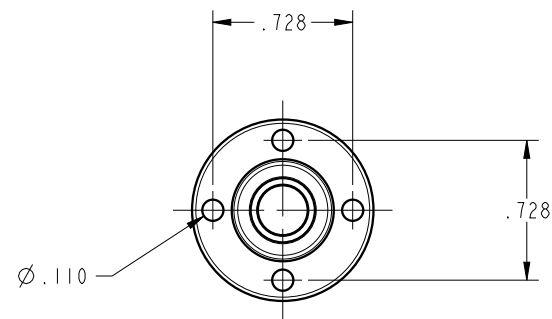


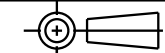
ILC56112500 REV A ECN3078



CAD CONTROL
DRAWING



VEKTEK, INC.
1334 E. SIXTH AVE. P.O. BOX 625
EMPORIA, KS. 66801 U.S.A.



A	3078	RELEASE	TWA	8/24/16	56112500	A	COUPLING ELEMENT, SCREW, NIPPLE, DEPRESS, MDS
REV	IN ACCORDANCE WITH ECN	EFFECTIVE DATE	REVISED BY	DATE	REFERENCE MODEL	REF REV	*****
DRW BY:	TWA	DRAWING STATUS: Released			TOLERANCES DO NOT APPLY DIMENSIONS ARE NOMINAL		SIZE B
DATE:	7/27/16	PRODUCTION APPROVED FOR RELEASED STATUS ONLY			FORM FEG036, Rev. B		ILC56112500 REV A

SHEET 1 OF 1