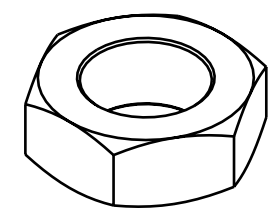
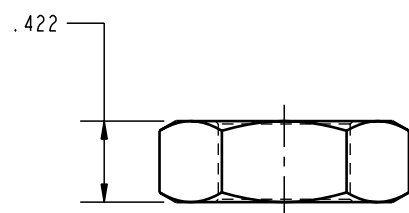


1.125

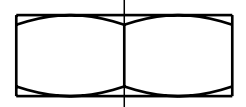
3/4-16 UNF



ILC64000700 REV A ECN 718



.422



CAD CONTROL DRAWING		
	VEKTEK, INC. 1334 E. SIXTH AVE. P.O. BOX 625 EMPORIA, KS. 66801 U.S.A.	

A	718	RELEASE	K. ROEMER	06-13-05	64000700	C	NUT, LOCK, 3/4-16
REV	IN ACCORDANCE WITH ECN	EFFECTIVE DATE	REVISED BY	DATE	REFERENCE MODEL	REF REV	
DRW BY:	K. ROEMER	DRAWING STATUS: Released			TOLERANCES DO NOT APPLY DIMENSIONS ARE NOMINAL		SIZE B
DATE:	09-09-02	PRODUCTION APPROVED FOR RELEASED STATUS ONLY					ILC64000700 REV A
							FORM FEG036, Rev. A

SHEET 1 OF 1