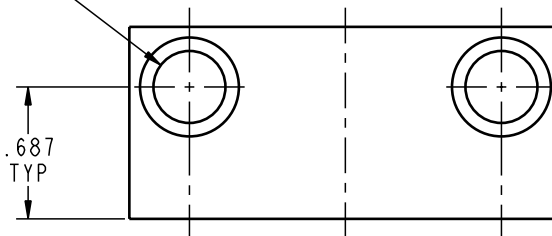
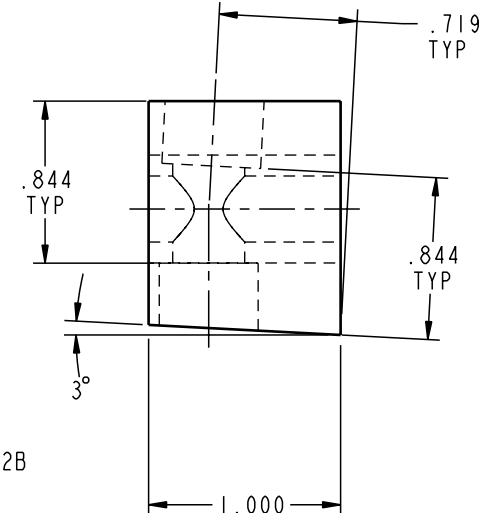
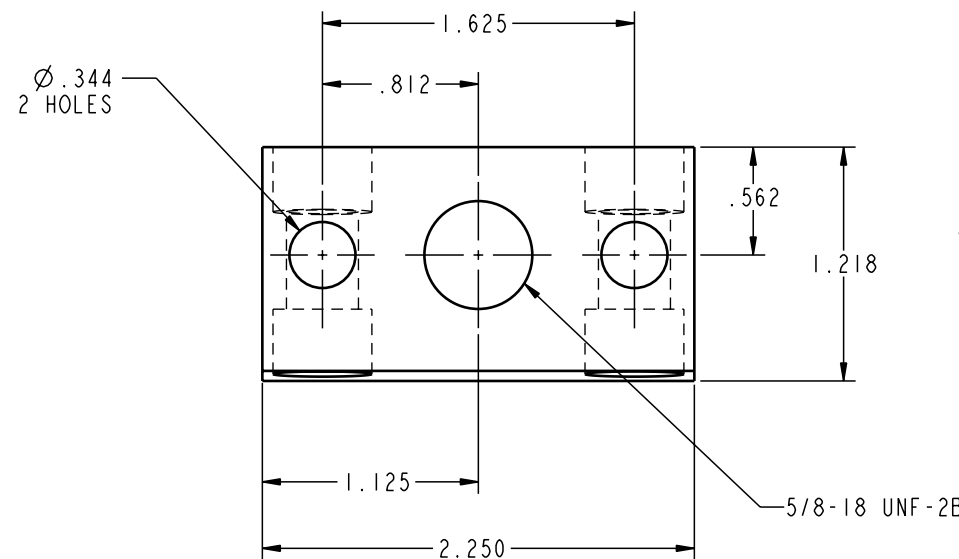
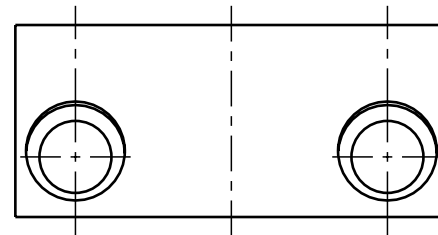


ILC64030600 REV A ECN 715

∅.375 THRU -2 PLCS
 L∅.515 TO DEPTH SHOWN -4 PLCS



CAD CONTROL
 DRAWING



VEKTEK, INC.
 1334 E. SIXTH AVE. P.O. BOX 625
 EMPORIA, KS. 66801 U.S.A.

A	715	RELEASE	K. ROEMER	06-13-05	64030600	B	BLOCK, MOUNTING, 5/8-18
REV	IN ACCORDANCE WITH ECN	EFFECTIVE DATE	REVISED BY	DATE	REFERENCE MODEL	REF REV	
DRW BY:	K. ROEMER	DRAWING STATUS: Released				TOLERANCES DO NOT APPLY	SIZE
DATE:	08/28/02	PRODUCTION APPROVED FOR RELEASED STATUS ONLY				DIMENSIONS ARE NOMINAL	B



ILC64030600 REV A

FORM FEG036, Rev. A

SHEET 1 OF 1