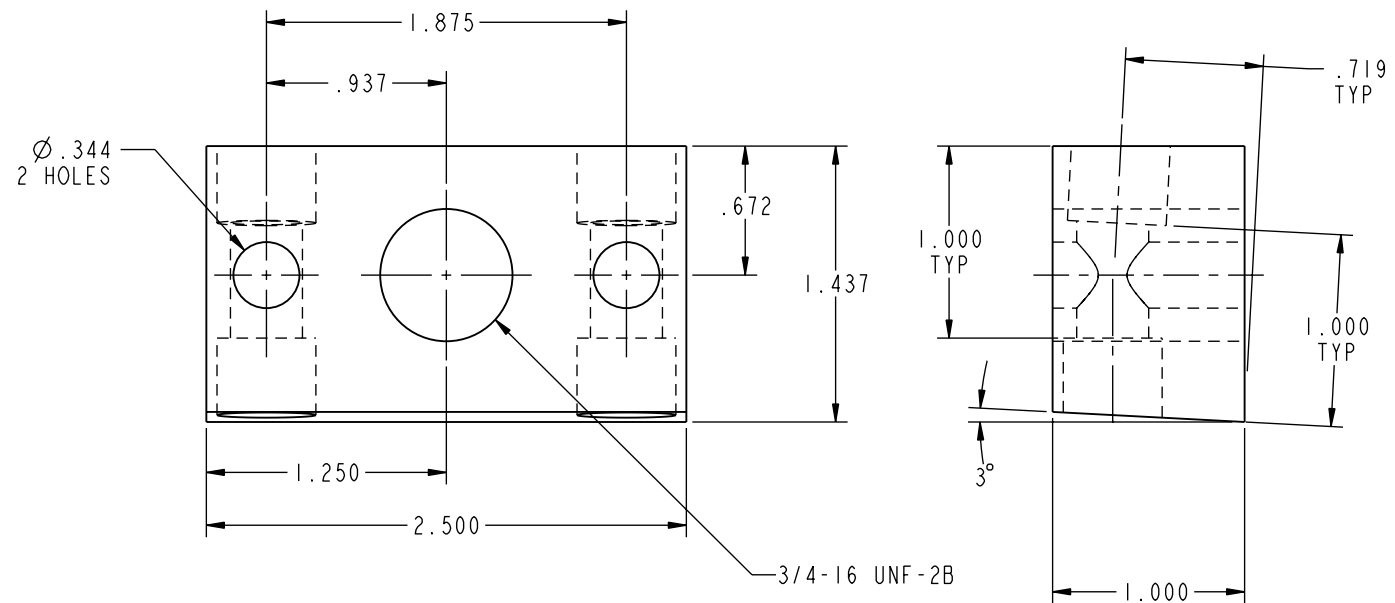
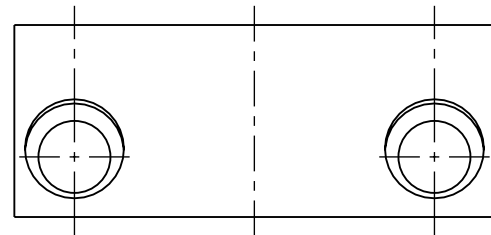
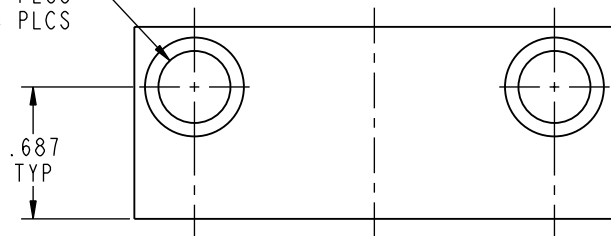


ILC64030700 REV B ECN 2125



∅.375 THRU -2 PLCS
 L∅.515 TO DEPTH SHOWN -4 PLCS



CAD CONTROL
DRAWING



VEKTEK, INC.
1334 E. SIXTH AVE. P.O. BOX 625
EMPORIA, KS. 66801 U.S.A.

B	2125	RELEASE	MES	05-24-10	64030700	B	BLOCK, MOUNTING, 3/4-16
REV	IN ACCORDANCE WITH ECN	EFFECTIVE DATE	REVISED BY	DATE	REFERENCE MODEL	REF REV	''''
DRW BY:	K. ROEMER	DRAWING STATUS: Released			TOLERANCES DO NOT APPLY DIMENSIONS ARE NOMINAL		SIZE B
DATE:	08/28/02	PRODUCTION APPROVED FOR RELEASED STATUS ONLY			FORM FEG036, Rev. A		REV B

SHEET 1 OF 1