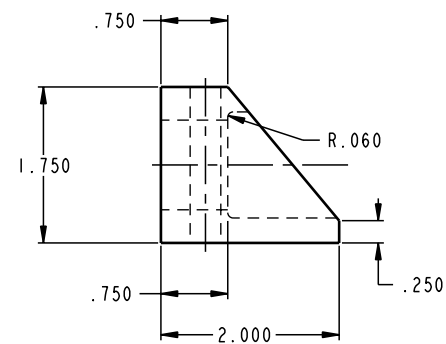
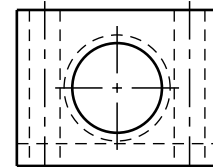
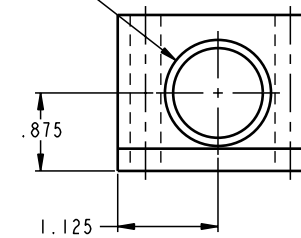


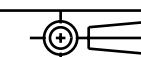
ILC64031000 REV A ECN 716



1 1/16-16 UN-2B
Ø1.190 TO DEPTH SHOWN



CAD CONTROL
DRAWING



VEKTEK, INC.
1334 E. SIXTH AVE. P.O. BOX 625
EMPORIA, KS. 66801 U.S.A.

A	716	RELEASE	K. ROEMER	06-13-05	64031000	F	BRACKET, MOUNTING, 1 1/16-16
REV	IN ACCORDANCE WITH ECN	EFFECTIVE DATE	REVISED BY	DATE	REFERENCE MODEL	REF REV	
DRW BY:	KR	DRAWING STATUS: Released			TOLERANCES DO NOT APPLY		SIZE
DATE:	08/28/02	PRODUCTION APPROVED FOR RELEASED STATUS ONLY			DIMENSIONS ARE NOMINAL		D ILC64031000 REV A

FORM FEG036, Rev. A

SHEET 1 OF 1