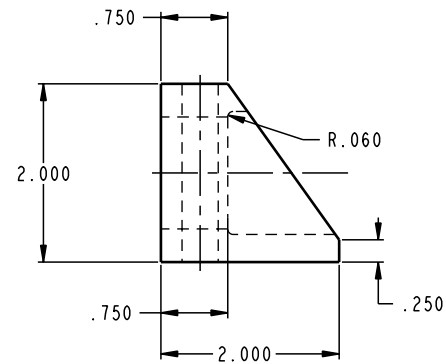
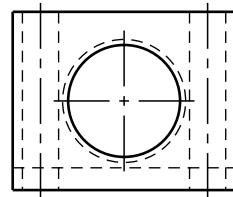
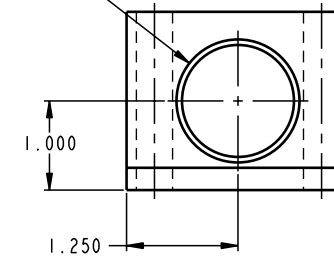


ILC64031300 REV A ECN 716



1 5/16-16 UN-2B  
Ø1.380 TO DEPTH SHOWN



CAD CONTROL  
DRAWING



VEKTEK, INC.  
1334 E. SIXTH AVE. P.O. BOX 625  
EMPORIA, KS. 66801 U.S.A.

|         |                        |  |            |          |                         |         |                              |
|---------|------------------------|--|------------|----------|-------------------------|---------|------------------------------|
| A       | 716                    | RELEASE                                      | K. ROEMER  | 06-13-05 | 64031300                | E       | BRACKET, MOUNTING, 1 5/16-16 |
| REV     | IN ACCORDANCE WITH ECN | EFFECTIVE DATE                               | REVISED BY | DATE     | REFERENCE MODEL         | REF REV |                              |
| DRW BY: | KR                     | DRAWING STATUS: <b>Released</b>              |            |          | TOLERANCES DO NOT APPLY |         | SIZE                         |
| DATE:   | 08/28/02               | PRODUCTION APPROVED FOR RELEASED STATUS ONLY |            |          | DIMENSIONS ARE NOMINAL  |         | D ILC64031300 REV A          |

FORM FEG036, Rev. A

SHEET 1 OF 1