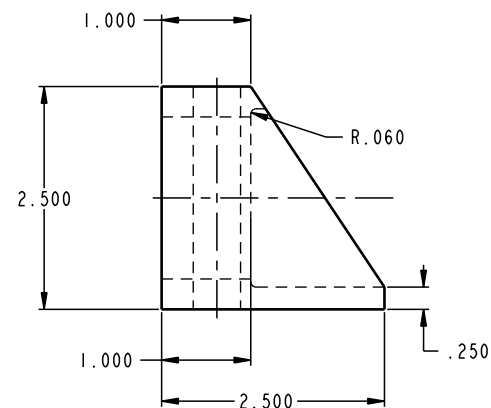
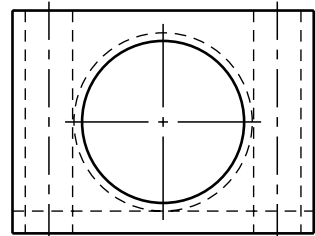
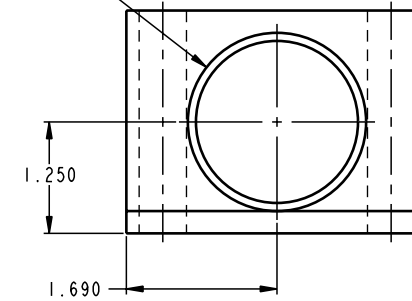


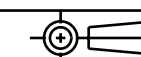
ILC64031800 REV A ECN 716



1 7/8-16 UN-2B
 ⌊ ⌀2.000 TO DEPTH SHOWN



CAD CONTROL
 DRAWING



VEKTEK, INC.
 1334 E. SIXTH AVE. P.O. BOX 625
 EMPORIA, KS. 66801 U.S.A.

| | | | | | | | |
|---------|------------------------|--|------------|----------|-------------------------|---------|-----------------------------|
| A | 716 | RELEASE | K. ROEMER | 06-13-05 | 64031800 | E | BRACKET, MOUNTING, 1 7/8-16 |
| REV | IN ACCORDANCE WITH ECN | EFFECTIVE DATE | REVISED BY | DATE | REFERENCE MODEL | REF REV | |
| DRW BY: | KR | DRAWING STATUS: Released | | | TOLERANCES DO NOT APPLY | | SIZE |
| DATE: | 08/28/02 | PRODUCTION APPROVED FOR RELEASED STATUS ONLY | | | DIMENSIONS ARE NOMINAL | | D ILC64031800 REV A |

FORM FEG036, Rev. A

SHEET 1 OF 1