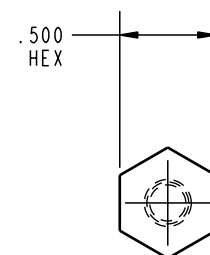
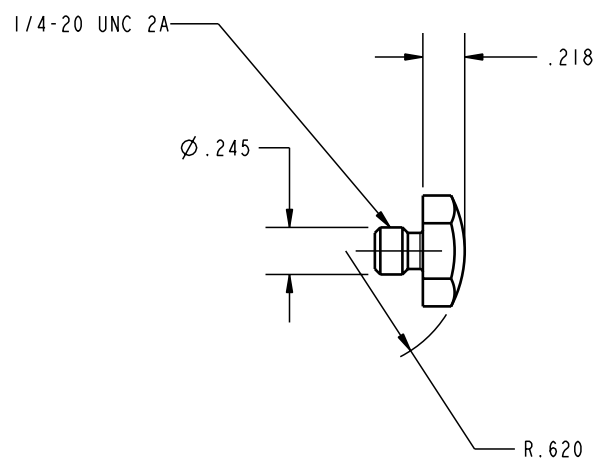


ILC64210410 REV A ECN 656

SCALE 1.000



CAD CONTROL DRAWING



VEKTEK, INC.
1334 E. SIXTH AVE. P.O. BOX 625
EMPORIA, KS. 66801 U.S.A.

A	656	RELEASE	K. ROEMER	06-14-05	64210410	D	END EFFECTOR, SPHERICAL, 1/4-20
REV	IN ACCORDANCE WITH ECN	EFFECTIVE DATE	REVISED BY	DATE	REFERENCE MODEL	REF REV	
DRW BY:	KR	DRAWING STATUS: Released			TOLERANCES DO NOT APPLY DIMENSIONS ARE NOMINAL		SIZE B
DATE:	06/10/02	PRODUCTION APPROVED FOR RELEASED STATUS ONLY					ILC64210410 REV A

FORM FEG036, Rev. A

SHEET 1 OF 1