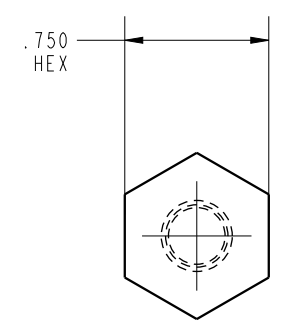

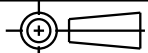


ILC64210620 REV A ECN 3025
SCALE 1.000



CAD CONTROL DRAWING		 VEKTEK, INC. 1334 E. SIXTH AVE. P.O. BOX 625 EMPORIA, KS. 66801 U.S.A.	
			

A	3025	RELEASE	TWA	5/16/16	64210620	A	END EFFECTOR, SPHERICAL, 3/8-24
REV	IN ACCORDANCE WITH ECN	EFFECTIVE DATE	REVISED BY	DATE	REFERENCE MODEL	REF REV	''''
DRW BY:	TWA	DRAWING STATUS: Released			TOLERANCES DO NOT APPLY DIMENSIONS ARE NOMINAL		SIZE B
DATE:	5/16/16	PRODUCTION APPROVED FOR RELEASED STATUS ONLY					ILC64210620 REV A
							FORM FEG036, Rev. B

SHEET 1 OF 1