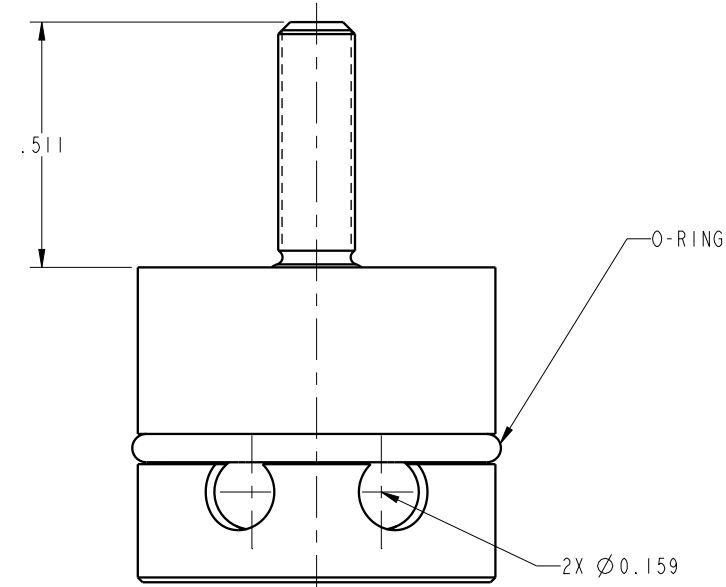
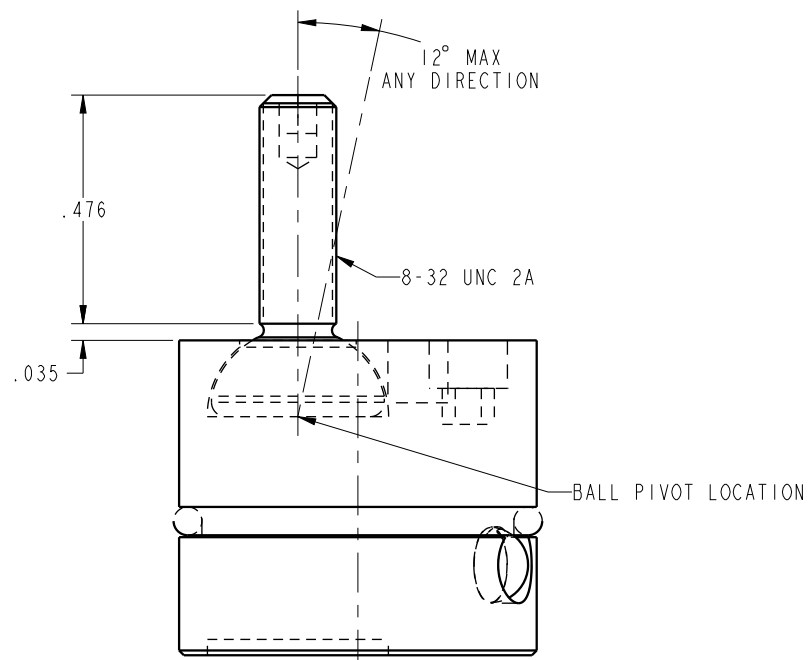

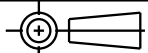


ILC66091205 REV A ECN 2960



CAD CONTROL DRAWING		 VEKTEK, INC. 1334 E. SIXTH AVE. P.O. BOX 625 EMPORIA, KS. 66801 U.S.A.	
			
A 2960	RELEASE	MAJ	1/21/16
REV IN ACCORDANCE WITH ECN	EFFECTIVE DATE	REVISED BY	DATE
DRW BY: MAJ	DRAWING STATUS: Released		66091205 A
DATE: 1-21-16	PRODUCTION APPROVED FOR RELEASED STATUS ONLY		ASSY, DURA PIN, 12, XXHVY
		TOLERANCES DO NOT APPLY DIMENSIONS ARE NOMINAL	SIZE B ILC66091205 REV A
			FORM FEG036, Rev. B

SHEET 1 OF 1