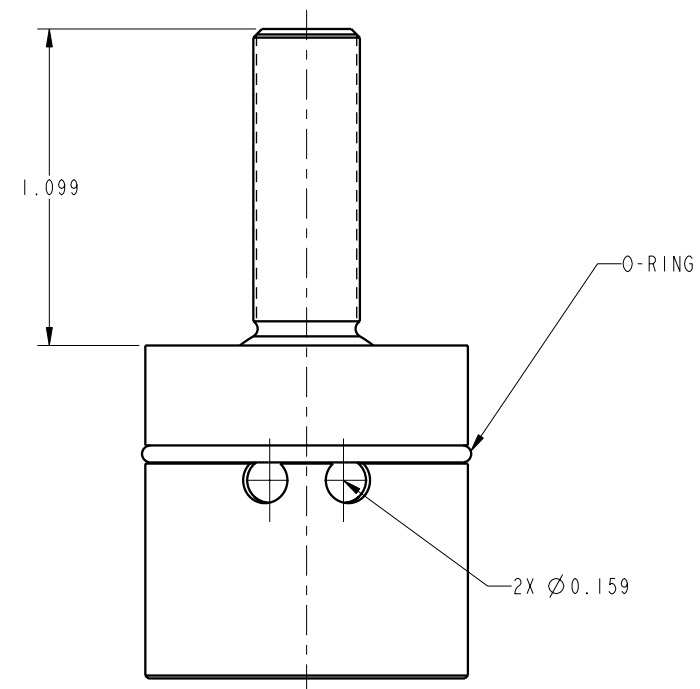
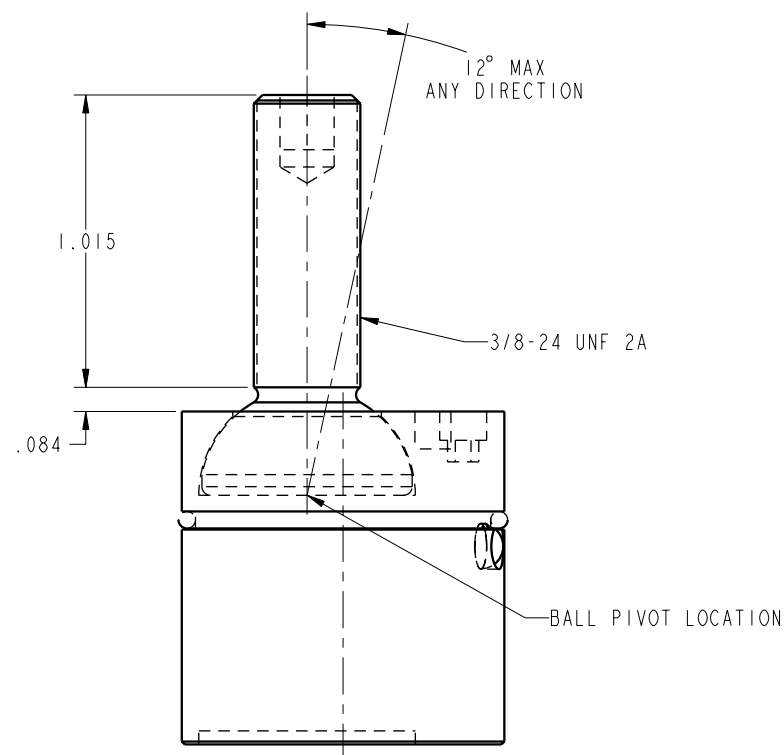


ILC66091802 REV A ECN 2694



CAD CONTROL DRAWING	 VEKTEK, INC. 1334 E. SIXTH AVE. P.O. BOX 625 EMPORIA, KS. 66801 U.S.A.

A	2694	RELEASE	DLB	07/22/14	66091802	A	ASSY, DURA PIN, 18, MDM
REV	IN ACCORDANCE WITH ECN	EFFECTIVE DATE	REVISED BY	DATE	REFERENCE MODEL	REF REV	*****
DRW BY: DLB	DRAWING STATUS: <b>Released</b>				TOLERANCES DO NOT APPLY	SIZE	ILC66091802 REV A
DATE: 07-18-14	PRODUCTION APPROVED FOR RELEASED STATUS ONLY				DIMENSIONS ARE NOMINAL	B	

FORM FEG036, Rev. B

SHEET 1 OF 1