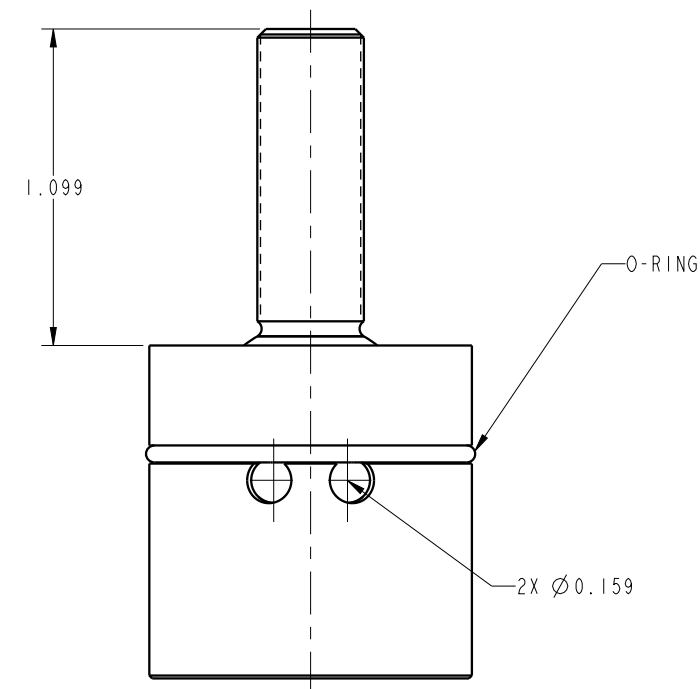
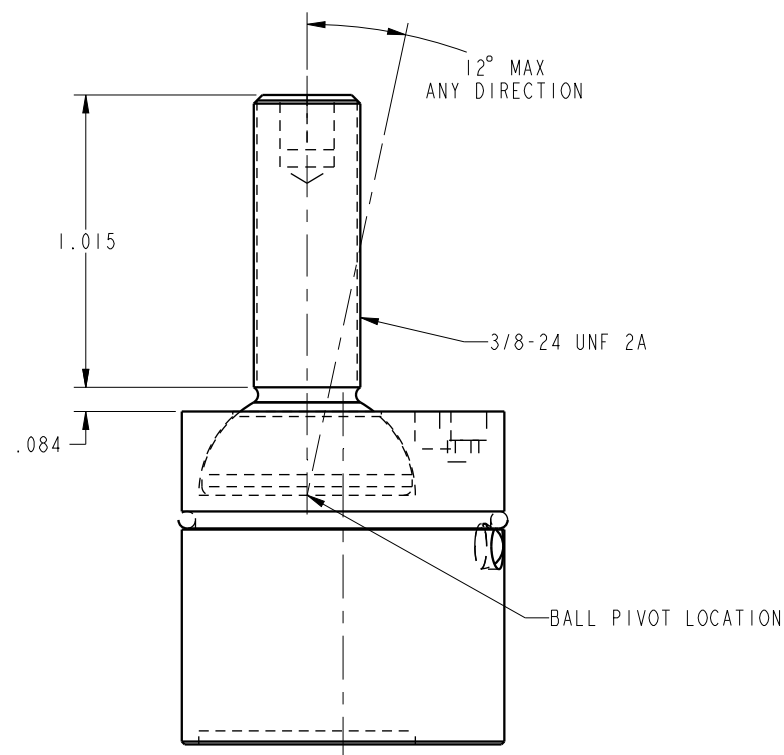


ILC66091805 REV A ECN 2960



CAD CONTROL DRAWING



VEKTEK, INC.
1334 E. SIXTH AVE. P.O. BOX 625
EMPORIA, KS. 66801 U.S.A.

A	2960	RELEASE	MAJ	1/21/16
REV	IN ACCORDANCE WITH ECN	EFFECTIVE DATE	REVISED BY	DATE
DRW BY:	MAJ	DRAWING STATUS: Released		
DATE:	1-21-16	PRODUCTION APPROVED FOR RELEASED STATUS ONLY		

66091805	A
REFERENCE MODEL	REF REV
TOLERANCES DO NOT APPLY DIMENSIONS ARE NOMINAL	

ASSY, DURA PIN, 18, XXHVV
SIZE B
ILC66091805
REV A

FORM FEG036, Rev. B

SHEET 1 OF 1