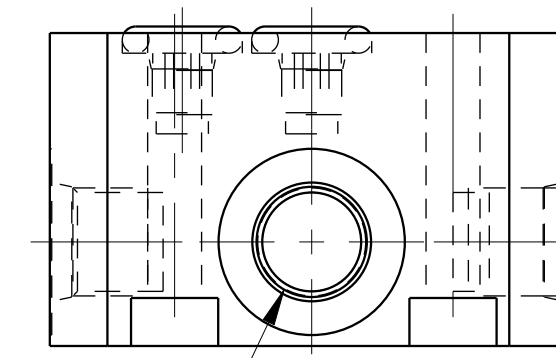
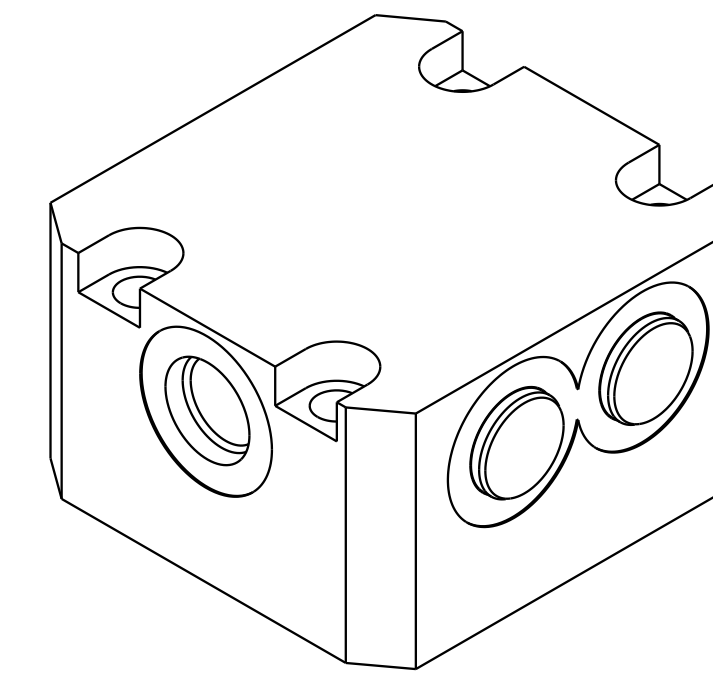


1

2

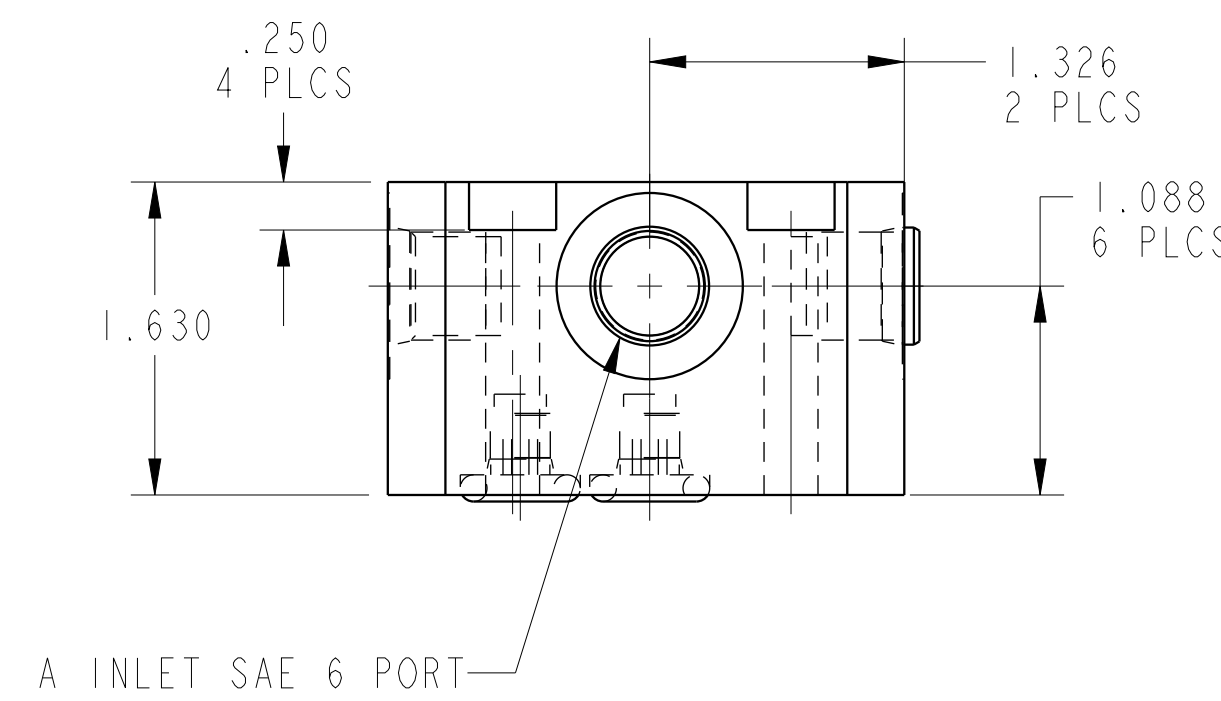
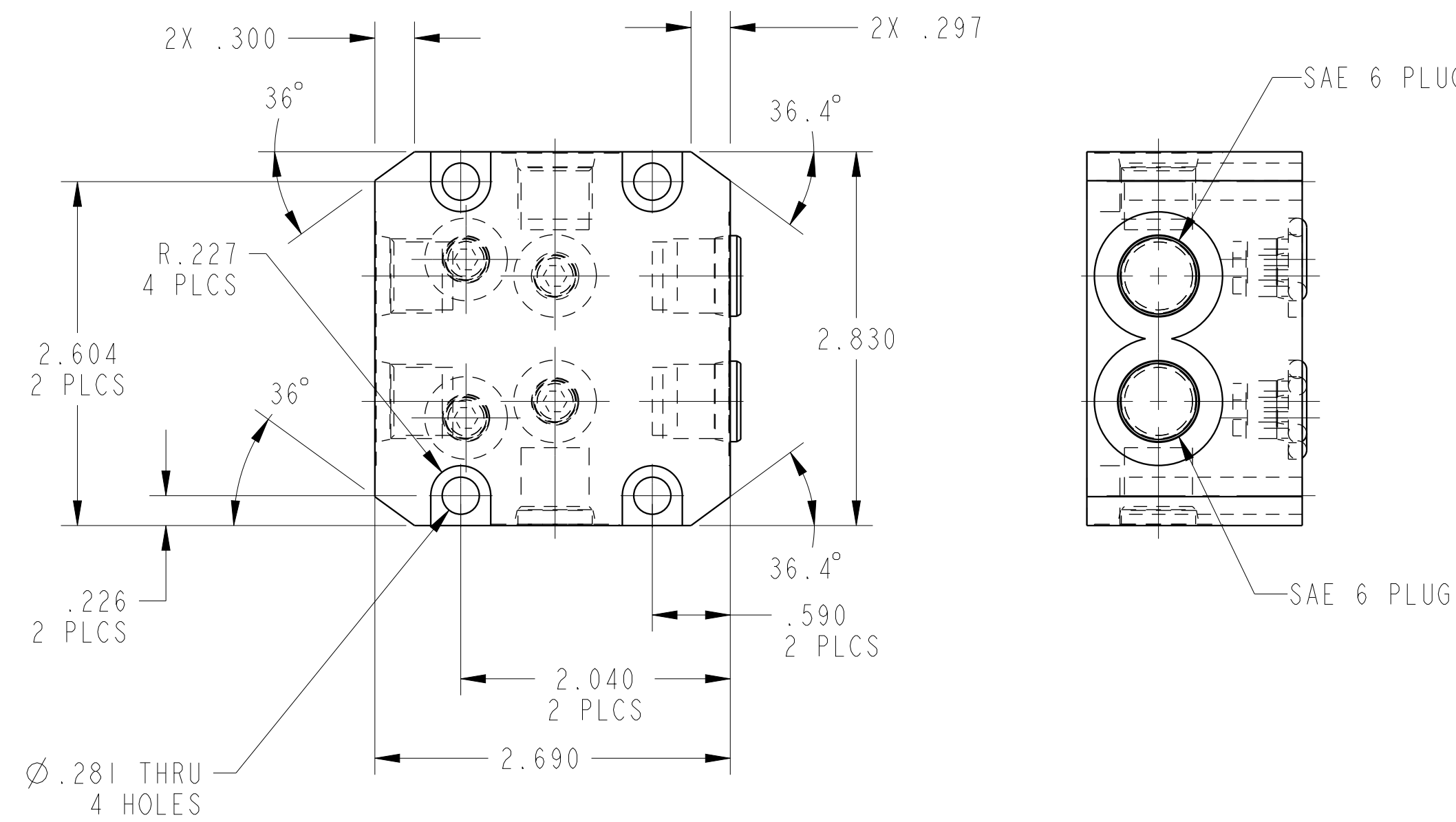
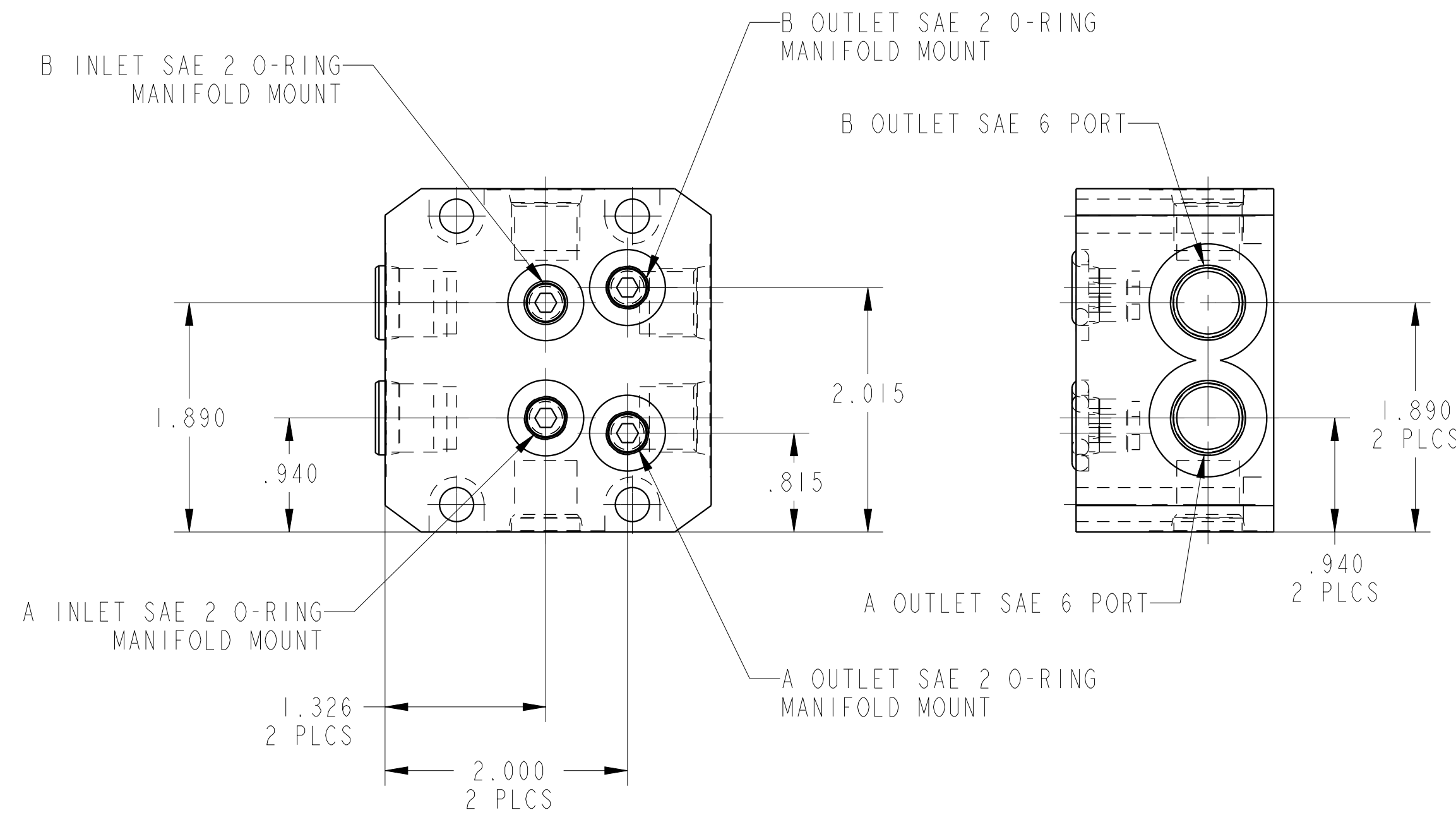
3

4

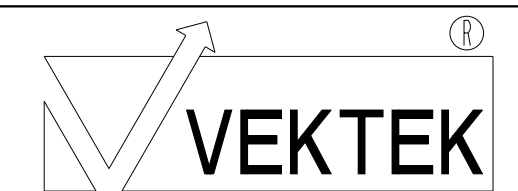


B INLET SAE 6 PORT

ILC70331112 REV B ECN 3524



CAD CONTROL DRAWING



VEKTEK, INC.
1334 E. SIXTH AVE. P.O. BOX 625
EMPORIA, KS. 66801 U.S.A.

B	3524	RELEASE	NPETERS	07/12/18	70331112	D	VLV, CHECK, A-B, MM
REV	IN ACCORDANCE WITH ECN	EFFECTIVE DATE	REVISED BY	DATE	REFERENCE MODEL	REF REV	*****
DRW BY:	K. ROEMER	DRAWING STATUS: Released			TOLERANCES DO NOT APPLY		SIZE
DATE:	02-16-05	PRODUCTION APPROVED FOR RELEASED STATUS ONLY			DIMENSIONS ARE NOMINAL		D
							ILC70331112
							REV B

1

2

3

4

SHEET 1 OF 1