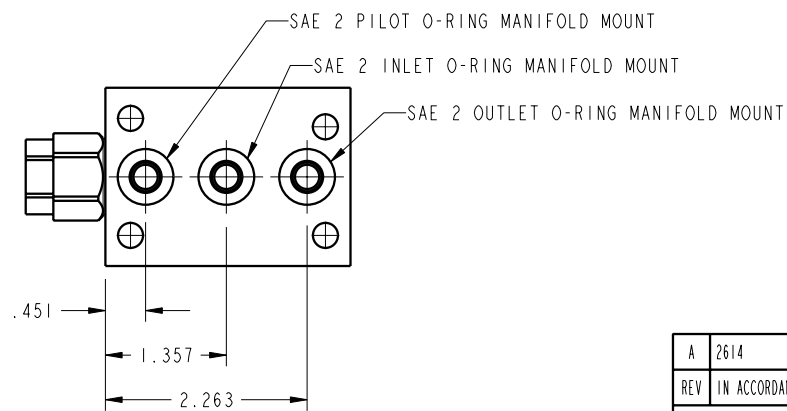
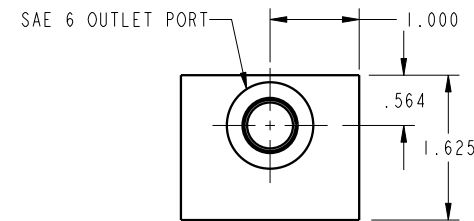
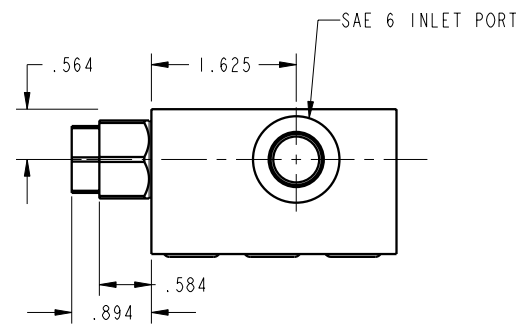
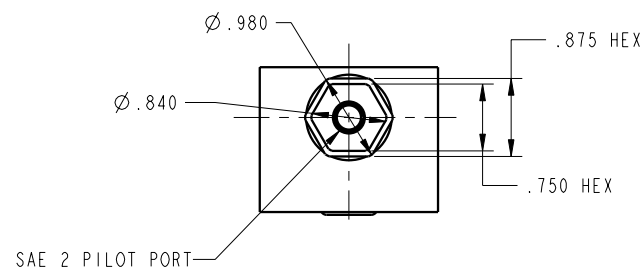


ILC70331113 REV A ECN 2614



CAD CONTROL
DRAWING



VEKTEK, INC.
1334 E. SIXTH AVE. P.O. BOX 625
EMPORIA, KS. 66801 U.S.A.

A	2614	RELEASE	DKC	4/8/14	70331113	A	MANIFOLD, PO CHECK, CM, SAE
REV	IN ACCORDANCE WITH ECN	EFFECTIVE DATE	REVISED BY	DATE	REFERENCE MODEL	REF REV	*****
DRW BY:	DKC	DRAWING STATUS: Released			TOLERANCES DO NOT APPLY		SIZE
DATE:	11/11/13	PRODUCTION APPROVED FOR RELEASED STATUS ONLY			DIMENSIONS ARE NOMINAL		D ILC70331113 REV A

FORM FEG036, Rev. B

SHEET 1 OF 1