

1

2

3

4

D

D

C

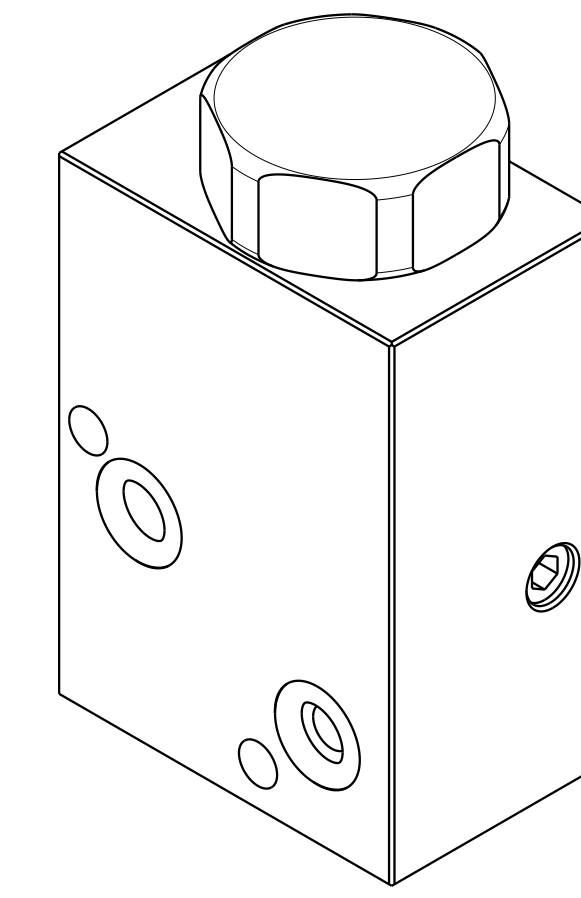
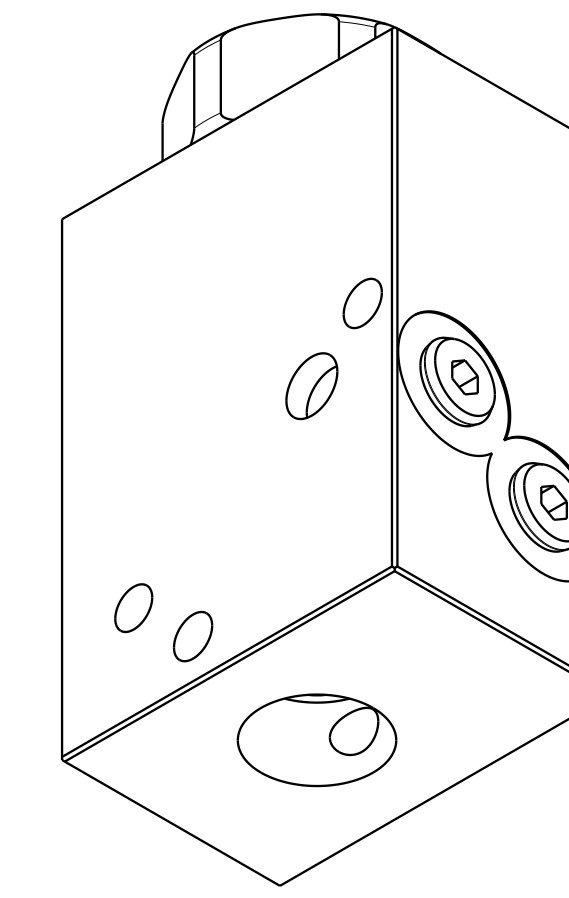
C

B

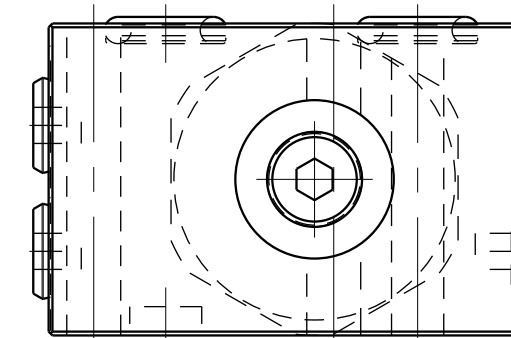
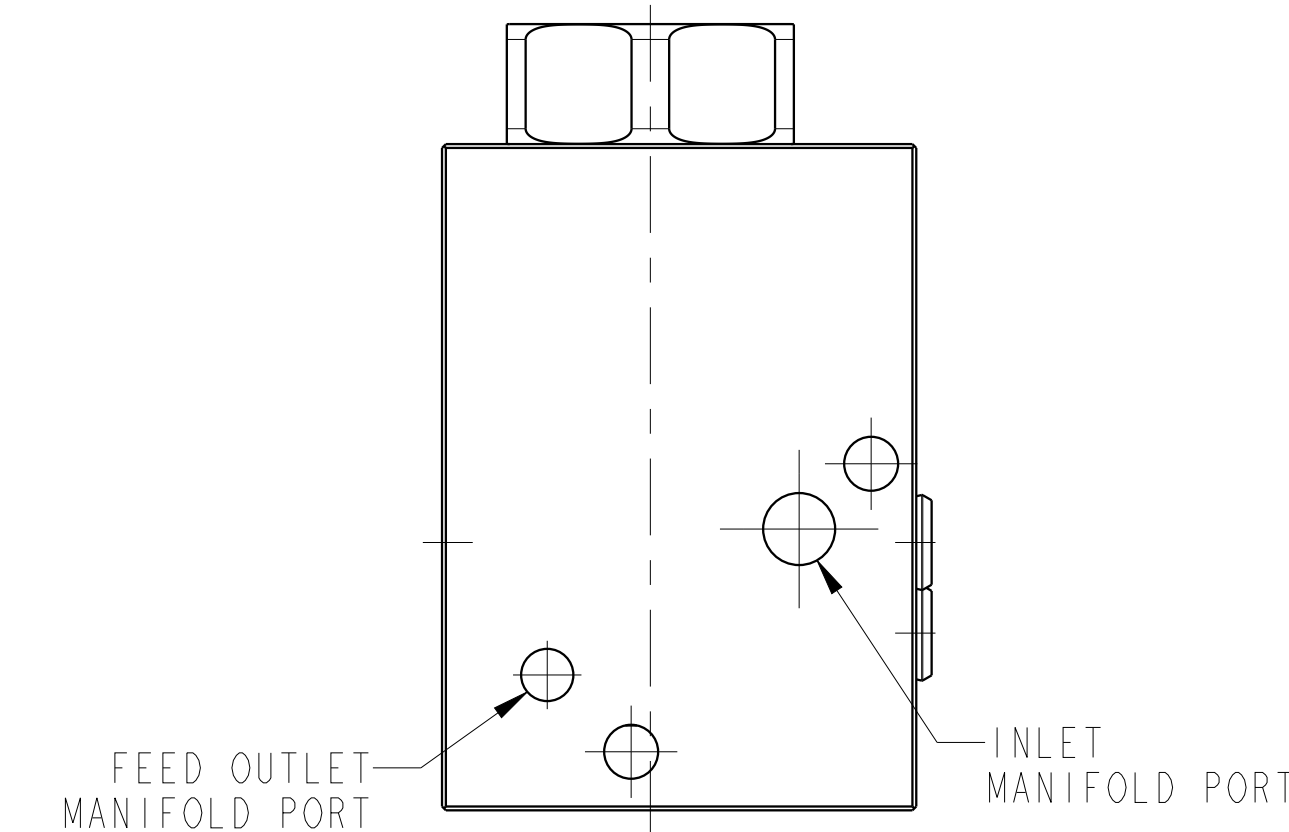
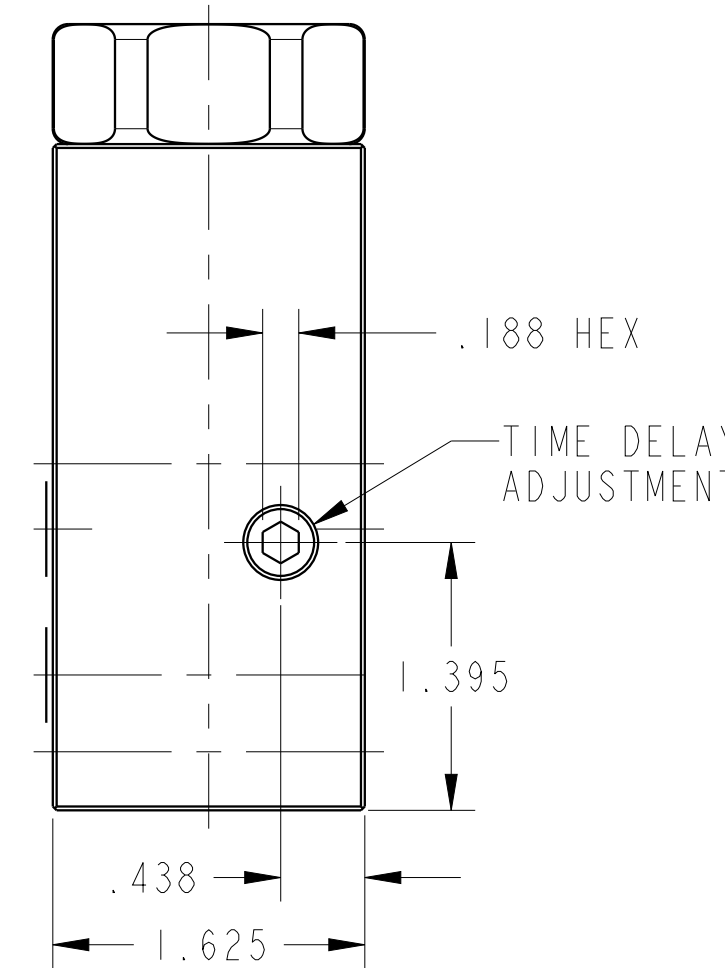
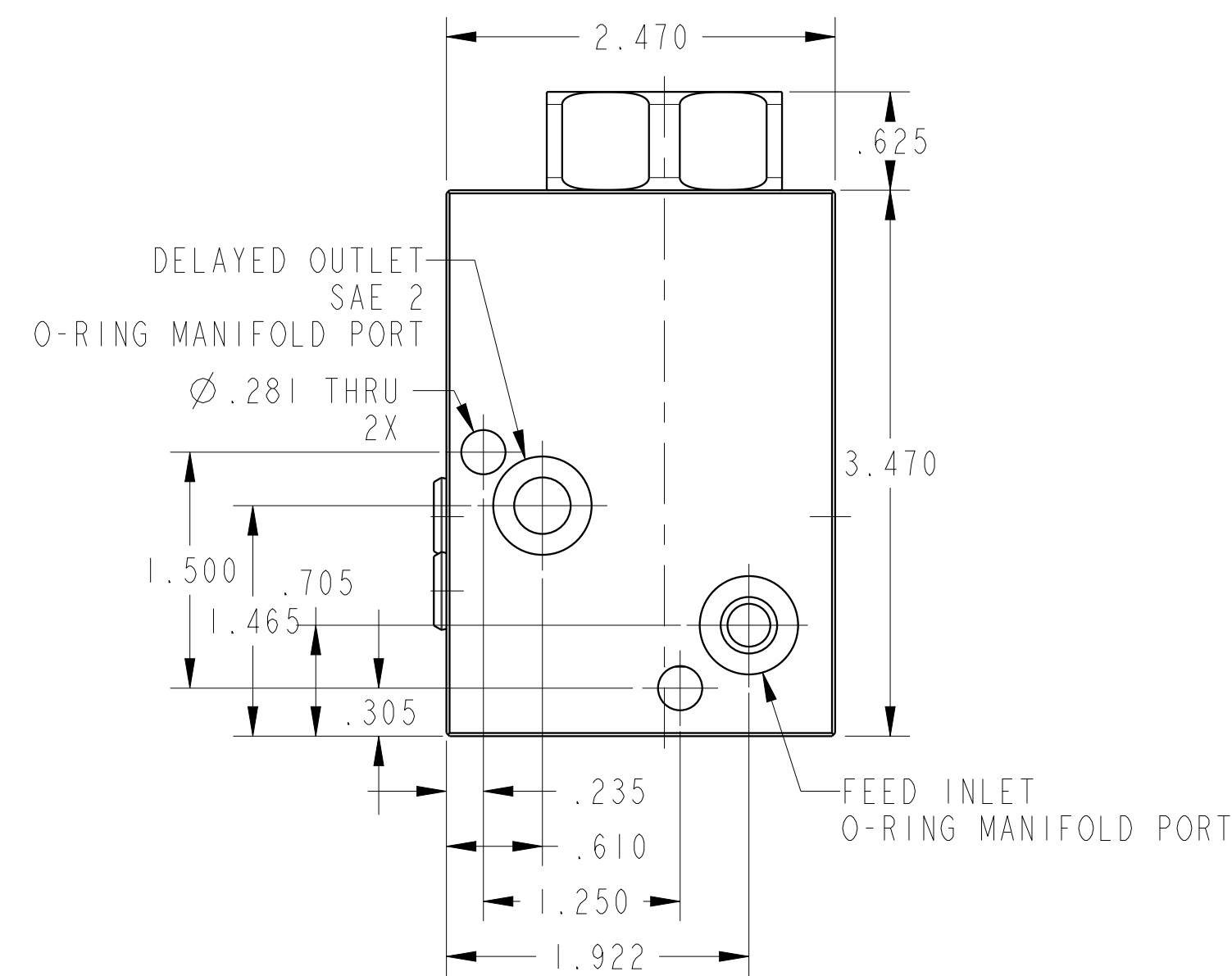
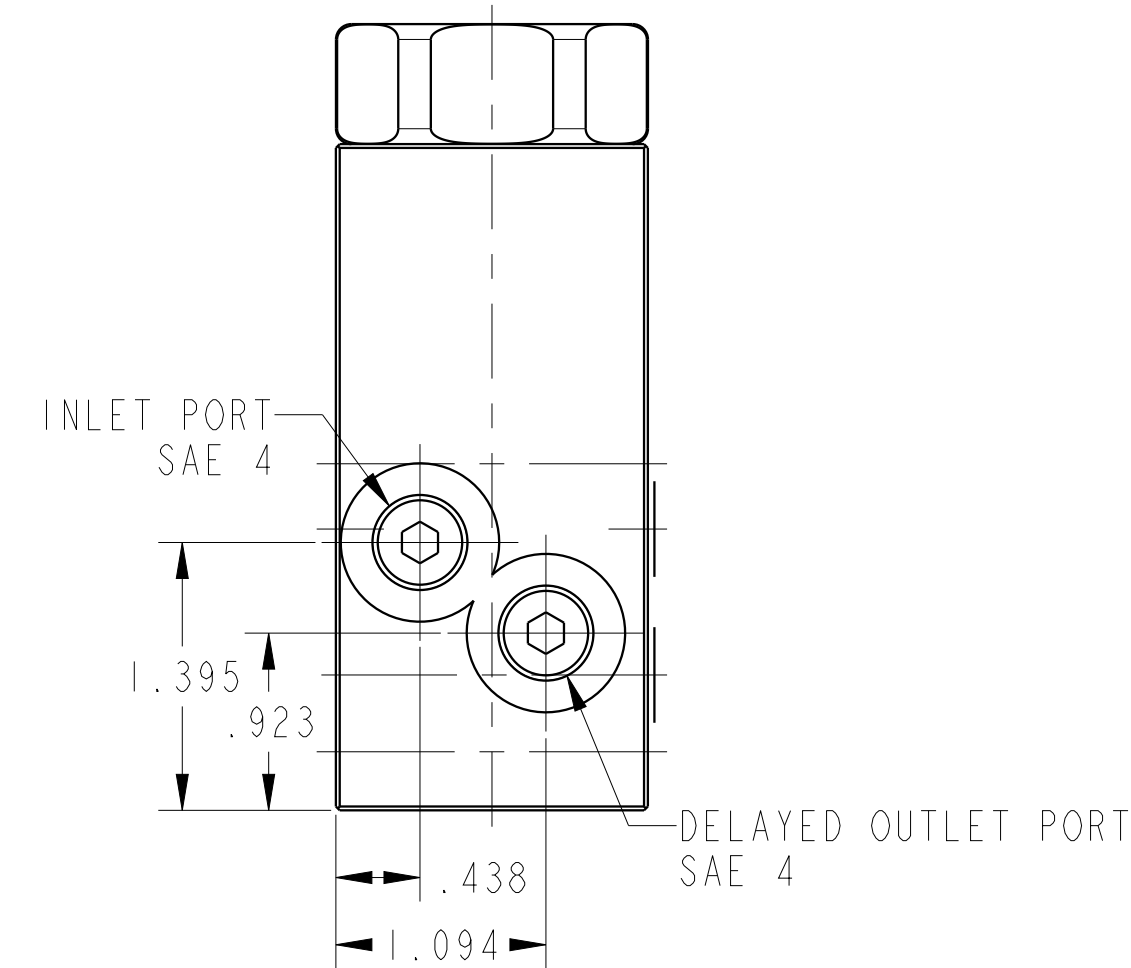
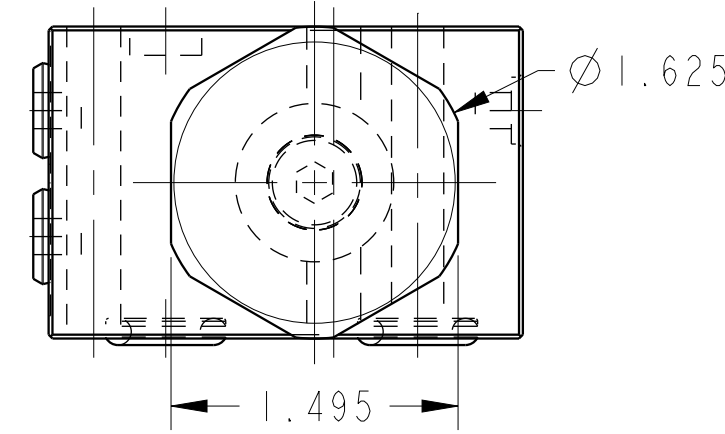
B

A

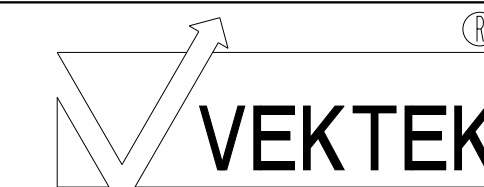
A



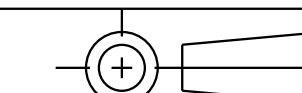
ILC70431000 REV A ECN 2829



CAD CONTROL DRAWING



VEKTEK, INC.
 1334 E. SIXTH AVE. P.O. BOX 625
 EMPORIA, KS. 66801 U.S.A.



A	2829	RELEASE	ALUTHI	3-26-15	70-4310-00	A	VALVE, UNCLAMP DELAY
REV	IN ACCORDANCE WITH ECN	EFFECTIVE DATE	REVISED BY	DATE	REFERENCE MODEL	REF REV	*****
DRW BY: ALUTHI		DRAWING STATUS: Released			TOLERANCES DO NOT APPLY		SIZE
DATE: 3-26-15		PRODUCTION APPROVED FOR RELEASED STATUS ONLY			DIMENSIONS ARE NOMINAL		D ILC70431000 REV A

1

2

3

4

SHEET 1 OF 1