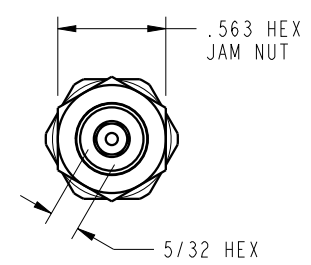
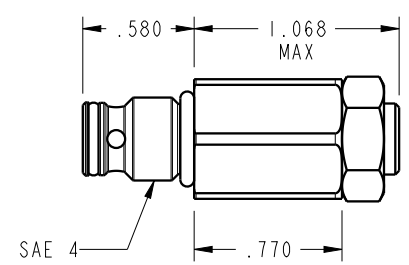
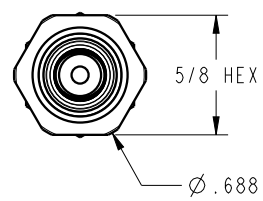




ILC70443711 REV A ECN 3559



CAD CONTROL DRAWING		 VEKTEK, INC. 1334 E. SIXTH AVE. P.O. BOX 625 EMPORIA, KS. 66801 U.S.A.	
			

A	3559	RELEASE	ATHOMSEN	22-AUG-2018	70443711	A	ASSY, IP-SEQ, SAE, .580, 1500 PSI
REV	IN ACCORDANCE WITH ECN	EFFECTIVE DATE	REVISED BY	DATE	REFERENCE MODEL	REF REV	*****
DRW BY:	ATHOMSEN	DRAWING STATUS: Released			TOLERANCES DO NOT APPLY DIMENSIONS ARE NOMINAL		SIZE B
DATE:	22-AUG-2018	PRODUCTION APPROVED FOR RELEASED STATUS ONLY			ILC70443711		REV A

FORM FEG036, Rev. B