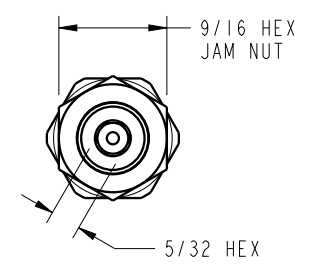
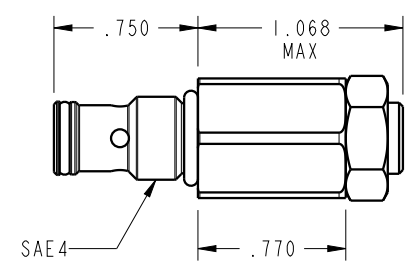
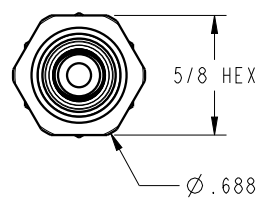



ILC70443721 REV A ECN 3559



CAD CONTROL DRAWING				 VEKTEK, INC. 1334 E. SIXTH AVE. P.O. BOX 625 EMPORIA, KS. 66801 U.S.A.			
A	3559	RELEASE	ATHOMSEN	22-AUG-2018	70443721	A	ASSY, IP-SEQ, SAE, .750, 1500 PSI
REV	IN ACCORDANCE WITH ECN	EFFECTIVE DATE	REVISED BY	DATE	REFERENCE MODEL	REF REV	*****
DRW BY:	ATHOMSEN	DRAWING STATUS: Released			TOLERANCES DO NOT APPLY	SIZE	ILC70443721
DATE:	22-AUG-2018	PRODUCTION APPROVED FOR RELEASED STATUS ONLY			DIMENSIONS ARE NOMINAL	B	REV A
							FORM FEG036, Rev. B