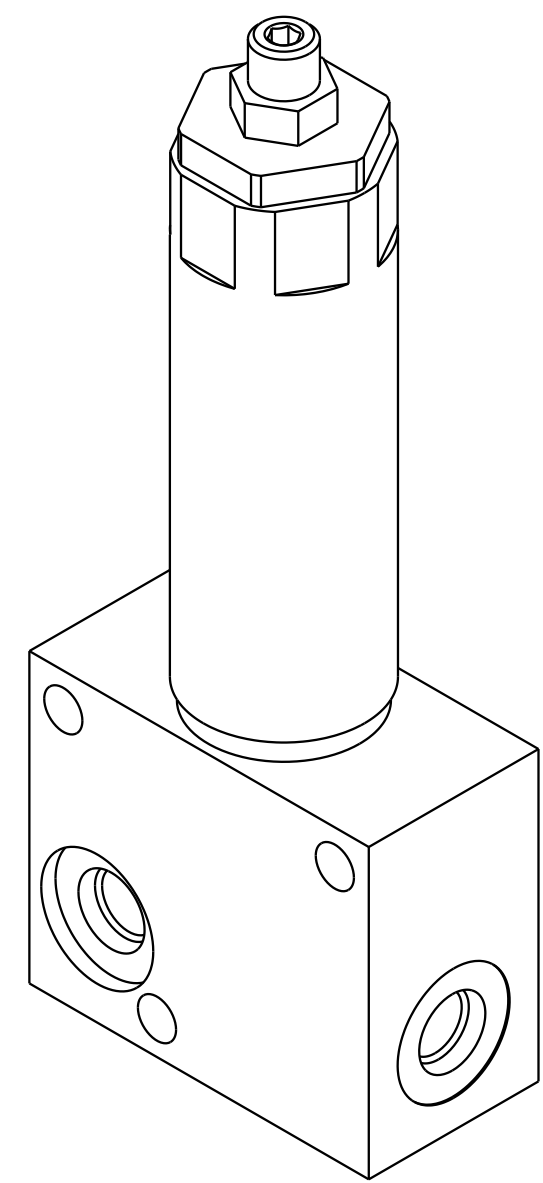


1

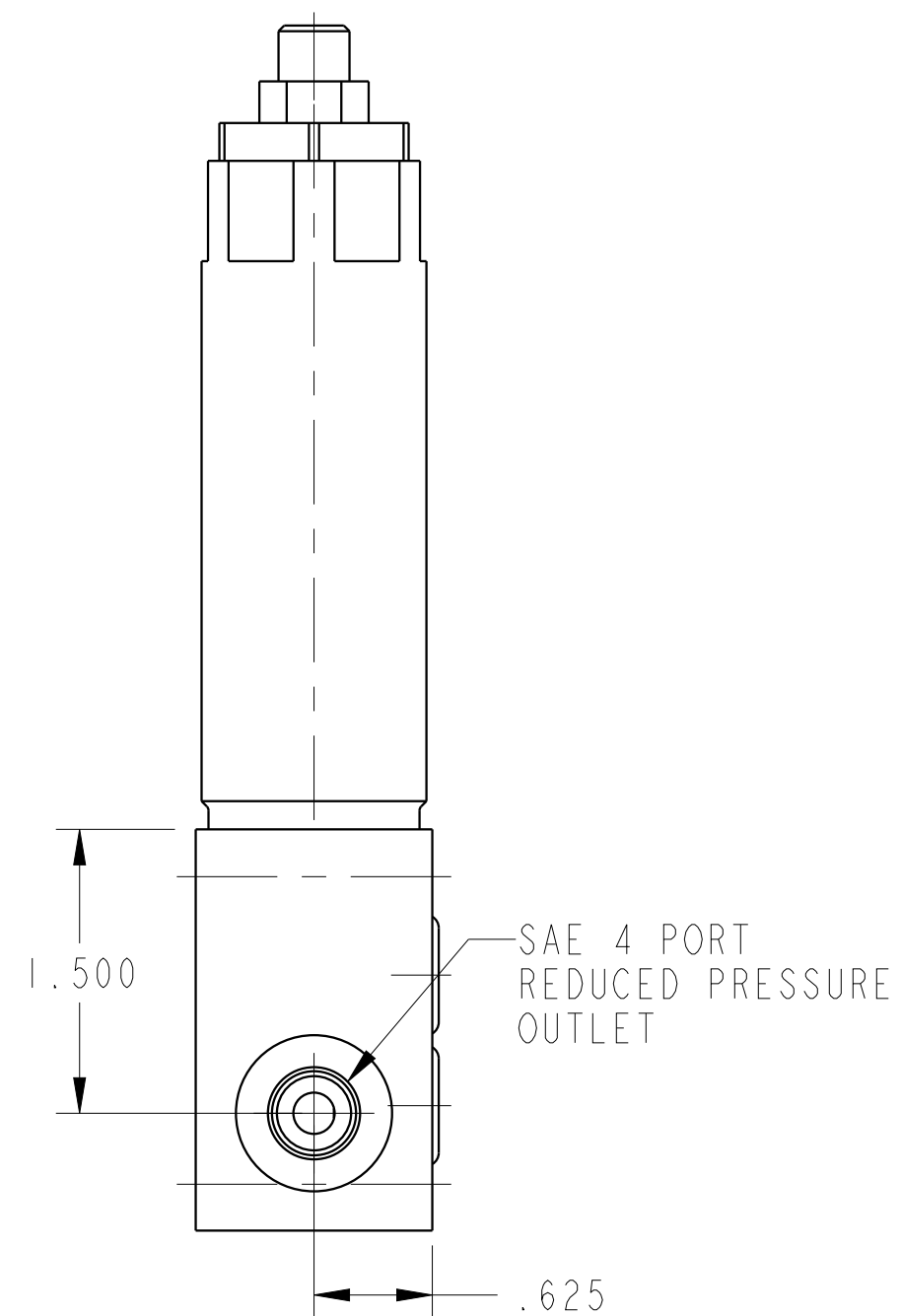
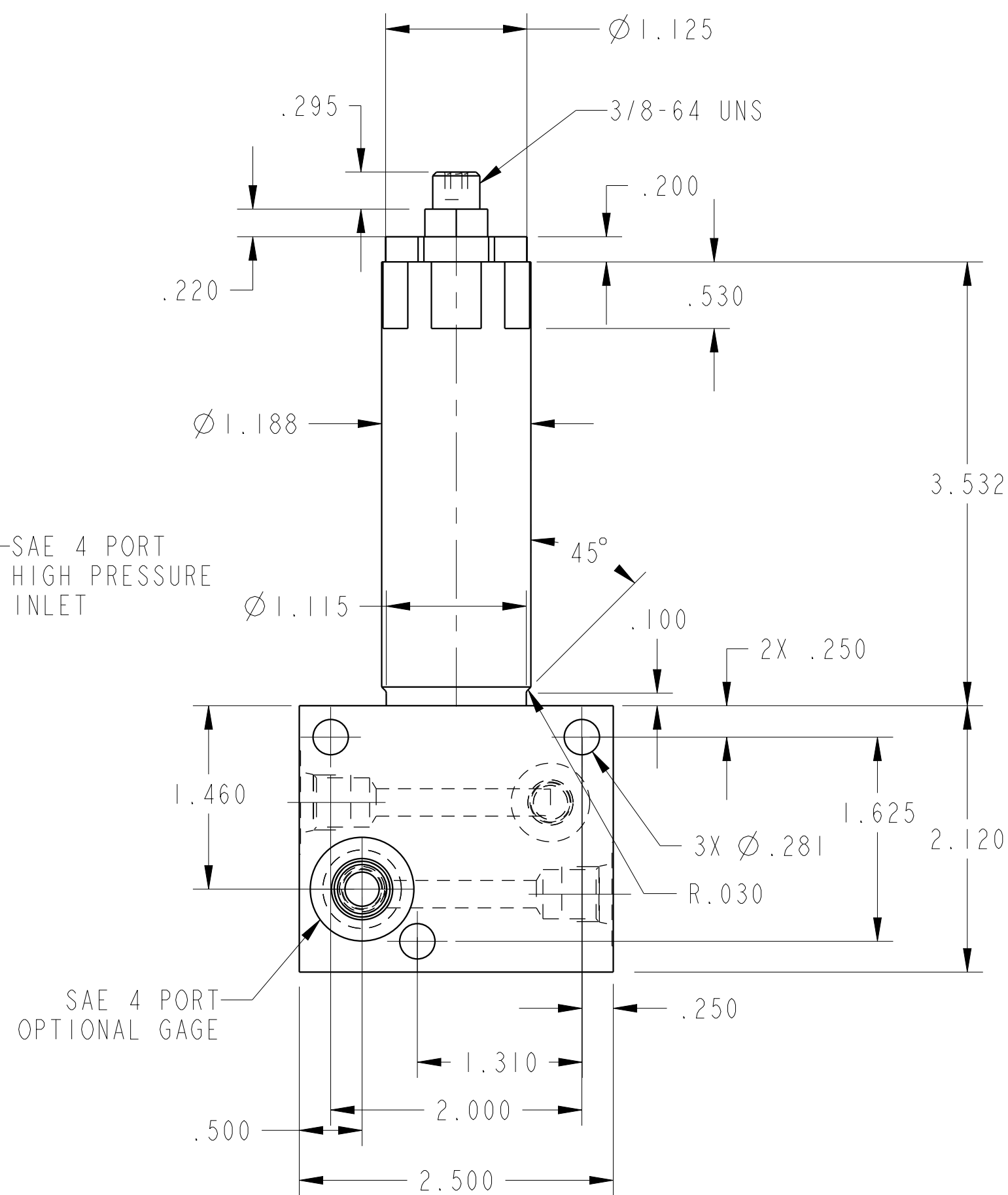
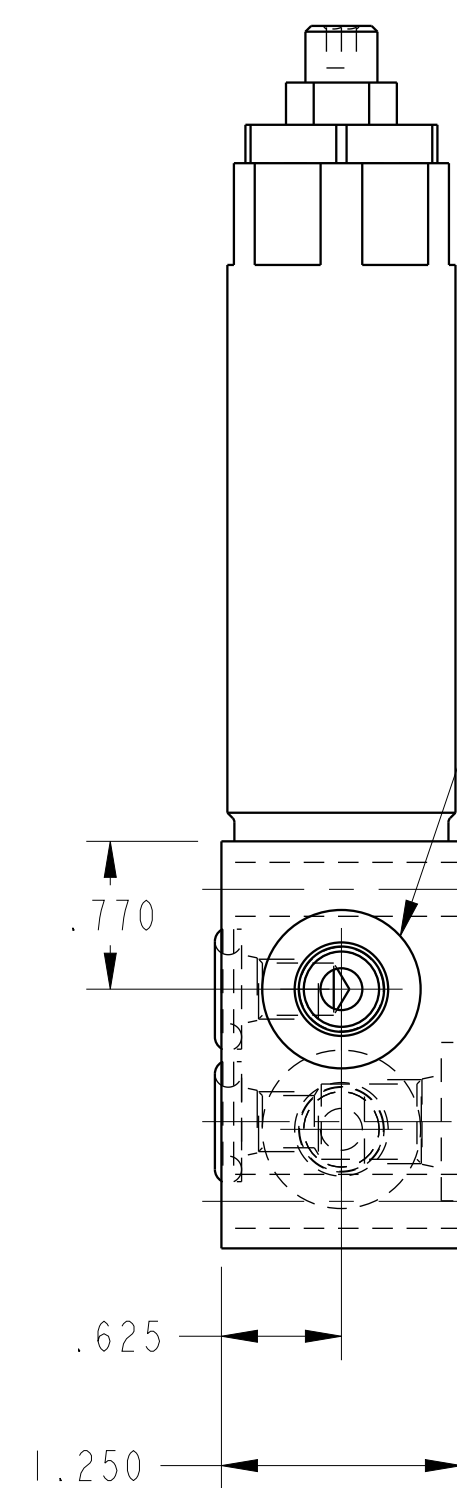
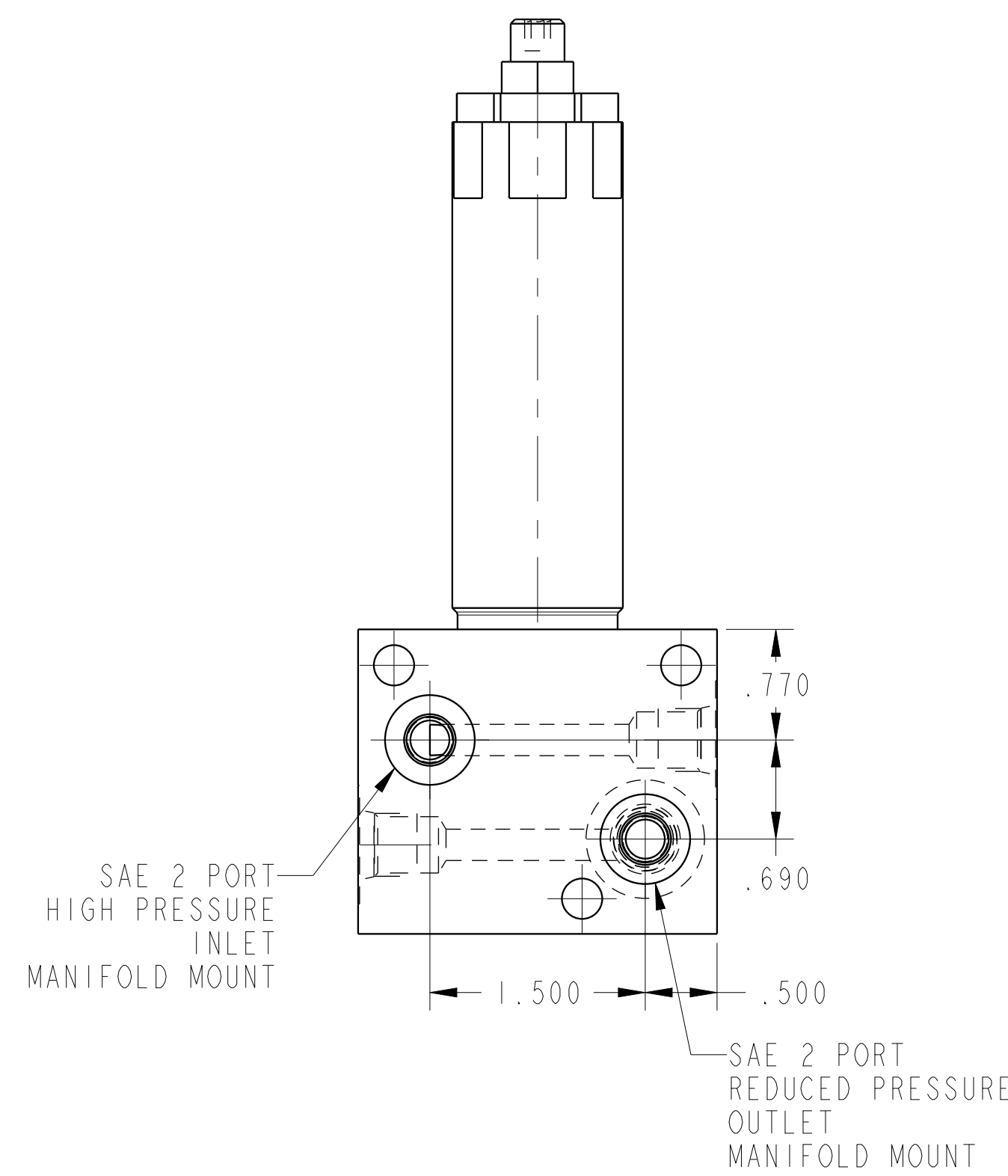
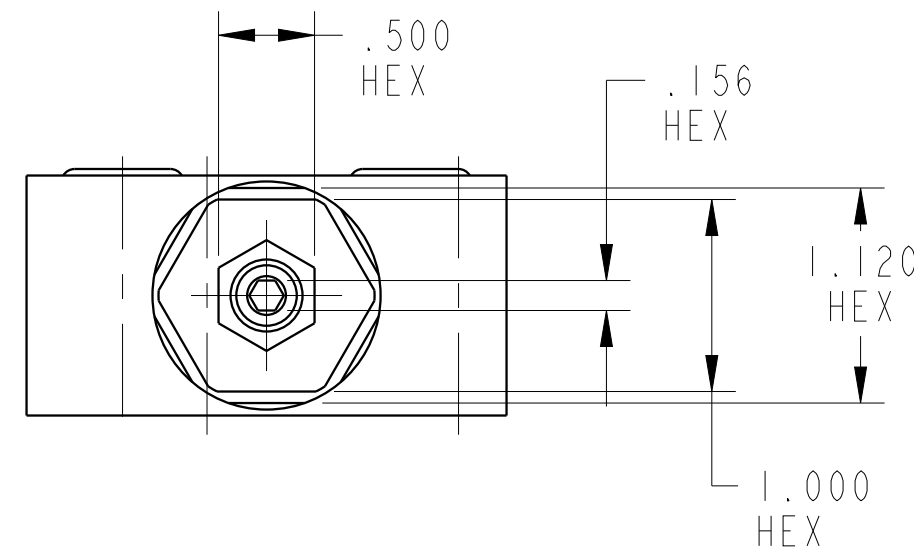
2

3

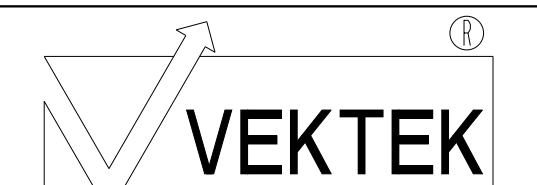
4



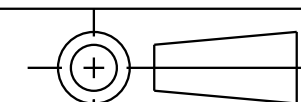
ILC70541001 REV B ECN 4534



CAD CONTROL DRAWING



VEKTEK, INC.
1334 E. SIXTH AVE. P.O. BOX 625
EMPORIA, KS. 66801 U.S.A.



B	4534	RELEASE	ALS	10/5/21	70541001	E	PRV, LP, MANIFOLD
REV	IN ACCORDANCE WITH ECN	EFFECTIVE DATE	REVISED BY	DATE	REFERENCE MODEL	REF REV	
DRW BY:	DKC	DRAWING STATUS: Released			TOLERANCES DO NOT APPLY		SIZE
DATE:	11-25-12	PRODUCTION APPROVED FOR RELEASED STATUS ONLY			DIMENSIONS ARE NOMINAL		D ILC70541001 REV B

1

2

3

4