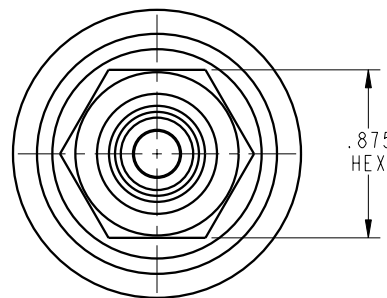


ILC70750074 REV A ECN 2295

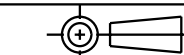


CAD CONTROL
DRAWING



VEKTEK, INC.
1334 E. SIXTH AVE. P.O. BOX 625
EMPORIA, KS. 66801 U.S.A.

| | | | | | | | |
|---------|------------------------|--|------------|---------|---|---------|------------------------|
| A | 2295 | RELEASE | DKC | 7-21-11 | 70750074 | A | SWITCH, PRESS, M8 MALE |
| REV | IN ACCORDANCE WITH ECN | EFFECTIVE DATE | REVISED BY | DATE | REFERENCE MODEL | REF REV | '''' |
| DRW BY: | DKC | DRAWING STATUS: Released | | | TOLERANCES DO NOT APPLY DIMENSIONS ARE NOMINAL | | SIZE B |
| DATE: | 7-13-11 | PRODUCTION APPROVED FOR RELEASED STATUS ONLY | | | | | ILC70750074 REV A |



FORM FEG036, Rev. A

SHEET 1 OF 1