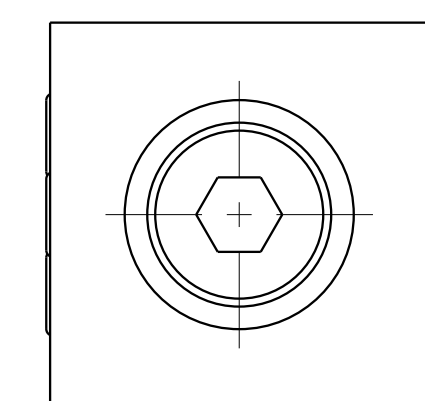
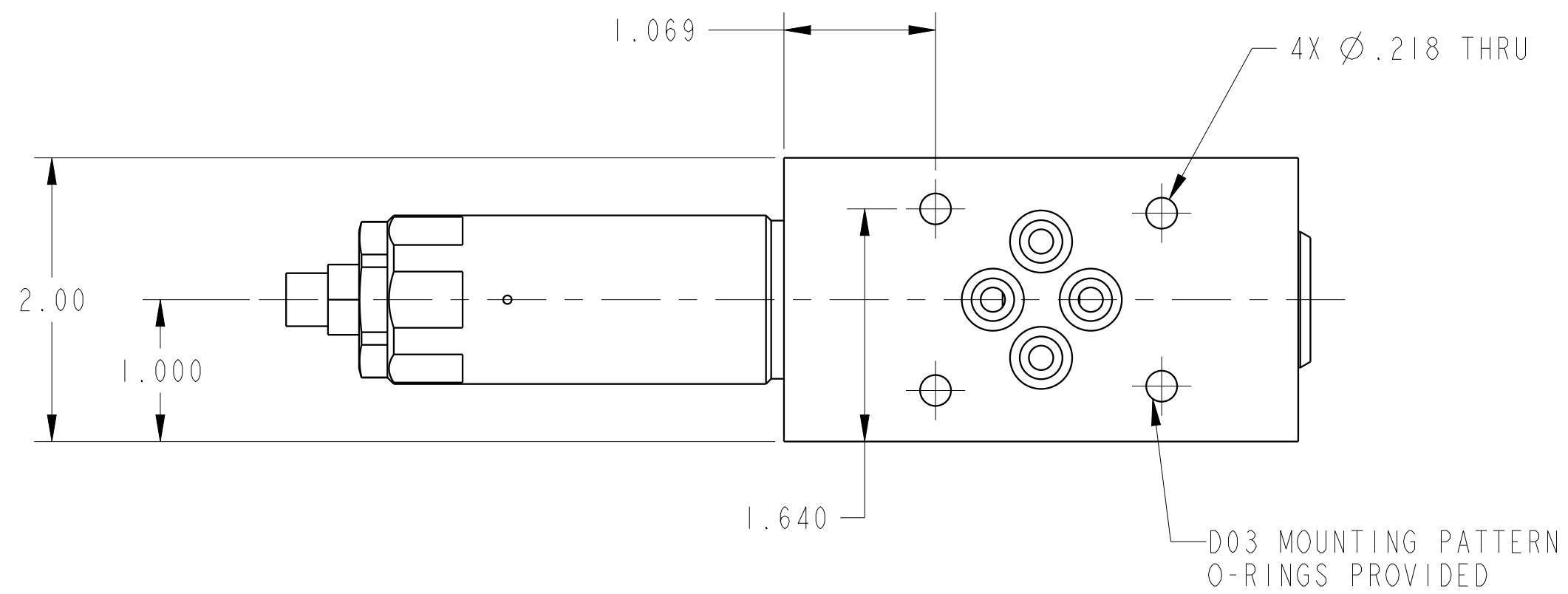
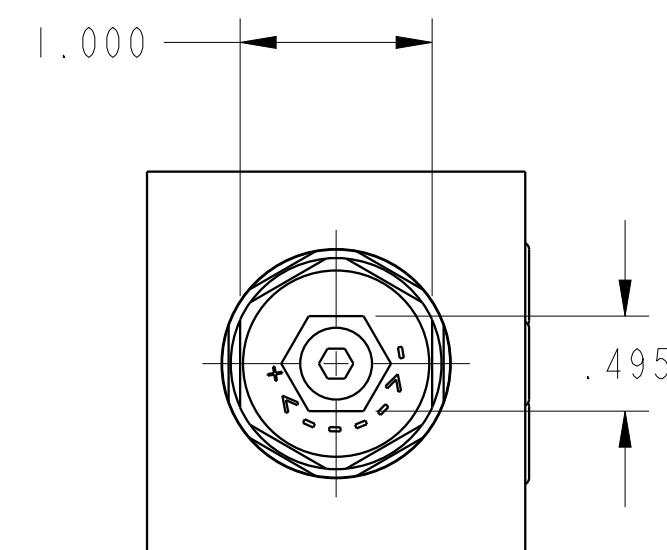


ILC70842551 REV B ECN4534



CAD CONTROL DRAWING			
		VEKTEK, INC. 1334 E. SIXTH AVE. P.O. BOX 625 EMPORIA, KS. 66801 U.S.A.	

B	4534	RELEASE	ALS	10/5/21	70842551	F	ASSY, CONTROL BLOCK, PRV, SINGLE
REV	IN ACCORDANCE WITH ECN	EFFECTIVE DATE	REVISED BY	DATE	REFERENCE MODEL	REF REV	
DRW BY: JDW		DRAWING STATUS: Released			TOLERANCES DO NOT APPLY DIMENSIONS ARE NOMINAL		SIZE D
DATE: 03/05/12		PRODUCTION APPROVED FOR RELEASED STATUS ONLY			ILC70842551		REV B