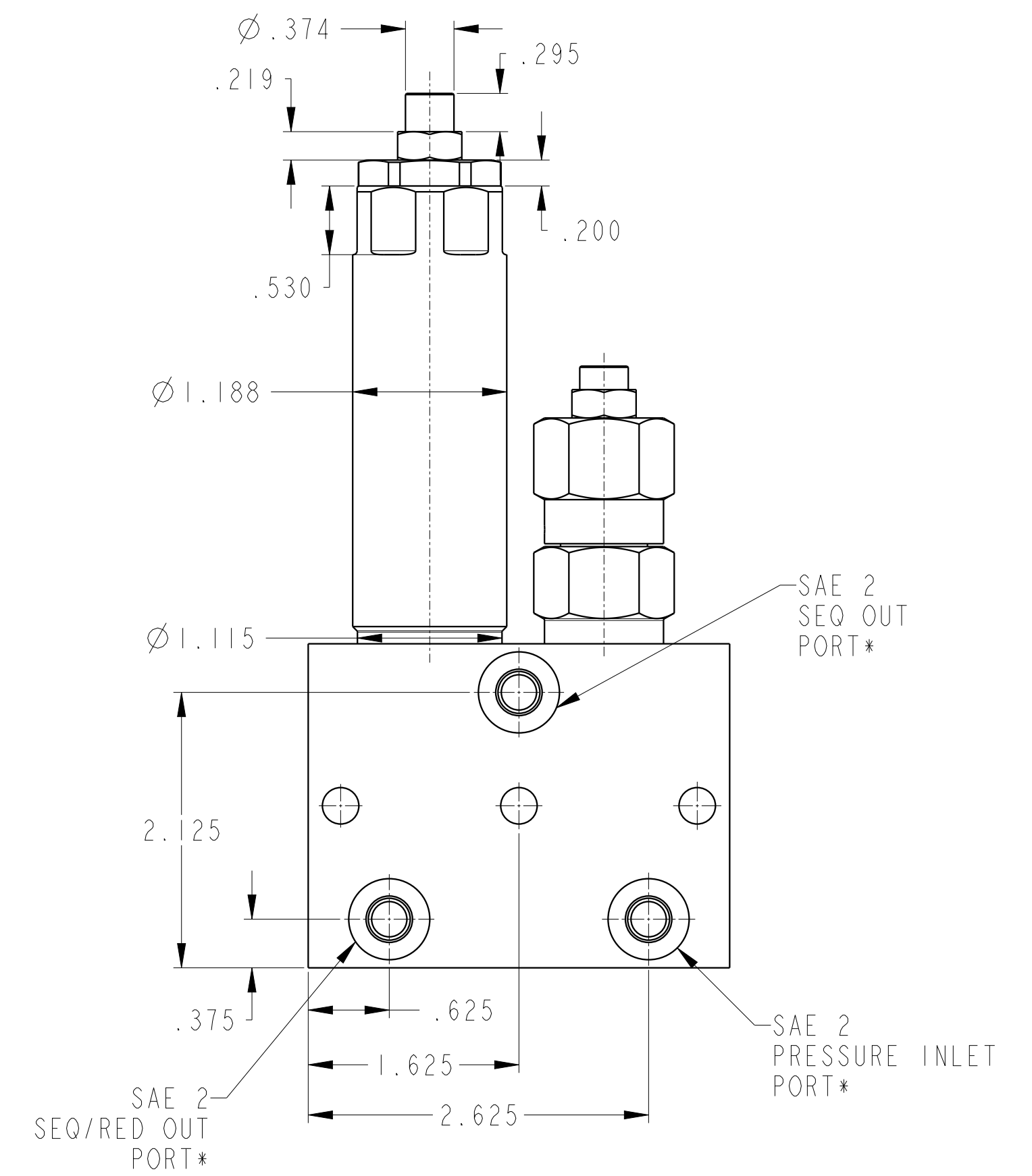
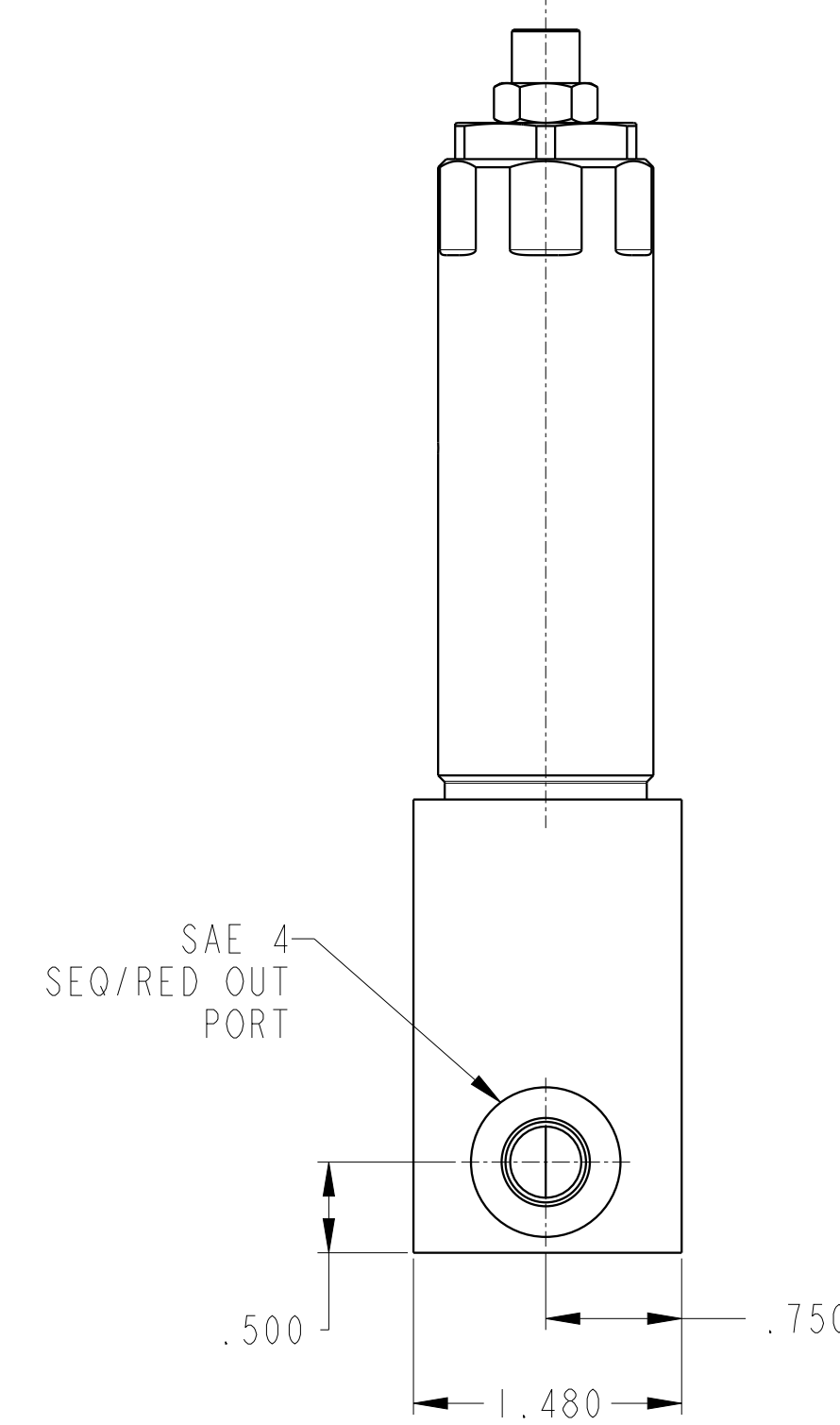
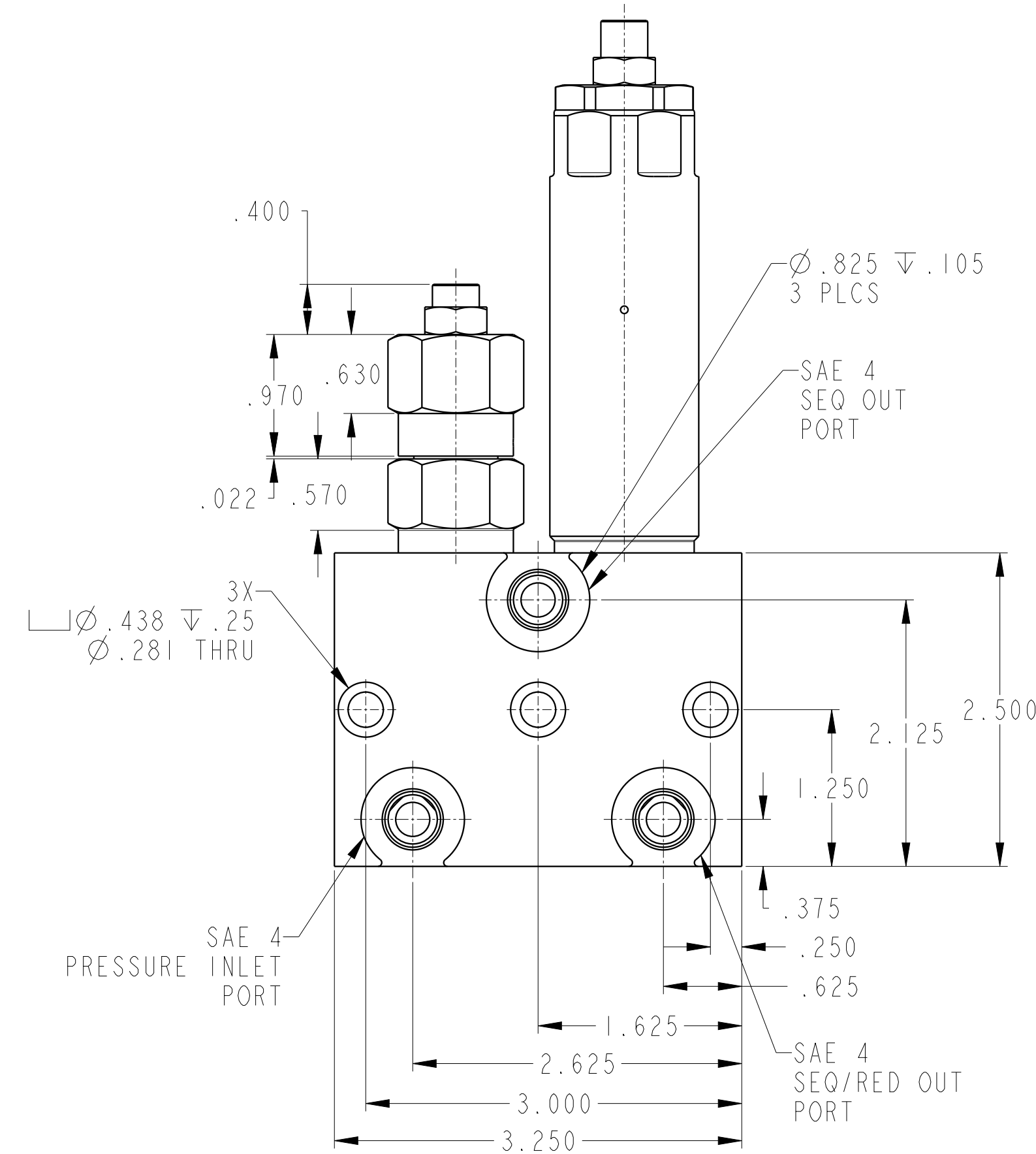
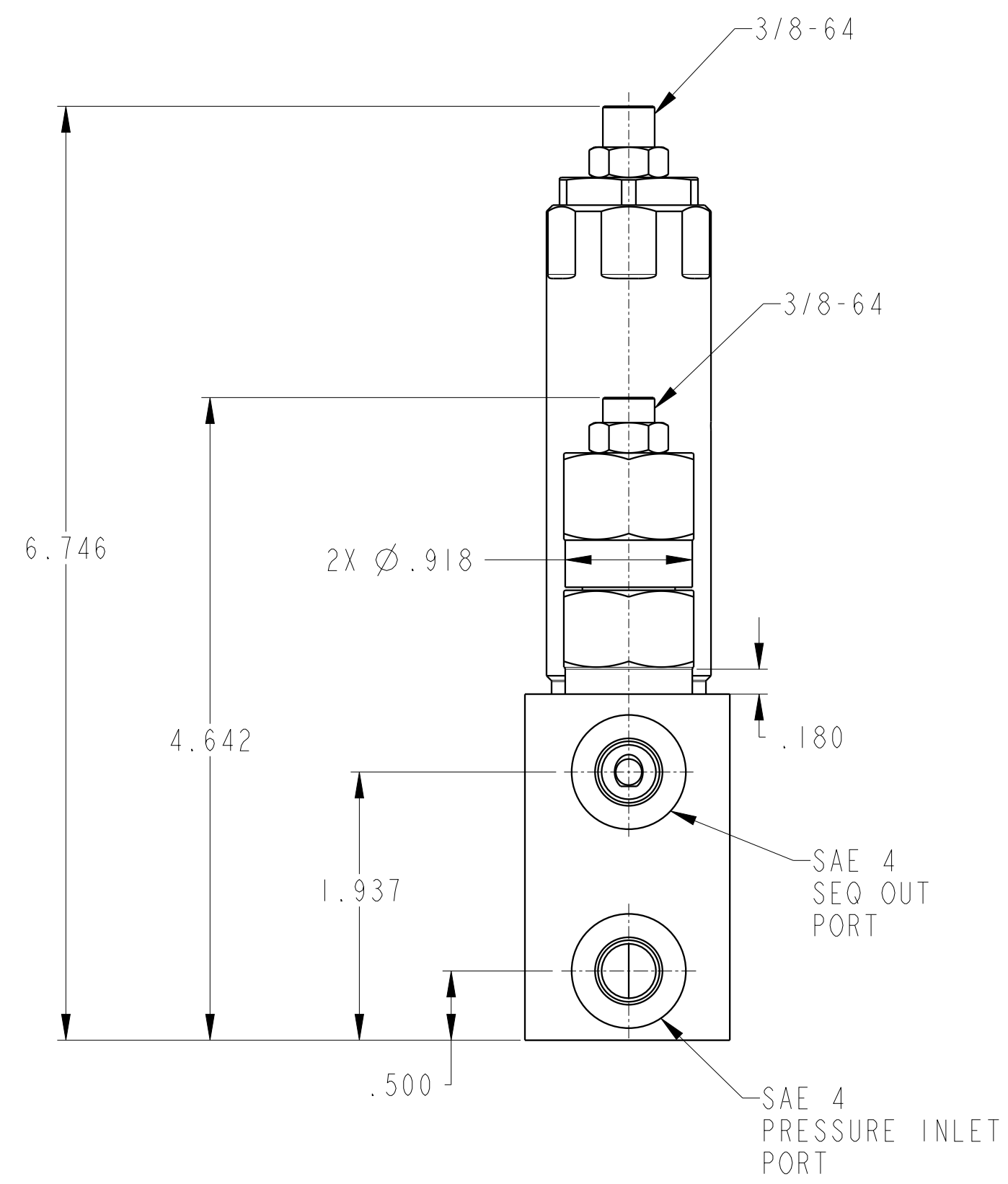
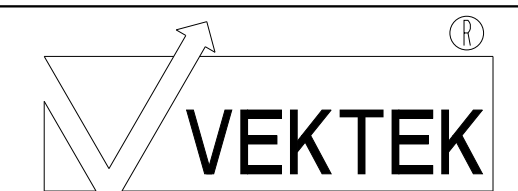


ILC70941001 REV D ECN 4534

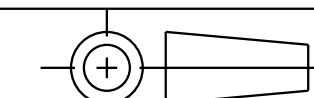


*SAE 2 PORTS are counterbored for o-rings that are used in manifold mounting applications.

CAD CONTROL DRAWING



VEKTEK, INC.
1334 E. SIXTH AVE. P.O. BOX 625
EMPORIA, KS. 66801 U.S.A.



D	4534	RELEASE	ALS	10/5/21	70941001	C	ASSY, VLV, SEQ-LP PRV
REV	IN ACCORDANCE WITH ECN	EFFECTIVE DATE	REVISED BY	DATE	REFERENCE MODEL	REF REV	*****
DRW BY:	DLG	DRAWING STATUS: Released			TOLERANCES DO NOT APPLY	UNITS	SIZE
DATE:	6/6/14	PRODUCTION APPROVED FOR RELEASED STATUS ONLY			DIMENSIONS ARE NOMINAL	mm (inch)	D
					ILC70941001		REV D