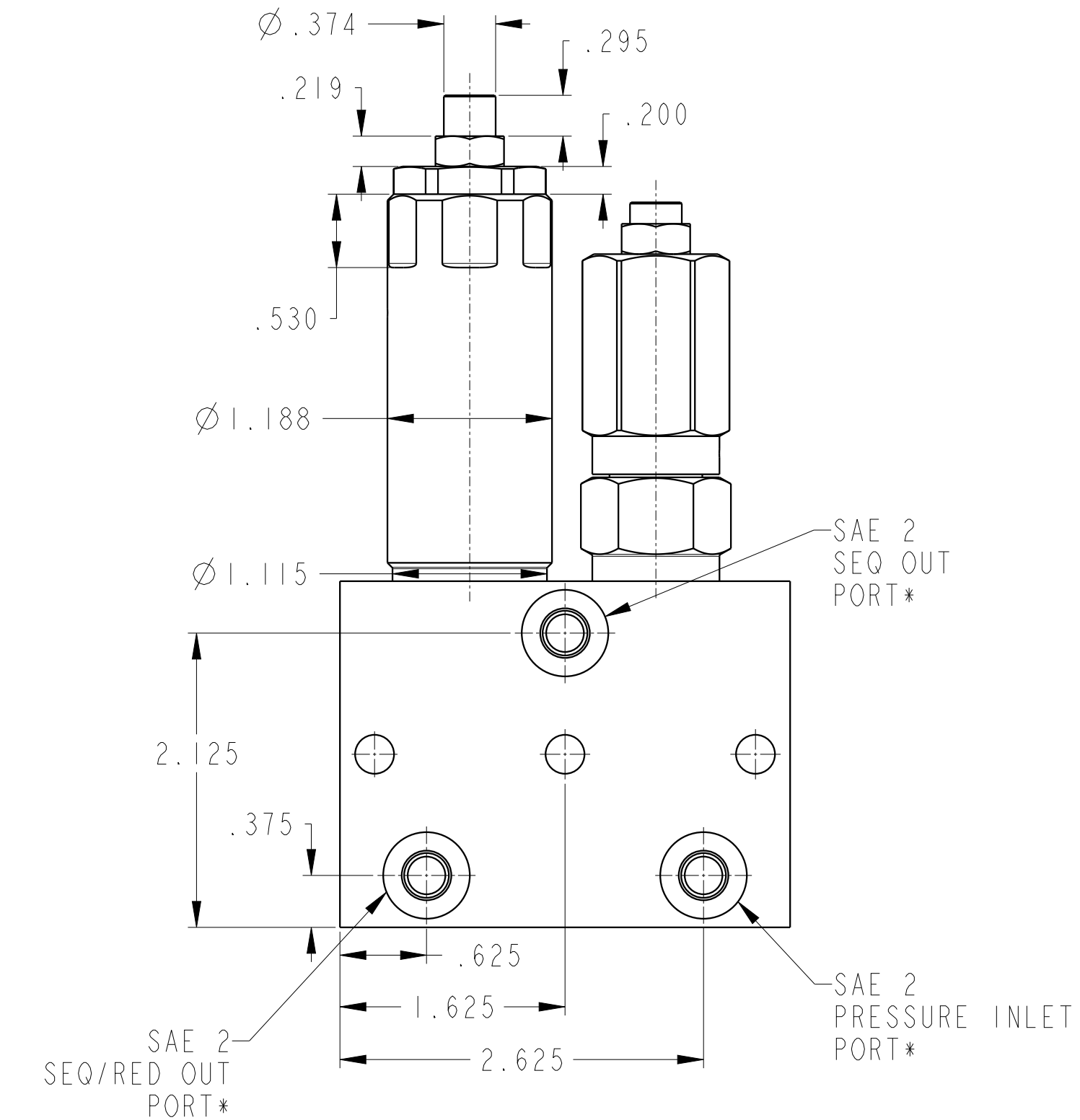
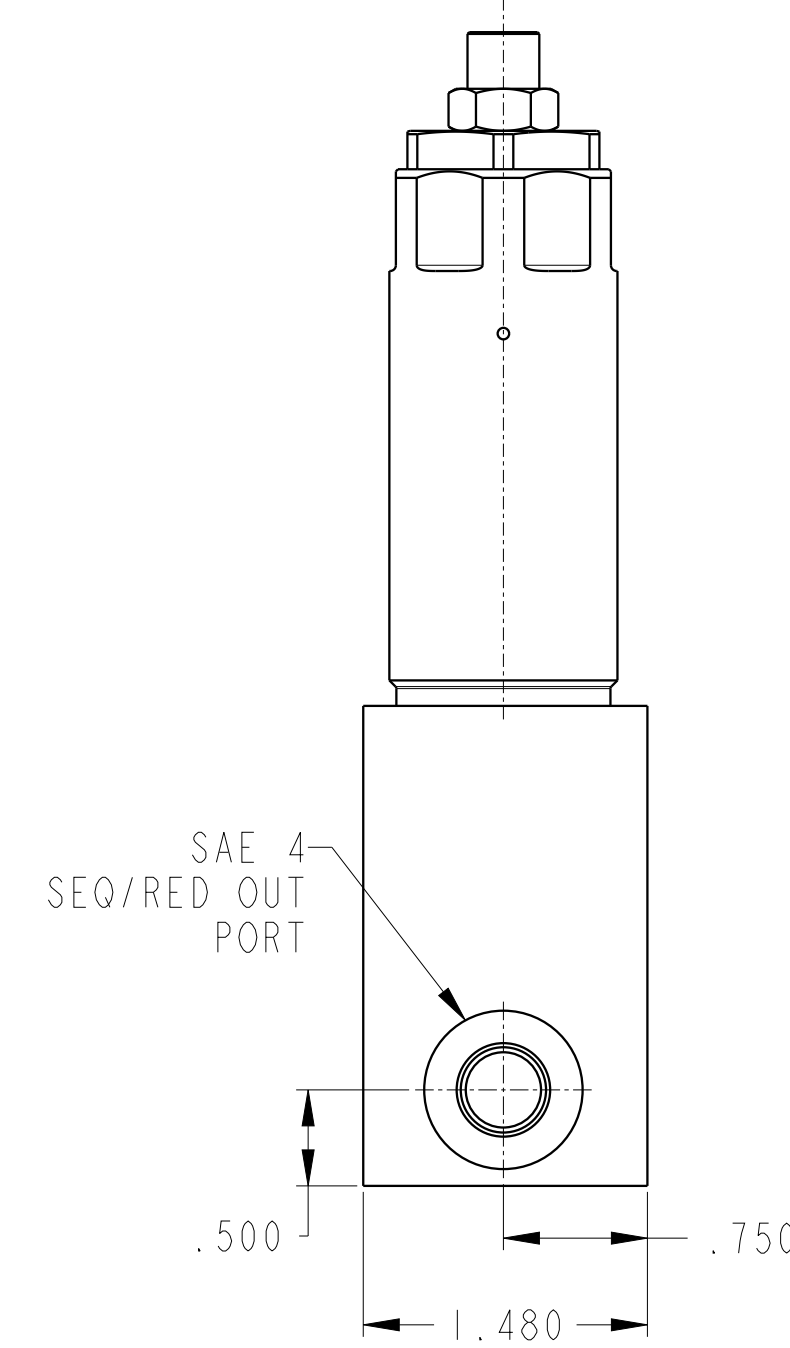
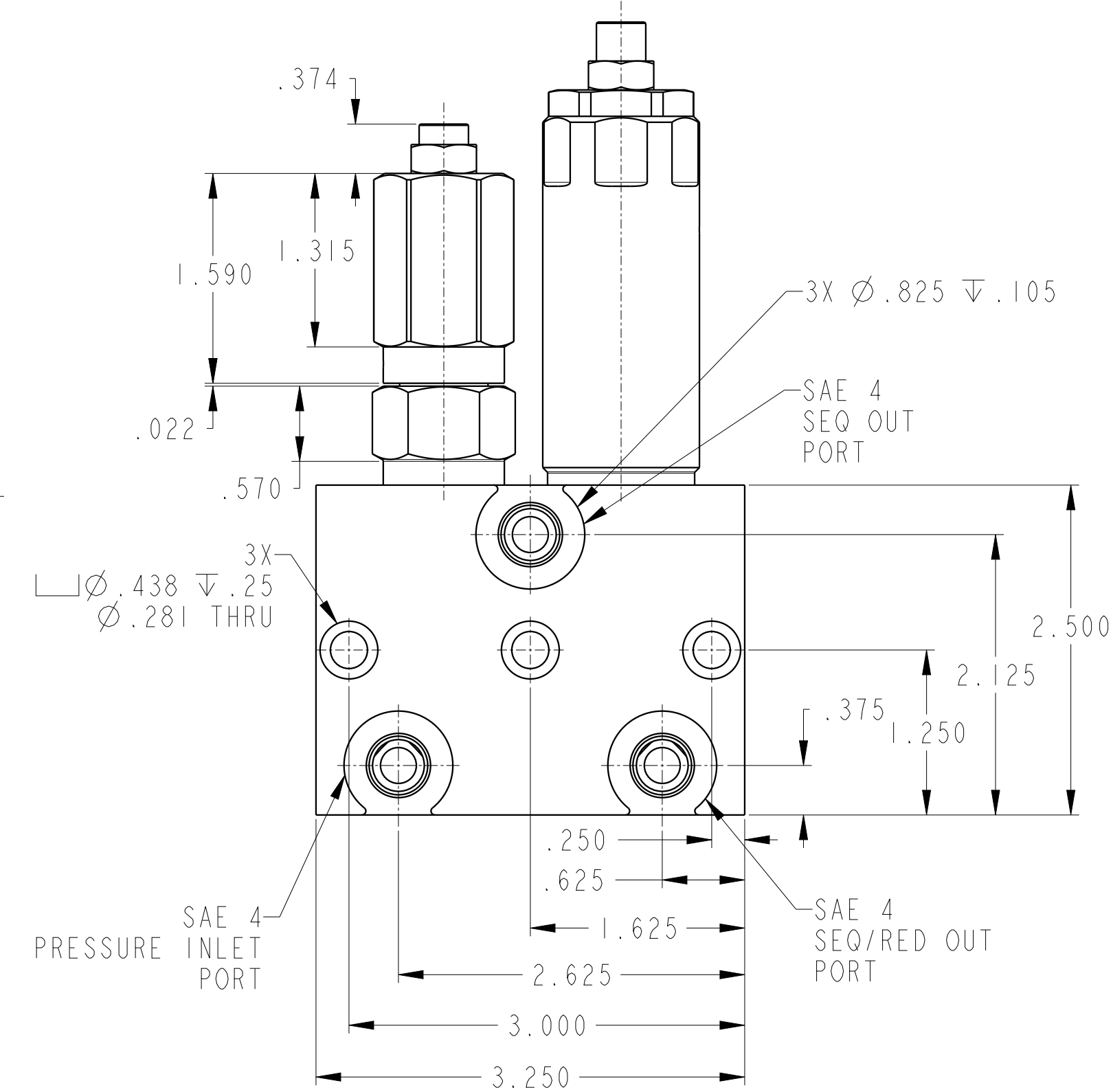
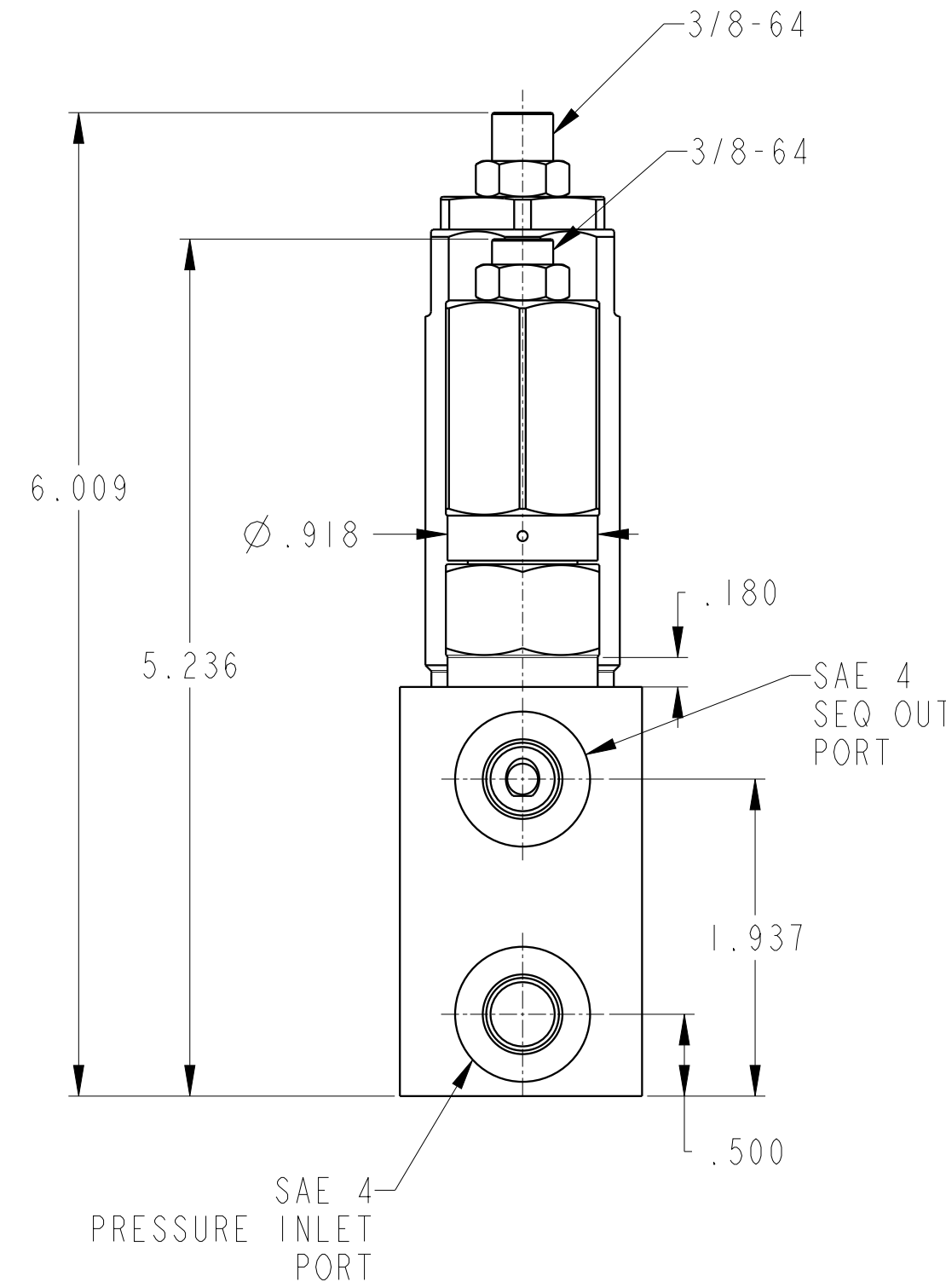
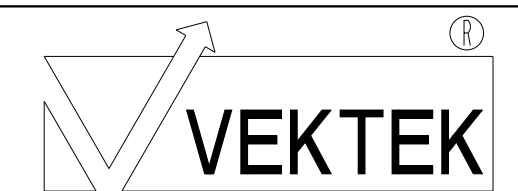


ILC70941002 REV D ECN 4534

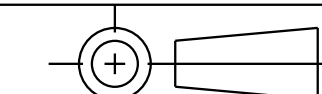


*SAE 2 PORTS are counterbored for o-rings that are used in manifold mounting applications.

CAD CONTROL DRAWING



VEKTEK, INC.
1334 E. SIXTH AVE. P.O. BOX 625
EMPORIA, KS. 66801 U.S.A.



D	4534	RELEASE	ALS	10/5/21
REV	IN ACCORDANCE WITH ECN	EFFECTIVE DATE	REVISED BY	DATE
DRW BY:	DLG	DRAWING STATUS: Released		
DATE:	6/9/14	PRODUCTION APPROVED FOR RELEASED STATUS ONLY		

70941002	D	ASSY, VLV, LP, SEQ-PRV
REFERENCE MODEL	REF REV	*****
TOLERANCES DO NOT APPLY		SIZE
DIMENSIONS ARE NOMINAL		D

ILC70941002	REV D
FORM FEG036, Rev. B	