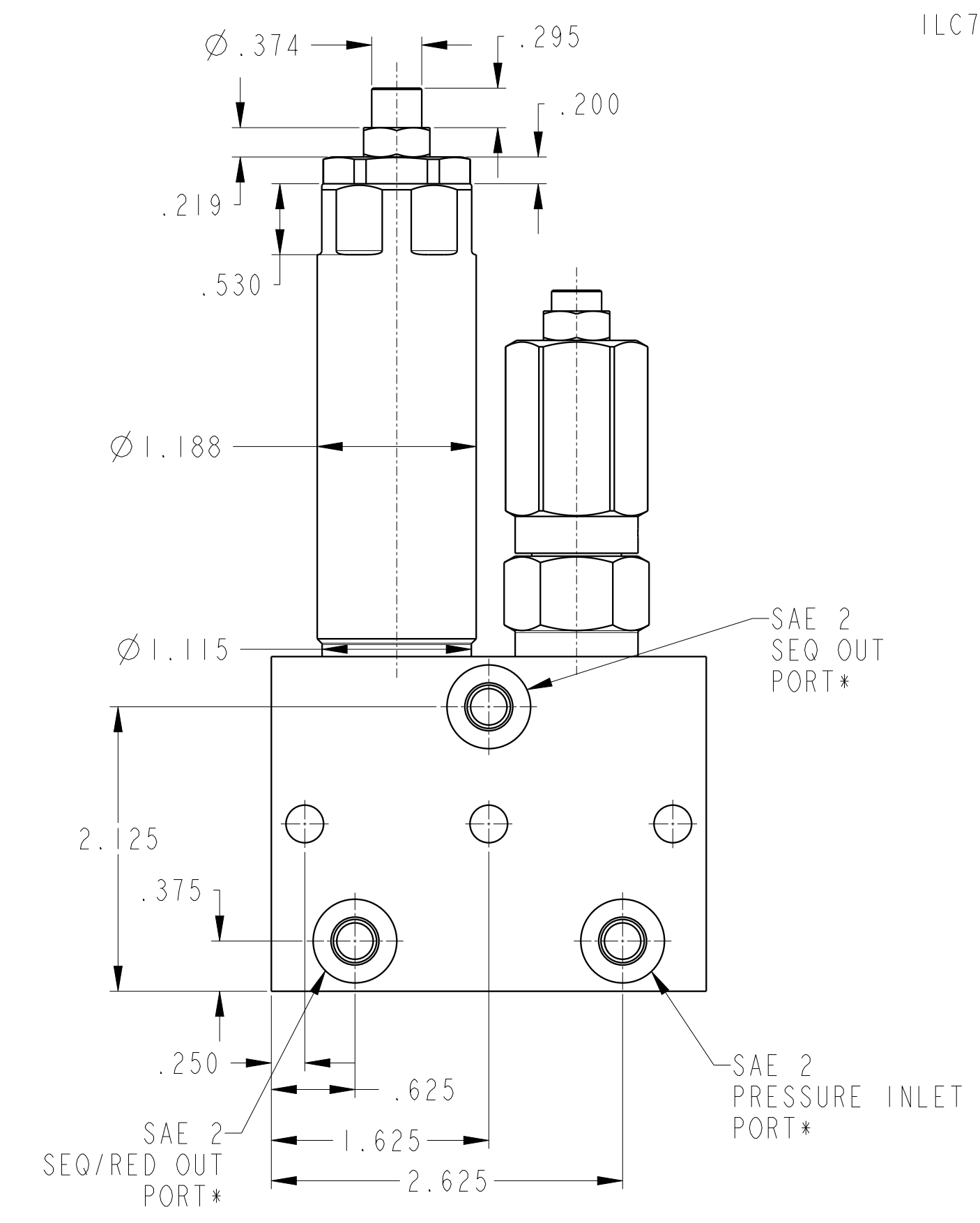
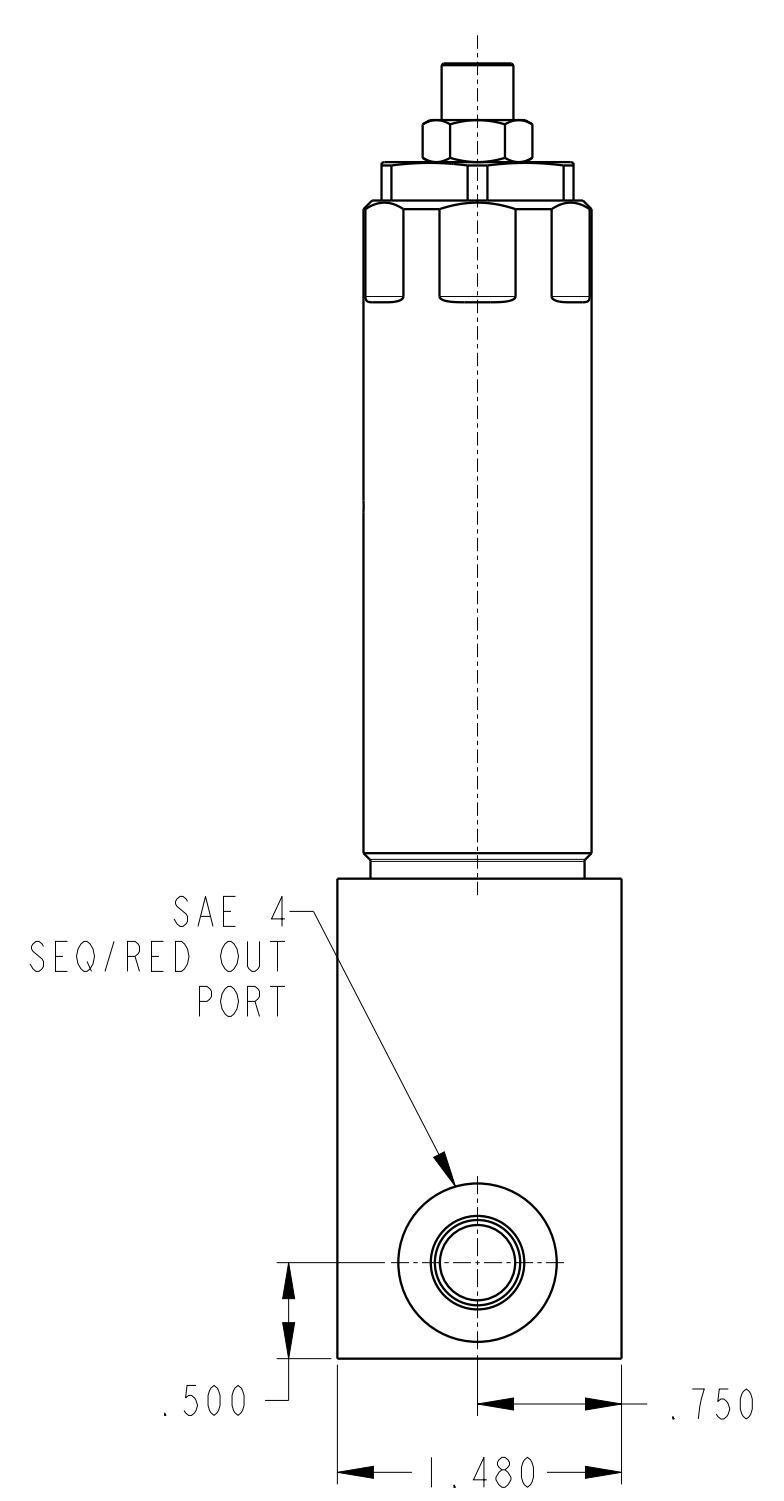
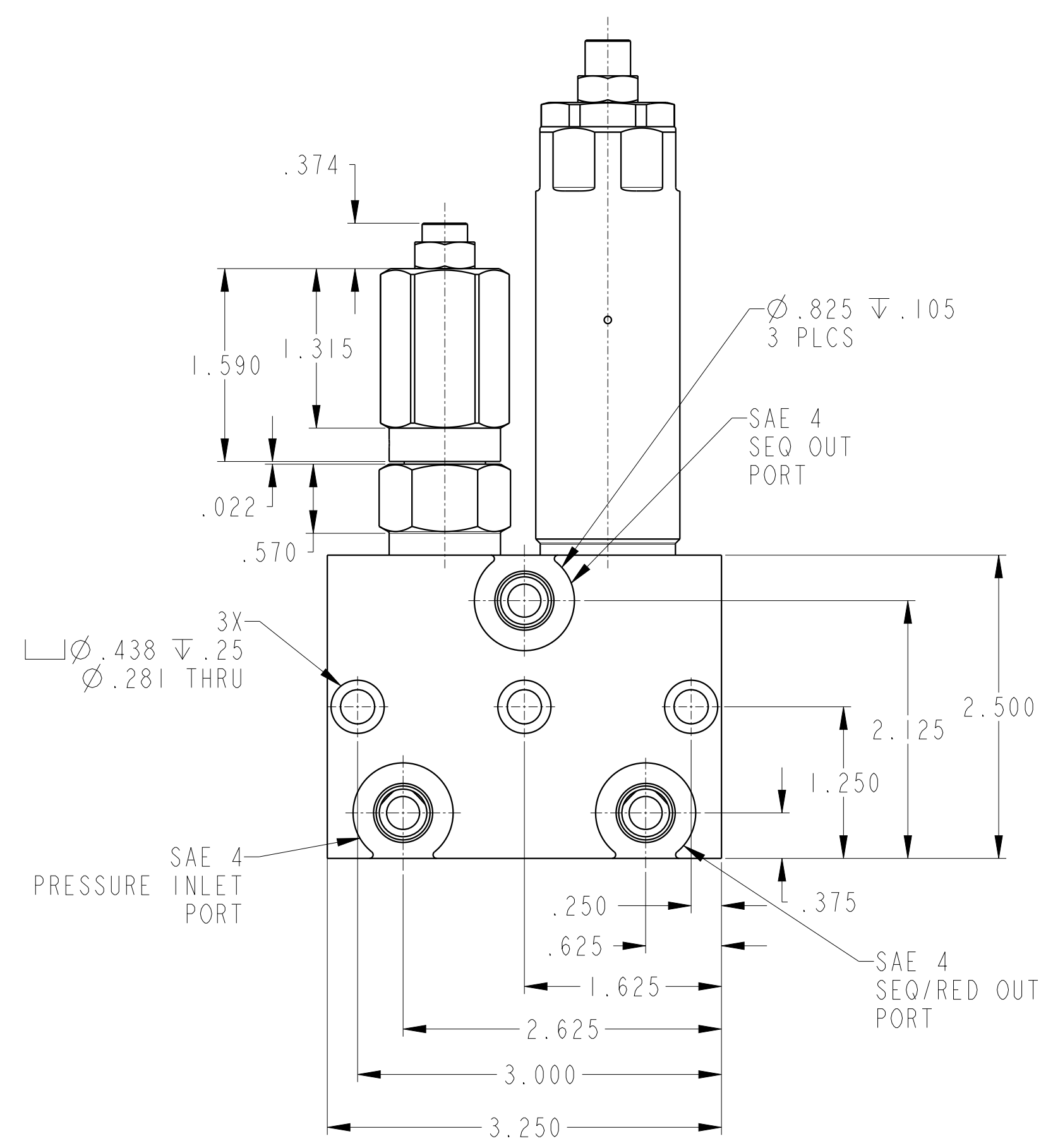
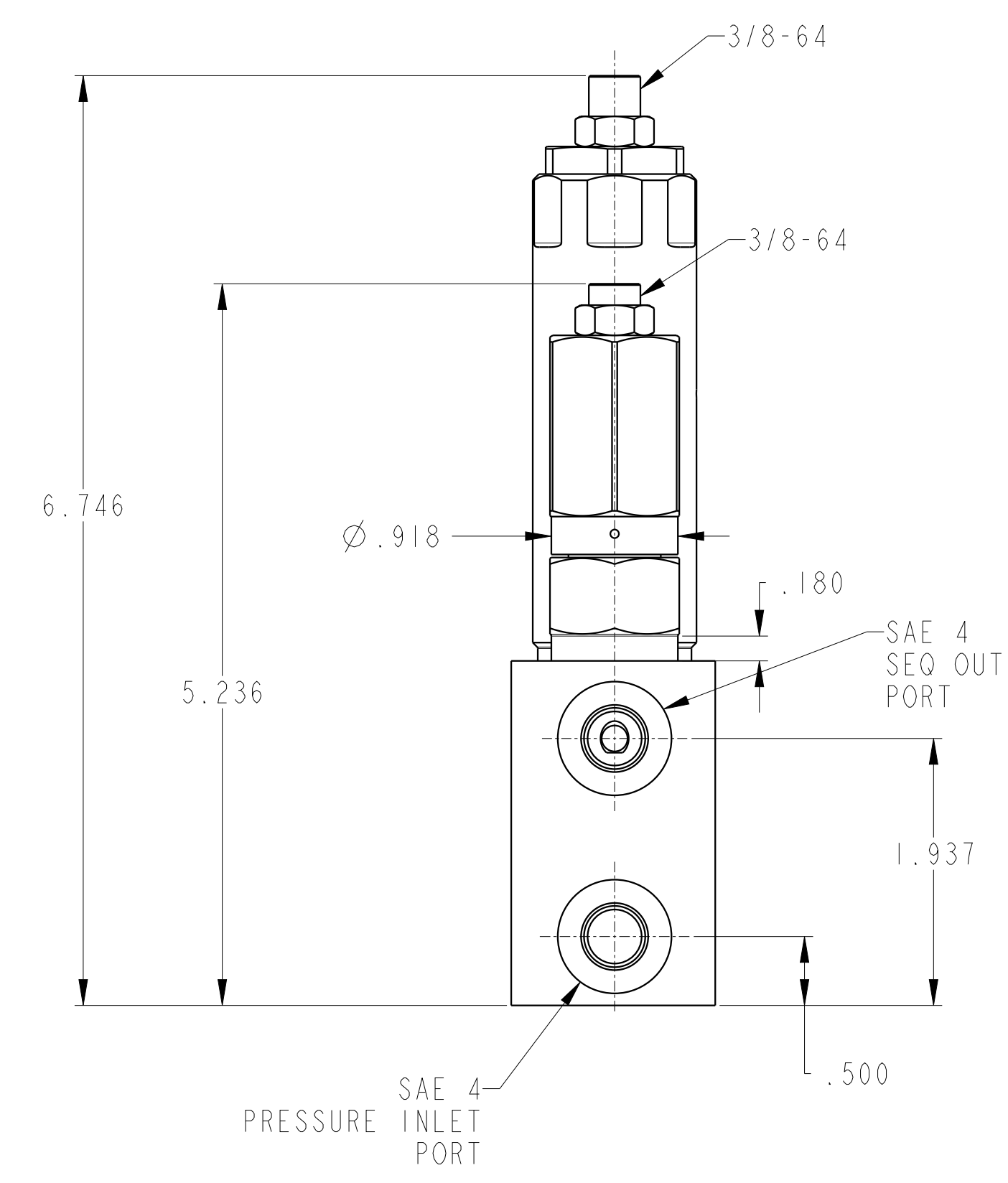
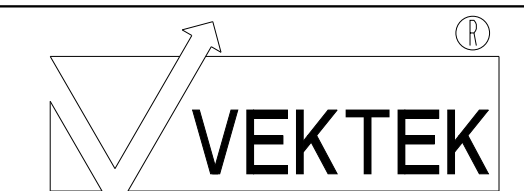


ILC70941003 REV D ECN 4534



*SAE 2 PORTS are counterbored for o-rings that are used in manifold mounting applications.

CAD CONTROL DRAWING



VEKTEK, INC.
1334 E. SIXTH AVE. P.O. BOX 625
EMPORIA, KS. 66801 U.S.A.

D	4534	RELEASE	ALS	10/5/21	70941003	C	ASSY, VLV, LP SEQ-LP PRV
REV	IN ACCORDANCE WITH ECN	EFFECTIVE DATE	REVISED BY	DATE	REFERENCE MODEL	REF REV	*****
DRW BY:	DLG	DRAWING STATUS: Released			TOLERANCES DO NOT APPLY		SIZE
DATE:	6/9/14	PRODUCTION APPROVED FOR RELEASED STATUS ONLY			DIMENSIONS ARE NOMINAL		D
							ILC70941003
							FORM FEG036, Rev. B