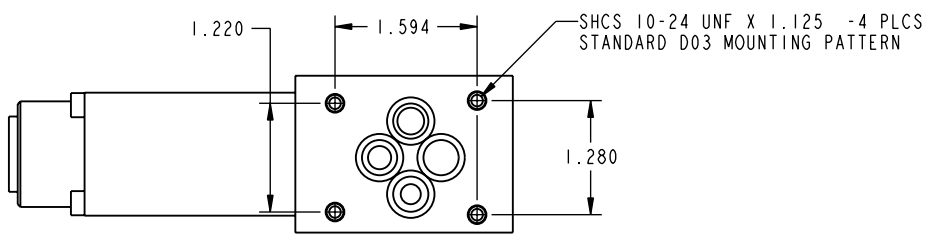
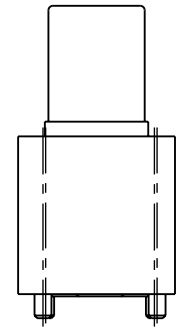
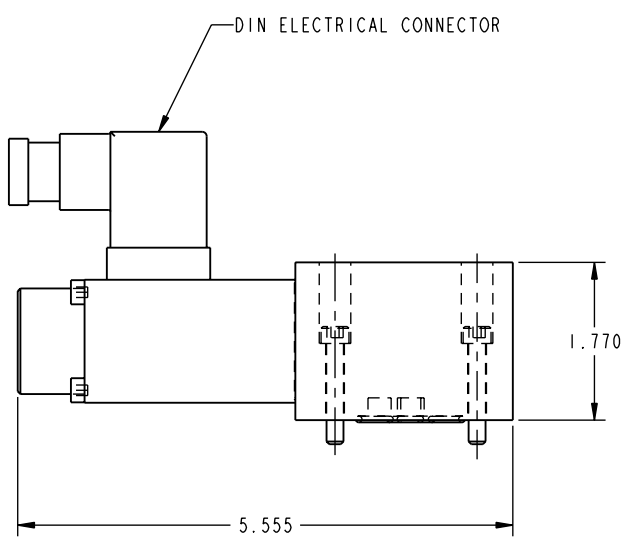
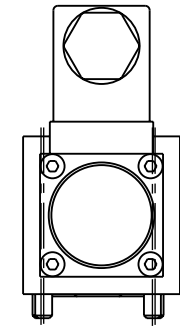
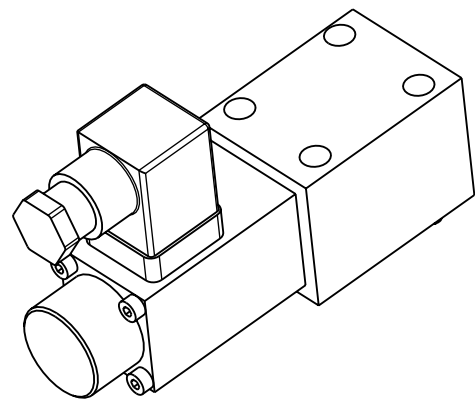
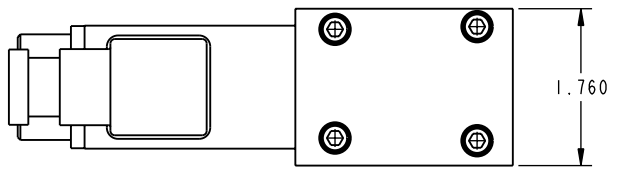


ILC71112254 REV B ECN 2366



**CAD CONTROL
DRAWING**



VEKTEK, INC.
1334 E. SIXTH AVE. P.O. BOX 625
EMPORIA, KS. 66801 U.S.A.

REV	B	2366	RELEASE	JDW	2/8/12	71112254	C	VLV,DIR,24V,2/3,NO
REV	IN ACCORDANCE WITH ECN		EFFECTIVE DATE	REVISED BY	DATE	REFERENCE MODEL	REF REV	
DRW BY:	K. ROEMER		DRAWING STATUS: Released			TOLERANCES DO NOT APPLY DIMENSIONS ARE NOMINAL		SIZE D
DATE:	05-04-05		PRODUCTION APPROVED FOR RELEASED STATUS ONLY					ILC71112254 REV B

FORM FEG036, Rev. A