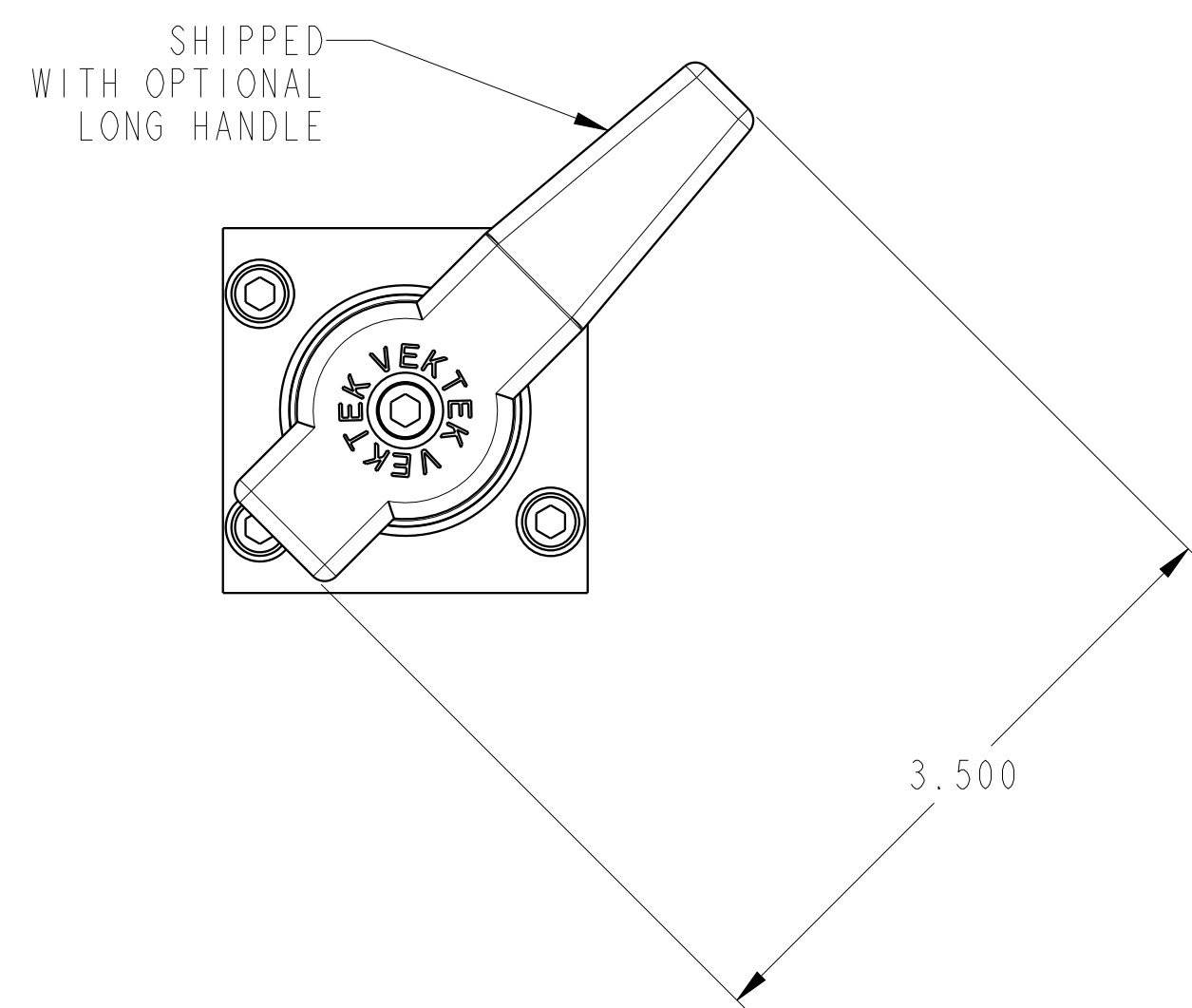
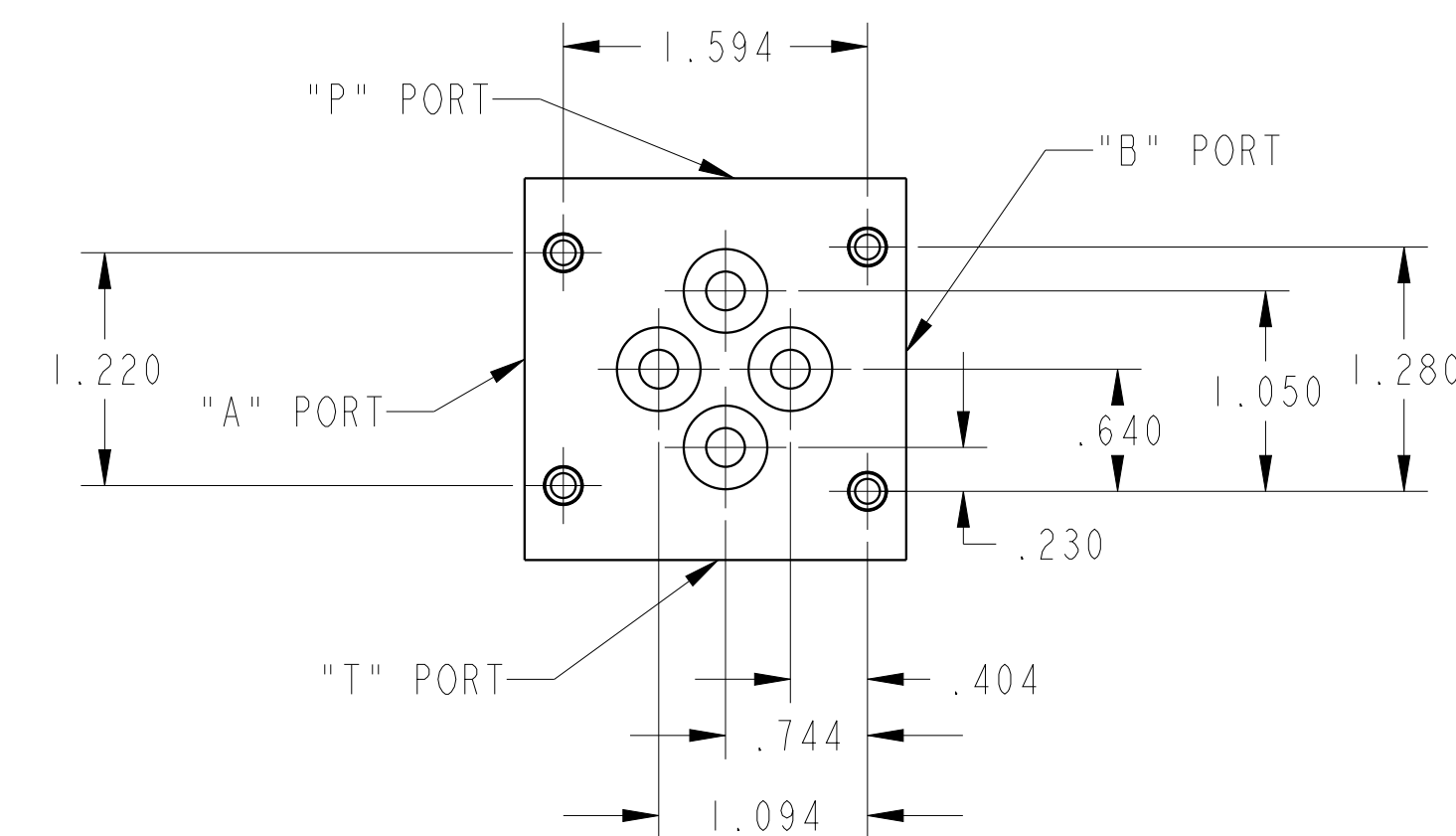
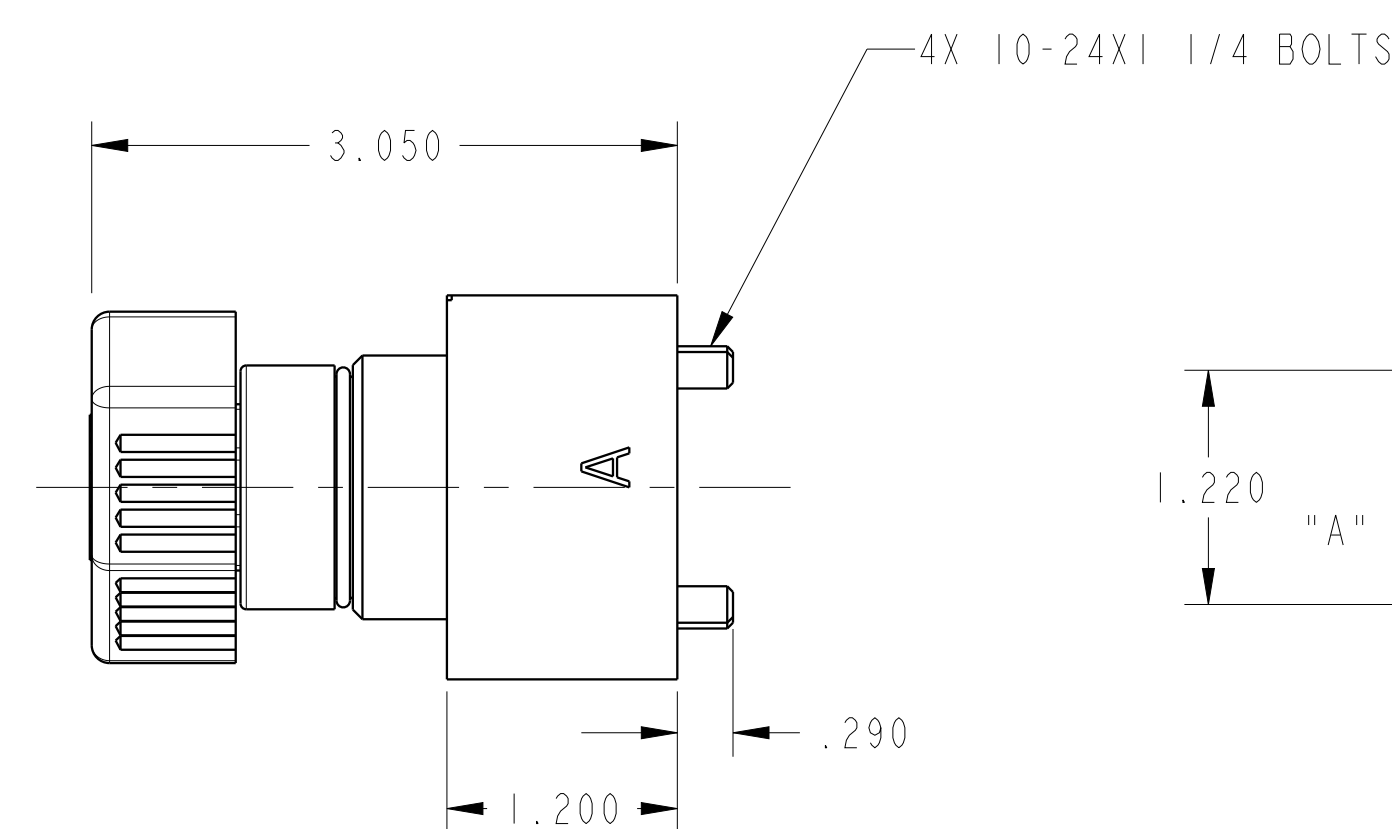
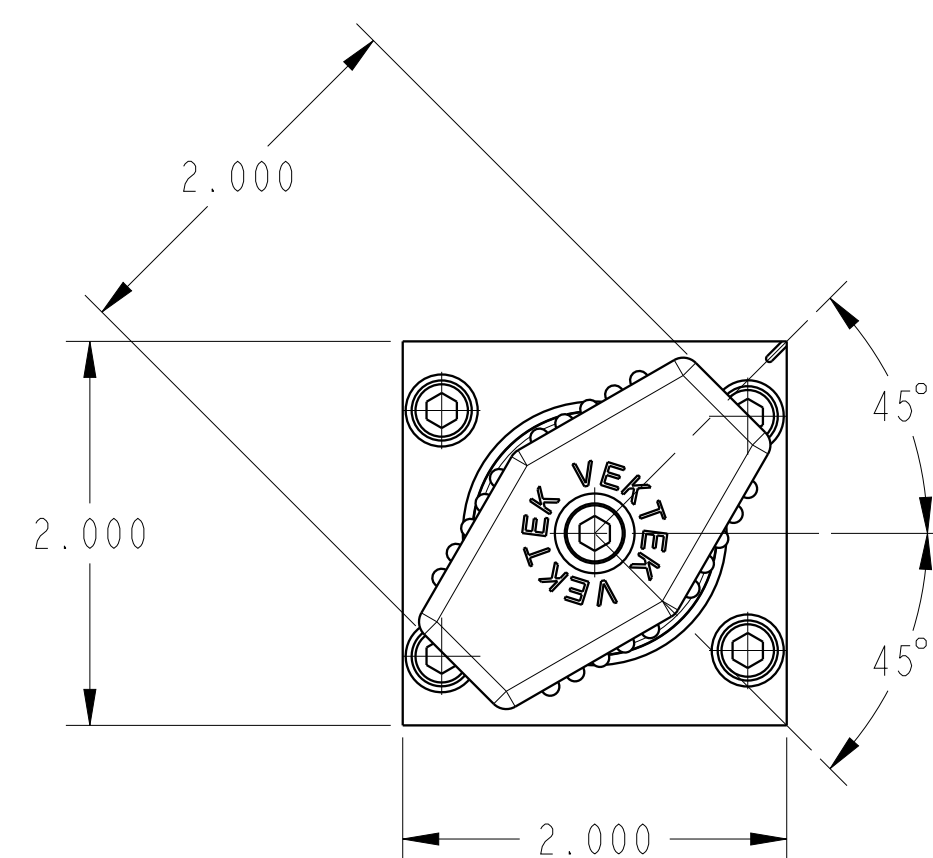
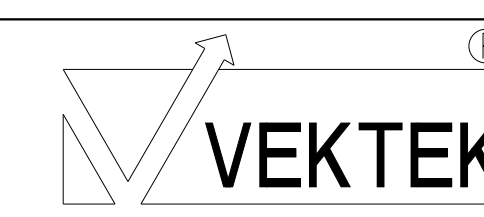


ILC71147402 REV B ECN 4154



CAD CONTROL  
DRAWING



VEKTEK, INC.  
1334 E. SIXTH AVE. P.O. BOX 625  
EMPORIA, KS. 66801 U.S.A.

|                |                        |  |            |         |                         |         |                                    |
|----------------|------------------------|--|------------|---------|-------------------------|---------|------------------------------------|
| B              | 4154                   | RELEASE                                      | NPETERS    | 8/28/20 | 71147402                | B       | ASSY, VALVE, D03, MANUAL, 4/3, PBC |
| REV            | IN ACCORDANCE WITH ECN | EFFECTIVE DATE                               | REVISED BY | DATE    | REFERENCE MODEL         | REF REV | *****                              |
| DRW BY: ALS    |                        | DRAWING STATUS: <b>Released</b>              |            |         | TOLERANCES DO NOT APPLY |         | SIZE                               |
| DATE: 05/10/19 |                        | PRODUCTION APPROVED FOR RELEASED STATUS ONLY |            |         | DIMENSIONS ARE NOMINAL  |         | D                                  |
|                |                        |  |            |         | ILC71147402             |         | REV B                              |