

1

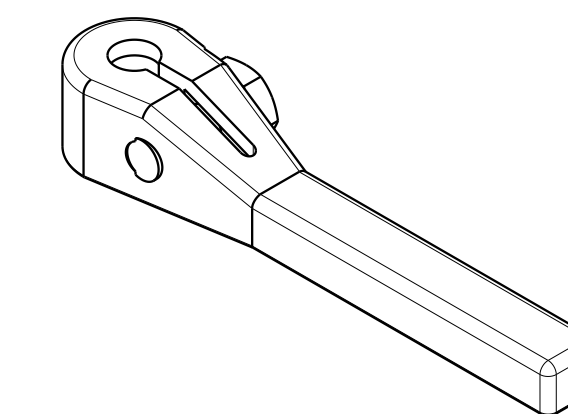
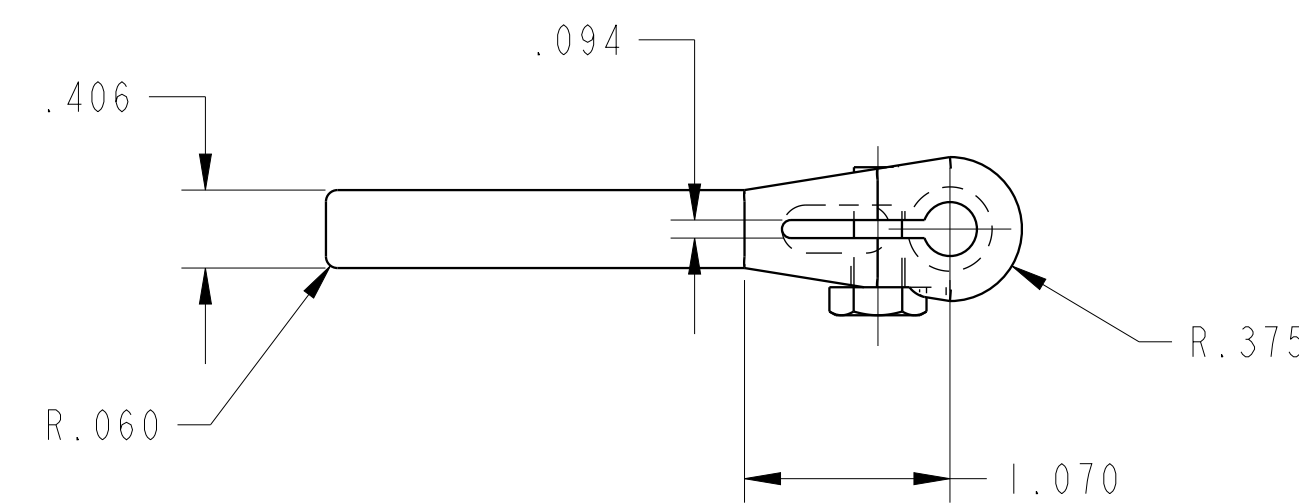
2

3

4

D

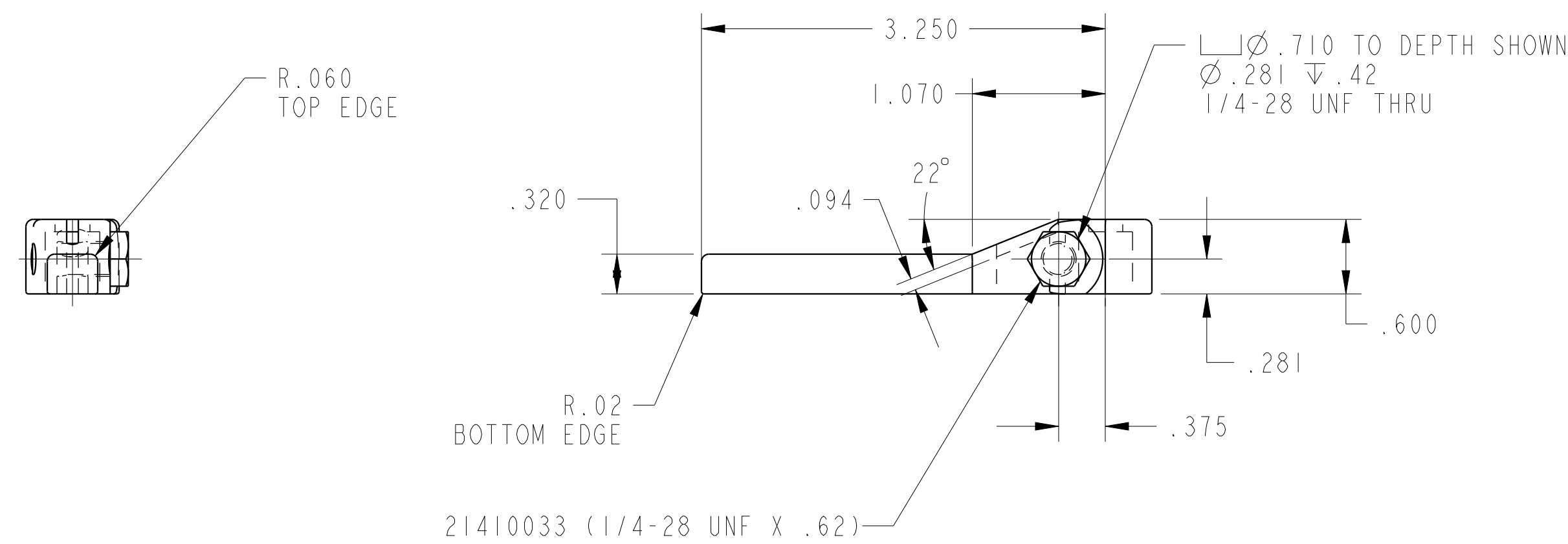
D



ILC91520502 REV B ECN 4064

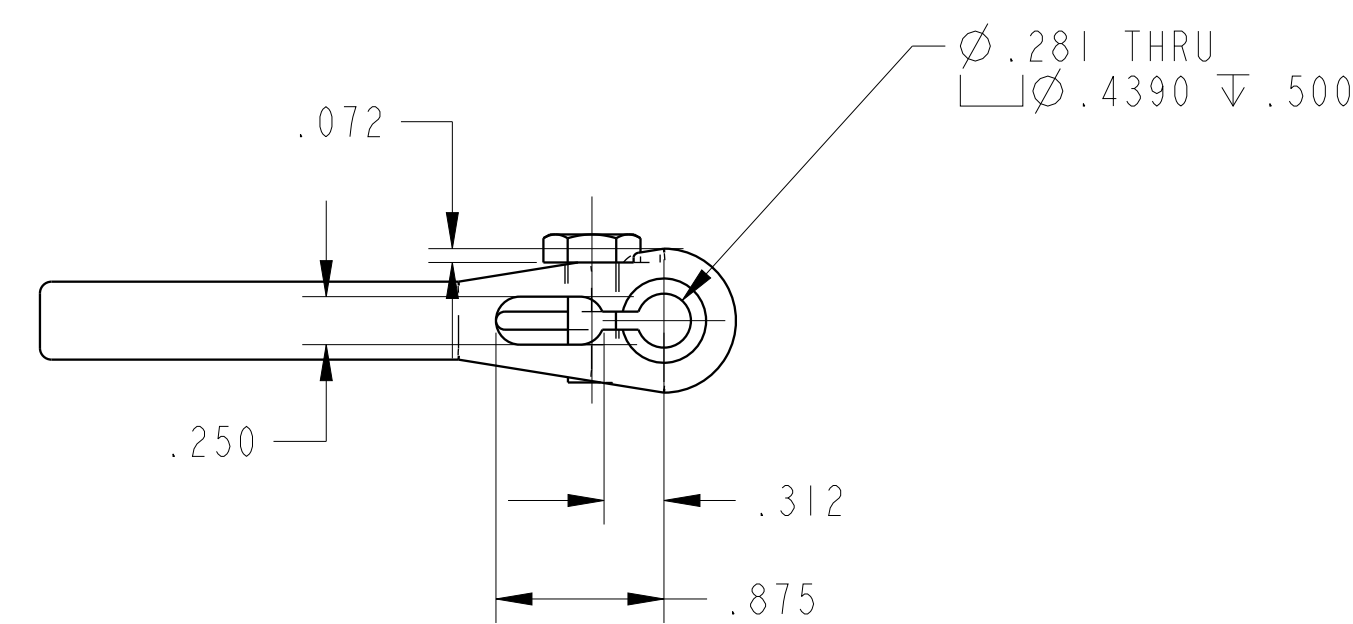
C

C



B

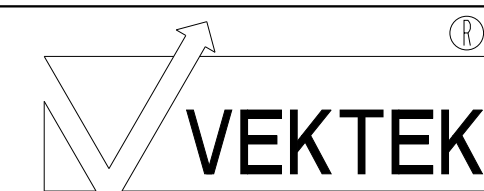
B



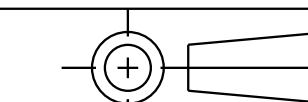
A

A

CAD CONTROL DRAWING



VEKTEK, INC.  
1334 E. SIXTH AVE. P.O. BOX 625  
EMPORIA, KS. 66801 U.S.A.



|         |                        |  |            |        |                         |         |                   |
|---------|------------------------|--|------------|--------|-------------------------|---------|-------------------|
| B       | 4064                   | RELEASE                                      | NPETERS    | 2/3/20 | 91520502                | L       | ARM, SC, EXT, 450 |
| REV     | IN ACCORDANCE WITH ECN | EFFECTIVE DATE                               | REVISED BY | DATE   | REFERENCE MODEL         | REF REV | *****             |
| DRW BY: | K. ROEMER              | DRAWING STATUS: Released                     |            |        | TOLERANCES DO NOT APPLY |         | SIZE              |
| DATE:   | 07-23-02               | PRODUCTION APPROVED FOR RELEASED STATUS ONLY |            |        | DIMENSIONS ARE NOMINAL  |         | D                 |

ILC91520502 REV B

1

2

3

4

SHEET 1 OF 1