

1

2

3

4

D

D

C

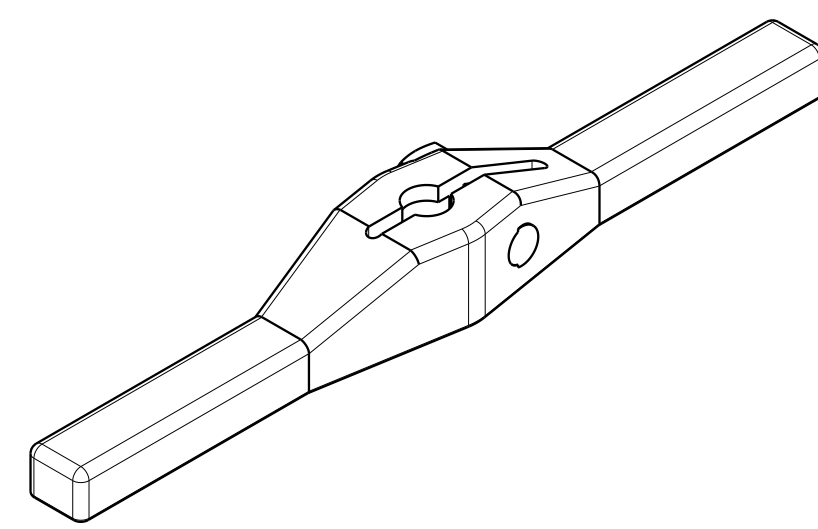
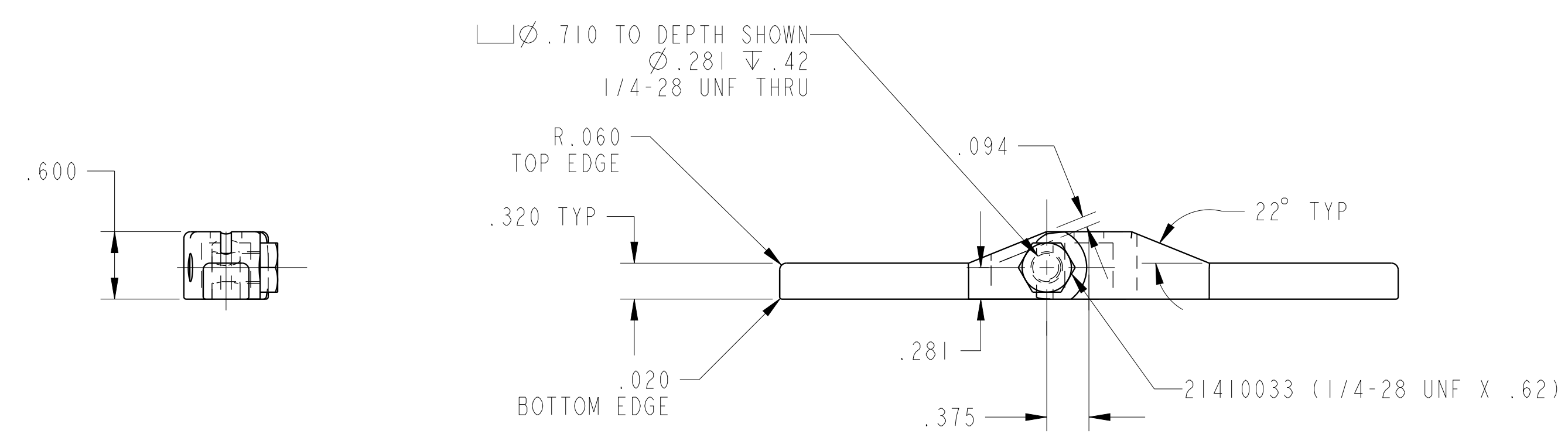
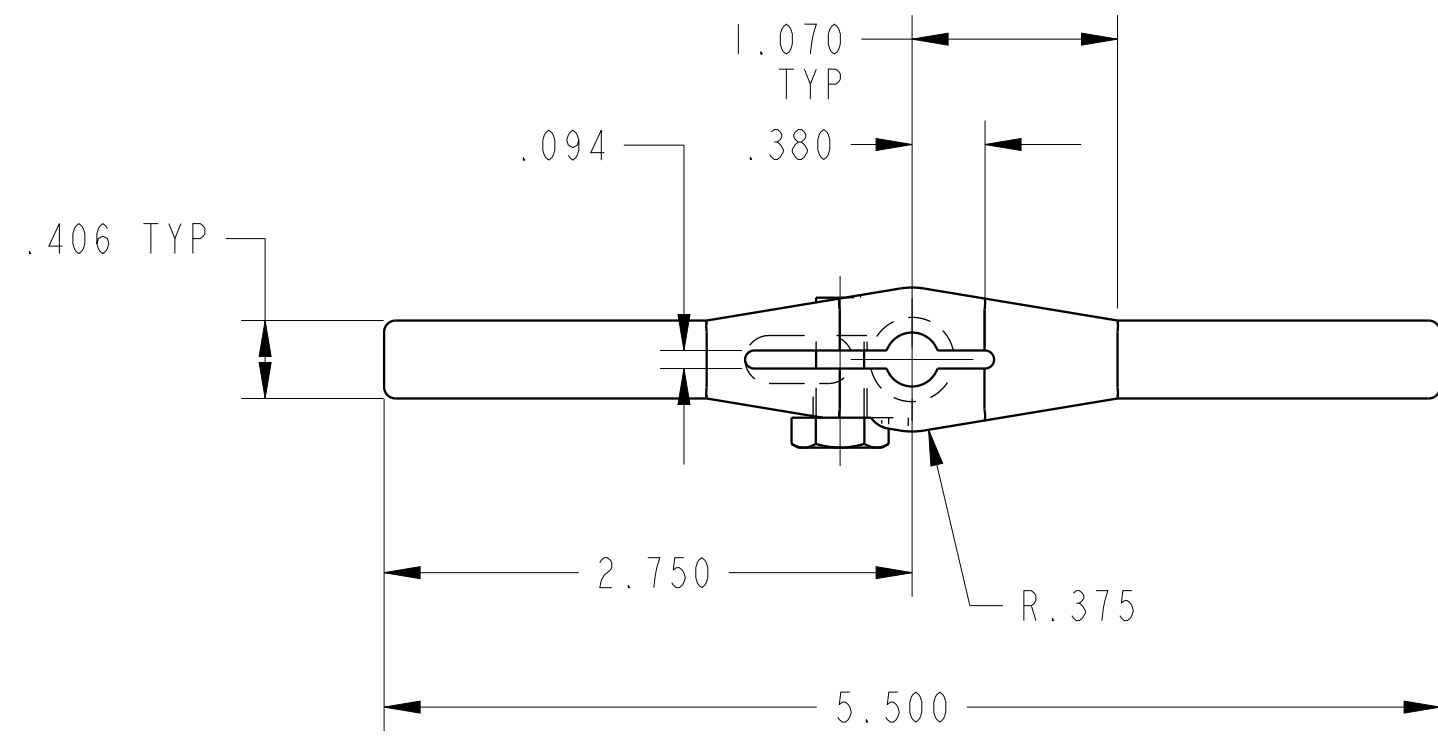
C

B

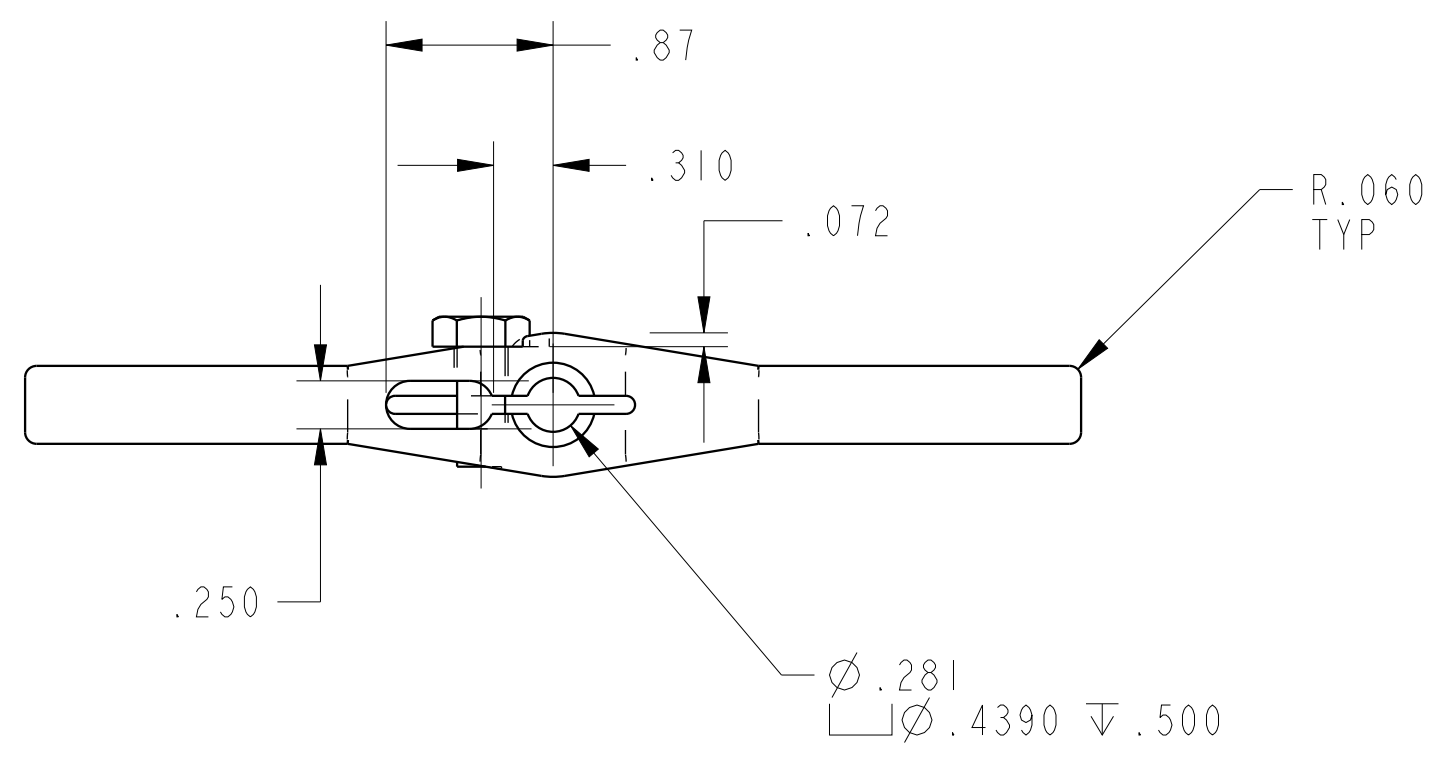
B

A

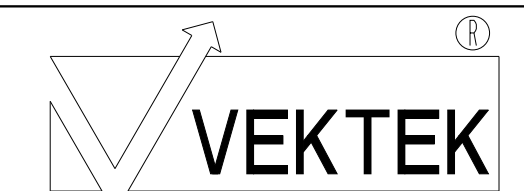
A



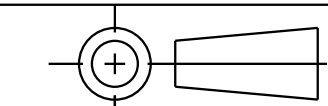
ILC91520507 REV B ECN 4064



CAD CONTROL DRAWING



VEKTEK, INC.  
1334 E. SIXTH AVE. P.O. BOX 625  
EMPORIA, KS. 66801 U.S.A.



B	4064	RELEASE	NPETERS	2/4/20	91520507	K	ARM, SC, DBL, 450
REV	IN ACCORDANCE WITH ECN	EFFECTIVE DATE	REVISED BY	DATE	REFERENCE MODEL	REF REV	---
DRW BY:	DRAWING STATUS: <b>Released</b>				TOLERANCES DO NOT APPLY		SIZE
DATE:	PRODUCTION APPROVED FOR RELEASED STATUS ONLY				DIMENSIONS ARE NOMINAL		D ILC91520507 REV B

1

2

3

4

SHEET 1 OF 1