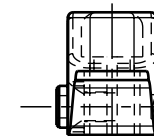
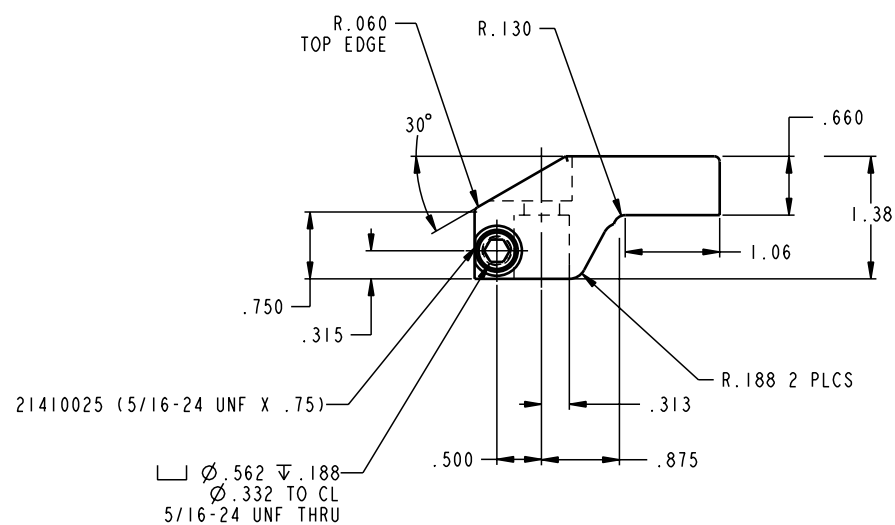
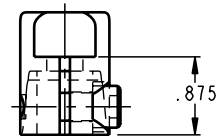


ILC91520906 REV A ECN 739



CAD CONTROL  
DRAWING



VEKTEK, INC.  
1334 E. SIXTH AVE. P.O. BOX 625  
EMPORIA, KS. 66801 U.S.A.

A	739	RELEASE	K. ROEMER	03-18-05	91520906	J	ARM, SC, UPREACH, 1100
REV	IN ACCORDANCE WITH ECN	EFFECTIVE DATE	REVISED BY	DATE	REFERENCE MODEL	REF REV	
DRW BY:	K. ROEMER			DRAWING STATUS: <b>Released</b>			
DATE:	07-24-02			PRODUCTION APPROVED FOR RELEASED STATUS ONLY			
					TOLERANCES DO NOT APPLY DIMENSIONS ARE NOMINAL		SIZE D
					ILC91520906		REV A

FORM FEG036, Rev. A

SHEET 1 OF 1