

1

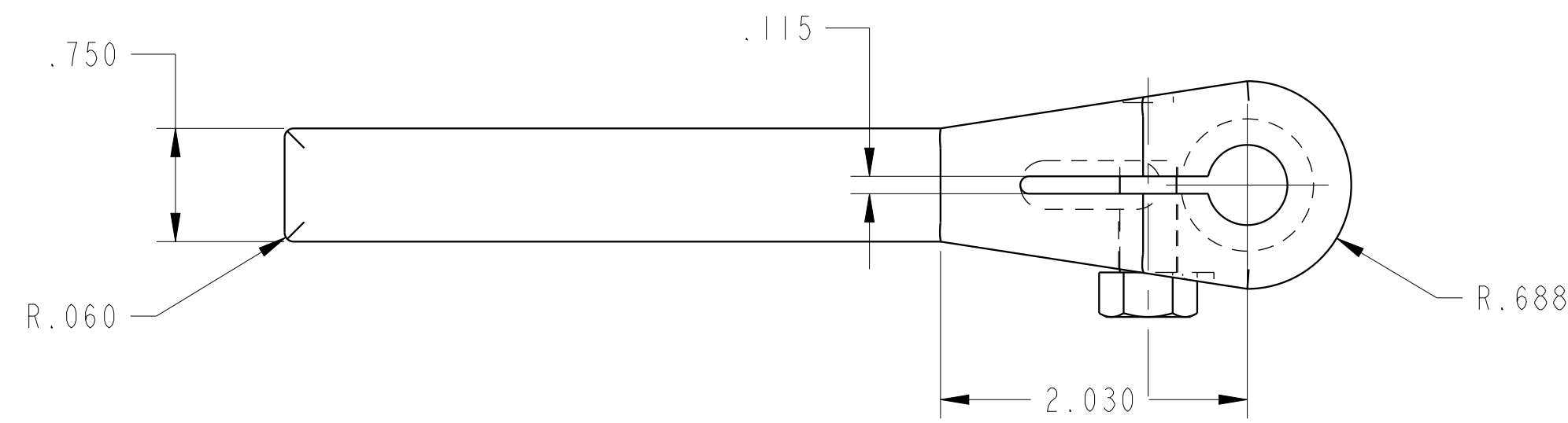
2

3

4

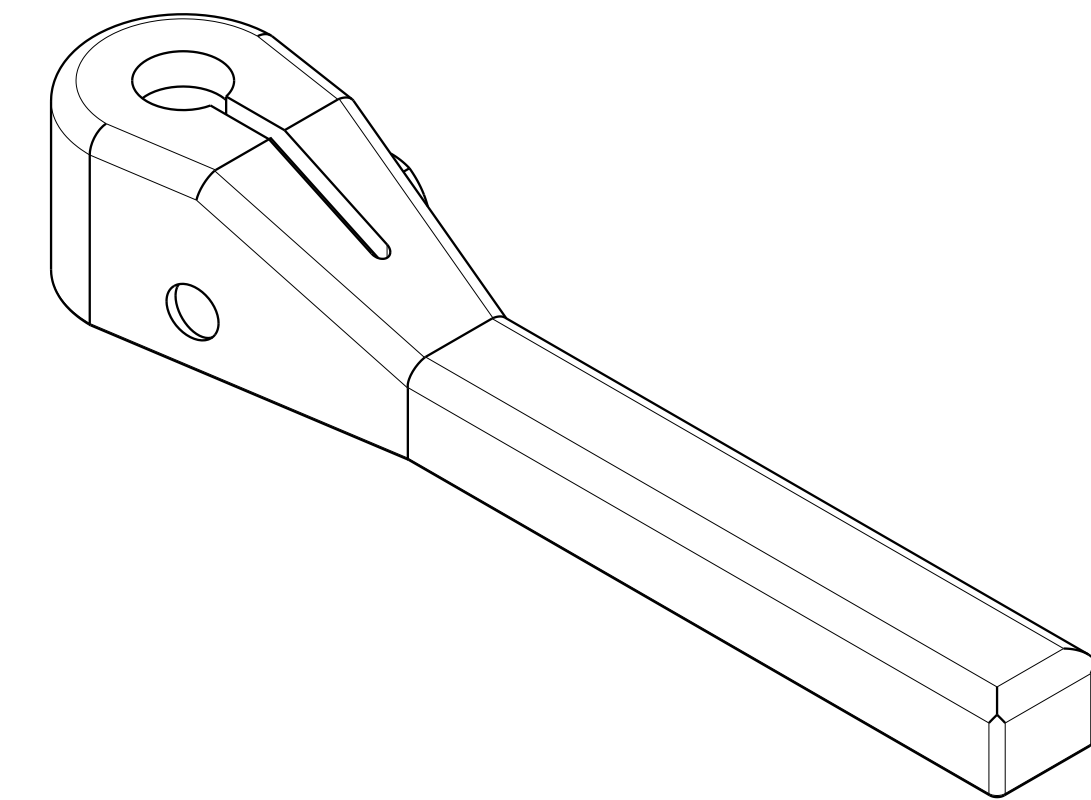
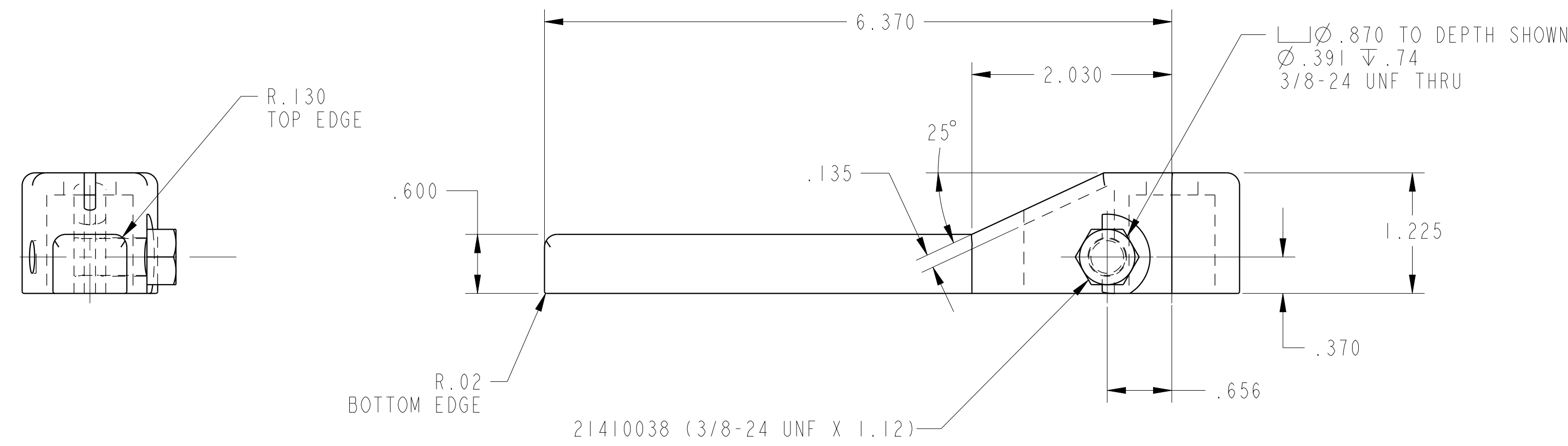
D

D



C

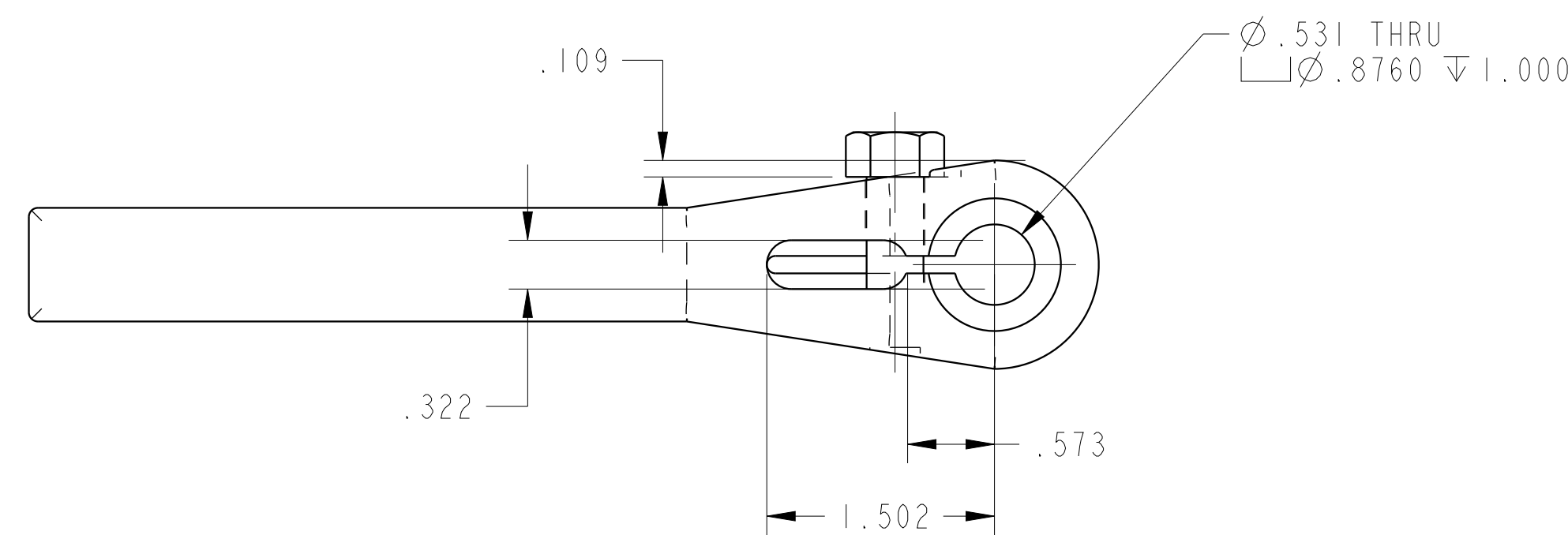
C



ILC91521302 REV B ECN 4064

B

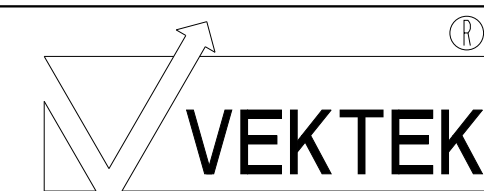
B



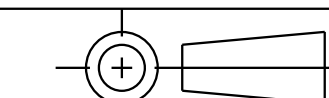
A

A

CAD CONTROL DRAWING



VEKTEK, INC.
1334 E. SIXTH AVE. P.O. BOX 625
EMPORIA, KS. 66801 U.S.A.



B	4064	RELEASE	NPETERS	2/3/20
REV	IN ACCORDANCE WITH ECN	EFFECTIVE DATE	REVISED BY	DATE
DRW BY:	K. ROEMER	DRAWING STATUS: Released		
DATE:	07-23-02	PRODUCTION APPROVED FOR RELEASED STATUS ONLY		

TOLERANCES DO NOT APPLY
DIMENSIONS ARE NOMINAL

SIZE D ILC91521302 REV B

1

2

3

4

SHEET 1 OF 1