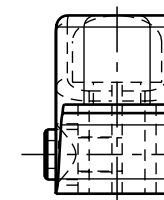
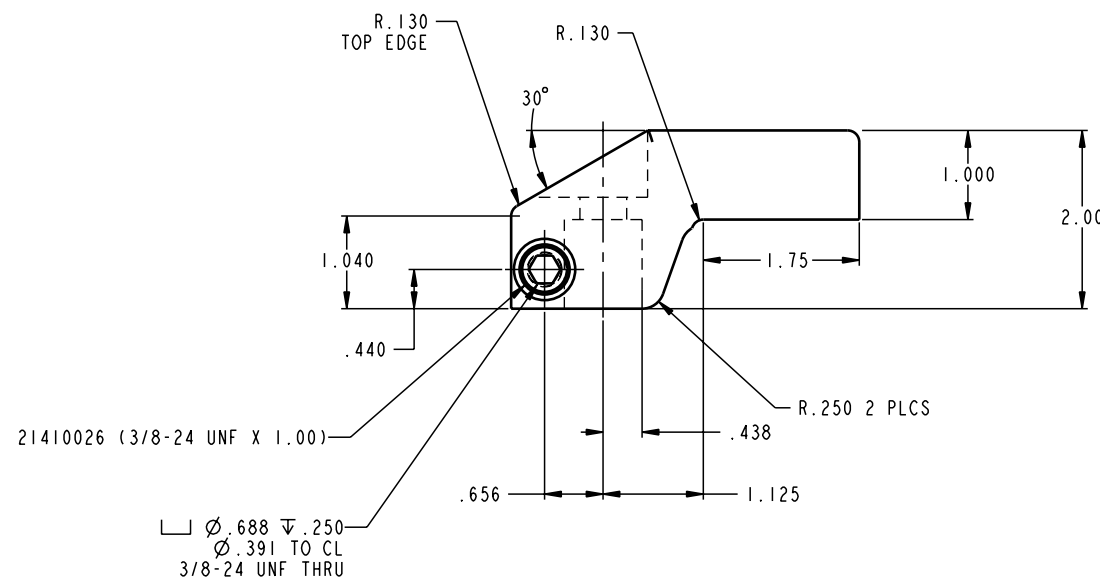
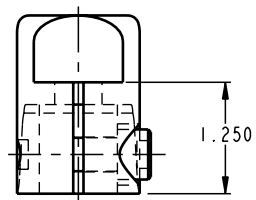


ILC91521306 REV A ECN 739



CAD CONTROL
DRAWING



VEKTEK, INC.
1334 E. SIXTH AVE. P.O. BOX 625
EMPORIA, KS. 66801 U.S.A.

A	739	RELEASE	K. ROEMER	03-18-05	91521306	L	ARM, SC, UPREACH, 2600
REV	IN ACCORDANCE WITH ECN	EFFECTIVE DATE	REVISED BY	DATE	REFERENCE MODEL	REF REV	
DRW BY:	K. ROEMER	DRAWING STATUS: Released			TOLERANCES DO NOT APPLY DIMENSIONS ARE NOMINAL		SIZE D
DATE:	07-24-02	PRODUCTION APPROVED FOR RELEASED STATUS ONLY			ILC91521306		REV A

FORM FEG036, Rev. A

SHEET 1 OF 1