

1

2

3

4

D

D

C

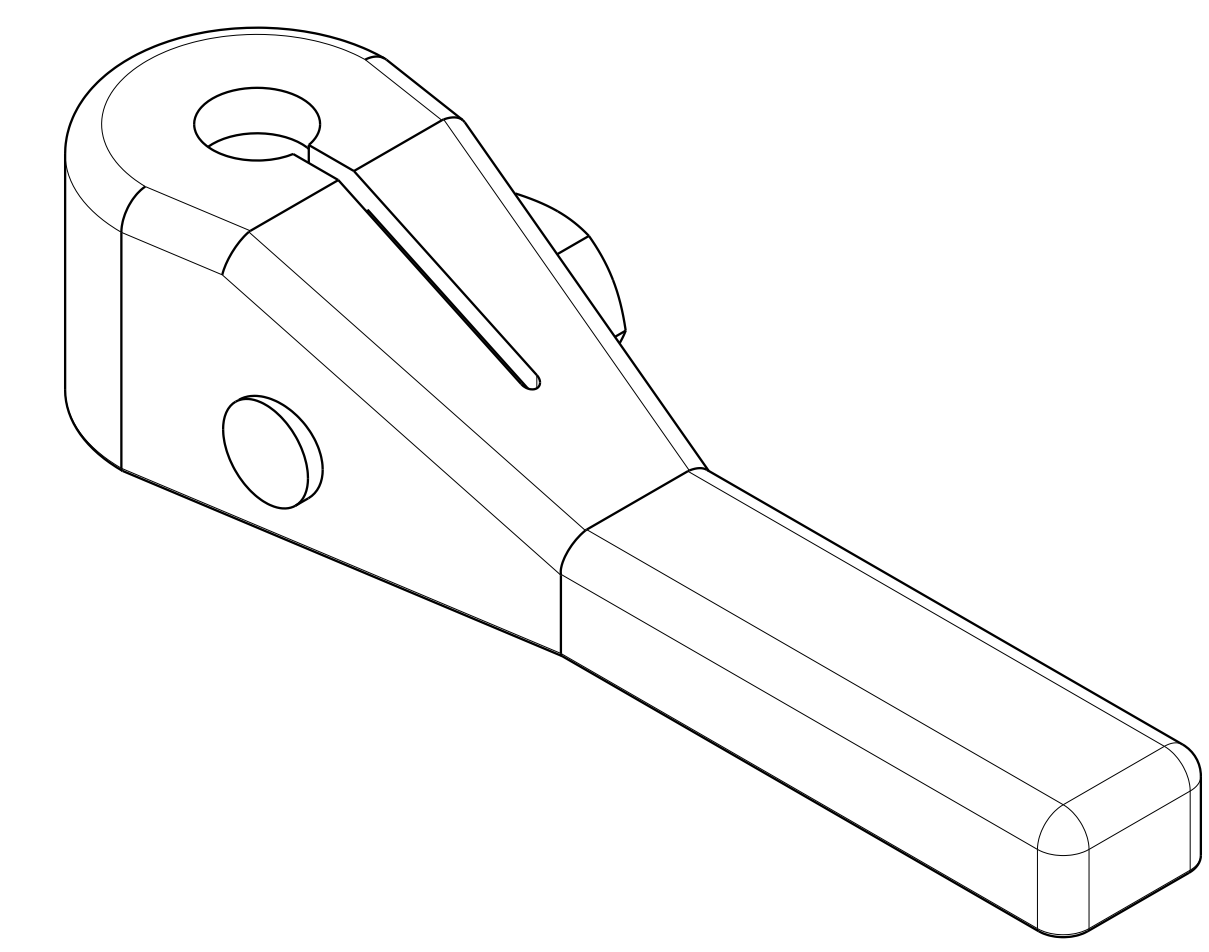
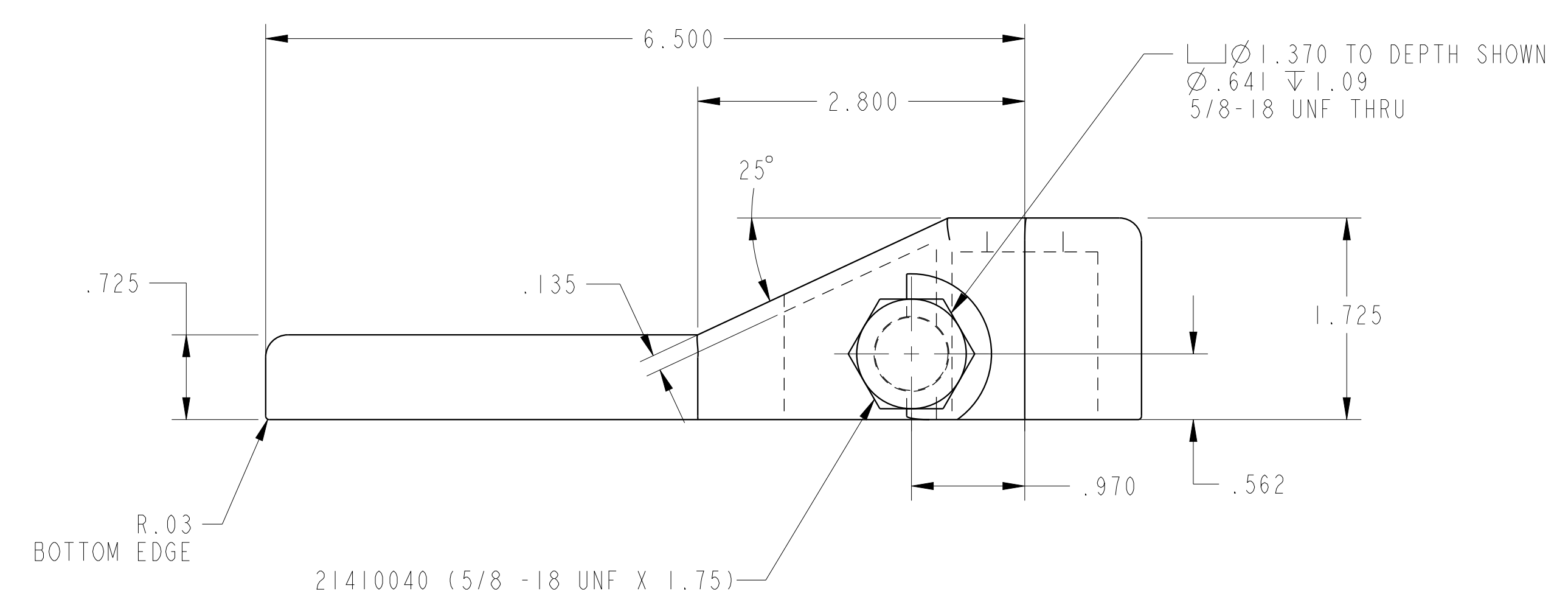
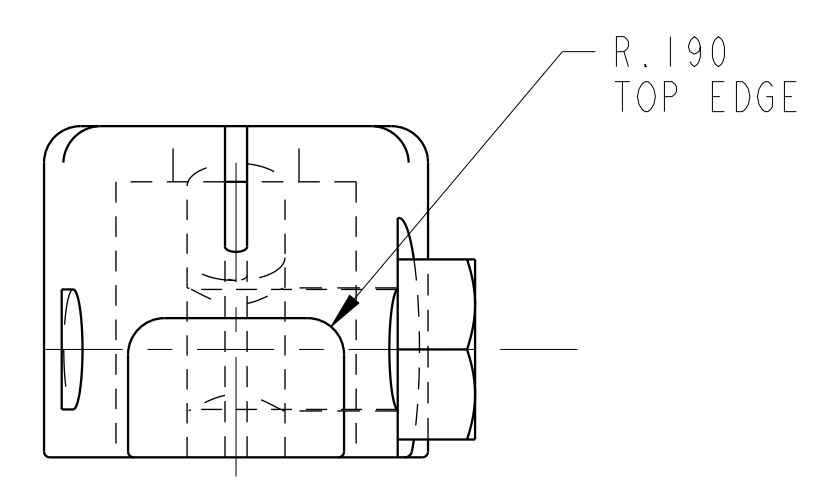
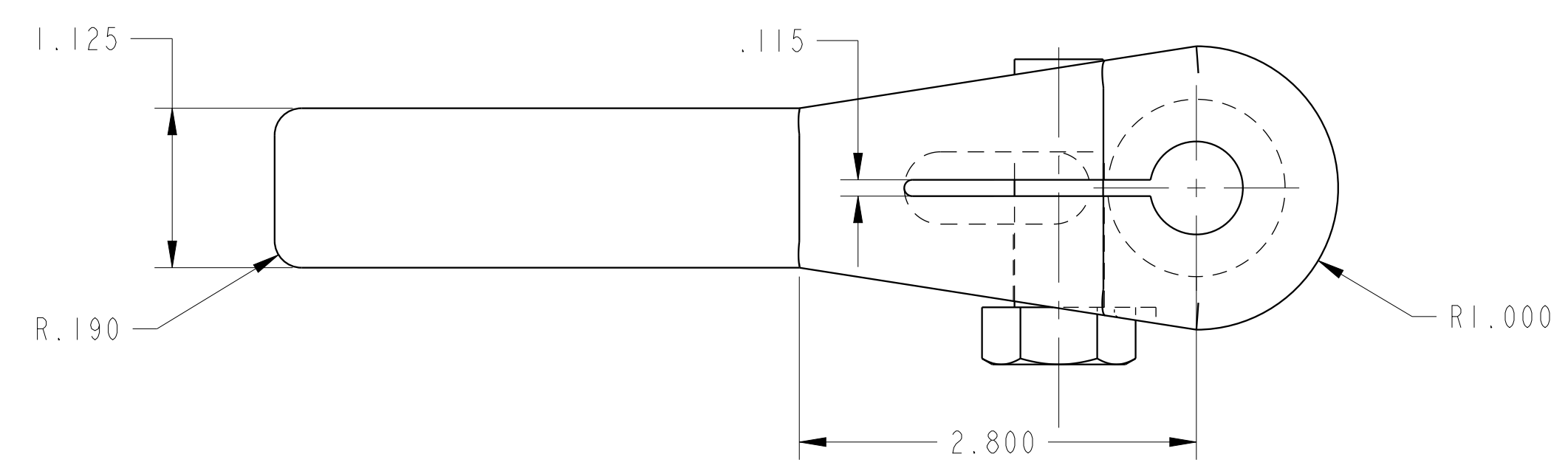
C

B

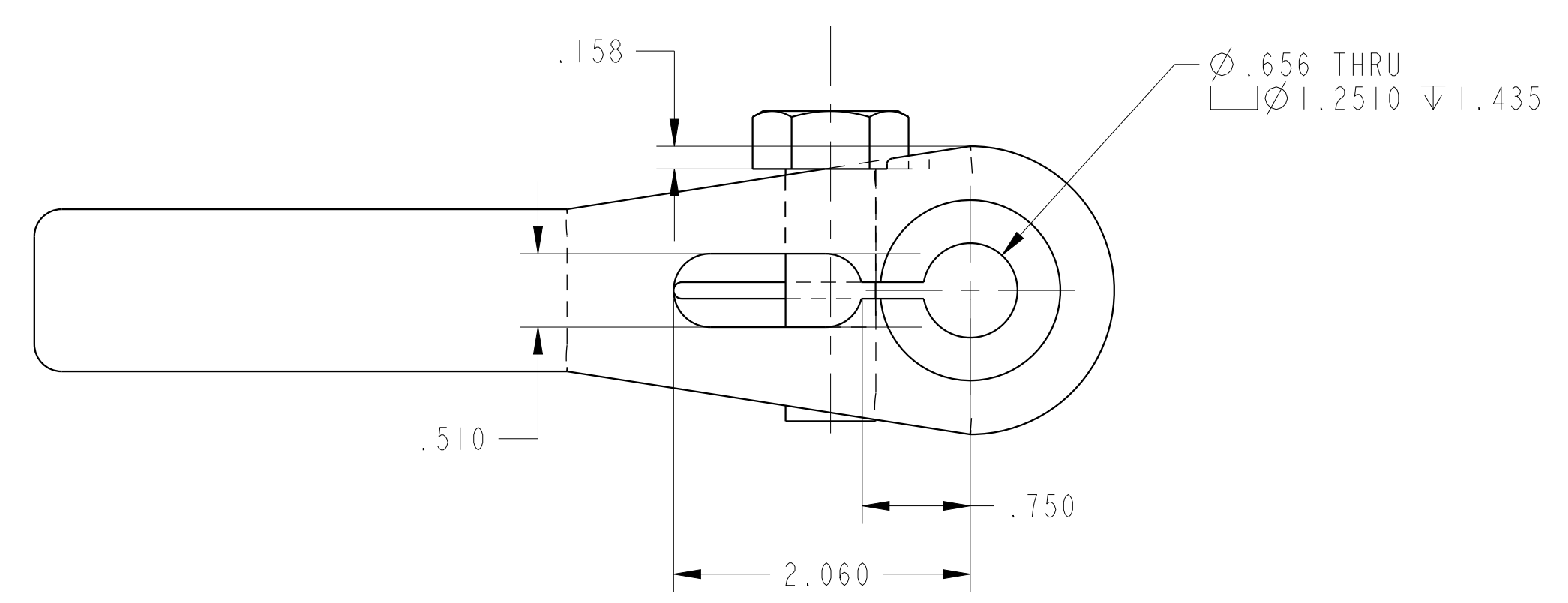
B

A

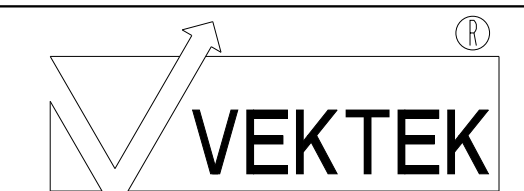
A



ILC91521802 REV B ECN 4064



CAD CONTROL
DRAWING



VEKTEK, INC.
1334 E. SIXTH AVE. P.O. BOX 625
EMPORIA, KS. 66801 U.S.A.

| | | | | |
|---------|--|----------------|------------|--------|
| B | 4064 | RELEASE | NPETERS | 2/3/20 |
| REV | IN ACCORDANCE WITH ECN | EFFECTIVE DATE | REVISED BY | DATE |
| DRW BY: | DRAWING STATUS: Released | | | |
| DATE: | PRODUCTION APPROVED FOR RELEASED STATUS ONLY | | | |

| | | |
|---|---------|--------------------|
| 91521802 | L | ARM, SC, EXT, 5000 |
| REFERENCE MODEL | REF REV | ***** |
| TOLERANCES DO NOT APPLY DIMENSIONS ARE NOMINAL | | SIZE D |
| | | ILC91521802 REV B |

1

2

3

4

SHEET 1 OF 1