

1

2

3

4

D

D

C

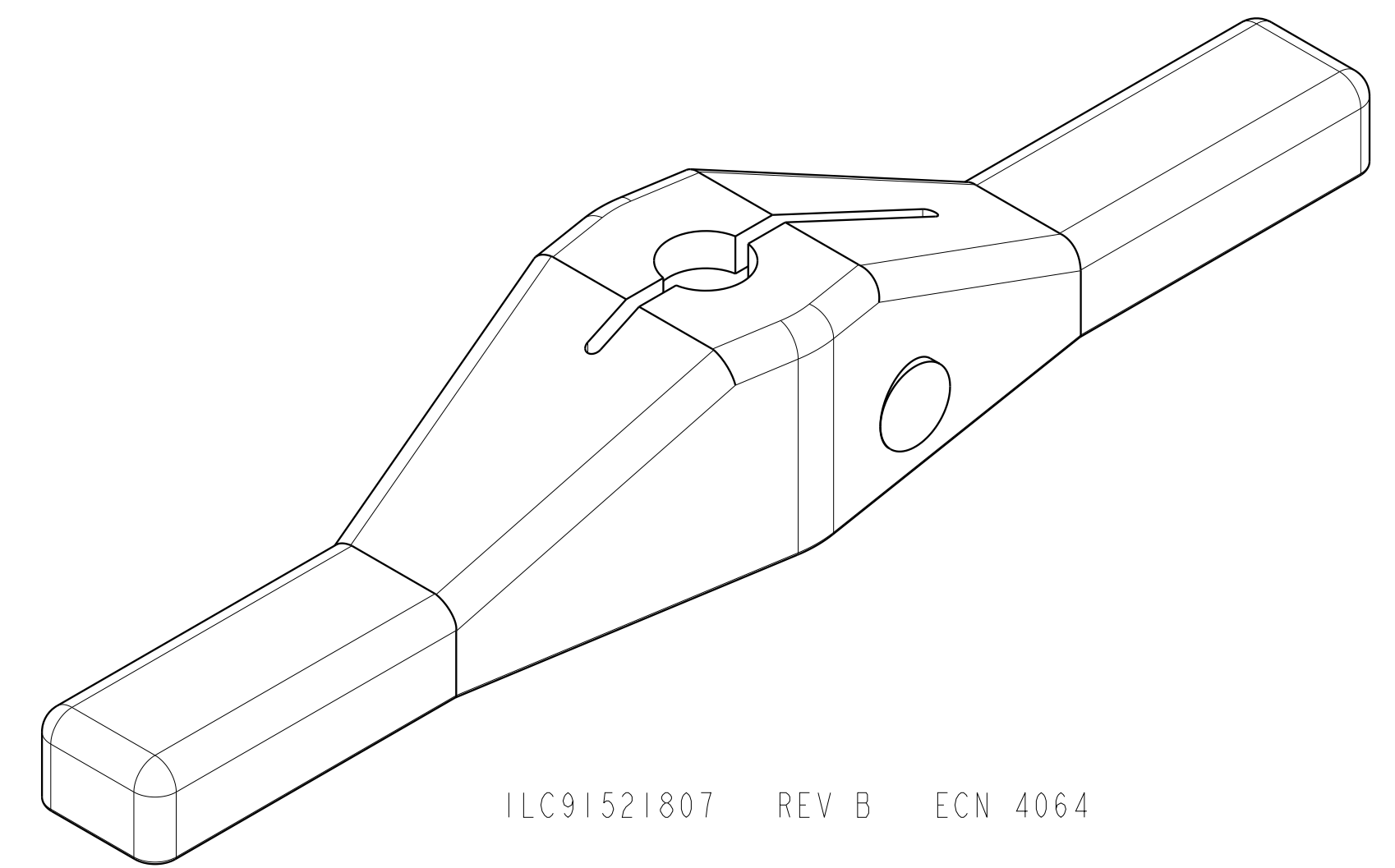
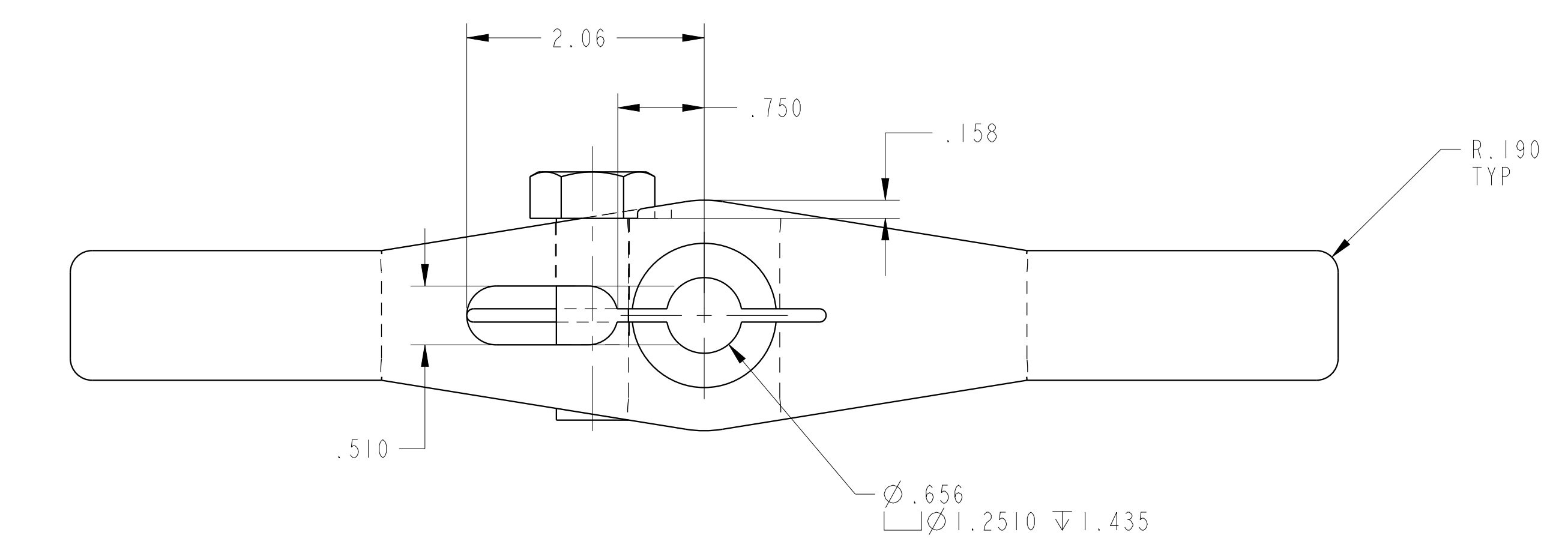
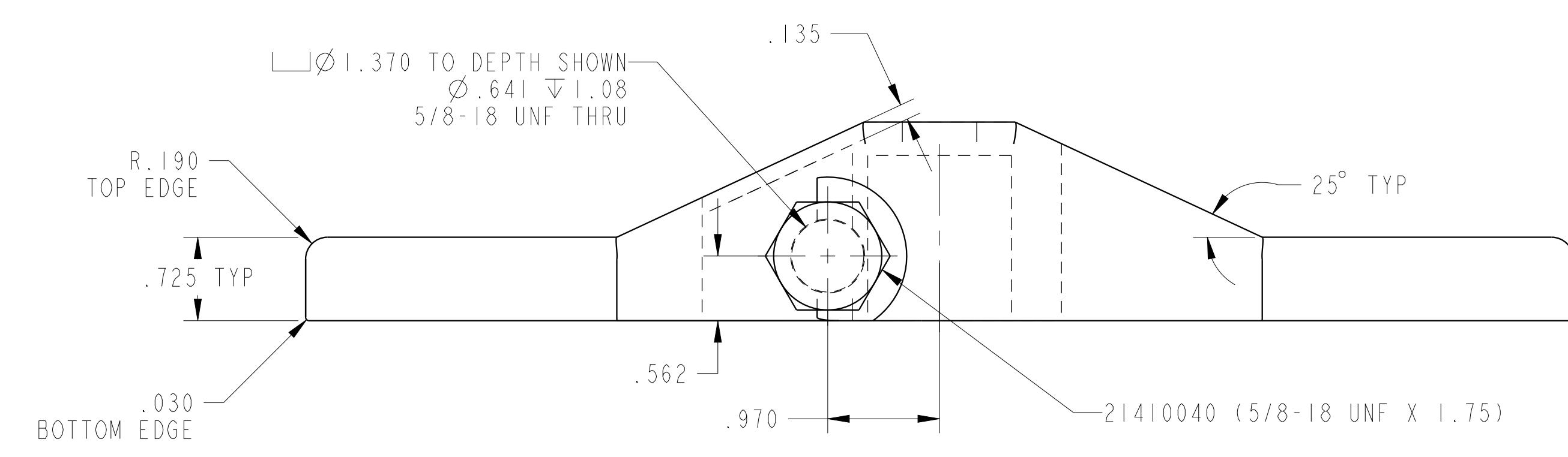
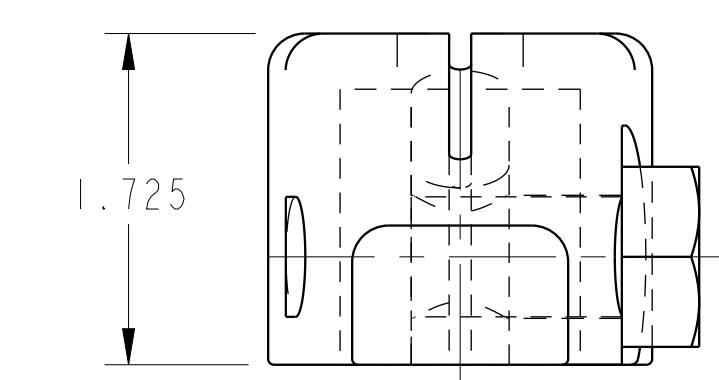
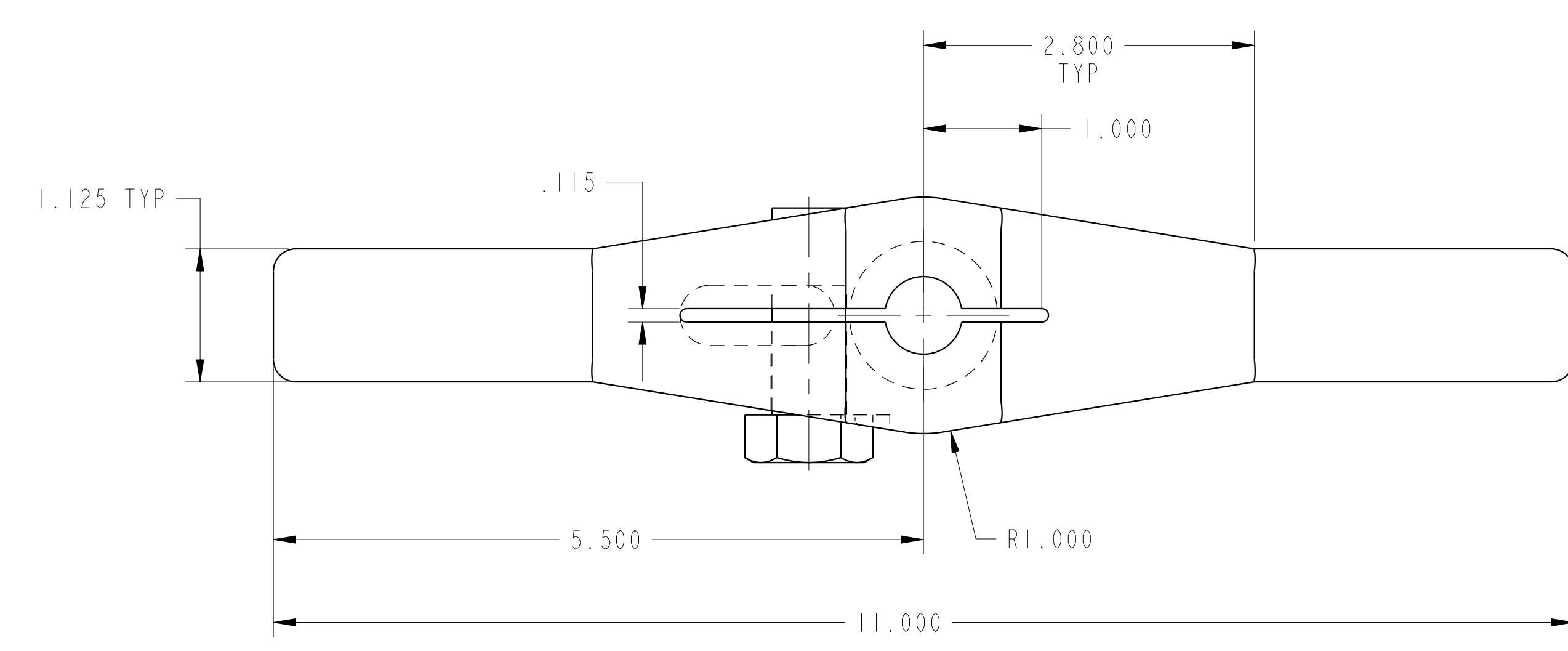
C

B

B

A

A



1LC91521807 REV B ECN 4064

CAD CONTROL DRAWING



VEKTEK, INC.
1334 E. SIXTH AVE. P.O. BOX 625
EMPORIA, KS. 66801 U.S.A.

B	4064	RELEASE	NPETERS	2/4/20	91521807	L	ARM, SC, DBL, 5000
REV	IN ACCORDANCE WITH ECN	EFFECTIVE DATE	REVISED BY	DATE	REFERENCE MODEL	REF REV	***
DRW BY:	K. ROEMER	DRAWING STATUS: Released			TOLERANCES DO NOT APPLY DIMENSIONS ARE NOMINAL		SIZE D
DATE:	07-29-02	PRODUCTION APPROVED FOR RELEASED STATUS ONLY			1LC91521807	REV B	

1

2

3

4

SHEET 1 OF 1